



## Part 12 - Old horses and ponies.

Many people will shy away from buying an old horse or pony because they are a bit more work to keep. The reward that an old pony can give a "new horse family" far outweighs the extra work involved. I love old ponies, they are my passion. I save as many as I can from the doggers, nurse them back to good health and find them a loving family. It will surprise you how spritely they will become when well again.

**Too Old** – If the back teeth are loose or missing, if the joints are large and stiff then it's too hard for them to move around the paddock and riding is painful, or ongoing health problems arise such as colic. In these cases it may be kinder to put them down.

**Old pony problems** – Teeth, feet and diet are the main factors in keeping oldies well. Cushing's disease is common; this shows as a long shaggy coat all year. It's caused by a breakdown of the putridity gland and affects the organs; but a healthy diet is all that is needed to keep them well. Clipping in summer will keep them cool. Arthritis affects may oldies, there are drugs available from your vet or apple cider vinegar (about a cup daily) and a rug in the winter will help.

**Feed** - If you find a sweet old pony it may be thin and it needs worming, teeth checked, feet done and possibly lice treatment. It's hard to get weight on them in winter and a rug will help. A high protein feed a couple of times a day starting with small amounts; about two big double handfuls and building up to about a kilo of protein food with bulk food of Lucerne chaff or leafy hay with each feed. Protein feeds are; barley, lupins, copra, pre mixes like Weightlifter, Vitality, Gumnuts etc. Good pasture is always an asset. Grain (barley, lupins) needs to be soaked in hot water for several hours before feeding. My feed mix is barley and lupins soaked in hot water and molasses and at mealtime I add copra and bran. This mix does not "fizz" up the horses and keeps weight on them. A mineral block is essential with old horses.

**Hoof Care** - Good food will improve hoof condition after a while but oiling hooves daily will help in the mean time. It will take 12 months to grow a full hoof on any horse so a poor one will be slower. Shoes are not needed unless the hoof is badly cracked. Regular trims about every 12 weeks are recommended.

**Worming** - Worm for all worm types first up and keep new pony away from other horses for a few days. Check manure to see if any worms are

passed. Take note of type of worm and amount in each dropping. Worm the pony again in two weeks and check manure again; this clears the whole cycle of worms. Worming needs doing each change of season (4 times a year) - use a bot wormer at less twice a year. (Spring, winter) Note that this program is for older horses and young, pregnant and working horses would be different.

**Teeth** - Teeth need checking first up and then checked once a year. Leafy hay and soft feeds are easier for older horses to eat and digest.

**Grooming** – This helps muscle tone, coat condition and is a great way to bond with your pony. I like to teach children that grooming is an enjoyable chore of having a pony. A back protector under the saddle may be needed if the horse is underweight to stop any back problems.

Old horses and ponies have been there, done that, and are normally very quite, calm and gentle; a safe way for a small child or beginner rider to learn. It is also a really satisfying project to nurse a frail old horse back to a health.

**Question:** I'm often asked where can you buy a cheap horse? A cheap horse usually has problems or is unsound or thin. Camden has two horse sales a month on a Wednesday 1<sup>st</sup> and 3<sup>rd</sup> weeks. Prices are less than private sellers but no history or trials are available. Always take someone with some knowledge of horses as you may buy a real dud and end up out of pocket.

Until next month, Happy Horse – ing Around, Sandy.

## Windellama Website Stats

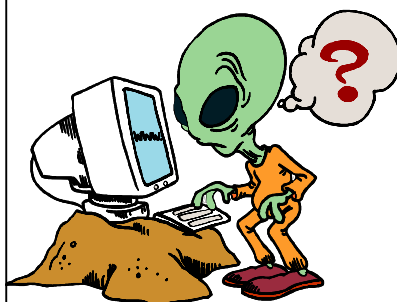
July has been the biggest so far in numbers of hits.

There has been approximately 1,000 new visitors this month to the website.

On average we are seeing a 10% increase in visitors each month.

This averages out to approx. 35 visitors each day.

Approximately 220 have been reading their coloured version of *Windellama News* on-line last month.



If you would like a fast broadband connection then see the article on page 35

# Highland Stockfeeds

223 Brisbane Grove Road

- Variety of small bales of hay
- Stockfeeds
- Mineral Blocks
- Dog & Cat Food

0428 223 677



# Nirvalley Homestead Nursery

629 Cullulla Road, Tarago • 4849 4481

We are a cool climate specialist nursery, locally owned and run. All stock is grown locally and acclimatised to local conditions



- Native and exotic shrubs
- Windbreak and hedging plants
- Advanced trees
- Farm trees
- Tube stock
- Special orders

Peter & Caroline Campbell  
Gift Vouchers available

Open Friday, Saturday, Sunday or call in when the sign is out. Mob: 0422 112 779 AH: 4849 4481

## BOB RUDD FUNERALS

73 Reynolds Street Goulburn NSW 2580

Phone 4822 4400



Your Local Family Owned  
Funeral Directors  
Bob & David Rudd  
and daughter Shane

WE WORK HARD TO GAIN YOUR  
CONFIDENCE & TRUST.

Introducing our New Chapel with on sight parking  
Pre-paid funerals available as well as pre-arranged funerals.

*Just ring and we will come to you*

Servicing Windellama, Goulburn, Mulwaree Shire, Marulan,  
Gundaroo, Braidwood, Gunning, Dalton, Tallong, Bungonia, Taralga, Yass, Braidwood

**Monumental work - Just ring us for a quote**

We welcome your enquiries.

**\*\* SUREPLAN as little as a \$1 a week Funeral Fund\*\***

We welcome your enquiries.

Contact our office 4822 4400

## SHEPHERD'S HILL NURSERY

321 George St, Marulan

Ph 4841 1404

Fax: 4841 1454 Mobile: 0413 047 105

*Look for the house on the hill*

For all your garden needs &  
acclimatised plants

Potted colour, Seedlings, Bulbs, Fruit trees,  
Ornamental trees, Windbreakers,  
Shrubs and more  
Potting Mixes & quality soils & mulches.  
Pots, Statues & Gifts

Gift vouchers & Eftpos available

We are members of NGINA

Nursery & Garden Industry NSW & ACT



## In Your Garden

From Irene Turner



Get your garden ready for spring planting – dig plenty of compost and old animal manure, and a handful of lime per metre.

### Vegetables

Seeds: carrots, parsnips, silverbeet, onions and peas. Asparagus and rhubarb heads can go in now.

Plants: cabbages, lettuces, onions- brown, white and red.

### Flowers

Seeds: petunias, phlox. Seedlings Pansy, viola, stocks, snapdragons, aquilegia, carnations, dianthus, primula, dwarf sweet Williams, alyssum, poppies, larkspur.

Prune your roses now and spray with copper sulphate. Spray apple, pear, plum, quince with winter oil, this controls mite and scale. Spray peaches and nectarines with lime sulphur or Bordeaux to control leaf curl.

### WINTER OIL

2 cups vegetable oil, 2 cups pure soap, mix together. 1 Tablespoon of this mixture with 1 litre of water

### FOLIAGE FOOD (very good for sandy soil)

To a 9L bucket water add 1 tablespoon Epsom salts (magnesium Sulphate) and 2 tablespoons of seaweed concentrate. It is important to mix the seaweed concentrate in well. Spray the mixture over and under leaves, preferably in early morning or evening, during the growing season. The tonic is good for citrus trees, gardenia, kale, broccoli, beetroot, bush beans, silverbeet, cauliflower and English spinach.



### PLANT OF THE MONTH

HAKEA Proteaceae

Hakeas can be grown from either seed or ripened cuttings. They like acid soil, plenty of sun and sharp drainage. They are ideal to grow close to the coast. The entire group was named for Baron von

Hake, an eighteenth century professor of Botany. There are hundreds of species in the genus. Hakeas are happy down to -7c and even produces its flower display in cold weather. Shrub to small trees.

Hakea laurina (pin cushion tree) grows to a height of 7m. It is prized for its perfume and eye catching flowers which appear in early winter to spring.



Hakea Laurina

### HERB OF THE MONTH

HONEYSUCKLE: *Lonicera Capri folium*.

The honeysuckle is a perennial twining climber which given suitable support can reach a height of 6m. The more common species can be found growing wild. Honeysuckle have light green oval leaves and pink-tinged, creamy white flowers, in pairs from midsummer to early autumn. Poisonous small orange berries appear after the flowers. Cultivation: Take cuttings from non-flowering shoots in summer and root in cutting compost. Plant out during Autumn or winter, preferably in light shade.

Uses: In leaf for most of the year, it can be used to cover an unsightly wall and provide rich summer-evening fragrance in an arbour. Perfume can be obtained from the flowers. Flowers can be added to pot purri. They are also useful as an infusion or syrup for treating coughs, catarrh and asthma. The plant has diuretic and laxative properties and also contains salicylic acid, from which aspirin is produced.

Large doses can cause vomiting.



# JKM Excavations

- House sites • Tank sites • Dam desilting
- Road works • Bulk Earthworks • Trenching

**Competitive Rates**

0429 636 743 or A/H (02) 6238 0113

# C OVAN REEK ONSTRUCTIONS

## J & J ARBALIS

LICENCE No. 64844C

ABN 43419374203

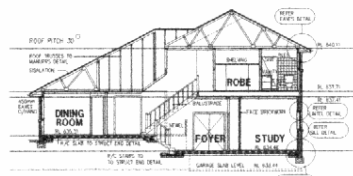
**CONCRETE STENCILLING  
BUILDING CONSTRUCTION  
CONCRETE & MINI-MIX SUPPLIER  
20,000 Gall. CONCRETE WATER TANKS**

PHONE / FAX **4849 4448**  
or Mobile **0409 330 914**  
or **0428 164 572**

## ACOM DESIGN

PO Box 806,  
Goulburn 2580

Yarralla,  
Oallen Ford Rd  
Bungonia 2580



SECTIONAL ELEV A-A  
SCALE 1:50

**Robert C Everingham**

*Building Designer & Draftsman*

**New Homes, Alterations & Additions**  
Duplex, Villa, Townhouse Developments  
Rural, Commercial, Industrial Buildings  
Free Quotes - Competitive Rates - Prompt Service  
Energy Efficient (SEDA), Eng Dwgs: Mech, Struct, HVAC

**TEL 4844 4321**

**MOBILE 0417 682 022**

**FAX 4844 4323**

**EMAIL [acomdesign@bigpond.com.au](mailto:acomdesign@bigpond.com.au)**



MEMBER  
STANDARDS AUSTRALIA



MEMBER  
BUILDING  
DESIGNERS  
ASSOCIATION  
OF NEW SOUTH WALES INCORP

## D & J RIGOLI



**HANDYMAN SERVICES  
&  
PROPERTY MAINTENANCE**  
ABN 43002820238

INTERIOR LINING  
SMALL RENOVATIONS  
SHED TO HOME CONVERSIONS  
PERGOLAS VERANDAHS  
PAINTING TILING PAVING

**And much more...  
no job too big or small !**

**Will beat any reasonable quote**

**Mobile: 0419 492 799**

**Ph: 48 445393 Fax: 48 445163**

**[www.djrigolihandymanagementservices.com.au](http://www.djrigolihandymanagementservices.com.au)**

## Fast Internet Broadband For Windellama

As far as broadband technology and access goes, our choices here at Windellama & surrounding districts have been , and still are, very limited.

Land line based technology like Cable and ADSL are unavailable and judging by the lack of response in getting an ADSL Service on the local exchange (to enable a small few to gain access to fast internet) ... alas proved futile.

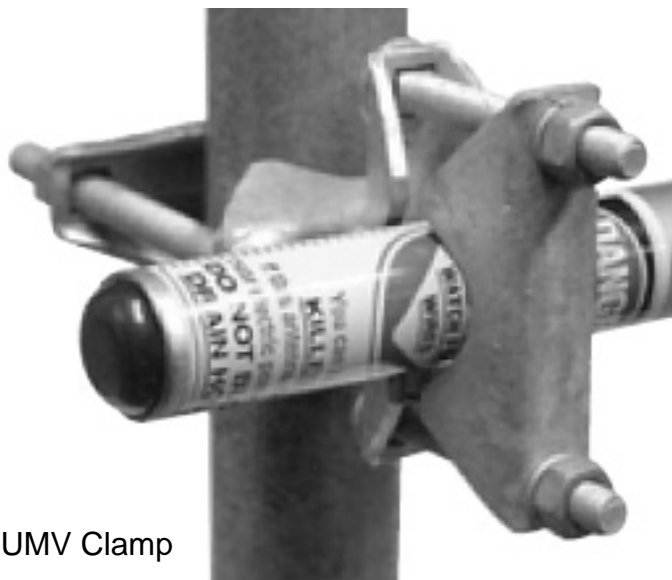
There has always been the option of accessing a fast internet connection via Satellite. However this technology has been heavily subsidised by the Federal Government under the HiBis (Higher Bandwidth Incentive Scheme) which will be ending soon. The other issue with [Satellite](#) is that the pricing for access (Monthly Plans) in the foreseeable future will only increase when the subsidies end and when the other wireless technologies become more commonplace and widespread.

Just recently Telstra released a desktop modem that could be used to connect to their NextG network. FANTASTIC . That is great for most of us, because we don't need a portable device and that way we don't need to have a notebook/ laptop. We can connect the modem through a USB port to our Desktop PC. The other bonus is that the dreaded ( Monthly Plans ) are cheaper than Satellite and even than the other NextG mobile data plans.

The other big deal is that you can plug an external antenna into the modem to boost the signal strength. (and not some little toy aerial... a decent external aerial can be used).

An external aerial attached to the modem for increasing the broadband signal is not dissimilar to receiving a better signal on your TV. The old rabbit ears on top of the tele just don't work as well as a good aerial on the roof.

Even though the Bungonia and Tarago Telstra towers are transmitting a NextG signal, the signal that we reliably receive around our district comes from Braidwood. (Mt Gillamatong to be precise), Bearing this in mind, an external aerial (a directional aerial like a YAGI) that has a very high gain and can be pointed towards Braidwood when attached to the modem should really give a big boost to the signal.



UMV Clamp

The Company that is the supplier of the aerial is a Telstra Dealer. The modem is purchased from Telstra .

If you would like more detailed information on this product / service for our area then just go to the Windellama website and follow the links.

A point to stress is that if you are unsuccessful in gaining a signal with this aerial you are guaranteed to have your money refunded if returned within 10 days.

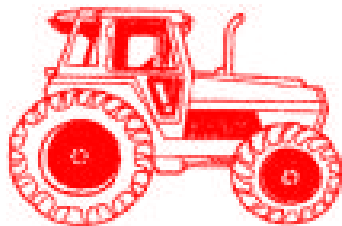
If you wish for the aerial to be installed for you then there is also a link for a local to install for you.

This product / service has already been installed in our area and the owner has been impressed with their increase in speed of operation.



YAGI Aerial with Brace

**A.F. & M.R. DAVEY  
TRACTOR &  
MACHINERY REPAIRS**



*"IF IN DOUBT, GIVE ARTHUR A SHOUT"*

**ARTHUR DAVEY**

**PH: 4822 8441**

**MOB: 0409 651 517**

274 Mountain Ash Road, Goulburn

**AARON'S MINI EXCAVATIONS**

ABN 84197940351



**4 in 1 Bucket  
Postholes  
Trenches  
Levelling**

**Fits through 1 metre opening!!**



**Phone: 02 48411 862**

**Fax: 02 48411 395**

**Mobile: 0418 111 862**



**BOBCAT HIRE**

**863 BOBCAT**

**with attachments**

**Experienced Operator**

**David Lavender**

**Quialigo**

**Phone 4844 7078**

**Mobile 0418 767 067**



**TRAINING AND ASSESSMENT SERVICES**

Forklift, Excavator, Cherry Picker,  
Skid Steer, Cranes  
Confined Space Entry,  
Working at Heights & More



**HIRE**

15m Trailer Mount Cherry Picker  
Excavator Dingo Skid Steer  
Confined Space Entry Equipment

**OTHER SERVICES OFFERED**

Solar Driveway Alarm System Supplied & Installed  
Personal Protection Equipment Suppliers  
Concrete Sawing & Drilling Contractors  
Fire extinguishers supplied or re-charged  
PO Box 1372, Goulburn NSW 2580



Ph **4844 7057** Fax 4844 7058

email [triplec@goulburn.net.au](mailto:triplec@goulburn.net.au)

[www.triplec.net.au](http://www.triplec.net.au)

# CHURCH NEWS

## Catholic Church Services

Parish Priest: Fr. Tony Percy  
Assistants: Fr. Damien Styles &  
Fr. Francis Kolencherry

Contact 4821 1022

\*\*\*\*\*

There are no regular Masses in **Marulan**

\*\*\*\*\*

Mass times in **Goulburn** are:

Saturday vigil Mass 5pm. at  
St. Peter & Paul's Old Cathedral  
Note the earlier time during winter

Sunday 8am. at Fatima, North Goulburn

Sunday 10 am. at Sts. Peter & Paul's.

### **St. Joseph's Church, Tarago**

12th August 10.30am Mass

26th August 10.30am Holy Communion

Enq: 4842 2444



St. Bartholomew's Anglican Church

## Anglican Church Services

### **August**

*St. Mark's - Bronte*

Sunday 12th 11.30am

*St. Bartholomew's - Windellama*

Sunday 26th 11.30am Patronal Festival

Followed by a light luncheon at Windellama Hall

Cost \$5.00 per head

### **September**

*St. Mark's - Bronte*

Sunday 9th 11.30am

*St. Bartholomew's - Windellama*

Sunday 23rd 11.30am

### Notice

A reminder of the annual "Apron Parade" at West Goulburn Parish Wednesday 22nd August.

\*\*\*\*\*

**Our Rector Robert Lindbeck may be contacted on 4821 3631**

Although both our Churches are nominally Anglican, worshippers of all denominations are welcome at all services.

### **Our Advertisers**

Please consider our Advertisers when you require goods and/or services that they offer to you.

Our advertisers provide the means for the Windellama News to be published each month.

**When you use them let them know you saw it in the Windellama News.**

"The Lord is My Shepherd"

### **Goulburn Bible Baptist Church**

Cnr. Mary & Hume Streets  
Pastor Dennis Smith

Enquiries: 4821 9822

Sunday Worship Service: 10.30am

Sunday School: 10.30am

Prayer / Bible Meetings:

Wednesday Night 7.00pm

Sunday Afternoon 4.30pm

Youth Group:

Friday 5.30pm

Not on in school holidays

Radio Ministry:

2GCR 103.3 FM

Tuesday 6.00 – 9.00pm

*Got something to tell us about ?*

You can get your information into the Windellama News by either writing and depositing into the letter box at the Hall, or by emailing it to

**windnews@goulburn.net.au**

or by ringing Denise on 4844 5087 or Cathy on 4844 5554 and talking to them.

Community and general interest material is always appreciated.

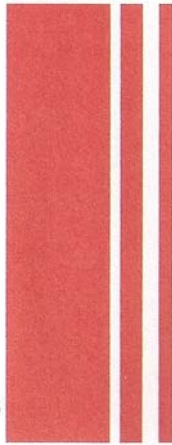
# Just LAW

## Tarago Office

4 Wallace Street, Tarago NSW 2580  
Ph: 0409391211 Fax: +61(2)83234231

Office hours 9am - 3pm Tuesdays & Fridays  
*Please phone for an out of hours appointment*  
Suzanne McDonald, Solicitor

BUNGENDORE OFFICE ERINDALE OFFICE  
36A Ellendon St NSW 2621 Erindale Chambers ACT 2903  
Ph: (02)62380192 Ph: (02) 62314700



# JOHNSON & SENDALL

INCORPORATING MULLENS

SOLICITORS - CONVEYANCERS

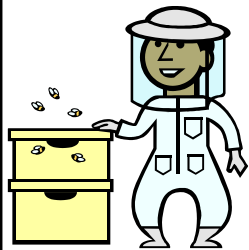
13 MONTAGUE ST GOULBURN 2580

PH (02) 4821 1588

FAX (02) 4821 9850

## CYPRESS HILLS APIARY PRODUCTS

Bee Swarms Collected  
Honey & Beeswax Products for sale



## BOB SHAW

3225 Oallen Ford Road,  
Windellama

Phone: 4844 5001



## Southern Districts Piano Service

Pianos • Pianolas • Tuning • Repairs  
Re-polishing • Removals

*Graham Price*

02 4844 5329

## COUNSELLING

(Especially Post Natal Depression & Trauma)

Reiki

Australian Bush Flower Essences

Products available:

Combination Essences      Herbon

Phone Anna 4849 4304

*Need a Plumber Call. . .*

## GRAHAM MOON

Lic. No. 194029C



Plumber - Drainer - Gas Fitter

Roof Plumber - L.P. Gas

DOMESTIC & COMMERCIAL - 7 DAYS

Phone 0428 223 677

## LOCAL ELECTRICAL CONTRACTOR

Lic. No. 174303C

24 Hour prompt service - Free Quotes

## RON WENBAN

Mob: 0428 445259

Ph: 4844 5259 Fax: 4844 5617

\*Rural \*Domestic \*Industrial \*Commercial

\*Test & Tag tools & appliances

## GOULBURN & DISTRICTS

### RURAL SERVICES

Weed Spraying - Spot & boom

Four wheeler for small/steep areas

Licensed & fully insured

Local family business

Reliable

Good rates

David Bradley

4844 4219 or 0428 417 902

# Community Contacts

## Windellama Progress Association

Cathy Meehan (President) 4844 5554  
 Frances Knights (Secretary) 4844 5157

## Windellama Rural Fire Brigade

Lynton Roberts (Captain) 4844 5118  
 Bev McGaw (Communications) 4844 5147  
 Sue Roberts (Treasurer) 4844 5118

## Windellama Field Day Committee

Judy Alcock (Exec Officer) 4844 5188

## Windellama News

Denise Johnson (Editor) 4844 5087  
 Cathy Meehan (Sec / Treas) 4844 5554

## Windellama Garden Cub Inc.

Lynn Stockford (Sec / Treas) 4844 5029  
 Colleen Ellis 4844 5207

## Windellama Hall Country Markets

George & Annemarie Webb 4844 5038

## Windellama Historical Society

Sandra Greville (Secretary) 4844 5047  
 Joanna Croker 4844 5125

## Windellama Landcare

Mick Ryan (President) 4844 5012  
 Shirley Cornish (Secretary) 4844 5101

## Windellama School P&C

Kelly George (President) 4844 5563  
 Heather Caulfield (Secretary) 4844 5120

## Nerriga Landcare

Di Roberts (President) 4844 5344  
 Helen Rolland (Secretary) 9555 8676

## Nerriga Rural Fire Brigade

John Rolfe (Captain) 4845 9160  
 Justin Parr (Snr. Deputy Captain) 4845 9129  
 Marie Kennedy 4845 9126

## Jacqua Creek Landcare

Sue Armstrong (Secretary) 4844 4364  
 Ken Moran (Chair) 4844 4234

## Wires (wildlife rescue)

Marian Pearce 4844 5244  
 Southern Tablelands WIRES 4822 3888

## Community Health Goulburn

4827 3913

## Community Transport

4823 4499

## Justice of the Peace

Linda Shannon 0429 980 141  
 "Stirlingbrae" 3186 Windellama Road, Windellama.

**FOR ALL FIRE  
 OR EMERGENCIES  
 PHONE 000**



## Important Phone Numbers

### **Rural Fire Brigades**

Windellama	Lynton Roberts	4844 5118
Tarago	Des Kingston	4849 4503
Taylor's Creek	D Elward	4849 4240
Mt Fairy	Greg Brooke	0429 425 840
Bungonia	Ian Tapper	4844 4460
Gundry	Dennis Borlan	4821 6821
Nerriga	John Rolfe	4845 9160

**PHONE 4844 5359 or  
 CHANNEL 21/209 Base**



### **Windellama SES First Aid**

Graeme McFarlane	4844 5506
Kevin Muffet	4844 7143

### **Police**

Tarago Station - Constable Gerard Hespe	4849 4411
--	-----------

### **Goulburn Base Hospital**

4827 3111

### **Ambulance**

**000**



**For Mobile users  
 in case of emergencies dial**

**112**

**And it will be treated as a 000 call**



# August 2007

MON	TUE	WED	THU	FRI	SAT	SUN
		1 School Afternoon Show	2	3 Historical Society meeting  Jeans for Genes Day	4 Garden Club Cancer Appeal  Games Night	5
6 Bungonia Quilters  Bank Holiday	7 Willow Glen Gardeners  Landcare Conference & Awards	8	9	10 Kindergarten orientation	11	12 St. Mark's - Bronte
13 Bungonia Quilters	14	15	16	17	18 Vietnam Vets Day	19 HALL COUNTRY MARKETS
20 Bungonia Quilters  Progress Meeting	21	22	23	24	25 Fire Brigade meeting	26 St. Bart's - Windellama
27 Bungonia Quilters	28 Lunar Eclipse  17 weeks to xmas	29 School Afternoon Show	30	31		

**For details of times and places - see articles inside this issue  
Emergency phone numbers are on the back of this page.**