

Landcare Update



Gratitude instead of complaints: Positive energy flows between two people when there is an “attitude of gratitude.” Constant complaints create a heavy, negative energy, which is not fun to be around. Practise being grateful for what you have rather than focusing on what you don’t have. Complaints create stress, while gratitude creates inner peace. Gratitude creates not only intimate, emotional relationship health, but physical health as well.

Fun: We all know that “work without play makes Jack a dull boy.” And so too does work without play make for dull relationships. Relationships thrive when people laugh together, play together, and when humour is a part of everyday life. Intimacy flourishes when there is lightness of being, not when everything is heavy.

Service: A wonderful way of creating intimacy is to do service projects together. Giving to others fills the soul and makes the heart sing. Serving moves you out of yourself and your own problems and supports a broader, more spiritual view of life. If you and your partner agree to these 7 choices, you will be amazed at the improvement in your relationship!

Adapted: “Aust. Institute of Professional Counsellors”

Prepared by: www.virtualrealitycounselling.com

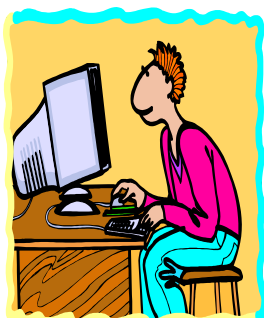
Website Stats

We are still consistently being visited by 1500 unique (new) visitors each month along with our many regular visitors.

The web version is in colour and is always to hand at the push of a button.

The Windellama website has hits on average of between 5,000 to 8,000 per month. The traffic is brisk with no pollution to our area.

The Brigade site also is being mega-visited, especially for the local weather stats.



SOILS AND SALT EXPO

This Expo is part of the **Windellama Locals Linking Landscapes** program of the Southern Rivers Catchment Management Authority.

The Expo, to be held on a Saturday in September, will provide an opportunity to learn about soil and salt by talking to soil experts with considerable local knowledge. The experts including Andrew Wooldridge and members of his technical team will be available to explain how groundwater and geology combine where salt problems will occur.

This Expo is targeted at all landholders in the Windellama community – you are urged to attend. There is no charge and David Hilhorst at the Southern Rivers CMA has arranged for five or so experts to speak to us. Please ring David (4842 2594) to indicate your interest in, and for further details on, the workshop.

An “expo style” workshop will give you the opportunity for one-on-one discussions with the experts and with staff from Southern Rivers Catchment Management Authority. The best soil health and salinity speakers will be available to answer your questions about reading your landscape, soil health issues, and recognising and addressing salinity.

This will be followed by a demonstration of land assessment techniques - how to read your landscape and how to fix what you find.

The workshop will run from 9:30 – 3:00: the morning will be spent at Windellama Hall with the speakers and after lunch there will be a visit to a site close to Windellama.

NEW MEMBERS

New members are more than welcome – just turn up to our next working bee. Membership is \$5.00 for a family.

Sandra Greville, Secretary

SHEPHERD'S HILL NURSERY

321 George St, Marulan
Ph 4841 1404

Fax: 4841 1454 Mobile: 0413 047 105

Look for the house on the hill

For all your garden needs &
acclimatised plants

Potted colour, Seedlings, Bulbs, Fruit trees,
Ornamental trees, Windbreakers,
Shrubs and more
Potting Mixes & quality soils & mulches.
Pots, Statues & Gifts

Gift vouchers & Eftpos available

We are members of NGI NA
Nursery & Garden Industry NSW & ACT



M & M

Concreting & Excavations

Lic. No. 25450

- * SLABS * DRIVEWAYS * PATHS *
- * RETAINING WALLS *
- * TIPPER / BOBCAT HIRER *
- * POST HOLES *
- * RUBBISH REMOVAL *

MANUEL BARBA

Mobile: 0402 176 435

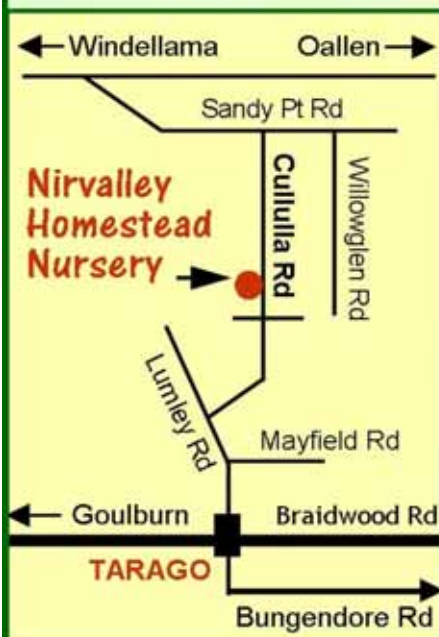
Ph/Fax: 4829 5255

Nirvalley Homestead Nursery

629 Cullulla Road, Tarago Ph: 4849 4481 M: 0422 112 779

www.nirvalleyhomesteadnursery.com.au

We stock plants and trees to suit our climate - frost, drought and wind tolerant, grown locally and acclimatised.



- Native and exotic shrubs • Tube Stock
- Windbreak and hedge plants • Fruit Trees
- Big range of ornamental and advanced trees
- Contract growing • Special orders
- Irrigation installations and repairs
- Garden design and horticulture



OPEN:
Saturday & Sunday 8am-5pm
Frid & Mon 10am-3pm
or call for other times
Email: nirvalley@optusnet.com.au



Come out and see us... it's worth the drive



In Your August Garden

From Irene Turner

Get your gardens ready for Spring planting. Dig in plenty of compost and old animal manure, blood & bone, and lime if your vegetables require it.

Weed & tidy up your garden.

Vegetables to sow:-

Seeds of carrots, parsnips, lettuce, silver beet, onions & peas.

Asparagus & rhubarb crowns can go in now.

Seedlings of cabbages, Chinese cabbages, lettuce, silver beet & onions.

Flowers to sow:-

Seeds of pansy, viola, stocks, snapdragons, aquilegia, carnation, dianthus, primula, dwarf sweet William, alyssum, poppies & larkspur.

Prune your roses and fruit trees now. Spray your roses with Lime Sulphur. Fruit trees can be sprayed with Winter Oil; this controls mite & scale.

Peaches and nectarines - spray with Lime Sulphur or Bordeaux to control Leaf Curl no later than pinking of the buds. Spray ornamental peaches as well.

If you had a fungus problem, spray the trees with a systemic fungicide such as Benlate, or try sodium bicarbonate spray.

White Oil

Mix 1 part of dishwashing liquid to 4 parts of Sunflower Oil. When ready to spray, add 1 tablespoon of the concentrate to 1 litre of water.

Sodium Bicarbonate Spray

Good for rose rust & black spot. Add 1 teaspoon of bicarb soda to 1/2 teaspoon of sunflower oil and 1 drop of dishwashing detergent into 1 litre of water. Stir well & use immediately.



PLANT OF THE MONTH - PEAS

Sugar Peas - Snow Peas - Climbing Peas.

The origin of peas is Turkey, western Asia & the Mediterranean. Peas prefer cool to mild conditions and thrive when temperatures are



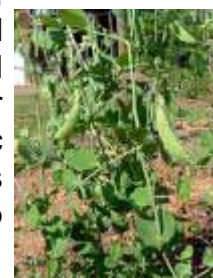
between 15-24°C. Peas are ideal for planting where you have previously grown leafy greens. When you have added chicken manure or poultry manure to the previous crops, generally provide sufficient nutrient and elements for the peas. Add lime if your soil is acidic. Peas like the ph to be 6.5 to 7.5

- Peas need good drainage, add organic matter prior to planting, this helps to guard against root disease. Also provide good air circulation and avoid over-fertilising the plants.
- If powdery and downy mildew occur, then spray with wettable Sulphur or milk sprays. (Make a solution with 10% of full milk and water). Foliar application of liquid seaweed can help.
- Peas are best sown from seeds sown directly into the soil. Space the seeds 5cm apart for dwarf peas and 15cm apart for the larger peas.
- Rows should be 60cm apart for the dwarf peas, and 80cm apart for the larger peas, to allow access for easy picking.
- Tall growing varieties need trellising. Dwarf variety will also benefit from some support.
- Water the seeds in with liquid seaweed, and do not re-water until the plants emerge.
- Flowering begins 4-9 weeks after planting and peak pod harvest occurs 3 weeks later. Peas require consistently moist soil if they are to bear well.

Saving the seeds of the peas:

Allow seeds to develop to maturity and dry naturally on the vine prior to harvesting. Shell the pods once they become brittle, and store the dried seeds in a sealed glass jar. Store in a cool dry place.

You can grow peas in pots, using a good potting mix, add home-made compost and well decomposed animal manure or worm castings. Adding organic matter also ensures the soil is rich in beneficial fungi that help prevent root diseases.



Dallens Mobile Mechanic



Rob Hutchison

Ph: 02 4844 5727
Mob: 0401 078 483

Lic. #46213

- Chainsaw Sharpening & Repairs
- Logbook services
- Breakdown service available
- Motor re-builds
- Clutches
- Brakes
- All mechanical repairs
- Travel to you

SL GOULBURN AUTOMOTIVE SERVICES

9a Victoria Ave, Goulburn
(behind Geissler Motors)

All mechanical repairs
Gas conversions & repairs
All light vehicle rego. Inspections
Blue, pink & green slips
Gas bottle re-stamped
& inspections arranged

4822 3788

Tarago Tilt Tray Service - Ph 0427 481 632

Because we have a legally registered tow truck, means we can tow or carry,registered or not.....

-Cars-Machinery-Sheds-Boats-Trailers-
-Caravans-Building Materials-

- Move transportable water tanks, etc
- Car broken down? We'll pick it up and take it to the servo for repairs.
- Bogged? The truck is equipped with a seven ton winch—lotsa grunt!



Want to tow a large or small unregistered caravan/trailer to or from the coast or even next door and found out permits are not available for this?

We can do it, either tow or carry and it's all legal.

Phone Col 0427 481 632

Sorry not equipped to carry shipping containers or livestock.

Cut out and keep this ad - handy in your car for emergencies

ROADWORKS IN OUR AREA

The corner of Oallen Ford Road & Sandy Point Road has recently been renovated & widened & strengthened. With drainage works & landscaping, it is nearly ready for its final layer of bitumen.

Hopefully this will be a more truck driver friendly and a safer corner as this traffic route is and will be even busier in the future.



Another kilometre extension to Oallen Ford Road at the eastern end towards the Shoalhaven River just past Roberts Road.

This section has had a dangerous curved section straightened with a large amount of treed section removed and widened.

At present the road layers have been constructed and rolled, even with interruptions by our winter rain.

This section once tarred will now result in approx. 5 kilometres of dirt road remaining until the Oallen Ford, connecting it to Road 92 through to Nowra.

All we need now is a new high flood-proof bridge across the Shoalhaven River to complete this important artery for our area.

Marys Xmas Cake - Gluten Free

(Makes 3 cakes of over 1kg in 21cm tins)
Fan forced oven - 140°C; or higher if not fan forced. Long moderate to slow cooking required.

500g plain gluten-free flour mix
Pinch salt
1 tsp ground cinnamon
2 tsp freshly grated nutmeg
1 kg sultanas
600g seeded raisins
500g glace cherries, roughly chopped
250g flaked or shredded almonds
200g dried cranberries and/or blueberries
350ml olive oil
Grated rind of 1 lemon
350g dark brown sugar
8 eggs, beaten
4tbsp brandy, rum or sherry; or 2 tbsp fruit juice of choice

Grease cake tins & line them with a double thickness of greaseproof or brown paper.

Set oven. Sift flour with salt & spices.

Divide into 3 parts. Mix one part with the dried fruits & almonds so all fruit is coated.

Mix sugar & lemon rind into the olive oil in a very large bowl. Alternately add small amounts of beaten egg & flour from the second portion, beating well each time.

When all egg & second portion of flour have been incorporated, add fruit mixture. Now add the remaining flour & liquid. Maybe mix this by hand.

Divide mixture evenly between the prepared tins and smooth top of cakes. Moisten the cake surfaces slightly with fingers dipped in warm water. There should be a thin film of water over each cake, this helps prevent formation of a hard crust.

Bake for approx. 2 ¼ hours, covering cakes with foil for final hour of cooking to prevent burning. You might need to turn down the oven temp[after the first hour of cooking.

Test after 2 hours. If your skewer comes out clean, the cakes are done.

Cool in the tins for an hour, then turn out onto cake racks & leave until cold. Wrap in foil & store in airtight containers.

Sprinkle a couple of times during storage with brandy or sherry.

SIGNS

In a Podiatrist's office: "Time wounds all heels."

On a Septic Tank Truck: Yesterday's Meals on Wheels

At a Proctologist's door: "To expedite your visit, please back in."

At an Optometrist's Office: "If you don't see what you're looking for, you've come to the right place."

On a Plumber's truck: "We repair what your husband fixed."

On another Plumber's truck: "Don't sleep with a drip. Call your plumber."

On a Church's Billboard: "7 days without God makes one weak."

At a Towing company: "We don't charge an arm and a leg. We want tows."

On an Electrician's truck: "Let us remove your shorts."

In a Non-smoking Area: "If we see smoke, we will assume you are on fire and take appropriate action."

On a Taxidermist's window: "We really know our stuff."

On a Fence: "Salesmen welcome! Dog food is expensive!"

At a Car Dealership: "The best way to get back on your feet - miss a car payment."

Outside a Muffler Shop: "No appointment necessary. We hear you coming."

In a Veterinarian's waiting room: "Be back in 5 minutes. Sit! Stay!"

In a Restaurant window: "Don't stand there and be hungry; come on in and get fed up."

In the front yard of a Funeral Home: "Drive carefully. We'll wait."

Sign on the back of another Septic Tank Truck: "Caution - This Truck is full of Political Promises"

Church News

Catholic Church Services

Parish Priest: Fr. Dermot McDermott
Assistant: Fr. Sunhil Kadaparambil

Presbytery & Parish Office
Phone 4821 1022

Sunday Mass will be at 9am. on the 2nd & 4th
Sunday at St. Patrick's **Marulan**.

Mass Times in **Goulburn** are:

Saturday Vigil Mass:

6pm (DST) at St. Peter & St. Paul's
Sunday: 8am. at Our Lady of Fatima,
Nth. Goulburn

Sunday: 10am. at St. Peter & St. Paul's

St. Joseph's Church, Tarago

1st Sunday of each month 10.30am

Enquiries: 4842 2444



GOD'S REMNANT ASSEMBLY AUSTRALIA (GRA Australia)

Would you like to know more about Jesus?

Do you want to know the LIFE He has for you -

your destiny, your gifts, your purpose?

We are a husband and wife team with GRA, a trans-denominational missionary movement. GRA works around the world, including Iraq, Iran, Afghanistan, Nigeria, Sudan and is new to Australia. We believe Australia needs the Word, fresh and new, as it is being shared around the world and setting lives alight with the beauty and Truth of Jesus.

We have started a home Church in our community and introduce ourselves – Bunja and Judith Smith. If these words have stirred or touched you please contact us to hear more about this Ministry that is new to Australia:

by phone - 0401 912 193 or by post -

Pastors Bunja and Judith Smith

Gods Remnant Assembly Australia
GPO Box 1695, Canberra City ACT 2601

Be part of this exciting work in our community:

Sunday morning - we sing and study His profound truths

Tuesday evening – we plan the ministry, outreach and study His Word

Thursday evening – we praise and enjoy a power prayer hour.

Jesus' love never fails. John 15 : 12



St. Bartholomew's Anglican Church

Anglican Church Services

AUGUST

St. Mark's – Bronte

Sunday 8th – 11.30 am

St. Bartholomew's – Windellama

Sunday 22nd – 11.30am

We extend an invitation to all to join us and our special guest, Bishop Stuart Robinson, in the celebration of the 151st anniversary of St. Bartholomew's Church. A finger food luncheon will be held in the grounds of the church following the service.

The Reverend Harley Lockey may be contacted on 4821 7564 or 0422 171 711

SEPTEMBER

St. Mark's – Bronte

Sunday 12th – 11.30am

St. Bartholomew's – Windellama

Sunday 26th - 11.30am

Although both our Churches are nominally Anglican, worshippers of all denominations are welcome at all services.

NERRIGA

ANGLICAN CHURCH SERVICES

Held at Nerriga Church Hall

2nd Sunday each month at 2.30pm.

(Except Easter & Christmas)

All welcome.

* IT PAYS TO ADVERTISE *

The **WINDHELLAMA NEWS** reaches well over 1500 households

Our Advertising Charges

Classifieds (maximum 2 lines)	FREE	
	Month	Year
		(11 issues)
Small advertisement (business card size)	\$ 6.50	\$ 65.00
Quarter page advertisement	\$12.00	\$120.00
Half page advertisement	\$25.00	\$250.00
Full page advertisement	\$50.00	\$500.00
Double page discount	\$90.00	
Inserts—\$40.00 for 500 inserts into hard copies		

There will be a small extra charge of \$50 for typesetting of adverts.

All advertising enquiries to
Denise Johnson

ALL ADVERTISING COPY MUST BE ACCOMPANIED BY PAYMENT
(cheques made payable to Windellama News)

Fees for Hire of Hall or Supper Room at Windellama Hall

*HALL	ALL DAY	\$200
	DAY 4hrs or less	\$100
	EVENING/NIGHT**	\$200

*Includes Supper Room & Kitchen

** \$2 per hour for heating

SUPPER ROOM (Includes Kitchen)

ALL DAY	\$80
DAY 4hrs or less	\$40
EVENING/ NIGHT	\$100

Use of the premises prior to your booked function will incur a surcharge of Supper Room Fee

To Book please ring W. P. A. Secretary, Frances Knights on 4844 5157

TARAGO TRANSFER & DRUM MUSTER STATION

Open Friday to Monday
8.00am—4.45pm.

Card required for household waste, or fees apply.

Free recycling of the following:

Plastics, tins, oil, batteries, glass, paper & cardboard.

Free recycling also of Chemical Drums providing they are empty, triple washed and have the lids removed

Tipping Fees for Tarago

Sorted Waste - Domestic Residents only

Car, station wagon, small ute or small trailer	\$13.00
Medium trailer, large ute or 1-tonne truck load	\$18.00
Large trailer load	\$27.00

Unsorted Waste and Non-Residents Waste

Garbage & trade waste (uncompacted, per cubic metre)	\$66.00
Garbage and trade waste (compacted, per cubic metre)	\$ 115.00
Other unsorted waste—	2 x sorted rate per category

Hard fill demolition waste not accepted at Tarago

Animals — Note:

Animal carcasses cannot be dumped at Tarago as there are no facilities for burial please refer to Goulburn Mulwaree Council for details on availability in this area.

Car Bodies	\$50.00
Tyres — Car Tyres (each) - per tyre	\$ 8.00
Motorcycle tyres (each)	\$ 7.00
Truck tyres (each) - per tyre	\$21.00
Tractor tyres (each) - per tyre	\$80.00

Community Information

Windellama Progress Association

Cathy Meehan (President) 4844 5554
 Frances Knights (Secretary) 4844 5157

Windellama Rural Fire Brigade

Jim Meehan (Captain) 4844 5554
 Rex Hockey (President) 4844 5147
 Ellen Sylvester (Secretary) 4844 5407

Windellama Field Day Committee

Cathy Meehan (Secretary) 4844 5554
 Frances Knights (Treasurer) 4844 5157

Windellama News

Denise Johnson (Editor) 4844 5087
 Gayle Stanton (Editor) 4844 5156
 Cathy Meehan (Sec / Treas) 4844 5554

Windellama Garden Cub Inc.

Pam Williams (Treasurer) 4844 5194
 Lynn Stockford (Secretary) 4844 5029

Windellama Hall Country Markets

Bob Shaw 4844 5001

Windellama Historical Society

Rex Hockey (President) 4844 5147
 Joanna Croker (Co-Secretary) 4844 5125

Windellama Landcare

Tony Greville (President) 4844 5047
 Sandra Greville (Secretary) 4844 5047

Windellama CFR

Kevin Muffet 4844 7143
 Shirley Cornish 4844 5101

Windellama School P&C

Terry Hannan (President) 4844 5337
 Heather Caulfield (Secretary) 4844 5120

Nerriga Nugget

Di Roberts (Advertising) 4844 5344
 James Lee (Articles) 4844 5449

Nerriga Rural Fire Brigade

John Rolfe (Captain) 4845 9160
 Justin Parr (Snr. Deputy Captain) 4845 9129
 Marie Kennedy 4845 9126

Wires (wildlife rescue)

Marian Pearce 4844 5244
 Southern Tablelands WIRES 4822 3888

Tarago Pony Club

4844 7014

Community Health - Goulburn

4827 3913

Community Transport

4823 4499

Justice of the Peace

Linda Shannon 0429 980 141
 Geoff Burns 4849 4330

FOR ALL EMERGENCIES
eg. FIRES / ACCIDENTS

PHONE 000

For Mobile users dial 112



Important Phone Numbers

Rural Fire Brigades

Windellama	Jim Meehan	4844 5554
Tarago	Des Kingston	4849 4503
Taylor's Creek	Dave Elward	4849 4240
Mt Fairy	Greg Brooke	4849 4681
Bungonia	Ian Tapper	4844 4460
Gundry	Tony Kent	4822 5078
Nerriga	John Rolfe	4845 9160
Bushfire Information		1800 059 333

www.windellamarfs.com.au or www.rfs.nsw.gov.au

WINDELLAMA PH: 4844 5359 or

CHANNEL 21/209 Base

AMBULANCE

Ambulance Booking	13 12 33
Goulburn Ambo Station	4827 0444

Windellama CFR First Aid

Ambulance on triple zero	
Kevin Muffet	4844 7143
SES	13 25 00
Poison Info. Service	13 11 26
Goulburn Base Hospital	4827 3111

Police



Tarago Station -	
Snr. Constable Brad Carey	4849 4411
Goulburn	4824 0799

Other

Goulburn Railway Station	4828 5816
Train info & bookings	13 22 32
www.countrylink.info	
Country Energy - interruptions	13 20 80
Lifeline	13 11 14
Kids Helpline	1800 551 800



August 2010

MON	TUE	WED	THU	FRI	SAT	SUN
30	31					1
2 Education Week School P&C Meeting	3 Willow Glen Gardeners	4	5 School Playgroup	6 Jeans 4 Genes Day 	7	8 SES CFR Recruitment Night St. Marks
9	10	11 School Afternoon Show	12 School Playgroup	13	14 Cancer Appeal Day	15 Country Markets @ the Hall
16 School Bldg. Opening Ceremony Progress Meeting	17	18	19 School Playgroup	20 	21 Fire Brigade Working Bee, Training & Meeting Federal Election	22 St. Barts 151st Anniversary
23	24	25	26 School Playgroup	27	28	29

**For details of times and places - see articles inside this issue
Emergency phone numbers are on the back of this page.**