

THE WINDELLAMA NEWS



Windellama Progress Association Hall Inc.
Vol. 17 no. 8 - August, 2013

Editorial & Layout: Denise Johnson & Gayle Stanton
Sec/Treas: Denise Johnson

www.windellama.com.au

Published Monthly

Hard Copy Distribution 400 - Website : 6,000 average/month
Windellama, Oallen, Nerriga, Bungonia, Mayfield, Quialigo, Lake Bathurst, Bungendore & Tarago

**DO YOU WANT 1300 EXTRA SAND & GRAVEL LADEN TRUCKS
TRAVELLING OALLEN FORD & WINDELLAMA ROADS ?**

**MULTIQUIP ARDMORE PARK QUARRY AT BUNGONIA
AIMS TO USE OUR LOCAL ROADS TO PROFIT FROM 10 TRUCK
MOVEMENTS A DAY 6 DAYS A WEEK !**

**WITH NO GREAT BENEFIT TO OUR COMMUNITY - MORE
HEAVY TRAFFIC ON OUR ALREADY DETERIORATING
ROADS - OUR COMMUNITY SAFETY IS AT RISK !**

>> HAVE YOUR SAY <<

We as a community have now have until August 9th to contact the NSW Department of Planning with our concerns. To contact their office, you can fax 02 9228 6466 or use the online form link at www.windellama.com.au or the direct link below.

http://majorprojects.planning.nsw.gov.au/index.pl?action=view_job&job_id=6037

The postal address for any correspondence is
Director Mining & Industry Projects GPO Box 39 Sydney 2001

This matter was discussed at length at the recent council outreach meeting. Our councillors are behind our community raising objections to the proposal. Please take the time to make a submission as we all want to live in a safe community. Unless we voice our concerns we will not be heard. The trucks could start the 1300 movements a year, down local roads, past our school, increasing the risk to our community. We all use these roads every day, this proposal does not only effect people who live on the proposed truck route. Please take the time to make a quick online submission.

YOUR OPINION COUNTS !

*** BURNING OFF? - Notification now required ***
Windellama Hall is your Neighbourhood Safer Place

Annual Subscriptions - please send your details and **\$20** (cheques payable to 'Windellama News') to cover the annual cost of postage.

All cheques please post to:

The Secretary, PO Box 705, Goulburn. 2580

* Unpaid subscriptions will be cancelled after one month

If you have any short articles, anecdotes, or something else interesting about yourself, your family, or the community; please write it down and drop it in our letterbox at the Hall. We will edit it and publish it in the Windellama News.

A LOCKED POSTAL BOX IS AT THE FRONT OF THE HALL, 3444 OALLEN FORD RD, IN THE STONE WALL FOR THE COLLECTION OF ITEMS FOR PUBLICATION

Items left in the box after the deadline will not be collected or included in the News

Articles, adverts, etc may also be sent by email to:

newswindellama@gmail.com

Adverts sent by email will not be inserted unless payment is received by the deadline.

Our Policy on Receipts

The Windellama News makes out a receipt for all advertising payments made to the paper. We don't post out receipts to save cost and we assume that the appearance of the advertisement in the paper could normally be taken as proof of payment.

If you require a posted receipt please include a stamped self-addressed envelope with your payment.

It would be greatly appreciated if anyone sending money to the Windellama News would include their name and address and a note saying what it was for and put it in a sealed envelope. This would avoid a lot of confusion and uncertainty .

Notice to advertisers, article submitters & readers

The Windellama News is published and authorised by the Windellama Progress Association Inc. Whilst every care has been taken in the production of the News & publishing to the web page on the community website, the editor takes no responsibility for any inaccuracies, errors or omissions. All such contributors by forwarding advertising, notices, & articles, agree to indemnify the publisher & warrant that the material is accurate & neither deceptive nor misleading, in breach of copyright, defamatory or in breach of any other laws & regulations.

The responsibility for advertisements complying with the Trade Practices Act lies with the person, company or agency submitting such for publication. Original material appearing in this newsletter is copyright. It may be reproduced in part or in whole for the benefit of the community, provided that the source of the material is fully acknowledged. If you have any queries about using material from the Windellama News, please contact the editor.

BUSINESS DIRECTORY

| | |
|-------------------|----------------|
| Animal Services | 22, 18, 26 |
| Builder | 36 |
| Electrician | 24 |
| Entertainment | 6, 4 |
| Glass | 22, 28 |
| Handyman Services | 22, 26, 34 |
| Health | 30 |
| Home supplies | 8, 12, 4 |
| Home Services | 28, 30 |
| Mechanic | 30 |
| Nursery | 16 |
| Office supplies | 8 |
| Piano | 24 |
| Plumber | 18, |
| Real Estate | 10 |
| Rural equipment | 22, 14, 18, 22 |

Inside this Issue.....

| | |
|--------------------------|-------|
| ***** | 5 |
| Progress Assoc / SES CFR | 7 |
| Gardeners Groups | 9 |
| Landcare | 11 |
| Nerriga Happenings | 15 |
| School News | 17 |
| **** | 19 |
| Fire Bridade | 21 |
| Historical | 27 |
| Gardening Tips | 29 |
| Church Info | 33 |
| Alpacas | 35 |
| Classifieds | 36-37 |
| Community Information | 38-40 |

DEADLINE FOR ALL ISSUES IS THE 20TH OF THE PRECEDING MONTH

YOUR WINDELLAMA NEWS IS PRINTED BY BUSINESS REQUISITES, GOULBURN

Community Notice Board

CLAIM THE DATE

A CanAssist fundraiser by the Windellama Garden Club will be at Windellama Hall on Saturday the 3rd August starting at 10am.

Raffles, Stalls, children's' activities, BBQ lunch.
A cake auction will start at approx. 12 noon.

All proceeds will go to CanAssist local charity.

PLASTIC RINGS REQUIRED

The Goulburn Hand Spinners & Weavers group are collecting plastic rings from milk bottles, cordial bottles, fruit juice bottles, jars with plastic lids.

These will be used for a project of felting with school students to be displayed at their School Expo in September.

Please place in the container hanging on the fence at Windellama Hall.

For any information just contact Irene on 4844 5214.

RAINFALL

Would you like to contribute your rainfall stats each month?

Please contact either editor to discuss. Just a phone call or email is all it takes to have yours listed in the annals of the Windellama News.

NOTICE TO SUBSCRIBERS

As from 1st September our annual subscription fee will be increased to \$25 due to increased costs of stationery & postage fees.

The Willow Glen Garden club members offered to clean up the excess foliage growth at St., Bart's Church, Windellama. I, as President of the Windellama Garden Club, wish to thank Warren and his merry band of workers most sincerely for their good humour and hard work. It was pleasing to see the two Clubs co-operating in this way. There was a chance for an extra chat over a cuppa. The idea is to carry out the same exercise next year.

Thanks to all

Boro / Mt Fairy Rural Fire Brigade
Open Day and TrAsH & TrEaS-uRe
on Sat 28 Sept 9am-3pm at the Fire
Shed Mt Fairy Road

Contact Tony 0412 128 755 Open Day
Jenni 0429 200 456 TrAsH & TrEaS-uRe

Buy, sell, learn about fire safety, free
sausage sizzle, kids activities

FLICKS N FLECKS MUSIC TRIVIA

Its on again!!

The Phoenix Committee Flicks n Flecks evening to be held at the Goulburn Workers Club Saturday August 31st at 7.00pm.

For those who love music and would like to prove their knowledge or just come along and join in the fun this is an evening for you, with all the fun of the popular TV Show you will take part in round of questions such as: Know Your Product, with questions from all genres of music: Draw me a song—Substitute – Samplemania- Final Countdown plus other great music rounds.

The evening will consist of music related riddles, games and questions, where teams will go head to head with other music buffs to emerge winners. It's a great chance to test your knowledge, and have a fun night.

Grab 5 friends, pick a catchy name and enter your team of 6 – to be part of this entertaining night, pitching your music savvy against others

As well as having a great night you will be helping raise funds for Essential Equipment for patients and clients at Bourke Street Health Service

Tickets will be available at BSHS in early August.

The evening could be a lot of fun – all we need are Teams!! Teams!! Teams!!

GARAGE SALE

WHERE:

“Lumeah” 3541 Windellama Rd Windellama NSW

A couple of kms past Primary School on the left going towards the hall,
Second property back follow the signs

SATURDAY 10th AUGUST 10am to 4pm

Weather permitting, will be postponed in really wet weather

Clearance of farm equipment & other items

Some furniture & General bric a brac



SMH Civil Engineering

SMH Civil Engineering Pty Ltd

Strategic Engineering Solutions

- ✓ Project & Construction Management
- ✓ Geotechnical & Environmental Engineering
- ✓ Remediation / Contaminated Sites
- ✓ Waste Management / Resource Recovery
- ✓ Quarries / Mining / Landfills
- ✓ Rail Infrastructure / Asset Management

www.smhce.com.au

info@smhce.com.au

0418 563 888

Postal only - PO Box 999
RIVERWOOD NSW 2210



Goulburn & Southern Tablelands Newest Winery

Cellar Door Upcoming Open Days

Hours – 11am to 4:00 pm

AUGUST: Saturday 10th,

Sundays 11th, 18th

~check website for any changes or
call prior for a drop in visit or purchase anytime ~
*25 kms down Windellama Road from Goulburn
turn left into Muffets Road*

email: admin@yarralawsprings.com.au

web: www.yarralawsprings.com.au



133 Muffets Road, Quialigo

Ph 4844 7188



Starting at
10.00 am
Saturday 3rd
August
Windellama Hall

Hot lunch, soup, sausage sizzle, drinks,
stalls, chocolate wheel, raffle and cake auction.



Come along and have a fun day

THE LOADED DOG HOTEL TARAGO EST. 1848



Hoteliers: Nicole and Mark Ryan
Ph: (02) 4849 4499 Fax: (02) 4849 4603
Wallace Street, Tarago

Live Music @ The Dog

Free Entry

**SOCIAL
DARTS
@
THE DOG**



**PLAY YOUR
FAVOURITE TUNES
ON THE DOGS
NEW DIGITAL
JUKEBOX**



THE DOG BISTRO

Friday - Saturday - Sunday

Open for Lunch 12 noon - 2pm & Dinner 6pm - 8.30pm



Friday Nights

Kids eat FREE *

*Children under 12 years only.
Must be seated & accompanied by
an adult at all times.



**NICOLES'
fish n' chips
Thursday
6 - 8pm**

**SEAFOOD SUNDAY
From 6pm**



◉ Smoke Free air-conditioned bar

Coffee @ The Dog

◉ Bottle Shop



This month has been consumed by worries about the modification to development approval by Ardmore Park Quarry.

At our most recent Outreach Meeting with Goulburn Mulwaree Council, the largest for many years, councillors were left in no doubt that the proposal met with overwhelming local opposition.

Approval has been given for an extractive and processing industry at Ardmore Park with strict conditions, one of which is a bypass of the Bungonia village and upgrade of Jerrara Road. Since then the company has apparently decided it would be cheaper for them to apply for a modification to the approved route and have lodged an application to use the Oallen Ford/Windellama/Brisbane Grove & Braidwood Roads to access the Hume Highway. They are asking for 20,000 tonnes per annum on this route and call it "local deliveries". This route will take heavy trucks past Windellama School up to ten times a day, plus return. There are three school buses using these roads twice a day and when the other roads mentioned in the Environmental Assessment, Lumley, Cullulla and Tarago, are taken into account, it adds another two school buses.

The greatest fear raised at a public meeting at Bungonia with Pru Goward, our local member, apart from the safety issue, was that if this modification is granted, more will be sought to deal with the remaining 380,000 tonnes per annum in the original Approval.

PLEASE CONSIDER THIS MATTER CAREFULLY!

Details for submission can be found elsewhere in the "News" or on windellama.com.

Not much else has been happening.

Next Progress meeting will be held at Windellama Hall on Monday 19th August at 2 pm.

Frances Knights

Secretary

Windellama SES First Aid & CFR

The building progression has been slow due to the rain, muddy conditions outside prevent the plumber from completing his work. The Council cannot do the final inspection until the plumber has finished. We of course must have the rain.

Our C.F.R. unit has been very busy this month, and it is not over yet by a long shot. This of course, means that there have been more sick people in our area, unfortunately.

The new C.F.R. recruits, (God bless them), are well on there way to completing the preliminaries before coming fully fledged members. There must be some of you who are willing to come on board. There is still time to get you in the next intake (just).

Kevin Muffet

S.E.S. & C.F.R.

Rusty Balls

- Natural bush soaps
- Pet shampoo
- Anti-bug balls - natural insect repellent
- Blind Baking Balls
- Hand made ceramics

Gary & Denise Johnson

4844 5087

sales@rustyballs.com

www.rustyballs.com

SHEPHERD'S HILL NURSERY

321 George St, Marulan

Ph 4841 1404

Fax: 4841 1454 Mobile: 0413 047 105

Look for the house on the hill

**For all your garden needs &
acclimatised plants**

Potted colour, Seedlings, Bulbs, Fruit trees,
Ornamental trees, Windbreakers,
Shrubs and more
Potting Mixes & quality soils & mulches.
Pots, Statues & Gifts

Gift vouchers & Eftpos available

We are members of NGINA
Nursery & Garden Industry NSW & ACT



A1 SEPTIC TANK & GREASE TRAP CLEANING SERVICES



0408 483 943

Bob Baird Goulburn

PH: 4822 3290

7 DAYS—SERVICING ALL AREAS

BUSINESS REQUISITES Sales & Service

- Photo Copiers
- Fax Machine
- Cash Registers
- Computers
- Stationery
- Consumables

Ph: 4821 5109

E: bus_req@ozemail.com.au

10 Russell Lane, Goulburn

Printer of your Windellama News

Nerriga Gardeners

Thank you to all who looked after themselves at my place until I arrived home & then continued to look after themselves, me& the fire. It feels a little strange that jonquils, anemones & spring stars are starting to flower in July. I have heard it said that hebes are a hard plant to like, but it is nice to be able to have home grown cut flowers in the house in winter.

On Wednesday 21st August we will be going Robyn & Justin's home, Rivendell, 7650 Nerriga Road Tomboye.

As usual please bring a plate to share for lunch& all are welcome.

For further info Kay Hamer 4845 9021 or Di Roberts 4844 5344

Willowglen Gardeners

<http://www.whispersfromwillowglen.blogspot.com>

On a foggy and cool morning a group of workers from Windellama Garden Club and Willow Glen Garden Club joined forces for a clean up of the gardens at St Bartholomew's, Windellama.

We had a good turn up of members and set up the urn and goodies for morning tea, then set to work. Pam Williams had her trusty whipper snipper and Lloyd had his extendable little chain saw to lop off the dead branches of trees. Everyone was busy cleaning out the weeds and dead shrubs.

Warren led a meeting at morning tea and were reminded of the Windellama Garden Club cake auction on 3rd August at Windellama Hall. Proceeds to Can Assist, Goulburn. We then got back to work and set up a fire to burn the dead wood and blackberry bushes etc. Kevin Moffet stayed to ensure all the rubbish was burnt and left in a safe state.

We all had a good time working together and decided to make it an annual event. Both garden clubs to meet in July at the Church yards to ensure all is kept in order.

By Judy Yates

Windellama Garden Club Inc.

We had a great day out at our clean up day at St. Barts. Lots of pruning, weeding and tidying up and lots of talk and laughter.

Thank you Willowglen people for your great help.

Our cancer fundraiser for Can Assist will be on the 3rd August at Windellama Hall, starting at 10.00 am.

There will be stalls, a chocolate wheel and activities for the children. Come along and buy a cake at the auction, commencing at 12 o'clock (approx). Graeme Welsh will be our auctioneer again and we are very appreciative of the time he donates each year..

On your bike for the 2013 Goulburn Grand Prix Cycle Challenge

Following the success of last year's event, the Goulburn Grand Prix Cycle Challenge is on again on Sunday, September 22.

Now it its fourth year, the Goulburn Grand Prix Cycle Challenge (GGPCC) is a great day out, with various rides that cater for all ages and abilities.

This year's events will again be starting from Carr Confoy Park in East Goulburn. The events include a 4km family ride on paths around Goulburn Golf Course, a 25km ride to Gundary, a 60km ride to Windellama, and the Grand Prix 85 – an 85km round trip that takes in Windellama and Bungonia and follows the course used for the first Australian Motorcycle Grand Prix held in 1924.

For more information about the event or to register go to <http://www.ggpcc.com.au/>



• Rural & Residential • Houses & Land • Acreage • Appraisals & advice • Rentals

4 Wallace Street
Tarago NSW 2580

Phone: (02) 4849 4297

Fax: (02) 4849 4382



SALES — Judy Alcock
judy@taragorealestate.com.au
Mob: 0439 603 234

RENTALS — Debbie Carey
debbie@taragorealestate.com.au

Friendly, local professionals
Honesty and professionalism guaranteed
Affiliated with all major real estate listing websites
Available 7 days by appointment



www.taragorealestate.com.au

GARAGES • FARM BUILDINGS • BARNES • EQUINE • INDUSTRIAL • STEEL KIT HOMES



CATALOGUES AVAILABLE FROM TARAGO REAL ESTATE OR TARAGO SERVICE CENTRE



Need more living space?

We can customise most of the rural and industrial buildings to suit your needs.



Consider Wide Span Sheds

The Wide Span Sheds range includes barns, farm buildings, stables, carports, garden sheds, homes, weekenders and studios.



Need a Builder?

We can put you in touch with local experienced, professional shed and house builders.



Call Tarago Real Estate (02) 4849 4297
...your local authorised agent for all your building requirements.



WINDELLAMA LANDCARE NEWS

We are having a quiet time this month – some members have even headed to warmer climates – so there is not much to report ...

INTERESTED IN JOINING LANDCARE?

Have you thought of joining our Landcare group – where you can learn how to tackle the land management issues of our sensitive soils? It is also a great social activity – meeting local people while learning about our unique local area. Annual membership of Windellama Landcare is \$5.00 per family. Children are very welcome. If you are new to the area and are interested in joining Landcare why not join us at one of our working bees to see what we do? Phone Warren, the President, on 4844 5350 or Sandra, the Secretary, on 4844 5047.

WILD WINDELLAMA

Carina Clarke's articles, accompanied by her beautiful sketches, about birds, animals, plants, insects, fish and reptiles of the local area were published in the Windellama news over a number of years, are now collected in a two volume set called Wild Windellama. Copies are available from the Secretary, Windellama Landcare (02 4844 5047) at \$10.00 per set.

WORKING BEE

August has also been declared a time of hibernation for Windellama Landcare so curl up by your heater with a good book and we will let you know later about what's happening next month.

Scotch broom sweeping across Goulburn Mulwaree

Scotch broom, *Cytisus scoparius*, is in the spotlight for the month of July. This class four noxious weed occurs in small patches across the Council area.



Scotch broom flower

The shrub grows to 3 meters tall, with main stems up to 5 cm and during spring will display small green deciduous leaves and bright yellow flowering. Scotch broom is a hardy shrub tolerating temperatures down to about -25°C and contains toxic alkaloids that can depress the heart and nervous system.



Scotch broom pods

Scotch broom is a highly competitive plant that is able to spread into intact pasture, native areas and disturbance accelerates its invasive abilities. It has a rapid growth rate and high seed output and longevity that gives it a competitive advantage over other desirable species.

Scotch broom has an innovative seeding mechanism. Its seed pods burst open in hot weather when mature, and eject seeds up to several metres away. Seed can be readily carried in run-off or be buried by ants. The wide spread of seeds can also mean humans and vehicles will move seed around.

Scotch broom can be challenging to control and requires vigilance and perseverance once the plant is established due to seed bank longevity. Foliar spraying, cut and paint and manual removal are all possible options for small infestations.

For more information on identifying and controlling Scotch broom get a copy of our Weed of the Month flier from the Civic Centre foyer, Goulburn Mulwaree Council's website at www.goulburn.nsw.gov.au under the Noxious Weeds link or contact Goulburn Mulwaree Council on 4823 4444.

Better Heating

A lot of places are selling heating products, like wood & gas heaters.
The difference is WE can show you how to use them!

We have the largest range of wood and gas heaters in Goulburn.

**LARGE RANGE
FRIENDLY STAFF**

**GREAT PRICES
GREAT SERVICE**



4821 1252 or 4821 4885

388 Auburn Street, Goulburn www.barbequesgalore.com.au

**BARBEQUES
GALORE**

BBQ Better.



Our last excursion was fantastic, so don't miss out on the next one which will be to "Maplesville" 10th August will be the date for our August Excursion (weather permitting)

"Maplesville" is an old Qualigo/Windellama property, with lots of history. We will starting at the Museum at around 10am for morning tea.

The cost will be \$7 for morning tea \$12 includes a light lunch.

All are very welcome to attend but please let us know if you are attending by ringing one of the committee members below.

Hope to see you at our next excursion on the 10th August

The Gold display will be on show for the next few months (without the Nugget) so don't miss out on seeing Windellama's Gold history at the next Market day.

The museum is open on Market Days – the third Sunday of each month 10am – 2pm

We have volumes 1&2 of Wild Windellama by Carina Clarke for sale and available at the Museum for \$15.00

There is a selection of Windellama local history books by Tom Bryant and books by a local poet, Rex Hockey, for sale in the museum as well as Motorcycle Grand Prix Posters for only \$20, bookmarks and postcards with images of early Windellama.

Our next meeting will be
Saturday 3rd August 10am

NEW MEMBERS ARE ALWAYS WELCOME

For any enquiries please contact:

Rex Hockey 48445147 President

Julian Woods 48445270 Secretary

Marcia Tatam 48236854 Treasurer

The Community Outreach Meetings for 2013 will be held as follows:

| Date | Venue |
|-------------------|---|
| 13 August 2013 | Marulan (Marulan Hall) |
| 27 August 2013 | Parkesbourne (Parkesbourne Uniting Church Hall) |
| 10 September 2013 | Tarago / Lake Bathurst (Tarago Community Hall) |
| 24 September 2013 | Towrang (Towrang Community Hall) |
| 8 October 2013 | Tallong (Tallong Memorial Hall) |
| 12 November 2013 | Bungonia (Bungonia Community Hall) |



Goulburn Off Road Carts

www.offroadcarts.com.au

OPEN 6 DAYS



PORTABLE PETROL GENERATORS
From \$770



LARGE DIESEL GENERATORS
\$5,900



CARTS & BUGGIES
From \$3,300



FARM BIKES
\$2,600

**QUAD
BIKES**
From
\$5,000



4WD TIPPERS \$3,950



FULLY EQUIPPED FIRE TRAILERS
\$10,700

ENQUIRIES & SALES - PHIL BONSER

565 Mt. Baw Baw Rd, Goulburn NSW 2580

Mobile: 0419 694 148 Ph: (02) 4821 0397

What's Happening in Nerriga

Riders joining the Annual United Tourers Winter Rally took a pitstop at the Bark Tree Hotel, Nerriga on their way to the property near Nerriga



Having successfully upgraded the building and interior to its current good looking status, publican Kyle Lumsden has sold the Nerriga Pub and moves to the other side of the bar. Good luck with your new venture, whatever it might be

New owners Phil and Sarah Smith will be the publicans as of the end of July and we wish them luck.

**NERRIGA PROGRESS & SPORTING ASSOCIATION
ANNOUNCEMENT OF
2013 ANNUAL GENERAL MEETING**

**to be held at 2PM SATURDAY AUGUST 10, 2013
at
Nerriga Hall, 6088 Nerriga Road, Nerriga NSW 2622
All are welcome**

Enquiries – Helen Rolland, President,

Tel: 02 4845 9115

WINDELLAMA PLAYGROUP

at

Windellama Public School

Each Thursday

9.30am – 11.30am



BYO snacks - tea & coffee supplied

Qualified art teacher visiting each fortnight

Bring your bubs & toddlers for a fun morning

Music, stories, sand-play, free-play, art, craft.

FREE!

For more info ring Tony at the school on - 4844 5130

(NO PLAYGROUP IN SCHOOL HOLIDAYS)

**This
space
available
for
\$12.00**

Nirvalley
Homestead 
NURSERY

629 CULLULLA ROAD, TARAGO

T: **4849 4481** M: 0419 257 663

**BARE ROOT
FRUIT TREES &
ORNAMENTALS**

are in stock now

Sat & Sun 8-5pm, Fri & Mon 10-3pm

Other days - call to check times

Quality Plants • Best Prices

Windellama Public School News



email: windellama-p.school@det.nsw.edu.au
Website: www.windellama-p.schools.nsw.edu.au

Phone: 4844 5130
Fax: 4844 5265

TERM 3

The students have come back nicely refreshed after their school holiday break. We have another busy term ahead of us with many rich educational experiences to participate in.

CREATIVE AND PRACTICAL ARTS

At Windellama we value all aspects of the curriculum and the arts are no exemption. This term we have the pleasure of hosting the Sydney Conservatorium when they come and perform for us and introduce our students to string instruments.

GOULBURN COMMUNITY OF PUBLIC SCHOOLS (GCoPS) ANNUAL CONCERT

The students in Year 3 to 6 will again participate in the GCoPS Concert. Students really enjoy taking part in this event and everyone will sing in the choir. We will also team up with the students from Tirranna Public School to perform 2 recorder pieces under the wonderful guidance of Goulburn Conservatorium teacher Keva Abotemy.

2013 CALENDAR – TERM 3

Tennis Begins Monday 22 July
Conservatorium of Sydney String Quartet Concert – Wednesday 24 July
The Ned Show – Thursday 26 July
Goulburn Community of Public Schools Concert Monday 29 July at The Goulburn Workers Club
Creative & Practical Arts Day at Tarago – 2 August
P&C Meeting – Monday 5 August at 6.30, everyone is welcome
Daffodil Day – Friday 23 August

THE NED SHOW

The NED show is an exciting performance coming to our school this term. It is a high energy, motivational performance with lots of active participation for kids. Presented through storytelling, humor, visuals and audience participation, The NED Show utilizes a multi-sensory learning model to motivate... encourage...INSPIRE students to become champions at school and in life. This program promotes positive attitudes, better behaviour and academic achievement in school. The character education program is based on the acronym NED -

**Never give up,
Encourage others and
Do your best.**

PREMIER'S SPORTING CHALLENGE

This term all students are participating in the Premier's Sporting Challenge. To enable students to fulfil all aspects of this challenge they will engage in Fundamental Movement activities during fitness, sport and tennis lessons with tennis coach Dave Ridland.

TECHNOLOGY AT WINDELLAMA

Our students enjoy working with technology. All of our students have access to computers in our classroom as well as Interactive whiteboards.



Lowline Cattle

Quite, easy to handle stock - smaller size means easier handling, less stress on fencing & less soil compaction!



Great for first time cattle owners & for introducing children to cattle

Heard of Wiltipoll Sheep?

Wiltipoll sheep don't need shearing they shed their wool, are very hardy, don't crawl or wander, & produce fantastic fat lambs!



Windellama Downs

Producing quality, Australian breed cattle & sheep suitable for any size rural holding

Stock for sale

Commercial or registered stud stock
Mob: 0416 047 488 Ph: 4844 5715
Email: windellamadowns@iinet.net.au

Need a Plumber Call. . .



GRAHAM MOON

Lic. No. 194029C

Plumber - Drainer - Gas Fitter

Roof Plumber - L.P. Gas

DOMESTIC & COMMERCIAL - 7 DAYS

Phone **0428 223 677**

AARON'S MINI EXCAVATIONS

ABN 84197940351

- * BOBCAT
 - * 5 TON EXCAVATOR
 - * TIPPER
 - * SITE PREPS DRIVEWAYS
 - * SITE / PROPERTY CLEAN UPS
 - * POST / PIER HOLES
 - * TRENCHING & DRAINAGE
 - * RETAINING WALLS
 - FREE QUOTES**
- 4841 1862 - 0418 111 862**

SAMCOD EQUINE SERVICES



- BREAKING IN
- TRAINING
- FARRIER SERVICE

Carl Estall

Phone: 4844 4225
Mobile: 0411 517 758
Email: caranel@bigpond.com

Goulburn & Surrounding Areas

Countrywide Shower Screens



Shower Screens

- Frameless • Semi-framed • Framed

Mirrors

- Bevelled • Polished

Mick Greenwood
0448 494 220

Fax: (02) 4849 4220

E: countrywideshowercreens@bigpond.com

Free Measure and Quote



Page 4 extract from Goulburn Evening Penny Post Saturday November 23, 1895

FRIDAY'S POLICE COURT

THE FIRE AT THE JACQUA PUBLIC SCHOOL

John Blake, of near Bungonia, **was** charged with having used fire in a careless manner, thereby, occasioning the destruction of the Jacqua Public School on 23rd October last.

Mr. Betts appeared for defendant.

Constable Hahey deposed that on 10th instant he saw the defendant in reference to a bush fire that occurred at Jacqua in October ; witness said, "I believe you burned a trail near your log fence on the 22nd October", he replied, "I did: I won't deny that;" he said he burned it on Crown land adjoining his place on the land where the school was ; he said he did not give any of his neighbours notice excepting his father ; he said he watched the fire on Wednesday ; on Thursday he came into Goulburn, and when he returned he was surprised to find that the Jacqua Public School had been burned down.

Edward Armit, living near Bungonia, said he helped defendant about a month ago to burn the trail along the log fence in question; the fence divided the defendant's ground from the Crown lands on which the school was; they put the fire out with bushes after the trail had been burned; there were a few logs and a tree burning when they left on the Wednesday; defendant asked him to give an eye to the tree that was alight on the Thursday, he went in the morning and saw that **the** tree was still burning ; there was a very strong wind blowing at the time ; when he saw the tree it was half burned down ; the wind was blowing in the direction of the school from the tree; a distance of about a mile intervened; a big fire occurred later in the day and the school was burned down.

To the Bench : Witness saw no other fire in the vicinity of the school on the Thursday: the bush on the other side had been burned, and he believed some of the logs were still burning on the 23rd; he saw the tree several times on the Thursday; he was at the fire all day trying to keep it back after he found it bad spread ; when the fire broke out it might have been about a couple of hundred yards from the tree, and in places it joined the trail which he and witness had burned : the country was burnt for miles; the wind would blow the sparks from the tree about 200 yards.

To Mr. Betts: The trail was burned to protect defendant's fence and grass; when they burnt it there were bush fires all about the place.

The Police-Magistrate, who had previously expressed the opinion that the matter should have been referred to the coroner before being brought before the Bench, remarked that defendant should have been charged under a different part of the section, viz, that of having left a fire in the open before it had been thoroughly extinguished. It was a lesser offence, but the one which had been preferred against defendant was a very difficult one to prove, he was also very doubtful whether the clause referred to ordinary bush lands. He had always been under the impression that it only re-ferred to cultivated paddocks.

Mr. Betts said that he was of the same opinion, As the words of the Act were "stubble or grassland".

The first charge was ultimately withdrawn, upon Mr. Betts agreeing to plead guilty on behalf of his client to the charge of having left the fire without having thoroughly extinguished it, and defendant was fined 40s with 5s 6d costs. The Police-Magistrate said he was pleased Mr. Betts had accepted his suggestion, as a deal of time and expense had been saved.

(The school referred to would have been behind the existing "Jacqua" homestead behind the hill. Mr. John Blake was a son of Thomas Blake of "Yarralaw" homestead.)

WINDELLAMA HALL COUNTRY MARKETS

SUNDAY
21st July

9AM TO 1PM

LOCAL PRODUCTS
FRIENDLY ATMOSPHERE
FOOD & REFRESHMENTS
PLENTY OF PARKING
MUSEUM OPEN

Enquiries to Bob Shaw on 4844 5001

Market Day kitchen helpers needed to serve food and drinks
once or twice a year.



WINDELLAMA VOLUNTEER RURAL FIRE BRIGADE



Report all Fires 000
& Emergencies

RFS website www.rfs.nsw.gov.au
Captain - Rex Hockey 4844 5147

Brigade enquiries 4844 5359

or

Yass - 6226 3100
UHF 21
Brigade website www.windellamarfs.com.au
Snr Deputy - Lynton Roberts 4844 5118

BUSH FIRE DANGER PERIOD FINISHES ON 31ST MARCH 2013 **SOUTHERN TABLELANDS ZONE**

Burning-off now permitted with regulations

While the fire season has finished and permits are not required for burning off from the 1st April 2013, there are still regulations that must be followed.

Yass **MUST** be notified 24 hours before you light the fire, during business hours 9am to 5pm and by 3.30pm on Friday afternoons, phone 6226 3100.

Your immediate neighbours must also be notified.

Notify the Brigade as a courtesy to save time, if smoke is spotted, phone 4844 5359.

For more information contact one of the Brigade phone numbers above.

**** Windellama RFS Open Day Saturday 28th September 11am – 2pm ****

All welcome come along and meet members of the Brigade, enjoy a sausage sizzle.

Last Month

Over that last month the Brigade attended two motor vehicle accidents otherwise it was quiet for the Brigade.

While we have had a lot of rain recently, residents who are hoping to conduct burn-offs are reminded that the condition outlined above **MUST** be carried out and care must be taken particularly if windy conditions have been forecast as burn-offs may need to be postponed until conditions improve.

Training

If you wish to take part in the Windellama Brigade training or be contacted by email regarding the monthly training details visit the Brigades website and send an online contact form or email windellamarfsttraining@gmail.com. For information on training dates, times and scenarios check the Brigade website or contact the Captain Rex Hockey 4844 5147.

www.windellamarfs.com.au

General Meeting 24th August - 6pm **Training** 24th August – 1pm – 4W Driving

General Meeting 28th September - 6pm

Training 28th

September - 1pm - TBA

Please take care on our roads and see you at the next training and meeting. **All welcome.**



*Sales, service & parts for
Kubota & Yanmar Tractors*

* Implements * Loaders
* Slasher * Post Hole Diggers, etc

Diesel Traders

38 Saggart field Rd, Minto

Ph 02 9820 5566

Fax 02 9820 5878

www.dieseltraders.com.au



TRAIN YOUR DOG

Scott Borland
Dog Trainer

Obedience Training
Advice on Dog Behaviour
Dog Minding / Pet Products

0404 001 439
info@trainyourdog.com.au
www.trainyourdog.com.au



BRIAN'S AUTOSCREENS & GLASS

Mirrors · Showers
Mirror Wardrobes
Windscreens · Glass
Security Screens etc.

440 Auburn St Goulburn

Ph 4821 2633

Fax 4821 9133

Andrew Pearson

4844 5838 or

0400 285 765

REASONABLE RATES

FOR HIRE

With Operator

Backhoe - Slasher - Loader

Grader Blade w/rippers

SCRAP METAL REMOVAL

MOBILE MECHANICAL REPAIRS

Diesel / Petrol

Auto Electrical

For your truck, tractor, car

D & J RIGOLI



**HANDYMAN SERVICES
&
PROPERTY MAINTENANCE**
ABN 43002820238

* INTERIOR LINING
* SMALL RENOVATIONS
* SHED TO HOME CONVERSIONS
* PERGOLAS * VERANDAHS
* PAINTING * TILING * PAVING

And much more...
no job too big or small !

Will beat any reasonable quote

Ph: **4844 5393**

Mob: **0419 492 799**

Fax: **4844 5163**

E: dickrigoli@gmail.com

Family connection to War Memorial spans three generations

Among the volunteers at the Goulburn War Memorial is a family connection that spans three generations.

Phillip and Judy Fowler and Cathy Robertson (nee Fowler) are all working together at the War Memorial Museum, cataloguing war artefacts and generally assisting with the place.

Phillip's grandfather – A. H Fowler fought at the Somme. He was also a carpenter at Kenmore Hospital for many years.

Also, Phillip's great-uncle Private Cyril Fowler, was in the First Contingent E Company that fought at the Battle of Elands River in 1900 during the Boer War. His name is listed on the Boer War Memorial in Belmore Park.

Cathy Robertson (nee Fowler) has been reading her great-grandfather's (A.H.Fowler's) diary and discovering some interesting things about him.

"He fought in France, and he was used to that landscape, so he probably was helpful in engineering how to get the stones up onto Rocky Hill to build the War Memorial in the early 1920s," she said.

Cathy, who served in the Australian Army, said the work environment at the War Memorial was stimulating and that it was also fun working alongside her parents.

"It is very exciting and interesting and a privilege to be working as a volunteer up here when you think that every item belonged to someone - a soldier or a family member of a soldier. There is a story to every piece we have here and finding out those stories is fascinating," she said.

"We have objects that have been donated from the former Kenmore Museum that were part of the Kenmore Military Hospital (1942- 1946). We are cataloguing these and other items at the moment."



The Goulburn War Memorial was built as a lasting tribute to the men of Goulburn and district who served in World War I. The War Memorial is a square tower of stone conglomerate and concrete standing 20m high, with Rocky Hill as its base. Inside the tower is a tablet inscribed with the names of those who enlisted in WWI from the district. It was opened in 1925.

The museum is open Saturdays and Sundays, public holidays, Anzac Day, Remembrance Day and school

holidays from 10am-4pm, it is also open most Wednesdays from 9am-2pm and at other times by appointment. For more information contact Goulburn Mulwaree Council on 02-4823 4444.

Industrial • Commercial • Rural • Domestic
Ph 4844 7088 **INSTALLATIONS** 0418 234 289

ALLARD

ELECTRICAL CONTRACTING SERVICES
SOLAR UTILITIES & ENERGY SERVICES
GAS-OIL COMBUSTION SERVICES
stevenallard@bigpond.com

ELECTRICAL LICENCES:

NSW Lic.No 198855C
NSW Lic.No 498875S
ACT Lic.No 2009576
QLD Lic.No C13290

ACCREDITATIONS

AUS C.E.C. Design & Install Grid Connect
& Stand Alone Solar Systems #A3632173
ACT Type (B) Gas Appliance #200732
NSW O.H.&S. General Induction #03655
NSW Confined Space Trained #1140909

RON WENBAN

Local Electrician

Accredited Solar Installer

0428 445 259

ronwenban@skymesh.com.au

NSW LIC No: 174303C ACT LIC No: 2008568 CEC Accreditation No: A0597678



Southern Districts Piano Service

Pianos • Pianolas • Tuning • Repairs
Re-polishing • Removals

Graham Price

02 4844 5329



CJ Solar

"Quality Systems that last"



Home, Business or Community
Organisations

**Custom Designed To
Meet Your Energy Needs**

- ◆ Stand Alone Systems
- ◆ OnGrid With Battery Backup
- ◆ Grid Connect
- ◆ Clean Energy Council Accredited

Ph: 4849 4225

www.cjsolar.com.au

PREVIOUSLY TRADING AS SUN POWER

LICENSED ELECTRICAL CONTRACTORS (241654C)

GOULBURN REGIONAL PROSPECTING AND FOSSICKING INTERESTED HOBBIEISTS

We are pleased to advise interested hobby prospecting and fossicking folk in the Goulburn region, that the opportunity now exists for them to become members of a socially friendly, informal, special interest prospecting/fossicking group, without all the formalities of 'club' involvement and connotations. This unique opportunity is being made possible for interested community folk with the co-operation and encouragement of Goulburn U3A who are offering their support for the idea and beneficial community concept of an interesting special interest hobby group.

Thanks are due to Brian Spilsbury, the president of U3A, and his dedicated staff of volunteers, for offering their experienced leadership skills etc., by offering encouragement for such a venture. Their support and backing, with the use of premises and activity facilities, will provide a wonderful practical location for the operation and administration etc., of the proposed special interest fossicking/prospecting group and its activities. This support structure can truly benefit the ongoing future development of this special interest group. A lot of serious thought has gone into what is being proposed and how to achieve satisfying, uncomplicated participation for interested members.

We need your sincere acceptance of an invitation to attend an informal gathering of all potentially interested folk, on Saturday afternoon, the 10th of August from 1pm till 3pm at the Mc Dermott Centre, in Auburn St, Goulburn, NSW, (next to the P.O.). A briefing on guidelines, operational function, features and benefits envisaged for this proposed informal special interest group, will be outlined to all. You will also be invited to comment and discuss the proposal, and be encouraged to enroll your registration of membership and active participation.

Following the 10th August gathering, a second meet has been scheduled for members to prepare plans for a forward working agenda. Saturday afternoon 14th September 2013 is the next scheduled meeting date, to plan regular monthly meetings and field activities etc., (except on School and Public Holidays). U3A have now also kindly made available, their facilities and time slot for 'A Special Interest Fossicking & Prospecting Group' for the second Saturday of each month at times and venue locations to be advised, relative to the groups activity needs.

We are currently in the process of identifying valuable sources of suitable support and activity opportunities. We are seeking contact with associated businesses and equipment manufacturers to source interesting guest industry and experienced presenters address our group(s). We welcome any member/associate leads of suitable field activity opportunities and property owner contacts for investigation and consideration to include in our future field activity group(s) opportunities.

That's all for now.....We look forward with great enthusiasm to meeting and greeting interested folk.

Please advise your attendance, name & numbers etc for Saturday 10th of August for venue preparation and provision.

Phone, email or write to reach the addressees listed below, by last mail Monday 5th August 2013.

Email private...Kevin Winters..popwinters@netspace.net.au. MBL..0407203075

Email private..Brian & Pat Spilsbury....briana@en.com.au....mbl..0418234766.

Email U3A office.....info@goulburn-mulwarre.u3anet.org.au... 0248225186 or Mail to..U3A-P.O. Box 677, Goulburn, NSW, Australia, 2580.

Cheers and regards to all.....Kevin Winters & Brian Spilsbury.

FIFE'S STOCK FEEDS



Round Bales
Pasture Hay
Square 8x3x2
Lucerne Hay
Rye & Clover



Also suppliers of Bird Seed, Dog Food, Cat Food,
Wheaten Chaff, Oaten Chaff, Stud Mix

51-52 Knox St Goulburn
(02) 4822 3111

New to the Area is a fully
qualified & licensed Carpenter

Specialising & covering all
aspects of Carpentry work

Decks, pergolas, small
renovations, any odd jobs,
handy man work,
property maintenance, gardening,
with many other services available.

WINDELLAMA
CARPENTRY &
HANDYMAN SERVICES

James Walsh
64 Charles Road,
Windellama 2580
0447520173
48445940

ABN: 90 656 821 885



NO JOB TOO SMALL WITH FAMILY FRIENDLY PRICES.

Email: windellamacarpentry@yahoo.com.au

For a no obligation quote or discussion,
and a prompt, reliable service, please give me a call.

JAMES WALSH

4844 5940

0447 520 173

Goulburn Mulwaree Council appoints new Heritage Advisor



Heritage consultant Louise Thom says Goulburn Mulwaree is a great place to be doing her job because it is such a “rich heritage environment” with an amazing array of intact heritage buildings.

She has just been appointed as Council’s new Heritage Advisor.

Ms Thom said her new role at the Council includes providing people with advice regarding the maintenance and development of heritage properties and properties within the Conservation Areas.

She also provides advice to Council’s Strategic Planning Unit on policy, such as the Development Control Plan and Local Environment Plan, as well as reviewing Heritage Studies.

She said Goulburn has a remarkable amount of heritage.

“Goulburn is a highly intact city from a heritage point of view,” Ms Thom said.

“It is a very rich heritage environment – everywhere you turn you see a wonderful heritage building. Most of these buildings are on the Local Heritage schedule or in a conservation area.

The city also includes heritage items that are on the State Heritage Register, such as the two cathedrals –St Saviours and Saint Peter and Pauls.

“Heritage applies not just to a building, it can also apply to an area such as the larger conservation area of the CBD,” she said.

(Continued on page 28)

(Continued from page 27)

Ms Thom's background is in architecture and she has been involved in heritage planning for the past 20 years.

She was the Heritage Officer at Wollongong City Council for over 10 years. In 2004, she became a private heritage consultant. Ms Thom has been appointed as Council's new Heritage Advisor for 2013/14 with a possible extension subject to continued grant funding until June 30, 2016.

Ms Thom will be in Goulburn Mulwaree Council on the second Monday of every month. People can make appointments to see her by contacting the Council.

Goulburn Mulwaree Principal Strategic Planner Wesley Folitarik welcomed Louise's appointment, saying the Heritage Advisor Service is part of Council's Heritage Program and is part funded by NSW Heritage Office. He said Council's Heritage Advisor could recommend suitable conservation methods and give other advice and that this is a free service provided by the Council.

With the arrival of Ms Thom, Mr Folitarik was also keen to promote the Council's Heritage Grants Program, which are now open and which provide support to property owners to undertake work to conserve local heritage items.

"Council has traditionally offered six grants of \$2500 totalling \$15,000. Under the funding agreement Council is reimbursed \$5000 from the Heritage Office," Mr Folitarik said.

He said the Heritage Grant Program was partly funded by the Department of Planning and Infrastructure (Heritage Office) and that in 2012/13, Council offered grants totalling \$25,000 specifically for the painting of buildings in Auburn Street.

"The objective of targeting Auburn Street was to improve the appearance of the main street in time for Goulburn's 150th Anniversary celebrations. Under the funding agreement Council was reimbursed \$8,500 from the Heritage Office," he said.

Now that the 150th Anniversary celebrations have past, he said Council wanted to revert to a grant scheme that considered applications from the whole Local Government Area.

"At the July 2 Ordinary Planning Meeting, Council recommended to maintain its current financial commitment and again offer up to \$25,000 in grant funding in two grants of \$5000 and six grants of \$2500," he said.

"Grants are offered to owners on a dollar for dollar basis. In many cases the applicant contributes funds to the project greater than the grant amount."

Mr Folitarik said up to \$50,000 would be spent directly on local heritage conservation initiatives as a result of the grant program, with the money to be given to projects that protect local heritage, public places and amenity including protection of significant architecture, indigenous heritage and the natural environment.

"Past experience has been that landowners have contributed more than the minimum \$1 contribution for every \$1 received under the grant program," he said.

Mr Folitarik said guidelines to apply for the Local Heritage Fund were now available from Council by contacting Jack Miller or Jeff Bretag on 4823 4444.



Prepare your garden beds for Spring flowers and vegetables- dig in old compost or animal manure, plus blood and bone and a handful of lime per metre.

VEGETABLES TO SOW

Seeds; Carrots, parsnips, lettuce, silver beet, onions, peas.

Asparagus and rhubarb crowns.

Plants: Cabbages, lettuce, silver beet, onions.

FLOWERS

Seeds: of petunias and phlox.

Seedlings;- Pansy, viola, stocks, snapdragons, aquileia, carnations, dianthus, primula, dwarf William, alyssum, poppies, larkspur.

Prune your roses now and spray with Lime Sulphur or Bordeaux.

Prune your Fruit tree and spray no later than the pinking of the buds for nectarine and peaches, spray with Lime Sulphur or Bordeaux.

Spray Apples, pears, plum, quinces and your roses with Winter oil, this control mite and scale.

Good ground covers, that are hardy and give good show of flowers in spring are;-

Ajuga;- Also known as carpetweed or bugleweed, ajuga forms dense foliage that's great for keeping weeds at bay. The cool-coloured leaves give rise to deep-blue flowers spikes in spring and summer. It grows to 15cm and spreads to 40cm. Plant in slightly damp, shady areas and close together, so they intertwine as they grow.

Gazania;- These colourful flowers burst onto the scene during the warmer months, held above a carpet of silver-green foliage. They'll grow up to 10cm high and spread to about 50cm. Plant so they tumble over banks, or mass plant in sun-drenched beds. They grow well in sandy soil.

Catmint;- This attractive herbaceous perennial bursts with dainty sprays of lavender-blue

flowers in spring and summer, and will spread generously. Catmint dies down in autumn, so it can be grown in frost-prone areas. Plant at the front of a boarder, or position to edge paths or rock gardens. Grow in full sun and well drained soil.



Serbian bellflower;- Covered in a profusion of pretty lavender-blue blooms from mid-spring, the Serbian bellflower (*Campanula poscharskyana*) fits into any garden setting where a carpet is needed. It's a rampant spreader, mounding to around 20cm high, with a indefinite spread. Trail over banks in area of filtered shade or grow at the front of mixed borders, in well-drained soil.

Lambs' ear;- Popular for its soft foliage, lambs' ear makes an attractive groundcover, particularly when paired with Mediterranean-style planting like lavender and rosemary. Growing to a height of 30cm-45cm with a spread of 60cm, thick spikes of pink-purple flowers appear from late spring. It loves hot, dry heat, so plant in well-drained soil, exposed areas such as dry sunny borders, or in a gravel garden. Once established, the plants are reasonable drought-tolerant.



GOLDSMITH STREET SURGERY

Call 4821 7445

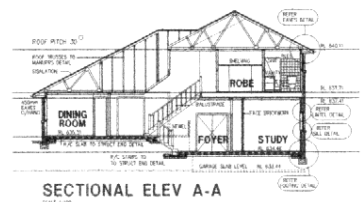
**Same day
appointments available**

We are open
MONDAY-FRIDAY
9am to 5pm
SATURDAY
10am to 2pm

ACOM DESIGN

PO Box 806,
Goulburn 2580

Yarralla,
Oallen Ford Rd
Bungonia 2580



Robert C Everingham

Building Designer & Draftsman

New Homes, Alterations & Additions
Duplex, Villa, Townhouse Developments
Rural, Commercial, Industrial Buildings
Free Quotes - Competitive Rates - Prompt Service
Energy Efficient (SEDA), Eng Dwgs: Mech, Struct, HVAC

TEL 4844 4321

MOBILE 0417 682 022

FAX 4844 4323

EMAIL acomdesign@bigpond.com.au



MEMBER
STANDARDS AUSTRALIA



MEMBER
BUILDING
DESIGNERS
ASSOCIATION
OF NEW SOUTH WALES INCORP

*Oallens
Mobile Mechanic*



Rob Hutchison

Ph: 02 4844 5727
Mob: 0401 078 483

- **All mechanical repairs**
- **Breakdown service available**
- **Travel to you**
- **Motor re-builds**
- **New car services**
- **Stationary engine repairs**
- **Clutches, brakes**
- **Tractor repairs & re-builds**

4844 5727

BOB RUDD FUNERALS



**73 Reynolds Street
Goulburn NSW 2580**

Phone 4822 4400

**Your Local Family Owned
Funeral Directors**



David Rudd & his sister Shane

**WE WORK HARD TO GAIN YOUR
CONFIDENCE & TRUST**

Introducing our New Chapel with on sight parking
Pre-paid funerals available as well as pre-arranged funerals.

Just ring and we will come to you

Servicing Windellama, Goulburn, Mulwaree Shire, Marulan,
Gundaroo, Braidwood, Gunning, Dalton, Tallong, Bungonia,
Taralga, Yass, Braidwood

Monumental work - Just ring us for a quote

We welcome your enquiries.

**** SUREPLAN as little as a \$1 a week Funeral Fund****

Contact our office

4822 4400

Road Maintenance Work Carried Out in 2012-13 Year

| | | |
|--|--|-----------|
| Windellama Road | <ul style="list-style-type: none"> • Heavy Patching of road Pavement • New Guide Posts | \$220,000 |
| Windellama & Oallen Ford Road Intersection | <ul style="list-style-type: none"> • Rehabilitation of Intersection • New Drainage • New Guide Posts | \$120,000 |
| Oallen Ford Road | <ul style="list-style-type: none"> • Road Realignment • 1.1km road Sealing • New Guard Rail • New Guide Posts • 1.1km Road Side Vegetation Clearing | \$300,000 |

Total Expenditure \$640,000

Programmed Capital Works & Maintenance for 2013/14

| | | |
|--------------------------------|---|-----------|
| Oallen Ford Road | <ul style="list-style-type: none"> • Realignment & Construction | \$311,000 |
| Oallen Ford Bridge Replacement | <ul style="list-style-type: none"> • Purchase of Structure with first half of State Gov grant - \$1.1M. Construction in 2014-15 with second half of grant \$1.1M | \$1.1M |
| Windellama Road | <ul style="list-style-type: none"> • Bridge Replacement | \$290,000 |
| Windellama Village | <ul style="list-style-type: none"> • Ongoing Roadside Vegetation • Ongoing installation of Guide Posts & Signs | |

Total Expenditure \$1,701,000



Windellama & Oallen Ford Road Intersection



Oallen Ford Road

2013-14 Recurrent Expenditure - Rural Areas across Goulburn Mulwaree

- Rural Road Maintenance - \$881,000
- Bridge Maintenance - \$100,000
- RFS Contribution - \$260,000 (distributed by State Government)
- Rural Road Rehabilitation - \$Nil
- Rural Road Resealing - \$Nil
- Gravel Resheeting - \$200,000
- Minor roadside vegetation clearing - \$166,000



Contact details

If you wish to go on Council's mailing list for information regarding future Outreach Meetings, please complete this slip, tear it off and place in the box on the table.

Name _____

Email _____

Mailing address _____

Phone number _____



Concrete4Goulburn supporting the Goulburn and District Breast Cancer Support Group

For every cubic metre the Pink Truck delivers to you Concrete4Goulburn contributes one dollar to the Goulburn and District Breast Cancer Support Group.



Concrete4Goulburn also have a Mini Mix Service, Concrete Colouring and Eco-mix concrete (made from recycled products).

Concrete4Goulburn is committed to providing high quality products and services at competitive prices to all their customers.

Concrete4Goulburn uses local products and people and a state of the art batching plant to get high quality concrete to you for:

- House and shed slabs
- Causeways
- Footings
- Postholes
- Retaining Walls
- Driveways
- Kerbs

02 4822 0000



8 Copford Road Goulburn
www.c4g.com.au

CHURCH INFO

Catholic Church Services

Parish Priest: Fr. Dermot McDermott
Assistant: Fr. Sijo Jose

Presbytery & Parish Office
Phone 4821 1022

Sunday Mass will be at 8am on the 2nd & 4th
Sunday at St. Patrick's **Marulan**.

Mass Times in **Goulburn** are:

Saturday Vigil Mass:

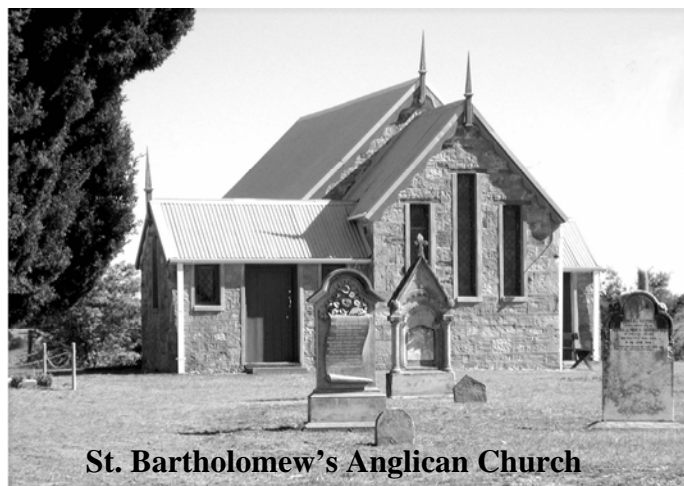
5pm (DST) at St. Peter & St. Paul's
Sunday: 7am. at Our Lady of Fatima,
Nth. Goulburn

Sunday: 10am. at St. Peter & St. Paul's

St. Joseph's Church, Tarago

3rd Sunday of the Month

Enquiries: 4821 1022



St. Bartholomew's Anglican Church

CHURCH SERVICES

**PLEASE NOTE THAT ALL SERVICES WILL BE
HELD AT ST. BARTHOLOMEW'S
WINDELLAMA DURING THE WINTER
MONTHS**

August

St. Bartholomew's – Windellama

Sunday 11th -11.30am

St. Bartholomew's – Windellama

Sunday 25th - 11 30am

September

St. Bartholomew's – Windellama

Sunday 8th – 11.30am

St. Bartholomew's – Windellama

Sunday 22nd - 11 30am

The Reverend Vanessa Bennett can be
contacted on landline 4821 3631 or mobile
0417 699 700 or by email on
wgbnanglican@bigpond.com

St. Andrews (Anglican) - Tarago

2nd Sunday 9am

St. John's - Lake Bathurst

4th Sunday 9am

NERRIGA

ANGLICAN CHURCH SERVICES

Held at Nerriga Church

2nd Sunday each month at 2pm

(Except Easter & Christmas)

All Welcome

Rainfall Stats

16th June to 15th July



Rosewood, Windellama Road, Windellama

106 ml / 7 days

Gar-Den, Oallen Ford Rd, Oallen

131.5 ml 9 days

Johnno's Store, Oallen Ford Rd, Bungonia

109 ml / 8 days

Tarkierelea, Fernleigh Close, Windellama

119 ml / 6 days

Willy Weather

ml / days

1st-** July

Corrang Cottage

300 ml

Disposing of rural waste

As our rural residents are aware, Council issues an annual Rural Waste Card that allows you to dispose of household waste at our local Waste Management Centres. The cards have 52 holes that are punched out when used, which means you can use the service when required. It is important to remember that limits do apply and larger loads (such as a small ute or car with a heaped load) will require two holes to be punched. A one tonne ute with a heaped load, or trailer larger than 1.8m x 1.2m will require three holes to be punched. A bulky waste service is also allowed for, with the card enabling rural residents to dispose of up to two cubic metres of waste on either the weekend of 8 /9 or 15/16 September.

If you need to dispose of more waste than allowed for with the rural waste card, standard charges will apply. Recycling facilities are available at landfills so please help the environment and sort your waste whenever possible.

Please see new Tarago Tip charges on page 38



MICK'S MULTI TRADES

ABN: 90 178 544 738

Multi Skilled Tradesman

Windellama NSW

Lic # MVTC 126573

Mob: 0413 059 587

Email: micksmultitrades@gmail.com

PROUDLY SUPPORTING THE COMMUNITY OF WINDELLAMA IS MICK,
A MULTI SKILLED TRADESMAN, A DIESEL MECHANIC BY TRADE,
ALSO
AN EXPERIENCED HANDYMAN, GENERAL LABOURER,
PLANT OPERATOR AND TRUCK DRIVER.

I HAVE ALWAYS LOOKED AFTER THE LOCALS, AND CAN TURN A
HAND TO ANY JOB SO SHOOT ME AN EMAIL OR PHONE ANYTIME,
YOU'LL BE PLEASANTLY SURPRISED AT MY DOWN TO EARTH RATES.

Well June has been a wet month with over 100 mls here . All the alpacas were in their various shelters for three nights when the rain was heavy and believe me they enjoyed that. The rain has been good and the creek has flowed through to make Lake George a little fuller.



The dogs are well and Monty (Labrador) will be one year old on the 10th of this month. He is a good puppy and has never been a problem but I think it is because he is not left on his own and is well entertained. He will be starting lead lessons soon, as he already knows basic commands.

The Alpacas had split lupin added to their mix at the beginning of June as they needed warmer tummies. They have all been very healthy.

I am sure you have all heard by now that I am fighting against

people eating alpaca meat, probably the only soul to be doing just that !!! I have been doing this since the early 2000's. I cannot think for the life of me why we need more meat to eat when no one here is starving!!! Especially Alpaca when they are so gentle and sentient and have such a gorgeous soft fleece (to die for) and make such good guards for all other livestock. It has me baffled!!! I think sadly it is just human greed for money and to say one has eaten "gourmet" meat. Where are we heading !!! I think we have enough animal cruelty already, without more being carried out.

If anyone is interested I have two on line petitions about this going ahead, with many signatures, even many from overseas where people are appalled. I cannot bear the thought of these gorgeous creatures going to the abattoir, it is barbaric.



Namaste Joy AA Alpaca Caregiver.

Classified Advertisements

All personal classifieds are FREE & also included in the Tarago Times

We run your advert until you let us know
when you have sold it or gained it

GENERAL FOR SALE

Camp Bed, folding, single with mattress. Good condition. Ph 4844 5001

Pine TV & display unit with 23" analogue TV & digital box. \$250 for the lot. Ph 4849 4371

Parrot Cage on stand, good cond. \$150 ONO. Ph 0429 006 745

410 Shotgun, near new with some ammunition. \$340 ONO. Ph 4845 9147, after 6PM, PFT.

Cocky's Cage 190cm high, 150cm wide, 65cm depth \$100.00 Ph 4844 5287

Outdoor camp shower, canvas bucket, 20 Ltr capacity \$10 Phone Bob 4844 5001.

Firewood - Split, seasoned. Ute load - approx. one tonne. Local delivery - \$150 per load. Ring Greg - 4844 5157

Firewood - \$150 per load, includes delivery. Ph 4849 4520

Teak entertainment unit, with two glass door display. 6x4 foot. \$75.00 ONO.

Double bunks, Metal, with ladder, new innerspring mattresses. \$125.00 ONO

Two wooden bed side tables with cane draws. \$50.00 for two. Ph 48 494480.

Garage Sale

Garage Sale Sat 10TH & Sun 11TH August of items Collectables Bric a Brac 1080 Cullulla Rd Tarago Gates Open at 8.00 am

RURAL RELATED FOR SALE

Duncan Direct Drill, 20 tyne. Good order. \$3,500. Ph 4844 6250

Stockcrate 1.8 x1.8 x1.2 galvanised 40 x 40mm, Good for sheep or calves, sliding rear roller door VGC -\$500 o.n.o. Ph 0412 421 464

Tractor - David Brown 880, 4 cylinder diesel, ROPS. Needs work. \$1,200 Ph 4844 5329

WANTED

Farm Contractor with tractor (only) to deep rip tree lines. Needs to be able to pull a 3 shank Yeomans Plough. 60-100hp required. Location is 2 km from Lumley Rd turn off, on Mayfield Rd. Please call Nick Huggins 0417 010 956

Pekin ducks One or two female as company for my existing 2 year old female. Ph Pam 4844 5180

Knitting wool for volunteer knitters for charity. Any leftover wool, any ply, gratefully accepted. Ph Denise 4844 5087

Yeoman Plough 3 tyne 3PL. & **Ripper** 3PL Chisel single tyne & **Rotary Aerator**. Ph 4844 7129 or 0418 223 617

Classified Advertisements

All personal classifieds are FREE & also included in the Tarago Times

**We run your advert until you let us know
when you have sold it or gained it**

ANIMALS FOR SALE

Belted Galloway Bull for sale, Registered with certificate, 3 years old, black & white, docile, Windellama area \$1500. Call John 0411 349 555.

Puppy, bully stag, male, white, vac., micro-chipped, 10 weeks. \$400 ONO Ph 0429 006 745

Piglets - different ages so different prices. Ph Bob McDonald 0429 494 331

Black and white bull 1 year old, \$500, Black and white steer 1 year old, \$400, Please phone after 7pm weekdays, Terri 0413 241 356, Paul 0403 065 875

Young **ducklings** - Buff Orpington/Peking cross - \$12 each

Quarrians - greys, and Pearls - \$15 each. Ph 4845 9147 after 6PM.

Geese for sale. \$25 each. Ph 4844 5906

Working Bull Murray Grey, \$950.00 ONO. Ph. 0414616960

Alpacas - lots of different colours and ages. From \$250 each Phone Jacki 0428 298 157 Boxers Creek

Highland cattle - 5 cows with 5 dexter x calves. \$3,700 the lot. Ph Cathy 4844 5455

Roosters Many breeds, some are free, some are \$5.00. Full size and bantams; some hens for sale. PH 48445040

FOR LEASE

Belted Galloway Bulls for lease, Black & white and Red & white, 4 years old. Both registered with certificates. Call John on 0411 349 555.

CARS, BIKES, TRAILERS, etc. FOR SALE

Toyota truck, 1988, good working order, with 13ft steel tray & stock crate. Ph 4829 5123

Transalloy Ute Tray 1.8 x 1.8, suit most 4x4's, complete with dropsides and LED lights VGC -\$1100 o.n.o. Ph 0412 421 464

Polished Alloy Rear Ute Sports Bar \$100 Ph 0412 421 464

Aluminium Savage 4.3m Boat (1995) with 30hp Yamaha outboard on brooker trailer. Front steering & canopy, electric start, radio, compass, plus all extras. Always garaged & flushed, runs well. \$5,900 ONO Call Scott 0418 563 888

Mitsubishi Exec. Station Wagon with new motor in 2007. . Offers over \$500 considered. Ph Maria 4844 5106

Coming Events...

September

20th School Term 3 ends

28th RFS Open Day

October

8th School Term 4

12th Blues Bros. Revival @ Tarago

Our Advertising Charges

| | | |
|--|--------------|------------------------------|
| Classifieds - Personal (maximum 2 lines) | FREE | |
| | Month | Year (11 issues) |
| Small advertisement (business card size) | \$ 6.50 | \$ 65.00 |
| Quarter page advertisement | \$12.00 | \$120.00 |
| Half page advertisement | \$25.00 | \$250.00 |
| Full page advertisement | \$50.00 | \$500.00 |
| Double page discount | \$90.00 | |
| Inserts - \$40.00 for 400 inserts into hard copies | | |
| Typesetting of adverts: \$50 | | |

PAYMENT:

Cheques: payable to *Windellama News*
PO Box 705, Goulburn. 2580

Direct Deposit or EFT: IMB Ltd; BSB 641.800;
A/c 200045794 with Name & advert as detail

*** Unpaid adverts will be cancelled
after one month**

*** All advertising copy must be
accompanied with payment**

All advertising enquiries to Denise Johnson

Fees for Hire of Hall or Supper Room at Windellama Hall

| | | |
|--------------|-------------------------|--------------|
| *HALL | ALL DAY | \$200 |
| | DAY 4hrs or less | \$100 |
| | EVENING/NIGHT** | \$200 |

*Includes Supper Room & Kitchen

** \$2 per hour for heating

SUPPER ROOM (Includes Kitchen)

| | |
|-------------------------|--------------|
| ALL DAY | \$80 |
| DAY 4hrs or less | \$40 |
| EVENING/ NIGHT | \$100 |

Use of the premises prior to your booked
function will incur a surcharge of
Supper Room Fee

**To Book please ring W. P. A. Secretary,
Frances Knights on 4844 5157**

TARAGO TRANSFER UPDATE & DRUM MUSTER STATION

**Open Friday to Monday
8.00am—4.45pm.**

**Card required for household waste,
or fees apply.**

Free recycling of the following:
Plastics, tins, oil, batteries, glass,
paper and cardboard.

**Free recycling also of Drum Muster
Chemical Drums providing they are
empty, triple washed and have the lids
removed**

Tipping Fees for Tarago

Sorted Waste - Domestic Residents only

| | |
|---|----------|
| Car, station wagon, small ute or small trailer | \$ 16.00 |
| Medium trailer, large ute or 1-tonne truck load | \$ 21.00 |
| Large trailer load | \$ 33.00 |

Unsorted Waste and Non-Residents Waste

| | |
|--|-----------|
| Garbage & trade waste (uncompacted, per cubic metre) | \$ 78.00 |
| Garbage and trade waste (compacted, per cubic metre) | \$ 133.00 |
| Other unsorted waste— 2 x sorted rate per category | |
| Hard fill demolition waste not accepted at Tarago | |

Animals — Note: *Animal carcasses cannot be
dumped at Tarago as there are no facilities for burial
please refer to Goulburn Mulwaree Council for details
on availability in this area.*

| | |
|---------------------------------|----------|
| Car Bodies | \$ 56.00 |
| Tyres — | |
| Car Tyres (each) - per tyre | \$ 11.00 |
| Motorcycle tyres (each) | \$ 9.00 |
| Truck tyres (each) - per tyre | \$ 26.00 |
| Tractor tyres (each) - per tyre | \$ 95.00 |

COMMUNITY INFORMATION

Windellama Progress Association

Lloyd Turner (President) 4844 5214
Frances Knights (Secretary) 4844 5157

Windellama Rural Fire Brigade

Rex Hockey (Captain) 4844 5147
Graham Kinder (President) 4844 5330
Ellen Sylvester (Secretary) 4844 5407

Windellama Field Day Committee

Heather Caulfield (Secretary) 4844 5120
Frances Knights (Treasurer) 4844 5157

Windellama News

Denise Johnson (Editor) 4844 5087
Gayle Stanton (Editor) 4844 5156

Windellama Garden Cub Inc.

Pam Williams (Secretary/Treasurer) 4844 5194

Windellama Hall Country Markets

Bob Shaw 4844 5001

Windellama Historical Society

Rex Hockey (President) 4844 5147
Julian Woods (Secretary) 4844 5270

Windellama Landcare

Warren Yates (President) 4844 5350
Sandra Greville (Secretary) 4844 5047

Windellama CFR

Kevin Muffet 4844 7143

Windellama School P&C

Shelly Andrews (President) 4844 5630
Heather Caulfield (Secretary) 4844 5120

Willow Glen Gardeners

Warren Yates 4844 5350

Wires (wildlife rescue)

Marian Pearce 4844 5244
Southern Tablelands WIRES 4822 3888

Tarago Pony Club

4844 7014

Justice of the Peace

Linda Shannon 0429 980 141
Geoff Burns 4849 4330

FOR ALL EMERGENCIES
eg. FIRES / ACCIDENTS

PHONE 000



For Mobile users & Landlines



Important Phone Numbers

Rural Fire Brigades



| | | |
|----------------------|--------------|--------------|
| Windellama | Rex Hockey | 4844 5147 |
| Tarago | Ken Vassel | 4849 4652 |
| Taylor's Creek | Dave Elward | 4849 4240 |
| Mt Fairy/Boro | Mike Welford | 4849 4623 |
| Bungonia | Craig White | 0407 718607 |
| Gundary | Jason Gray | 4822 2903 |
| Nerriga | John Rolfe | 4845 9160 |
| Bushfire Information | | 1800 059 333 |

www.windellamarfs.com.au or www.rfs.nsw.gov.au

WINDELLAMA PH: 4844 5359 or

CHANNEL 21/209 Base

AMBULANCE



Ambulance Booking
Goulburn Ambo Station

000

13 12 33
4827 0444

Windellama CFR First Aid

Ambulance on triple zero

| | |
|------------------------|-----------|
| Kevin Muffet | 4844 7143 |
| SES | 13 25 00 |
| Poison Info. Service | 13 11 26 |
| Goulburn Base Hospital | 4827 3111 |



Police

Tarago Station -

| | |
|---------------------------|-----------|
| Snr. Constable Brad Carey | 4849 4411 |
| Goulburn | 4824 0799 |

Other

| | |
|--|--------------|
| Goulburn Railway Station | 4828 5816 |
| Train info & bookings | 13 22 32 |
| www.countrylink.info | |
| Country Energy - interruptions | 13 20 80 |
| Lifeline | 13 11 14 |
| Kids Helpline | 1800 551 800 |

August 2013

| MON | TUE | WED | THU | FRI | SAT | SUN |
|--|----------------------------------|----------------------------|---------------------------|-----|--|--|
| | | | 1 School Playgroup | 2 | 3 CanAssist Fundraiser Historical Society Excursion | 4 |
| 5 P&C Meeting Bank Holiday | 6 Willow Glen Gardeners | 7 | 8 School Playgroup | 9 | 10 Nerriga Progress AGM Maplesville Excursion | 11 St. Bart's |
| 12 | 13 | 14 | 15 School Playgroup | 16 | 17 | 18 Windellama Hall Country Markets |
| 19 Progress Meeting | 20 | 21 Nerriga Gardeners | 22 School Playgroup | 23 | 24 Fire Brigade Training & Meeting | 25 St. Bart's |
| 26 | 27 | 28 | 29 School Playgroup | 30 | 31 | |

For details of times and places - see articles inside this issue