

# THE WINDELLAMA NEWS



Windellama Progress Association Hall Inc.

Vol. 18 no. 7 – August 2014

Editorial & Layout: Lyn Jones & Gayle Stanton

Sec/Treas: Christine Woodcock

[www.windellama.com.au](http://www.windellama.com.au)

Published Monthly

Hard Copy Distribution 400 - Website : 6,000 average/month

Windellama, Oallen, Nerriga, Bungonia, Mayfield, Quialigo, Lake Bathurst, Bungendore & Tarago



Starting at  
10.00 am  
Saturday 9th  
August



## Windellama Hall

Hot lunch, soup, sausage  
sizzle, drinks,  
stalls, chocolate wheel, raffle  
and cake auction.

Come along and have a  
fun day



\* BURNING OFF? - Notification now required \*

Windellama Hall is your Neighborhood Safer Place

**Annual Subscriptions** - please send your details and **\$25** (cheques payable to 'Windellama News') to cover the annual cost of postage.

All cheques please post to:

**The Secretary, PO Box 705, Goulburn. 2580**

\* Unpaid subscriptions will be cancelled after one month

If you have any short articles, anecdotes, or something else interesting about yourself, your family, or the community; please write it down and drop it in our letterbox at the Hall. We will edit it and publish it in the Windellama News.

**A LOCKED POSTAL BOX IS AT THE FRONT OF THE HALL, 3444 OALLEN FORD RD, IN THE STONE WALL FOR THE COLLECTION OF ITEMS FOR PUBLICATION**

**Items left in the box after the deadline will not be collected or included in the News**

Articles, adverts, etc may also be sent by email to:

**[newswindellama@gmail.com](mailto:newswindellama@gmail.com)**

**Adverts sent by email will not be inserted unless payment is received by the deadline.**

#### **Our Policy on Receipts**

The Windellama News makes out a receipt for all advertising payments made to the paper. We don't post out receipts to save cost and we assume that the appearance of the advertisement in the paper could normally be taken as proof of payment.

If you require a posted receipt please include a stamped self-addressed envelope with your payment.

It would be greatly appreciated if anyone sending money to the Windellama News would include their name and address and a note saying what it was for and put it in a sealed envelope. This would avoid a lot of confusion and uncertainty .

#### **Notice to advertisers, article submitters & readers**

The Windellama News is published and authorised by the Windellama Progress Association Inc. Whilst every care has been taken in the production of the News & publishing to the web page on the community website, the editor takes no responsibility for any inaccuracies, errors or omissions. All such contributors by forwarding advertising, notices, & articles, agree to indemnify the publisher & warrant that the material is accurate & neither deceptive nor misleading, in breach of copyright, defamatory or in breach of any other laws & regulations.

The responsibility for advertisements complying with the Trade Practices Act lies with the person, company or agency submitting such for publication. Original material appearing in this newsletter is copyright. It may be reproduced in part or in whole for the benefit of the community, provided that the source of the material is fully acknowledged. If you have any queries about using material from the Windellama News, please contact the editor.

## **BUSINESS DIRECTORY**

Driveway supplies	Tradesmen
Builder	Markets
Electrician	Winery
Entertainment	Engineering
Glass	Soap
Handyman Services	Septic Services
Health	Bitumen / Concrete
Home supplies	Shed Supplies
Home Services	Heating / BBQ's
Mechanic	Bikes & buggies
Nursery	Playgroup
Office supplies	Cattle / sheep
Piano	Excavation
Plumber	Contractors
Personal Trainer	Solar supplies
Rural equipment	Funeral services

## **Inside this Issue.....**

*****	5
SES	7
Community Outreach Meetings	9
Landcare & Garden Club	11
Nerriga News	13
Historical Soc	15
Oallen Ford Bridge Works	17
Windellama RFS	19
Historical Society	21
Willowglen Gardener	23
Local Items	25
School News	27
Gardening Tips	29
Church Info	31
Classifieds	32-33
Community Information	34-36

**DEADLINE FOR ALL ISSUES IS THE 20TH OF THE PRECEEDING MONTH**

**YOUR WINDELLAMA NEWS IS PRINTED BY BUSINESS REQUISITES, GOULBURN**

# Community Notice Board

Vale Paula Vanslambrouk—  
VANSLAMBROUCK (nee Klumpp), Paula.  
12.1.22 - 9.7.2014

Loving wife of Julien. Much loved mother and mother-in-law of Adrian and Yolanda, Kerry and Colin loved by her grandchildren and great grand children.

Paula is fondly remembered as one of the original team that started the Windellama Newsletter . She will be greatly missed.



Paula was one of nine children born in the 1920's and the family struggled during the depression years.

Her ancestors had settled in the Wauchope district and this is where she was brought up.

Her husband Julien came from war torn Belgium in the 1950's to Australia not knowing the language and determined to enjoy the adventure of coming to another country.

A few years later he travelled to New Guinea and meets Paula and they fell in love, thus beginning a happy marriage, full of challenges in this strange country and then in South Africa. Julien rises to a top job with Kellogg's and they travel the world.

Paula and Julien settled in retirement in the Goulburn district on a property at Bungonia/ Windellama. Julien joined many associations and gave freely of his time to many organisations earning him in 2001 the Premier's Award for outstanding service to the community.

Paula started up the Windellama News and joined the Miles Franklin writing group . As a result, the idea for writing her memoir was encouraged.

In 2010 her autobiography Challenging Lives was published to acclaim.

## Coming Events...

### August

- 9 Can Assist fundraiser
- 9 Nerriga Progress AGM
- 17 Windellama Country Market
- 18 Windellama Progress Meeting
- 24 Bishop Robinson at St Bartholomew's 155 year anniversary

### September

- 21 Windellama Country Market
- 27 Windellama RFS Open Day

- 27 Bargains in the bush @ Nerriga

### October

- 19 Windellama Country Market

### November

- 1 Field Day



# WINDELLAMA PLAYGROUP

at

Windellama Public School

Each Thursday

9.30am – 11.30am

**BYO snacks - tea & coffee supplied**

**Qualified art teacher visiting each fortnight**

**Bring your bubs & toddlers for a fun morning**

**Music, stories, sand-play, free-play, art, craft.**

## FREE!

**For more info ring Tony at the school on - 4844 5130**

**(NO PLAYGROUP IN SCHOOL HOLIDAYS)**



JCF Contractors are the specialist team to ensure your project has the manpower to complete all your key projects on time, to budget and at the highest level of quality.

No matter what your project, JCF can assist you in:

- Earthmoving
- Road Works
- Driveways
- Site Works
- Arenas
- Demolition
- Footings & Piers
- House Excavation
- Shed Sites
- Rubbish Removal
- Septics
- Landscaping
- Trenching

**Call Jon today for your FREE quote**

**0428 624 966**

Goulburn and surrounding areas



# Community Notice Board

## Windellama Community Outreach Meeting

Goulburn Mulwaree Council, in conjunction with Medicare Local, hosted its first Community Outreach Meeting for 2014 on Tuesday, July 22 at the Windellama Hall at 6.30pm.

Community Outreach Meetings provide an opportunity for community members to meet and discuss Council related issues with Goulburn Mulwaree Councillors and senior staff. They also bring rural health matters to the attention of the Medicare Local Goulburn Branch.

Discussions included the opportunity for village residents to identify potential projects for funding from the newly created Villages Plan Reserve.

Six additional Outreach Meetings will be held in the coming months as scheduled below:

12 August 2014  
Marulan (Marulan Hall)

26 August 2014  
Parkesbourne (Parkesbourne Uniting Church Hall)

9 September 2014  
Tarago / Lake Bathurst (Tarago Town Hall)  
23 September 2014  
Towrang (Towrang Community Hall)

14 October 2014  
Goulburn (Council Chambers)

11 November 2014  
Tallong (Tallong Memorial Hall)

25 November 2014  
Bungonia (Bungonia Community Hall)



### Change to Important Phone Numbers

Update your list of important phone numbers

**Bush Fire information.**

**1800 NSW RFS**

or

**1800 679 737**

Check page 35 for other useful phone and emergency contact information.



# Countrywide Shower Screens



## Shower Screens

• Frameless • Semi-framed • Framed

## Mirrors

• Bevelled • Polished

**Mick Greenwood**

**0448 494 220**

Fax: (02) 4849 4220

E: [countrywideshowerscreens@bigpond.com](mailto:countrywideshowerscreens@bigpond.com)

**Free Measure and Quote**

## Lowline Cattle

Quite, easy to handle stock - smaller size means easier handling, less stress on fencing & less soil compaction!



LOWLINE

Great for first time cattle owners & for introducing children to cattle

## Heard of Wiltipoll Sheep?

Wiltipoll sheep don't need shearing they shed their wool, are very hardy, don't crawl or wander, & produce fantastic fat lambs!



**WILTIPOLL**  
THE LESS WORK PRIME LAMB BREED

## Windellama Downs

Producing quality, Australian breed cattle & sheep suitable for any size rural holding

### Stock for sale

Commercial or registered stud stock  
Mob: 0416 047 488 Ph: 4844 5175  
Email: [windellamadowns@iinet.net.au](mailto:windellamadowns@iinet.net.au)



**GIO BUSINESS INSURANCE**

**GIO THE EXPERIENCED PROFESSIONALS**

RETAIL BUSINESSES CARPENTER ELECTRICIAN MECHANIC PLASTERER  
HAIRDRESSER BEAUTY SALON CHEMIST ACCOUNTANTS CAFES MOTELS  
RESTAURANTS TAKE A WAYS SANDWICH SHOP SMALL SUPERMARKETS HEALTH  
FOOD DELICATESSEN CABINET MAKERS KITCHEN MANUFACTURES AUTO  
ELECTRICIAN STRATA TITLE PROPERTIES ALL TRADES RETAIL SHOPS SOLE  
TRADERS MOBILE MECHANICS WHOLESALERS TRAVEL AGENTS NEWSAGENTS  
COMMERCIAL BUILDING PROPERTY OWNERS

- Deal direct with the insurer
  - Get personal service and flexible solutions for your business
  - Fast and easy claims lodgement process
- Pay by the month to assist with your cash flow

CONTACT :

**Thomas @ GIO COMMERCIAL INSURANCE DISTRIBUTION**  
**Mobile: 0408 641 879**

## Beware of the dangers of accepting contaminated landfill



Goulburn Mulwaree Council Environmental Officers have responded recently to several reports of the unlawful disposal of waste in the Local Government Area.

Goulburn Mulwaree General Manager Warwick Bennett said stiff penalties faced those who dumped contaminated fill. He said property owners should also be aware of the potential risks before they accepted fill onto their land.

"Penalties for unlawfully using a property as a waste facility can be up to \$1 million for a corporation and up to \$250,000 for individuals. On the spot fines of \$5000 may also be issued," Mr Bennett said.

"Such fill could be contaminated with asbestos or other materials, which could harm a property owner's health, permanently devalue a property, or leave the owners facing substantial clean-up costs."

Mr Bennett said that in many cases the potentially contaminated fill is advertised as topsoil or clean fill, making it attractive for landowners to accept onto their property.

He said while such earthworks could be exempt from Council approval, restrictions to this exemption still applied.

"Earthworks are potentially exempt from Council approval however there are restrictions/limits to the exemption. For imported fill to be exempt it must be 'free of building and other demolition waste and only contain virgin excavated material', which is defined in legislation," he said.

Property owners can take several steps to minimise the risks associated with contaminated fill including:

- \*Checking if filling is permitted in the area and whether approvals are required
- \*Checking the credentials of anyone who offers you cheap or free fill
- \*Never accepting fill from unknown sources, and
- \*Supervising all loads coming onto the property.

"Property owners should ask the transport operators for receipts detailing the origin of the fill and keep copies of all of the documentation. If you are in doubt

## Windellama SES First Aid & CFR

Our Team has had far distances to travel for CFR duties this past month encompassing Nerriga to Ravenswood area on Bullamalita Lane.

All will see that it takes dedication from those who are part of our very small "team" to assist people who are in need of medical intervention, for whatever may be the cause.

Fortunately for us, there are some keen new members who are putting themselves on the path to become CFR members.

May I add that this path has no steep slopes to negotiate, it is in fact, a gentle upward slope until the learning stops.

We are now a stand alone unit. Bob Bell, our Goulburn LHQ controller will be visiting our Windellama Unit on Monday evening of 21st July, the purpose of this visit is to introduce the person who is to be our Local Unit Controller. Applications for other positions will be asked for.

We will need at least 25 members. This will be an opportunity for people, who may wish to be trained as boat crews capable of undertaking the necessary training to become Flood Rescue proficient.

It is a course suitable for Male and Female, and it is something to feel proud about, when you become proficient.

Kevin Muffet

about anything please contact Council," Mr Bennett said.

Mr Bennett said that if community members had any concerns about illegal dumping or receiving contaminated landfill onto their property they should contact the Council by visiting the Council's Customer Service Centre, or by calling 4823 4444.

Council also has fact sheets on asbestos on its website, including where it may be found in a typical home, the health effects of asbestos, what asbestos is, how to dispose of it properly, and answers to other frequently asked questions.





# Donlin Dexter Stud

**"Keeping the Irish Tradition"**



## **Breeding the 'small acre mate'**

- House Cows
- Stud cattle
- Lawnmowers

## **Enhancing their docile natures:**

- Halter Trained
- Handled daily

***Naturally small, beefy little buggars***

**Over half our herd produce pure A2 milk**

## **DNA Tested for:**

- Parent Verification
- A2 Milk Protein
- PHA & BD1
- Colour (Including Dun)



**Contact: Lindsay and Donna**

**Bungendore, South East NSW. Ph: 0416 893 806**

**Email: [donlin.dexters@yahoo.com.au](mailto:donlin.dexters@yahoo.com.au)**

**Website: [www.donlindexters.com.au](http://www.donlindexters.com.au)**



# WINDELLAMA PROGRESS ASSOC. HALL Inc.

## Report from WINDELLAMA PROGRESS ASSOCIATION AGM

The Annual General Meeting was held on Saturday 12th July at 2 p.m. All positions on the executive and committee, in accordance with our constitution, were declared vacant and an election for these positions was held.

The new executive are:

President	Lloyd Turner
Vice President	Leanne Lourigan
Secretary	Christine Woodcock
Treasurer	Bob Shaw
Assistant Secretary/Treasurer	Irene Turner

Committee members are:

Grahame Woodcock  
Andrew McMillan  
Gary Lourigan  
Greg Knights  
Allan Chalman  
Graham Kinder

The meeting decided to create a new position of Maintenance Officer/Grounds Operations Director (abbreviated to G.O.D.). Greg Knights accepted nomination to this position.

Congratulations to all the new office bearers and we thank them for their support of the Progress Association.

Frances Knights was thanked for her years of service to the Progress in the role of Secretary and I know that I have some big shoes to fill!

Don't forget that the Windellama Community now has a FACEBOOK PAGE!

Like us at [www.facebook.com/windellamacommunity](http://www.facebook.com/windellamacommunity)

Our next meeting will be held on Monday 18th August at 2 p.m. All members of the community are welcome to attend our meetings.

Christine Woodcock - Secretary

### Craft @ Windellama Hall

There will be no craft at Windellama Hall in August because of the cold.

We will be back on Tuesday 9th September.

For more information call Irene 4844 5214

### Windellama Exercise Class

At Windellama Hall. Personal trainer attending. Mondays 9.30am-10.30am, all ages, men & women, preschoolers welcome to come along with parents. Conducted during school term.

For Info call Sally 4844 7154

Industrial • Commercial • Rural • Domestic  
Ph 4844 7088 INSTALLATIONS 0418 234 289

# ALLARD

ELECTRICAL CONTRACTING SERVICES  
SOLAR UTILITIES & ENERGY SERVICES  
GAS-OIL COMBUSTION SERVICES  
stevenallard@bigpond.com

#### ELECTRICAL LICENCES:

NSW Lic.No 198855C

NSW Lic.No 498875S

ACT Lic.No 2009576

QLD Lic.No C13290

#### ACCREDITATIONS

AUS C.E.C. Design & Install Grid Connect  
& Stand Alone Solar Systems #A3632173

ACT Type (B) Gas Appliance #200732

## RON WENBAN

### \*\* LOCAL ELECTRICIAN

\*\*

Rural \* Domestic \* Commercial

**PH: 0428 445 259**

Email: [ronwenban@skymesh.com.au](mailto:ronwenban@skymesh.com.au)

NSW LIC. #174303C

ACT LIC. #2008568



### Southern Districts Piano Service

Pianos • Pianolas • Tuning • Repairs  
Re-polishing • Removals

*Graham Price*

**02 4844 5329**



## CJ Solar

"Quality Systems that last"



Home, Business or Community  
Organisations

**Custom Designed To  
Meet Your Energy Needs**

- ◆ Stand Alone Systems
- ◆ OnGrid With Battery Backup
- ◆ Grid Connect
- ◆ Clean Energy Council Accredited

**Ph: 4849 4225**

[www.cjsolar.com.au](http://www.cjsolar.com.au)

PREVIOUSLY TRADING AS SUN POWER

LICENSED ELECTRICAL CONTRACTORS (241654C)

## Windellama Garden Club Inc.

Our members had a very interesting day out when we went to "Old Gundary" and view John Fife's collection of old wares. He gave a running commentary as we browsed. A cuppa afterwards and a chat completed the day.

Our Cancer fundraiser is getting closer and we are working to see it is a success again for the local | Assist. Anyone can donate a cake for our cake auction which is a highlight of the day.



Can

The date is 9 August and starts at 10 o'clock at the Hall. There will be a Chocolate Wheel, stalls, raffle, sausage sizzle and soup etc.

Please come along and help a worthy cause.

Pam Williams

### Who is Can Assist?

Can Assist is a grass roots, community based charity dedicated solely to supporting country people affected by cancer and their families.

Due to travel and accommodation expenses, it can easily cost a country family affected by cancer up to five times more than a city family just to access treatment. The reality is that many country mums and dads simply can't afford treatment, let alone the weeks spent away from their family and work.

There will be a fundraiser for this worthy charity on 9 August at the Windellama Hall at 10 am.

So come along and enjoy the festivities and support the Can Assist charity.



## Windellama Landcare



### THE WINDELLAMA LANDCARE GROUP

The Windellama Landcare Group is in the process of establishing even closer relationship to its umbrella group the Upper Shoalhaven Landcare Council (USLC) – so we can expect more activities in the next year.

### ACTIVITIES

There are no busy bees planned for this month – watch the Newsletter next month for news.

SO, IN THE MEANTIME, ARE YOU NEW TO WINDELLAMA? IF SO ...

If you are new to the area and are interested in joining Landcare you may be interested in joining us at one of our busy bees to see the kind of work we do. Call John Pearce (02 4844 5244) or Sandra Greville (02 4844 5947) for more information. Annual membership of Windellama Landcare is \$5.00 per family. CHILDREN ARE ALWAYS VERY WELCOME.

### WILD WINDELLAMA COLLECTION

Copies of Carina Clarke's Wild Windellama are available for sale. Carina's articles, accompanied by her beautiful sketches, about local birds, animals, plants, insects, fish and reptiles of the local area were published in the Windellama news over a number of years and are now collected in a two volume set called Wild Windellama. The set of two volumes is \$10.00 and free for members.



# D & J RIGOLI



HANDYMAN SERVICES  
&  
PROPERTY MAINTENANCE

ABN 43002820238

**\* INTERIOR LINING \* SMALL RENOVATIONS**

**\* SHED TO HOME CONVERSIONS**

**\* PERGOLAS \* VERANDAHS**

**\* PAINTING \* TILING \* PAVING**

And much more...  
no job too big or small !

Will beat any reasonable quote

Ph: **4844 5393**

TRAIN YOUR  
DOG



**SCOTT BORLAND**

Pack Leader / Rehabilitator

Professional Dog Training  
Dog Behaviour Consultation  
Pet Product Sales / Advice

0420 425 901  
info@trainyourdog.com.au  
www.trainyourdog.com.au



## BRIAN'S AUTOSCREENS & GLASS

Mirrors · Showers  
Mirror Wardrobes  
Windscreens · Glass  
Security Screens etc.

**440 Auburn St Goulburn**

**Ph 4821 2633**

Fax 4821 9133

## AARON'S MINI EXCAVATIONS

ABN 84197940351

- \* BOBCAT
  - \* 5 TON EXCAVATOR
  - \* TIPPER
  - \* SITE PREPS DRIVEWAYS
  - \* SITE / PROPERTY CLEAN UPS
  - \* POST / PIER HOLES
  - \* TRENCHING & DRAINAGE
  - \* RETAINING WALLS
- FREE QUOTES**

**4841 1862 - 0418 111 862**

***Need a Plumber Call. . .***

**GRAHAM MOON**

Lic. No. 194029C

Plumber - Drainer - Gas Fitter

Roof Plumber - L.P. Gas

DOMESTIC & COMMERCIAL - 7 DAYS

Phone **0428 223 677**



yarralaw springs  
wines

Goulburn & Southern Tablelands Newest Winery

**Cellar Door Upcoming Open Days**

Hours – 11am to 4:00 pm

August: **Saturday: 9th**

**Sunday: 10th**

~check website for any changes or  
call prior for a drop in visit or purchase anytime ~  
*25 kms down Windellama Road from Goulburn  
turn left into Muffets Road*

email: [admin@yarralawsprings.com.au](mailto:admin@yarralawsprings.com.au)

web: [www.yarralawsprings.com.au](http://www.yarralawsprings.com.au)

**133 Muffets Road, Quialigo**  
**Ph 4844 7188**

## What's Happening in Nerriga

### **NERRIGA PROGRESS & SPORTING ASSOCIATION**

**ANNOUNCEMENT OF 2014**

**ANNUAL GENERAL MEETING**

**to be held at 2PM  
SATURDAY AUGUST 9, 2014  
at  
Nerriga Hall,  
6088 Nerriga Road  
Nerriga NSW 2622**

**All are welcome**

Enquiries: Helen Rolland, Pres.  
Tel: 02 4845 9115

Report from  
NERRIGA PROGRESS & SPORTING  
ASSOCIATION

NPSA held another very successful Cake Stall and Sausage Sizzle on July 5. Being a very cold day, passing traffic did not seem to be as busy as usual.

Thanks to everyone who cooked, baked, served and bought.

Our next meeting is the AGM on Saturday August 9 in Nerriga Hall at 2pm.

Our next big even is BARGAINS IN THE BUSH which is to be held on Saturday September 27 - if anyone would like to book a stall, or has any enquiries, please get in touch with Helen Rolland on 4845 9115 or email - [helenrolland@bigpond.com](mailto:helenrolland@bigpond.com)

There have been two accidents on Braidwood/ Nerriga Road in the last month - so please take care on the roads.

## Nerriga Gardeners

In between rain showers, on Wednesday, we met at the home of Kay Hamer firstly for coffee and hot scones with jam and cream, before we ventured out to crown Kay's new fruit tree cages with protective netting.

Following a delicious lunch, we then removed old netting from her vegetable garden cage. All the old netting has been well recycled.

Next month on Wednesday, August 20, we will meet at 10.00 am at the home of Di Roberts, 1181 Oallen Road, Oallen to help with removal of the netting on her vegetable garden cages.

Please bring a simple plate of food to share for lunch.

Enquiries: Di Roberts - 4844 5344 or Kay Hamer - 4845 9021.







[divalls.com.au](http://divalls.com.au)

## VACUUM EXCAVATION UNIT

### 'Sucker Truck'



- Locating pipes and services
- Digging post holes for fences
- Cleaning out peer holes
- Digging power pole holes
- Cleaning out stormwater sumps

Vacuum excavation is a non-destructive digging process that uses high pressure water to cut through soil and then vacuum transfer the soil into a sucker truck.

Vacuumping reduces the risk associated by trenching and excavation using a metal backhoe bucket and augers around buried utilities, cables, pipelines and underground infrastructure.



*Utilities damaged by backhoe*



**No  
mess!  
No  
damage!**

*Residential Applications*



Our Sucker Truck operator, Mark Holms has worked for both Divall's Earthmoving and Concrete4Goulburn since March, 2013, and has experience in operating machinery and driving agitators. Mark has previously had experience as a diesel mechanic and welder. He holds his current HR licence, First Aid Certificate and is trained in Working in Confined Spaces.

**Don't be a sucker; let Divall's do it for you. Go to [www.divalls.com.au](http://www.divalls.com.au)**





## St Bartholomew's, Windellama.

In the 1850s Windellama was in the Bungonia parish and on 25th. October 1859 the Rev. E.B. Proctor of Bungonia opened a church school at Windellama on land that had been dedicated for use as a burial ground. The Sydney Church Society contributed £40 to the establishment of the school.<sup>1</sup>



The Goulburn Herald of 13 April 1859 carried an advertisement calling for tenders for the construction of *"a Church at Windellama, of slabs or weatherboards, on a stone foundation, or wholly of stone, with a boarded floor and shingled roof---according to a plan to be seen at Christ Church Parsonage, Bungonia, on a site which will be pointed out by Mr. R.C. Cartwright, of Windellama---will be received up to the 23rd. of April proximo."* Tenders were to be delivered to Rev. E.B. Proctor at Bungonia.<sup>2</sup>

The successful tender was received from Pinn brothers, builders of Goulburn for a church of stone construction.<sup>3</sup>

The foundation stone of the church was laid at 1 o'clock on 27 October 1859 by J.R. Styles Esq. J.P. of Bungonia. Rev. E.B. Proctor and Rev. Richard Leigh took part in the ceremony as did Messrs. Styles, Fox, Cartwright and others. Afterwards a luncheon was held at Mr. Cartwright's and about £7 was collected towards the building fund.<sup>4</sup>

Richard Cornelius Cartwright, a nearby landholder, put a great deal of effort into getting the church established at Windellama but he died on 25 December 1859 unfortunately not

seeing the completion of the church.

A report in the Herald of 5th. March 1862 states that the church building had progressed to the stage that the roof was on. The cost so far was about £170 with £30 still owing to the builders. The porch and vestry still had to be built. Added to this a fence was to be put around the churchyard and a 12 stalled shed or stable was to be erected for use by worshippers coming from a distance.

The cost still to be borne by the community was likely to be £150. A meeting of the Church Building Fund Committee was held at Mrs. Cartwright's on 5th March 1862 at which the accounts were audited.<sup>3</sup>

### References.

1. History of the Diocese of Goulburn. R.T. Wyatt. 1937.
2. Goulburn Herald 13th. April 1859
3. Goulburn Herald 5th. March 1862
4. Goulburn Herald 29th. October 1859
5. Goulburn Herald 12th. March 1862
6. Goulburn Herald 21st. June 1862

Tom Bryant  
6 July 2014

### Anglican Church News

Until further notification, both services will be at St. Bartholomew's Church, Windellama.

All services are held on the second and fourth Sundays in the month. Bishop Stewart Robinson will be attending our Service on Sunday 24th August to celebrate the church's 155th birthday.

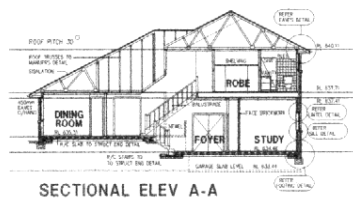
L Stockford

There will be a cuppa and finger food after the service, if you could bring a platter, it would be most appreciated.

# ACOM DESIGN

PO Box 806,  
Goulburn 2580

Yarralla,  
Oallen Ford Rd  
Bungonia 2580



**Robert C Everingham**

*Building Designer & Draftsman*

New Homes, Alterations & Additions  
Duplex, Villa, Townhouse Developments  
Rural, Commercial, Industrial Buildings  
Free Quotes - Competitive Rates - Prompt Service  
Energy Efficient (SEDA), Eng Dwgs: Mech, Struct, HVAC

**TEL 4844 4321**

**MOBILE 0417 682 022**

**FAX 4844 4323**

**EMAIL [acomdesign@bigpond.com.au](mailto:acomdesign@bigpond.com.au)**



MEMBER  
STANDARDS AUSTRALIA



MEMBER  
BUILDING  
DESIGNERS  
ASSOCIATION  
OF NEW SOUTH WALES INCORP

*Oallens  
Mobile Mechanic*



**Rob Hutchison**

Ph: 02 4844 5727  
Mob: 0401 078 483

- All mechanical repairs
- Breakdown service available
- Travel to you
- Motor re-builds
- New car services
- Stationary engine repairs
- Clutches, brakes
- Tractor repairs & re-builds

**COMPASS**  
TAX ACCOUNTANTS

**\$99**

**Tax Return\***

(introductory offer)

**Whatever your tax needs are...  
We're there for you!**

**Under 21's Tax Return \$69\***

*We'll prepare your returns promptly and efficiently and we guarantee our work will be to your satisfaction.*

\*Introductory offer of \$99 applies to each basic adult individual return. No limits apply. Valid to 31/01/2015.

**book your appointment on**

**(02) 4822 8889**



Find us on  
**Facebook**

**19 Market Street, Goulburn (next to Goulburn Soldier's Club)**

**Book Online: [www.compasstax.com.au](http://www.compasstax.com.au)**



# Oallen Ford Bridge Update

## Shoalhaven River Bridge - Oallen Ford Road Replacement of existing timber bridge

Community Update

June - July 2014



Existing bridge on Oallen Ford Road

Oallen Ford Road crossing of the Shoalhaven River consists of a timber bridge and concrete causeway and currently has a 5 tonne load limit.

Council has awarded the replacement of the existing timber bridge and concrete causeway to CivilBuild Pty Ltd. The new structure will be a 120m long, 8 span concrete bridge constructed using prefabricated planks and headstocks. The new bridge deck is at minimum 2.25m higher than the existing bridge.

The new bridge will be located 20m upstream of the existing timber bridge on the Windellama bank and 8m upstream of the causeway on the Nerriga bank, which has allowed the road closure period to be reduced from 12 weeks down to 4 weeks.

### Program

- Construction of pre-cast concrete components – currently 80% complete.
- Site set-up - late July 2014
- Site construction activity - early August 2014
- Completion date - mid/late November 2014
- Minor traffic disruptions will occur from early August to early/mid October 2014 after which the road will be closed for 4 weeks
- Sealing of the remaining unsealed section of Oallen Ford Road will occur in September – Mid November 2014

The program will be subject to weather conditions and particularly any flooding. Further updates will be provided as the project progresses.

The project budget is \$2,600,000 and is jointly funded by the NSW Government and Goulburn Mulwaree Council.

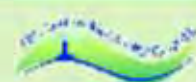


For further information contact:

Andrew Palmer, Manager Works

Ph: (02) 4823 4538

Email: [council@goulburn.nsw.gov.au](mailto:council@goulburn.nsw.gov.au)





# F I F E ' S S T O C K F E E D S



Round Bales  
Pasture Hay  
Square 8x3x2  
Lucerne Hay  
Rye & Clover



Also suppliers of Bird Seed, Dog Food, Cat Food,  
Wheaten Chaff, Oaten Chaff, Stud Mix

## 51-52 Knox St Goulburn

## Booyong Alpacas

2217 Windellama Rd.

Quialigo. NSW. 2580.

Tel. 02 4844 7267.

Mob. 0417 658730.

Web. [www.booyong.com.au](http://www.booyong.com.au)

Like us on Facebook

[www.facebook.com/booyongalpacashop](http://www.facebook.com/booyongalpacashop)

Email: [booyongalpacas@optusnet.com.au](mailto:booyongalpacas@optusnet.com.au)



**Breeding Coloured Huacaya Alpacas**

since 1997 with a current herd of 175 Alpacas

**Alpaca Sales & Stud Services**

**On Farm Alpaca Shop**

selling 100% Booyong Alpaca Products  
& Selected Imported Alpaca Garments.

Call us for advice or to visit the farm & view  
our Alpacas & Shop.

## NIRVALLEY HOMESTEAD NURSERY



### Fruit Trees Nut Trees, Berries Ornamentals *Huge range in stock*

629 Cullulla Rd, Tarago

PH **4849 4481**



★★★  
**Quality Plants  
Best Prices**

Sat & Sun: 8am-5pm,  
Fri & Mon: 10am-3pm  
Tues-Thurs: Call to  
check opening times

# WINDELLAMA VOLUNTEER RURAL FIRE BRIGADE



## WINDELLAMA RURAL FIRE BRIGADE

Report all Fires 000 Brigade enquiries 4844 5359 Yass - 6226 3100  
& Emergencies UHF 21

RFS website [www.rfs.nsw.gov.au](http://www.rfs.nsw.gov.au)

or

Brigade website [www.windellamarfs.com.au](http://www.windellamarfs.com.au)

**Captain – Rex Hockey 4844 5147**

**Snr Deputy – Jim Meehan, 4844 5554**

### Burning-off now permitted with regulations

While the fire season has finished and permits are not required for burning off from the 1<sup>st</sup> April 2014, there are still regulations that must be followed.

### **Fines can apply if regulations are not carried out.**

- ◇ Yass **MUST** be notified 24 hours before you light the fire, during business hours 9am to 5pm and by 3.30pm on Friday afternoons, phone 6226 3100.
- ◇ Your immediate neighbours must also be notified.
- ◇ Notify the Brigade as a courtesy to save time, if smoke is spotted, phone 4844 5359.

**For more information contact one of the Brigade phone numbers above.**

### **\*\* Windellama RFS Open Day Saturday 27<sup>th</sup> September 11am – 2pm \*\***

All welcome come along and meet members of the Brigade, enjoy a sausage sizzle.

### **Brigade AGM**

The Brigades' Member of the Year Award was presented by the Captain Rex Hockey to Marlene Carmichael in appreciation of her support to the Brigade throughout the previous year.

Listed below are the results from the Brigade AGM held on 28<sup>th</sup> June 2014;

### **Administrative:**

President Graham Kinder, Secretary Ellen Sylvester, Treasurer Keith Scorrar

### **Field Positions:**

Captain Rex Hockey, Senior Deputy Jim Meehan, Deputies Lynton Roberts, Marten Schutterups, Dave Edworthy, Brett Vilnis, Paul Alessi, Ashley Armstrong, Noel Sylvester, Graham Kinder, Wayne Back

### **Other Positions:**

Communication/Information Officer Bev McGaw, Equipment Officers, Doug Gurney, Mick Heppleston  
Training Officers, Rex Hockey, Wayne Back, Assistant Training Officers, Dave Edworthy, Graham Kinder,  
Catering Officer Marlene Carmichael, Assistant Catering Officers Judy Yates, Mick Ryan Community Engagement Officer Dave Edworthy.

**The Subs/donations** have been left the same \$10 residents, \$30 non-residents.

**Brigade meetings and Training Times** - to remain the 4<sup>th</sup> Saturday of the month.

**Meeting Times:** - 6:00pm, **Training day & times** - 1pm except for special events. Training times and scenarios are available on the Brigade website [www.windellamarfs.com.au](http://www.windellamarfs.com.au)

### **Training:**

If you wish to take part in the Windellama Brigade training or be contacted by email regarding the monthly training details visit the Brigades website and send an online contact form or email [windellamarfsttraining@gmail.com](mailto:windellamarfsttraining@gmail.com). For information on training dates, times and scenarios check the Brigade website or contact the Captain Rex Hockey 4844 5147.

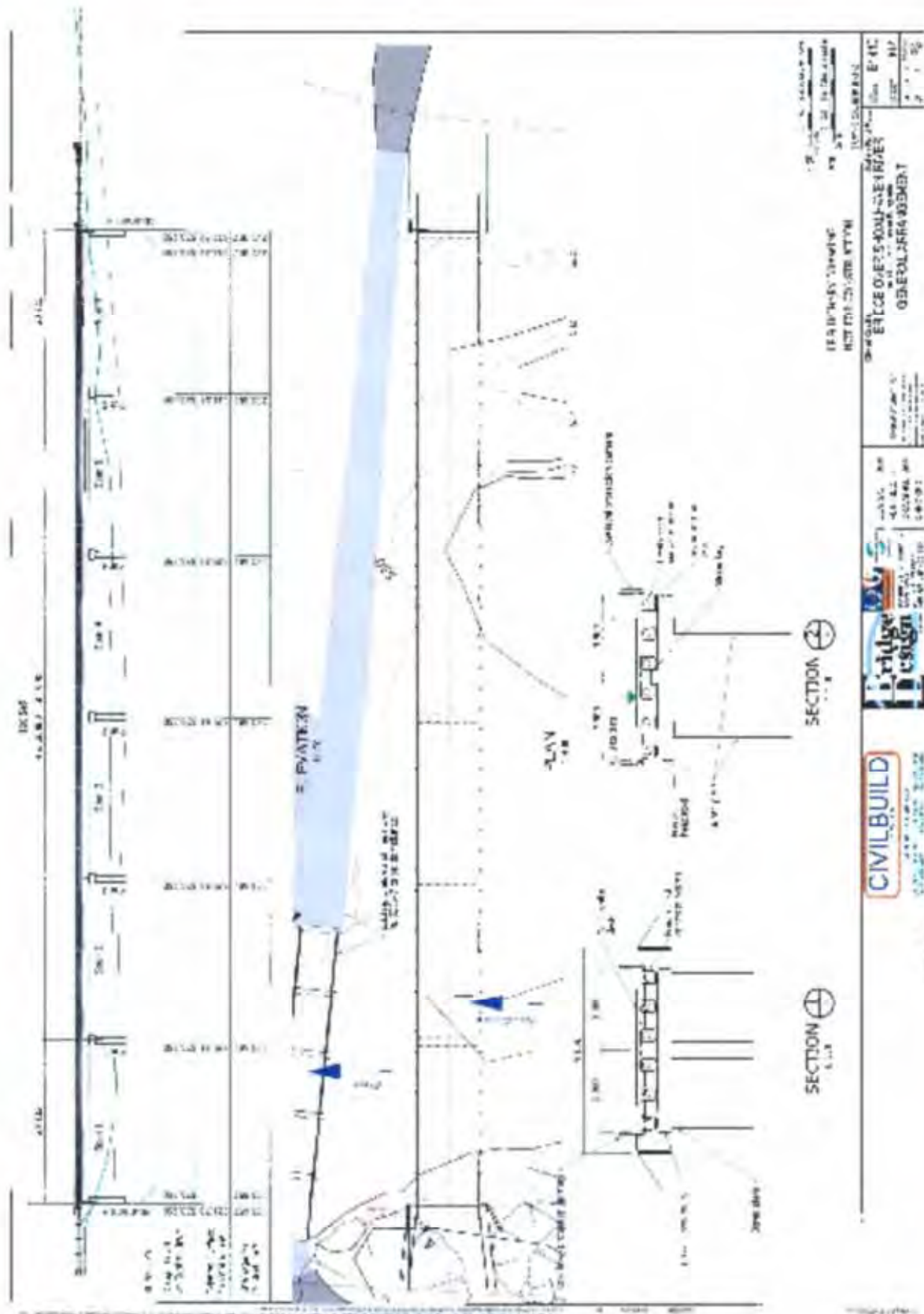
[www.windellamarfs.com.au](http://www.windellamarfs.com.au)

**General Meeting** 23<sup>rd</sup> August 2014, 6pm **Training** 23<sup>rd</sup> August 2014, 1pm. Possible 4WD training TBA.

**General Meeting** 27<sup>th</sup> September 2014, After the Open Day

**No Training** 27<sup>th</sup> September RFS Open Day 11am – 2pm

Please take care on our roads and see you at the next training and meeting. **All welcome.**







*Hello Everyone,*

Our members and guests enjoyed morning tea and lunch at the excursion we had to John Fifes and his absolutely wonderful collection of "collectables". Special thanks to John & Carol Fife for having us, we all had a very entertaining & very enjoyable time & congratulations on such a passionate collection. (Hope we can visit again sometime)



Thanks also goes to members and visitors who attended, our excursions would not happen without you all ... thank you.

Our next excursion will be to Stone House Cottage at Nerriga, this will be towards the end of September, all the details will be in the next edition of the news.

Our museum is open on Market Days - the third Sunday of each month 10am - 2pm

There is a selection of Windellama local history books by Tom Bryant and books by a local poet, Rex Hockey, for sale in the museum as well as **Motorcycle Grand Prix Posters for only \$20**, bookmarks and postcards with images of early Windellama.

**We also have volumes 1&2 of Wild Windellama by Carina Clarke For Sale at the Museum .... \$15.00**

***New Members & Visitors are always Welcome***

For any enquiries please contact:

Rex Hockey ..... 48445147 President

Julian Woods .... 48445270 Secretary

Marcia Tatam .... 48216421 Treasurer

**Don't forget to come along to your  
Windellama Country Market  
On Sunday  
17 August**



## MICK'S MULTI TRADES

ABN: 90 178 544 738

Multi Skilled Tradesman

Windellama NSW

Lic # MVTC 126573

Mob: 0413 059 587

Email: micksmultitrades@gmail.com

PROUDLY SUPPORTING THE COMMUNITY OF WINDELLAMA IS MICK,  
A MULTI SKILLED TRADESMAN, A DIESEL MECHANIC BY TRADE, AL-  
SO

AN EXPERIENCED HANDYMAN, GENERAL LABOURER,  
PLANT OPERATOR AND TRUCK DRIVER.

I HAVE ALWAYS LOOKED AFTER THE LOCALS, AND CAN TURN A  
HAND TO ANY JOB SO SHOOT ME AN EMAIL OR PHONE ANYTIME,  
YOU'LL BE PLEASANTLY SURPRISED AT MY DOWN TO EARTH RATES.

**Andrew Pearson**

**4844 5838 or**

**0400 285 765**

*REASONABLE RATES*

### **FOR HIRE**

**With Operator**

**Backhoe - Slasher - Loader**

**Grader Blade w/rippers**

**BOBCAT HIRE**

### **MOBILE MECHANICAL REPAIRS**

**Diesel / Petrol**

**Auto Electrical**

**For your truck, tractor, car**



**Athletics Coach**

**Personal Trainer**

**Marina Wenban**

**Ph: 0439 029 313**

**Accredited Athletics Australia,**

**AT&FCA, Fitness Australia**

**Advertise here  
for only \$6.50**



# Willowglen Gardeners

<http://www.whispersfromwillowglen.blogspot.com>

A few hardy souls met at the Goulburn Wetlands for a guided tour of the Wetlands by Ray Shiels, President of FROGS, Friends of Goulburn Wetlands and Swamps (Landcare). Ray is a mine of information and we had a very interesting morning.

The Wetlands is a project to convert an abandoned brick pit into public parkland and a natural stormwater treatment system for run-off from the Eastgrove residential area and overland flow from the Goulburn Golf Course and the river. The site of the brickworks is Heritage listed and there are plans to preserve the footprint of the brick pit and artefacts incorporated into the site.

The David Barnett Bird Hide gives a wonderful opportunity to sit and appreciate the diversity of the birdlife taking advantage of the ponds and the general tranquillity of area. There are plans for another bird hide on the opposite side of the ponds in the future.

An enormous amount of work has been done to clear the site of weeds and new planting of native species is taking place. It is an ongoing job to keep the site clear of weeds and all the work is being undertaken by volunteers, so if anyone would like to help they are welcome to turn up on a Wednesday morning!

The Wetlands have an interesting web site, if anyone would like further information: [goulburnwetlands.org.au](http://goulburnwetlands.org.au)

The next meeting is on 5 August at Lloyd & Irene's, 95 Roberts Road, starting at 10 am.





# ~~The Loaded Dog Hotel~~



Tarago EST 1848

Hoteliers: Nicole & Mark Ryan [www.loadeddoghotel.com](http://www.loadeddoghotel.com) 02 4849 4499  
1 Wallace Street TARAGO NSW 2580 | 02 4849 4499 | [loadeddoghoteltarago@gmail.com](mailto:loadeddoghoteltarago@gmail.com)

## LIVE MUSIC @ THE DOG

August 16th

**Col Finley**

September 20th

**Rose Carleo**

*New Sunday  
Night Menu*



Come and warm up  
this cold winter at  
your local pub

## The Dog Bistro

Nicole's Fish'n'chips Thursdays 6 - 8pm \$7:50  
Home made Pizza all day every day, eat in or take away



Bistro Hours:

Friday & Saturday 6pm - 8:30 pm | Sunday 6pm - 8:00pm  
Lunches 7 days 12 - 2pm

## SUBMISSIONS INVITED FOR 20 MILLION TREES PROGRAMME

The Federal Member for Hume has invited interested local land managers and community groups to get involved in the rollout of the *20 Million Trees Programme*.

"The 20 Million Trees Programme aims to re-establish green corridors, increase and improve the habitats of our threatened species and create greener spaces to improve the liveability of our communities," Mr Taylor said. "The key goal is to plant 20 million trees by 2020.

"The programme will be implemented in two streams. Firstly, competitive grants will be offered to land managers and local community groups and then a tender process will be conducted for larger scale service providers.

"There are opportunities in Hume for large-scale revegetation projects to be delivered on the ground. The Government is now inviting submissions from interested parties on how best to deliver large-scale tree planting to achieve real environmental outcomes and engage local communities.

"Suitable service providers are encouraged to take this opportunity to make a difference to the environment. Submissions received through the *Request for Information* process will inform a subsequent *Request for Tender* process that will invite potential delivery partners to apply to become a *20 Million Trees Service Provider*.

"The Government has committed \$50 million over four years to the *20 Million Trees Programme* with funding to commence from 2014-15."

For more information on *20 Million Trees*, visit [www.environment.gov.au/land/20-million-trees](http://www.environment.gov.au/land/20-million-trees).

### **P platers will have access to more vehicles**

From August 1 this year, there'll be new rules that allow P-plate drivers to drive a wider range of turbo, supercharged or V8 vehicles.

Until now, high performance vehicles have been measured based on the number of cylinders a vehicle has, or if a vehicle is turbocharged or supercharged. It will give them access to an extra 6500 vehicle models.

Goulburn Mulwaree Road Safety Officer Tracey Norberg said turbochargers and superchargers are usually used for fuel efficiency, and as a result, not all V8s, turbos and supercharged vehicles are high-performance vehicles, so these shouldn't be banned for P-platers.

"The vehicles that P-platers will be allowed to drive from 1 August are considered to have a low or moderate-performance, and they have modern, effective safety features," Ms Norberg said.

"This means P-plate drivers now have the option to drive more vehicles, and at the same time, will benefit from the safety features and enhanced fuel efficiency of these vehicles.

"There will still be some vehicles that continue to be that are banned, but these are high-performance and risky in your first few years of driving."

Mrs Norberg said to find out what vehicles the new laws will apply to, they could search the P1/P2 vehicle search tool, which is available on the NSW Transport website.

"This tool allows P-plate drivers to check whether a vehicle is legal for them to drive or not," she said.

"To use the P1/P2 vehicle search tool all you need to do is enter the vehicle's specifications like brand, year, make and model and the vehicle will come up as either banned, allowed, for review or they need to contact RMS (for older or more unusual vehicles).

The new rules will apply to P-platers who get their licence from 1 August 2014 onwards.

Although P-plate drivers will have a greater choice of vehicles to drive from 1 August 2014, it's important to note that there are some vehicles that were previously ok to drive that are now banned.

P-platers are still banned from driving: Vehicles with a power-to-mass ratios above 130 kilowatts per tonne (based on tare mass), or Vehicles with significantly modified engines, or Other vehicles that are classified as high performance because they have characteristics like fast acceleration.

For more information about the new rules visit the Roads and Maritime Services website at <http://roadsafety.transport.nsw.gov.au>



# *Rusty Balls*

- Natural bush soaps
- Pet shampoo
- Anti-bug balls - natural insect repellent
- Blind Baking Balls
- Hand made ceramics

Gary & Denise Johnson

**4844 5087**

[sales@rustyballs.com](mailto:sales@rustyballs.com)

[www.rustyballs.com](http://www.rustyballs.com)

# **SHEPHERD'S HILL NURSERY**

**321 George St, Marulan**

**Ph 4841 1404**

Fax: 4841 1454 Mobile: 0413 047 105

*Look for the house on the hill*

For all your garden needs &  
acclimatised plants

Potted colour, Seedlings, Bulbs, Fruit trees,  
Ornamental trees, Windbreakers,

Shrubs and more

Potting Mixes & quality soils & mulches.

Pots, Statues & Gifts

Gift vouchers & Eftpos available

We are members of NGI NA

Nursery & Garden Industry NSW & ACT



**A1**

**SEPTIC TANK  
&  
GREASE TRAP  
CLEANING SERVICES**



**0408 483 943**

Bob Baird Goulburn

**PH: 4822 3290**

7 DAYS—SERVICING ALL AREAS

## **BUSINESS REQUISITES Sales & Service**

- Photo Copiers
- Fax Machine
- Cash Registers
- Computers
- Stationery
- Consumables

Ph: **4821 5109**

E: [bus\\_req@ozemail.com.au](mailto:bus_req@ozemail.com.au)

**10 Russell Lane, Goulburn**

*Printer of your Windellama News*

# Windellama Public School News

Email: [windellama-p.school@det.nsw.edu.au](mailto:windellama-p.school@det.nsw.edu.au)

Phone: 4844 5130

Website: [www.windellama-p.schools.nsw.edu.au](http://www.windellama-p.schools.nsw.edu.au)

Fax: 4844 5265

## OPERA HOUSE PERFORMANCE AND EXCURSION

The students in 3-6 recently performed recorder at the Opera House. It was a very exciting and busy couple of days. We caught an early train to Sydney and after we dropped our overnight bags at our accommodation we made our way to the Opera House. We did a final rehearsal before the big night! What an amazing experience it was to perform at the Opera House and to a packed crowd. Lachlan, Chloe and Nelda share their feelings about the experience.



*"It was amazing going to the Opera House and playing in there. It was an experience to remember."* By Lachlan



*"When I got to the Opera House, it was amazing. When I was inside my jaw dropped. Standing in front of all those people was a good experience."* By Chloe



*"I liked the Opera House excursion because we slept over with friends. We also had fun and were happy."* By Nelda

## INFANT STUDENTS

While the primary students have been in Sydney the K-2 students have been busy with work.





# Better Heating

A lot of places are selling heating products, like wood & gas heaters.  
The difference is WE can show you how to use them!

We have the largest range of wood and gas heaters in Goulburn.

LARGE RANGE    GREAT PRICES  
FRIENDLY STAFF    GREAT SERVICE



**4821 1252 or 4821 4885**

388 Auburn Street, Goulburn [www.barbequesgalore.com.au](http://www.barbequesgalore.com.au)

**BARBEQUES  
GALORE**

**BBQ Better.**



This month prepare the beds for vegetables and flowers, for spring planting. Dig in compost and old animal manure with a generous handful of complete fertilizer and lime per metre.

Growing vegetables and flowers can be a drain on the soil, so for a successful and rewarding garden make sure you have fertile soil.

## VEGETABLES TO SOW

Seeds - Carrots, parsnips, lettuce, silver beet, onions and peas.

Asparagus and rhubarb crowns.

Plants - Cabbage, lettuce, silver beet, onions.



## FLOWERS

Seeds - which can be sown during August petunias, phlox.

Seedlings available now, which come into flower quickly as the days get longer and warmer. Pansy, viola, stocks, snapdragons, aquilegia, carnations, dianthus (double or single), primula, dwarf sweet William, alyssum, poppies and larkspur.



In our area roses and fruit trees can still be pruned. After pruning roses spray with Lime Sulphur.

Spray apple, pear, plum, quince with Winter oil, this control mite and scale.

If you have had trouble with black spot on apples and pears, or leaf curl on peaches and nectarine, spray with Lime Sulphur or Bordeaux. With peach and nectarine, make sure they are sprayed no later than pinking of the buds. If this time of year is wet, it is recommended to spray these with Benlate which is a Systemic Fungicide.

## FROST DAMAGE

It's not the frost itself that causes plant damage, but the thawing afterwards. The cold temperatures cause a plant's cells to shrink, forcing water into spaces between the cells where it freezes and forms ice crystals.

As temperatures rise, the water is absorbed back into the cells. If thawing is slow, the cells are deprived of water and become dehydrated resulting in frost burn.

## LEAFBLISTER SAWFLY

Leafblister sawfly is native to south-eastern Australia and introduced in Western Australia.



Female sawflies are wasp-like insects and their larvae are cream-coloured grubs found in leaf mines in eucalyptus.

Their mines are blister-like patches up to about 25mm wide on the upper surface of older leaves in lower branches. Severely infested trees have a burnt appearance. Make sure trees are suitable for your area.

Minor infestations can be pruned off. Squash larvae and pupae inside mines. Enemies are Birds and parasitic wasps.



# Goulburn Off Road Carts

[www.offroadcarts.com.au](http://www.offroadcarts.com.au)

**OPEN 6 DAYS**



**PORTABLE PETROL GENERATORS**  
From \$770



**LARGE DIESEL GENERATORS**  
\$5,900



**CARTS & BUGGIES**  
From \$3,300



**FARM BIKES**  
\$2,600



**QUAD  
BIKES**  
From  
\$5,000



**4WD TIPPERS** \$9,300



**FULLY EQUIPPED FIRE TRAILERS**  
\$4,200

**ENQUIRIES & SALES - PHIL BONSER**

**565 Mt. Baw Baw Rd, Goulburn NSW 2580**

**Mobile: 0419 694 148 Ph: (02) 4821 0397**

# CHURCH INFO

## Catholic Church Services

Parish Priest: Fr. Dermot McDermott

Assistant: Fr. Sijo Jose

Presbytery & Parish Office

Phone 4821 1022

\*\*\*\*\*

Sunday Mass will be at 8am on the 2nd & 4th  
Sunday at St. Patrick's **Marulan**.

Mass Times in **Goulburn** are:

Saturday Vigil Mass:

5pm (DST) at St. Peter & St. Paul's

Sunday: 7am. at Our Lady of Fatima,  
Nth. Goulburn

Sunday: 10am. at St. Peter & St. Paul's

---

### **St. Joseph's Church, Tarago**

3rd Sunday of the Month

Enquiries: 4821 1022



## **CHURCH SERVICES**

### August

St. Bartholomew's - Windellama

Sunday 10th -11:30am

St. Bartholomew's – Windellama

Sunday 24th - 11.30am

**We have all our services at St. Bart's after  
May due to the church at Bronte can't be  
heated.**

On August 24<sup>th</sup> it is our 155<sup>th</sup> Anniversary of St.  
Bart's and our Bishop will be attending that day.  
A light finger food luncheon will be served after  
the service at 11.30. Anyone attending could  
bring a plate please.

The Reverend Vanessa Bennett can be  
contacted on 4821 3631 or mobile 0417  
699 700

## **Rainfall Stats**

### 16th May to 15th June



<b>Rosewood</b> , Windellama Road, Windellama	21 ml / 5 days
<b>Gar-Den</b> , Oallen Ford Rd, Oallen	12ml / 4 days
<b>Johnno's Store</b> , Oallen Ford Rd, Bungonia	ml days
<b>Tarkierelea</b> , Fernleigh Close, Windellama	ml / days
<b>Bee Ranch</b> , Oallen Ford Rd, Windellama	13.5 ml / 8days
<b>Corang Cottage</b> , Braidwood Road Nerriga	5 ml / 4days
<b>Tarago Village</b>	34ml / 5days
<b>Nerrimunga Creek Rd</b> , Windellama	14.4 ml/ days
<b>Willy Weather</b>	ml / days 1st-**th June

---

### **St. Andrews (Anglican) - Tarago**

2nd Sunday 9am

St. John's - Lake Bathurst

4th Sunday 9am

---

## **NERRIGA**

### **ANGLICAN CHURCH SERVICES**

**Held at Nerriga Church**

**2nd Sunday each month at 2pm**

**(Except Easter & Christmas)**

**All Welcome**



# Classified Advertisements

**All personal classifieds are FREE & also included in the Tarago Times**  
**We run your advert until you let us know when you have sold it or gained it**

---

## GENERAL FOR SALE

---

**Pine TV & display unit** with 23" analogue TV & digital box. \$250 for the lot. Ph 4849 4371

**Teak entertainment unit**, with two glass door display. 6x4 foot. \$75.00 ONO.

**Double bunks**, Metal, with ladder, new innerspring mattresses. \$125 ONO

**Two wooden bed side tables** with cane draws. \$50 for two. Ph. 4849 4480

**Assorted Household furniture**, fridge, table, chairs, china cabinet, T/Tennis table. Braidwood Road TARAGO. Ph 0417 484 944

**Roller door** - colorbond brown - incl brackets and tracks. \$100 Ph 0422 971 217

**Mirrors** - Full length 1800 x 450 mm dressing room mirror with painted timber frame. \$50.00  
Vanity mirror 900 x 750 mm unframed \$30.00  
Phone Bob 4844 5001 after 7.00 pm.

**3 seater lounge + 2 matching armchairs**  
\$150.00 Bunk beds will convert to two single beds plus a trundle bed \$250.00 4844 5369

**JET Wood Lathe** Model 1236, 300mm bed with face plate & tool rest, 3 years old, good condition \$800 o.n.o. Phone Greg 4844 5157.

**Ride on Mower**, Masport Mercury. 2007 Model 20 H.P. 42 inch cut. Regular service – needs new Spindle Housing. \$1,000. Ph 0419 004 919

1 x **King Single bed** \$200; 1 x **Single bed** \$150; 1 x **Single bed** \$100; **Dressing table/ chest of drawers** (8) \$150; 1 x **Glass TV table** \$150; 1 x **Glass coffee table** \$50  
Ph 0411 421 416

---

## GENERAL FOR SALE

---

**Lounges** - 1x3, 1x2 + ottoman - yellow fabric, Matching chair in navy blue. All GC. Offers over \$500 considered. 4849 4222

**Desk** - large timber, 2x draws/storage under. Leather inlay + matching 2 drawers file cab. Ergo office chair. All VGC. \$400 ONO 4849 4222

**Washing machine** NEC top loading 6.5kg. NW.652. Second hand. Good condition. Works well. \$100 phone Mark 0415 603 282

**On-site caravan** at Pine Park Caravan Park, Greenwell Point. Fully equipped, including annex with ensuite. Storage shed and room for a boat. \$12,000. Phone Ken - 4844 5157

**Firewood.** \$150 per load. Ph 4849 4520 for delivery.

**Firewood.** Seasoned hardwood. 2 tonne truck load \$430, ½ truck load \$250. Ph 0401 241 646

**Firewood** - Split, seasoned. Ute load - approx. one tonne. Local delivery - \$150 per load. Ring Greg - 4844 5157.

**Firewood** - \$150 per load, includes delivery. Ph 4849 4520

---

## ANIMAL RELATED FOR SALE

---

**Parrot Cage** on stand, good cond. \$150 ONO. Ph 0429 006 745

**Cocky's Cage** 190cm high, 150cm wide, 65cm depth \$100.00 Ph 4844 5287

**Reptile cage** - 2' x 2' x 2' Glass enclose with heat pad & light & mat. \$250. Ph 4844 7168 or 0423 524 296

**Saddles**, good condition, \$350 & \$200. ONO. Riding helmets \$30 and \$20. Also other gear: bridles, leather straps, etc. Ph 0434 286311.

# Classified Advertisements

**All personal classifieds are FREE & also included in the Tarago Times**  
**We run your advert until you let us know when you have sold it or gained it**

---

## ANIMALS FOR SALE

---

**Puppy**, bully stag, male, white, vac., microchipped. \$400 ONO Ph 0429 006 745

**Piglets** - different ages so different prices. Ph Bob McDonald 0429 494 331

Young **ducklings** - Buff Orpington/Peking cross - \$12 each **Quarrions** - greys, and Pearls - \$15 each. Ph 4845 9147 after 6PM.

**Working Bull Murray Grey**, \$950.00 ONO. Ph. 0414 616 960

**Alpacas** - lots of different colours & ages. From \$250 each Phone Jacki 0428 298 157 Boxers Creek

**Angora Goats** - various ages & sizes. \$20-\$35 each. Ph 0428 238 204

**Dorper Rams**, black headed, 1 x 4 yrs, 1 x 1 yr. Ph 4844 5570

**Sheep** First Cross BL/Merino, 6 ewes, \$65 ea or \$360 the lot. 11 wethers, \$70 ea or \$700 the lot. Call Keith 4849 4256

**Quarrions** (cockatiels) - \$12 each Ph 4845 9147 after 6pm

**Horse part Arabian**, 3 yrs old, regd, 14.2 hh, chestnut mare. \$3,000 Ph 0429 461 490

---

## FOR RENT

---

---

## WANTED

---

Heavy chain harrows or diamond harrows. Ph John 0410 634 463

---

## CARS, BIKES, TRAILERS, etc. FOR SALE

---

**Toyota truck**, 1988, good working order, with 13ft steel tray & stock crate. Ph 4829 5123

**Transalloy Ute Tray** 1.8 x 1.8, suit most 4x4's, complete with dropsides and LED lights VGC -\$1100 o.n.o. Ph 0412 421 464

**Polished Alloy Rear Ute Sports Bar** \$100 Ph 0412 421 464

**Aluminium Savage 4.3m Boat** (1995) with 30hp Yamaha outboard on brooker trailer. Front steering & canopy, electric start, radio, compass, plus all extras. Always garaged & flushed, runs well. \$5,900 ONO Call Scott 0418 563 888

**1997 Mazda Ute**. 8 ft alum tray with racks, new clutch, rear wheel bearings & rear shackle bushes. Service record for past 6 years avail. Rego to Apr 2015 QWW 505 **\$3,900** Ph 4844 5344

**Motorhome** Hino Rainbow bus, professionally converted for two. Fully equipped and registered. Inspection

---

## RURAL RELATED FOR SALE

---

**Duncan Direct Drill**, 20 tyne. Good order. \$3,500. Ph 4844 6250

**Stockcrate** 1.8 x 1.8 x 1.2 galvanised 40 x 40mm, Good for sheep or calves, sliding rear roller door VGC -\$500 o.n.o. Ph 0412 421 464

**Sisal Baling String** 4 x 2 packs \$180.00 ph 4844 5344

**Mag MATE PRO** 200 migwelder with cyclinder \$700 ph 4844 5344

---

## WANTED

---

**Knitting wool** for volunteer knitters for charity. Any leftover wool, any ply, gratefully accepted. Ph Denise 4844 5087



## Our Advertising Charges

Classifieds - Personal (maximum 2 lines)	<b>FREE</b>	
	<b>Month</b> ( 11 issues)	<b>Year</b>
Small advertisement (business card size)	\$ 6.50	\$ 65.00
Quarter page advertisement	\$12.00	\$120.00
Half page advertisement	\$25.00	\$250.00
Full page advertisement	\$50.00	\$500.00
Double page discount	\$90.00	
Inserts - \$40.00 for 400 inserts into hard copies		
Typesetting of adverts: \$50		

### **PAYMENT:**

**Cheques:** payable to *Windellama News*

**PO Box 705, Goulburn. 2580**

**Direct Deposit or EFT:** IMB Ltd; BSB 641.800; A/c 200045794 with Name & advert as detail

**\* Unpaid adverts will be cancelled  
after one month**

**\* All advertising copy must be  
accompanied with payment**

All advertising enquiries to  
Christine Woodcock

## **Fees for Hire of Hall or Supper Room at Windellama Hall**

<b>*<u>HALL</u> ALL DAY</b>	<b>\$200</b>
<b>DAY 4hrs or less</b>	<b>\$100</b>
<b>EVENING/NIGHT**</b>	<b>\$200</b>

\*Includes Supper Room & Kitchen

\*\* \$2 per hour for heating

### **SUPPER ROOM (Includes Kitchen)**

<b>ALL DAY</b>	<b>\$80</b>
<b>DAY 4hrs or less</b>	<b>\$40</b>
<b>EVENING/ NIGHT</b>	<b>\$100</b>

# Use of the premises prior to your booked  
function will incur a surcharge of  
Supper Room Fee

**To Book please ring W. P. A. Secretary,  
Christine Woodcock on 4844 7275**

## TARAGO TRANSFER UPDATE & DRUM MUSTER STATION

Open Friday to Monday  
8.00am—4.45pm.

**Card required for household waste,  
or fees apply.**

**Free recycling of the following:**  
Plastics, tins, oil, batteries, glass, pa-  
per and cardboard.

**Free recycling also of Drum Muster  
Chemical Drums providing they are  
empty, triple washed and have the lids  
removed**

## Tipping Fees for Tarago

### **Sorted Waste - Domestic Residents only**

Car, station wagon, small ute or small trailer	\$ 16.00
Medium trailer, large ute or 1-tonne truck load	\$ 21.00
Large trailer load	\$ 33.00

### **Unsorted Waste and Non-Residents Waste**

Garbage & trade waste (uncompacted, per cubic metre)	\$ 78.00
Garbage and trade waste (compacted, per cubic metre)	\$ 133.00
Other unsorted waste— 2 x sorted rate per category	
<b>Hard fill demolition waste not accepted at Tarago</b>	

**Animals — *Note: Animal carcasses cannot be dumped  
at Tarago as there are no facilities for burial please refer  
to Goulburn Mulwaree Council for details on availability  
in this area.***

<b>Car Bodies</b>	<b>\$ 56.00</b>
<b>Tyres — Car Tyres (each) - per tyre</b>	<b>\$ 11.00</b>
Motorcycle tyres (each)	\$ 9.00
Truck tyres (each) - per tyre	\$ 26.00
Tractor tyres (each) - per tyre	\$ 95.00

# COMMUNITY INFORMATION

## Windellama Progress Association

Lloyd Turner (President) 4844 5214  
Christine Woodcock (Secretary) 4844 7275

## Windellama Rural Fire Brigade

Rex Hockey (Captain) 4844 5147  
Graham Kinder (President) 4844 5330  
Ellen Sylvester (Secretary) 4844 5407

## Windellama Field Day Committee

Heather Caulfield (Secretary) 4844 5120  
Frances Knights (Treasurer) 4844 5157

## Windellama News

Christine Woodcock (Secretary) 4844 7275  
Lyn Jones (Editor) 4844 5843  
Gayle Stanton (Editor) 4844 5156

## Windellama Garden Cub Inc.

Pam Williams (Secretary/Treasurer) 4844 5194

## Windellama Hall Country Markets

Bob Shaw 4844 5001

## Windellama Historical Society

Rex Hockey (President) 4844 5147  
Julian Woods (Secretary) 4844 5270

## Windellama Landcare

Warren Yates (President) 4844 5350  
Sandra Greville (Secretary) 4844 5047

## Windellama CFR

Kevin Muffet 4844 7143

## Windellama School P&C

Shelly Andrews (President) 4844 5630  
Heather Caulfield (Secretary) 4844 5120

## Willow Glen Gardeners

Warren Yates 4844 5350

## Wires (wildlife rescue)

Marian Pearce 4844 5244  
Southern Tablelands WIRES 4822 3888

## Justice of the Peace

Linda Shannon 0429 980 141  
Geoff Burns 4849 4330

## Nerriga PSA

Helen Rolland (President) 4845 9115

## FOR ALL EMERGENCIES

eg. FIRES / ACCIDENTS

PHONE 000

For Mobile users & Landlines



## Important Phone Numbers



### Rural Fire Brigades

Windellama	Rex Hockey	4844 5147
Tarago	Ken Vassel	4849 4652
Taylors Creek	Dave Elward	4849 4240
Mt Fairy/Boro	Mike Welford	4849 4623
Bungonia	Craig White	0407 718607
Gundry	Jason Gray	0408 667158
Nerriga	John Rolfe	4845 9160
Bushfire Information		1800 NSW RFS
	or	1800 679 737

[www.windellamarfs.com.au](http://www.windellamarfs.com.au) or  
[www.rfs.nsw.gov.au](http://www.rfs.nsw.gov.au)

**WINDELLAMA PH: 4844 5359 or**  
**CHANNEL 21/209 Base**



### AMBULANCE

**000**

Ambulance Booking 13 12 33  
Goulburn Ambo Station 4827 0444

### Windellama SES

Kevin Muffet 4844 7143  
Poison Info. Service 13 11 26  
Goulburn Base Hospital 4827 3111



### Police

Tarago Station -  
Snr. Constable Brad Carey 4849 4411  
Goulburn 4824 0799

### Other

Goulburn Railway Station 4828 5816  
Train info & bookings 13 22 32  
[www.countrylink.info](http://www.countrylink.info)  
Country Energy - interruptions 13 20 80



# August 2014

**Mon      Tue      Wed      Thu      Fri      Sat      Sun**

				1	2 Nerriga Cake Stall	3
4 Exercise @ Hall	5	6	7 School Playgroup	8	9 Canassist @ Windellama Hall NPSA AGM	10 St. Bart's
11 Exercise @ Hall	12	13	14 School Playgroup	15	16	17 Windellama Hall Country Markets
18 Progress Meeting Exercise @ Hall	19	20 Nerriga Gardeners	21 School Playgroup	22	23	24 St. Bart's 155 year celebration
25 Exercise @ Hall	26	27	28 School Playgroup	29	30	31