



# Landcare Update



President: Greg Knights Ph:4844 5157  
Sec: Shirley Cornish Ph 4844 5101 Fax 4844 5364

## Landcare Awards Postponed

Due to a clash of dates with other organisations and their Christmas events, the planned Upper Shoalhaven and Upper Deua catchments Landcare Awards Dinner has been postponed to early 2007. Landcare groups and the general community will be informed of the new date once alternative arrangements have been made.

It is sincerely hoped that this change does not cause any inconvenience. However, the change will provide additional time for the submission of award nominations, particularly in the Education/School award, Junior Landcarer award and the Landcare and Government Partnership award categories.

Landcare groups, community groups, schools and government agencies are encouraged to nominate projects, groups and individuals for these local Landcare awards.

For more information or to download a copy of the award nomination form, visit the Upper Shoalhaven Landcare website: [www.shoalhaven-landcare.asn.au](http://www.shoalhaven-landcare.asn.au)

For further information about Landcare and availability of funding support, visit the website or contact David Rush on 4842 2594.

**The AGM for Landcare will be held on  
Saturday 13th January 2007.**

**Come to the Cornishes at 10am  
for a 10.30am start.**

**Adrook, 2313 Oallen Ford Rd.**

Three of our Members are attending a Training day at Braidwood to be run by Southern Rivers Catchment Management Authority and Conservation Volunteers Australia (CVA).

The Training is on Occupational Health & Safety and risk management.

CVA has 10 'In Safe Hands Toolkits' to give to successful groups. These comprise detailed manual, training, Safety E news, updates and a 'help' desk. Updates and help desk are provided for 12 months following the training session.

Members will be called upon in the near future (when Merv's backhoe is 'fixed') to repair damage carried out by vandals at the Oallen Ford site.

Another quantity of large boulders will be put in place to hopefully deter any further mindless vandalism.

Best wishes to everyone - 2007 is coming on far too quickly.

Take Care and give a Smile to the next person you meet.

Sec.Shirl.



Field Day  
snapshots



# **SOLAR POWERED SOLUTIONS**

(S.E.I.A.A. accredited)



**Custom Design , Supply & Installation  
of Renewable Energy Systems**



**Power Systems — Solar — Wind — Hydro**

**Free Installation on Systems**

- \* Solar Pumping
- \* Pressure pumps
- \* Vestfrost Refrigerators & Freezers
- \* Daken electric fence
- \* Advanced/ Honda Generators all sizes
- \* Bushman Water Tanks
- \* Solarhart Hotwater (rebate available)

**Shop 139 Wallace St Braidwood**

**Ph 4842 1333**

**Mobile 0429 319 068**

**Email: Edwards.L@bigpond.com**

***Yes we handle all rebates on Solar Panels***

## **FIFE'S STOCK FEEDS**



**Round Bales  
Pasture Hay  
Square 8x3x2  
Lucerne Hay  
Rye & Clover**



**Also suppliers of Bird Seed, Dog Food, Cat Food,  
Wheaten Chaff, Oaten Chaff, Stud Mix**

**51-52 Knox St Goulburn**

**02 4822 3111**



## WINDELLAMA HISTORICAL SOCIETY Inc.



### JACQUA SCHOOL

*by Tom Bryant*

The community of Jacqua, like most rural areas of the nineteenth and twentieth centuries was serviced by a small country school. In October 1873 a provisional school was set up at the Jacqua Reefs gold mining site near Spring Creek and Spa gold fields.

By 1875 gold mining had all but ceased at Jacqua Reefs and a new school was set up in the area that we know as Jacqua. This school, now known as just Jacqua was located in the old Jacqua church that had been newly renovated, having been built as a church in 1843. It was situated about 1.1km (.8 mile) from Jacqua homestead towards Bungonia.

The residents behind the move to set up the new school were John Wood, Patrick Glennin, John Evans, John Noble and Richard Tickner. The school closed in June 1878 but re-opened in July 1880, again in the church. By this time the church had resumed services so it had school children during the week and parishioners at the weekends.

During this time and a number of years previously, George Samuel Moore had been teaching the Blake children and other families at Yarralaw. When the Jacqua school re-opened in 1880 it in effect put Mr Moore's school out of business so he moved on to Nerriga to teach.

By the end of 1880 or early 1881 the Council of Education built a new school building on land, portions 82 and 83 about half a kilometre towards Bungonia from the church.

By April 1882 the school had gained public school status, which it retained until December 1899 when it again closed for a short while.

At some stage, possibly about 1887 a new school building was erected to the west of the old school on portions 91 and 92. This school was later destroyed in a bush fire and another school was built about 1897 to the west of Jacqua homestead on portions 107 and 108.

Jacqua school re opened again in March 1900 as a half time school with Rose Vale school until October 1900 when it changed to become half time with Inverary school but Jacqua again closed in March 1905.

It re-opened again in October 1917 as a half-time school with Quialigo school but closed for the last time in July 1924.

#### References.

*Government Schools of NSW 1848-1993.* NSW Department of School Education.

*The Diary of a Bush School Teacher, George Samuel Moore 1880-1881.* Tom Bryant

State Records NSW School Files 5/16373.3 Jacqua.

*Bungonia to Braidwood.* Barry McGowan

Parish map, County Argyle Parish Bungonia 5<sup>th</sup> edition 7 September 1927.

### GEOFF MEREDITH, Racing car driver

Windellama was once the home of racing car driver Geoffrey Charles Meredith. He lived at Buburba, Windellama for a time around 1925-27 where besides being a racing car driver he was a grazier.

Geoff Meredith owned several French "Bugatti" sports and racing cars. At one stage he drove a Brescia Bugatti on Gerringong beach at 100 m.p.h. and also drove on the old Maroubra speedway in Sydney in 1925-26.

He doesn't seem to have been at Windellama for very long as he only appears there in the 1926 electoral roll. During his time at Windellama he was visited by other notable racing drivers such as Hope Bartlett, Albert Vaughan, Leo Salmon and Phil Garlick.

In 1926 he was elected Vice President of the Goulburn Motor Club. Meredith raced extensively at Penrith and Maroubra speedways with limited success and he even turned his hand to motorcycle racing.

Goulburn hosted the Australian Grand Prix in January 1927 at the old showground where the Workers Arena now stands. Geoff Meredith raced his type 30 straight 8 Bugatti at this event which he won with his friend Hope Bartlett second.

I can remember my late mother speaking of Geoff Meredith and his Bugatti car and also of Salmon and Vaughan. She probably met them when they visited the district.

*Continued over.....*

**GOULBURN  
AND RURAL**



**PRODUCE  
SUPPLIES**

GILMOUR STATION PTY LTD T/A  
A.C.N. 001-792-632

**149-159 SLOANE STREET, GOULBURN, N.S.W. 2580  
PHONE (048) 21 3655, 21 3616. FAX (048) 21 8852**

**Goulburn Produce & Rural Supplies – Your  
Leading Rural Outlet for:**

**POLY PIPE – IRRIGATION – PUMPS**

**SPRAYERS – ANIMAL HEALTH**

**WEED KILLERS**

**POOL CHEMICALS**

**SOFT AND HARDWOOD TIMBERS**

**CHAIN SAWS – MOWERS**

**BRUSH CUTTERS – DOG FOOD**

**GRASS SEEDS – SUPERPHOSPHATE**

**DYNAMIC LIFTER**

**BUILDING AND PLUMBING SUPPLIES**

**R M WILLIAMS BOOTS – CLOTHING**

**GENERAL WORK CLOTHING**

**BOOTS – RUBBER BOOTS**



**149-149 SLOANE STREET, GOULBURN, NSW 2580**

**PHONE (02) 4821 3655 FAX: (02) 4821 8852**

**GOULBURN PRODUCE &  
RURAL SUPPLIES**

**ONE STOP SHOPPING**

**GOULBURN  
AND RURAL**



**PRODUCE  
SUPPLIES**

GILMOUR STATION PTY LTD T/A  
A.C.N. 001-792-632

**149-159 SLOANE STREET, GOULBURN, N.S.W. 2580  
PHONE (048) 21 3655, 21 3616. FAX (048) 21 8852**

## **Terry's Plumbing Services**

lic 66856c

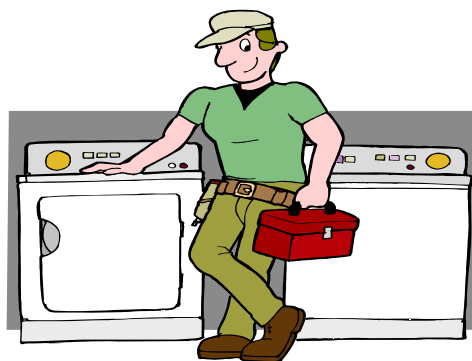
**Phone TERRY HANNAN on**

**0429 445 337 or  
4844 5337**

**24 hours / 7 days**

**All Types of Plumbing work including:**

- **New Houses and Extensions**
- **LP and Natural Gasfitting**
- **Roofing and Guttering**
- **Drainage and Septic Installations**
- **Rainwater Harvesting**
- **Hot Water Heater Replacement and repairs**
- **Blocked Drains, Leaking Taps**



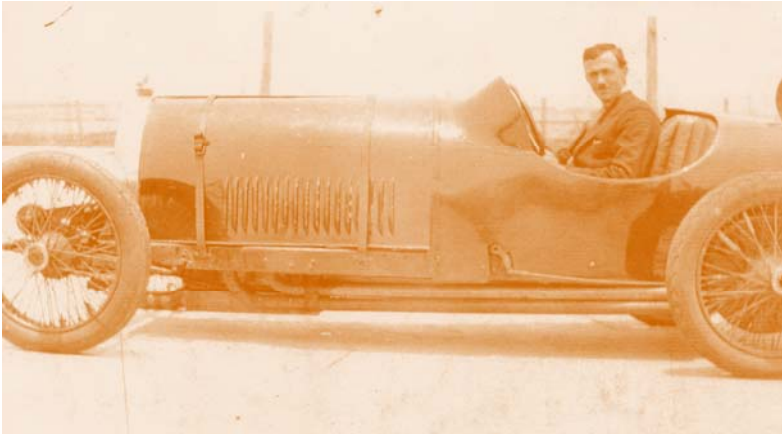
**SERVICING ALL AREAS**



Later in 1927 Geoff went to New Zealand and raced his car on Muriwal beach without much success. He went to England in 1928 to manage a team of Australian motorcyclists who were trying to interest the English in the new sport of dirt track speedway.

Not having been in England very long he went to the Isle of Man to view the motorcycle races but contracted pneumonia and died in Nobel's General Hospital in Douglas, Isle of Man on 13 June 1928.

He was buried in the Borough Cemetery, Douglas, Isle of Man.



**Geoff Meredith in his Bugatti racing car taken at Maroubra speedway**



**Geoffrey Charles Meredith's headstone in the Borough Cemetery, Douglas, Isle of Man.**

#### References.

Electoral Rolls.

Papers of my late mother.

*One For The Road.* Jack Pollard.

Goulburn Evening Penny Post.

Sydney Morning Herald.



**Field Day  
snapshots**





# WINDHELLAMA VOLUNTEER RURAL FIRE BRIGADE



Report  
all  
Fires  
000

**PERMITS REQUIRED 1<sup>ST</sup> October 2006 – 31<sup>ST</sup> March 2007**

**Contact Lynton Roberts 4844 5118 for ALL permit requirements**

**Tablelands Zone Yass Ph 6226 3100 Fax 6226 3624**

Brigade  
enquiries  
4844 5359

**\* \* \* Be Extremely careful when working with Machinery Outside \* \* \***

When working with **slashers** you are now required to **carry** with you either a **9kg fire extinguisher** or **knapsack of water**, penalties apply for not carrying either the fire extinguisher or water.

## Accredited Basic Firefighting Course

The Windellama Brigade will be running a basic firefighting course next year possibly at the beginning of May. For all enquires and requirements contact the Captain **Lynton Roberts 4844 5118** to put your name down.

## Ladies Information Day

The Windellama Brigade has already had some enquires about the Ladies Information Day early in the new year, so phone Lynton now to put your name down. This day will consist of information and demonstrations on, how to be prepared and what to do for the fire season. Contact the Captain **Lynton Roberts 4844 5118** to put your name down or enquiries.

## Permits Required During the Fire Season

Remember permits must be obtained before any burning off can be done during the fire season. When a total fire ban is issued there are precautions that must be taken particularly when working outside, and if possible many tasks such as working with welding equipment, slashers etc. should be put off. For **permits** contact **Lynton Roberts on 4844 5118**.

## When a Total Fire Ban is Declared

On days of extreme fire danger, which is caused by a combination of certain weather conditions and dry vegetation, the Commissioner, NSW Rural Fire Service may declare a total fire ban.

If a Total Fire Ban is declared, a media release will be issued listing the weather forecast districts involved. Total Fire Bans will also be announced through newspapers, radio and TV. If you are in doubt, you can enquire with the Fire Control Office, or the Brigade. A Total Fire Ban usually lasts for 24 hours – from 12 midnight. These periods can be extended, if in doubt check.

## During a Total Fire Ban

Campfires, solid fuel barbecues, ovens & kettles **are prohibited** (ie those using wood, heat beads, charcoal or briquettes).

## Care With Equipment & Machinery

The use of equipment and machinery in the bush fire danger season should be restricted and used with caution this includes **lawn mowers, metal bladed brush cutters and ride-on-mowers**.

## On Days of Total Fire Ban

- \* Welding, grinding, soldering (with flame) and gas cutting in the open air are prohibited by The Rural Fire Act in most cases.
- \* The use of machinery such as tractors, slashers or even chainsaws should be postponed if possible, as the risk of starting fires is extremely high. If the work is essential follow the general rules outlined for the Bush Fire Danger Season and use extreme care.
- \* **Motorised machines** driven or **used in any grass**, crop or stubble must be fitted with safety guards so constructed as to prevent any heated areas from coming into contact with combustible matter.
- \* Avoid driving vehicles into long dry grass.
- \* Take care when disposing of matches and cigarette butts.

## Penalties Apply

**Penalties of up to \$5,500 and /or 12 months imprisonment apply for:**



### Field Day Snapshots Fire Brigade exhibition



- \* not getting a fire permit during the Bush Fire Danger Period
- \* not observing all the conditions on a fire permit
- \* failing to notify the RFS and neighbours 24 hours in advance of lighting a fire all year round
- \* failing to supervise the fire at all times
- \* lighting a fire that is likely to be dangerous to any building without a fire permit or given notice.

### Penalties of up to \$110,000 and or 5 years imprisonment apply for:

- \* a person without lawful authority who sets a fire to land or property of another person
- \* the owner or occupier of land who permits a fire to escape from that land in circumstances likely to cause injury or damage

For more information check the RFS website [www.rfs.nsw.gov.au](http://www.rfs.nsw.gov.au), or call Southern Tablelands Zone 62263100

General Meeting 27<sup>th</sup> January 2007, 7:30pm

The Brigade would like to thank all those who have helped us over the last 12 months.  
We wish everyone a safe and Merry Christmas and a Happy New Year.

Till then **please drive carefully** and take care, see you all at the next meeting

**All welcome.**

Ellen Sylvester - Secretary

[www.windellama.com.au](http://www.windellama.com.au)



# ROVERS RETREAT

*PREMIUM BOARDING KENNELS*



**OPENING DECEMBER 2006**

**LIMITED SPACES STILL AVAILABLE FOR  
CHRISTMAS HOLIDAYS**

**"UPSON DOWNS"  
OALLEN FORD**

**TELEPHONE 4844 5449**

**EMAIL [UPSONDOWNS@BIGPOND.COM](mailto:UPSONDOWNS@BIGPOND.COM)**



## TARAGO SERVICE CENTRE

**MVRIC LICENCE No.27764 UHF CHANNEL 20**

**Phone 02 48494421 A/H 48445188**



**OPEN 7 DAYS**

**Monday to Friday 8am to 5pm**

**Weekends 9am to 4pm (Mechanic not avail)**

**Fuel / All Mechanical Repairs  
Registration Inspections/CTP Greenslips  
Log Book Servicing  
Elgas LPG Agent  
Tyre Sales & Repairs  
Batteries & Ice  
Breakdown Call Service  
Community Postal Agency  
Hot Food, Drinks, Ice-Cream  
Eftpos, ATM & Starcard facilities**



[www.dirtdogmotorcycles.com](http://www.dirtdogmotorcycles.com)

**OFF ROAD MOTOR CYCLE SALES  
(from \$1195.00)**

**CREDIT CARDS WELCOME**





## START PLANNING YOUR FARM FORESTRY ENTERPRISE NOW



So you want to get started in a farm forestry enterprise? Start planning now, because you need to remember, half the job is done once you start. If you want to plant either natives or pines in 2007, the planning phase should start now. Have you selected the block you want to plant, how much area is involved, and have you thought about site preparation and ordering the plants?

The site that you have selected for planting should be heavily grazed now. This will assist in removing the weedy growth, and make site preparation easier and improve the quality of the ripping. If the area you wish to establish under plantation exceeds 30 hectares, then you will need to get approval under the Plantations and Re-forestation Act 1999. This is obtained through the Department of Natural Resources. You are entitled to establish up to 30 hectares of plantations under the Act as exempt farm forestry, providing that no other state regulations are breached. Approval is not required from your local government agency.

Native seedlings need to be ordered around December. Large orders of native seedlings need to be made well in advance, as nurseries start sowing seedlings in summer. They will need to know how many to raise, especially if you require larger numbers, or whether you require some rarer species or particular provenances of certain seedlings, eg, *Acacia implexa* from Gunning.

Pine seedlings may be ordered from the Southern Tablelands Farm Forestry Network (STFFN) around April. Order details appear in the STFFN Autumn newsletter, with a range of pickup dates in July and August.

Site preparation should be carried out between December and March, preferably when there is some soil moisture. The best site preparation is ripping and mounding, with the rip lines following the contour. This allows time for the rip lines to settle before planting, and the contour ripping allows for good moisture retention.

Pre plant weed control is desirable, and a knock down herbicide such as Glyphosate (Roundup) is best. A residual herbicide, such as Simazine, may also be added to the mixture, but you should seek advice.

Planting occurs in winter for pines, and early spring for natives. Planting is a big task, so if you are undertaking planting yourself, you need to work out daily productivity rates and order delivery of seedlings accordingly. STFFN can arrange professional planting contractors to carry out the job.

Fertilising of both pines and natives needs to be carried out mid spring. Young trees require both Nitrogen and Phosphorus, and an application of 150 grams per tree is required.

Does all of this sound too much for you?

STFFN is a Private Forestry Development Committee that receives both Australian and NSW government funding to assist in the facilitation of commercial private forestry in the Southern Tablelands region.

If you require advice or assistance, please contact STFFN at [stffn@bigpond.com](mailto:stffn@bigpond.com), phone (0412) 195 499 or visit our website at [www.stffn.org.au](http://www.stffn.org.au).

STFFN has extension officers who will visit your property, offer advice on native species or pines, and can assist with sourcing contractors for site preparation, planting, seedling supply, fertilising and weed control.

You may become a member of STFFN (membership is free) and members receive quarterly newsletters, and attend field days on various aspects of farm forestry.



Monster celebration snapshots





## Johnno's Corner

**Open 8am to 5pm  
Thurs to Tues  
CLOSED WEDNESDAY**

**Hamburgers - Fish & Chips  
Ice in Bags Only - LP Gas Refills  
For service & Information call in at  
4239 Oallen Ford Rd, Bungonia  
Or phone 4844 5456**

## GREEN PRODUCTIVE PASTURES

*Do you want them?*

We are a one stop shop for all your pasture and crop needs.

We offer the following services:

1. **Land Clearing** - removal of existing vegetation including stick raking
2. **Soil testing** – to work out what your soil needs
3. **Lime and fertilizer spreading** – Low acidity & low nutrients restrict your plants' ability to produce
4. **Ploughing**
5. **Crop and pasture sowing**
6. **Spraying** - both boom and spot spraying
7. **Slashing**
8. **No job too big or too small.** Helpful advice and obligation free quotes

Modern reliable machinery

Reliable and experienced operators

## **PJ Brooks Farming Services**

**Peter Brooks** B.App Science (Agriculture)

(02) 4849 4663

0429 490 390

[www.princesspastoral.com.au](http://www.princesspastoral.com.au)