

Windellama School P & C

**PC's last meeting for 2009 to be held
on Monday 7 December**

Everyone welcome

Congratulations and thanks to all who assisted with the P&C activities at the field day. Despite early logistical worries (such as organising a cow), the Cow Pat Competition was a great success and the children's activities were nearly twice as busy as in previous years.

With only a few weeks remaining in the school year, the only fundraising activity remaining in the P&C calendar is the traditional raffle of a Christmas hamper. Parents and carers, we are seeking donations of suitable celebratory Christmas goods to create a festive prize. Raffle tickets will be available via the school and can be purchased any time before the draw which will be held during the evening on presentation night, Monday 14 December.

May everyone have a safe and happy holiday. See you in 2010.



Windellama Small Farms Field Day

Our 16th field day is over. Saturday started out misty and overcast as the band of workers erected the last of the tents. Some of the exhibitors arrived the night before so breakfast started early. It was great to see the oval start to fill up. The array of colours as exhibitors readied their sites. Wayne Ryder and his band made pleasant music all day. The childrens activity centre was in full swing with many young ones coming away with artfully decorated faces and supervised by Parents and teachers from Windellama Public School and sponsored by Country Energy. Throughout the day there were talks by vet Dr Michael Archinal, the Corrective Services K9 Unit were put through their paces. Effi milking her goats drew a crowd as did the straw bale demonstrations. The line at the food shed never seemed to get any shorter. The cow pat competition of course had people hanging around to see which square the calf would honour. Ray Carey had the lucky

Square. The people through the gate was the best attendance for some years. Thank you to all the our helpers and exhibitors and especially the people who came to see what was on offer and enjoyed the sun blessed day.

Raffle Winners 1 st	Lloyd Turner	Windellama
2 nd	Judy Yates	Tarago
3 rd	R Chambers	Goulburn

Lucky Gate 1 st	W Wilkes	Middle Arm
	Phil Roberts	Nerriga

Cow Pat Competition	Ray Carey
---------------------	-----------

Exhibitors Prizes Donated By The Land

1 st	Angus Constructions	Straw Bales
2 nd	Dr Drum	Drum Furniture
3 rd	Kim's Chillis	Olives and Sauces

See pictures pages 13

ROVERS RETREAT

PREMIUM BOARDING KENNELS



HUGE INDIVIDUAL KENNELS

VERY COMPETITIVE RATES

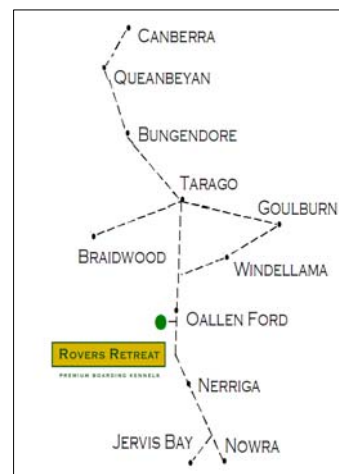
Free Daily Exercise & Playtime

RURAL SETTING ON 100 ACRES

COLLECTION & DELIVERY



"UPSON DOWNS"
OALLEN FORD
NSW 2622



www.roversretreat.com.au

02 4844 5449

Windellama Country Markets



10am to 2pm
Sunday
20th December
At Windellama
Hall

Now with
fresh Fruit & Vegies

All enquiries to
Bob Shaw
on 4844 5001



Windellama's '09 Small Farm Field Day



BARBEQUES GALORE

A lot of places are selling outdoor products, like Barbeques.
The difference is WE can tell you how to use them!

**LARGE RANGE. GREAT PRICES.
FRIENDLY STAFF. GREAT SERVICE.**

Huge Range of all your outdoor area needs.
We know your product and how to use it.

we know what you want...



4821 1252 or 4821 4885

388 Auburn Street, Goulburn www.barbequesgalore.com.au

**BARBEQUES
GALORE**

How do you BBQ?

Police Report

Crime:

During the month of November, reported crime in the area has decreased compared to the previous months.

Illegal hunting and shooting activities

There has been only one reported incident of hunting and shooting activities around the Cullulla Road area for the month of November.

If you are experiencing these activities in your area, please let me know so I can target the problem.

Traffic:

This is an area of concern for me this time of the year. Whilst the amount of motor vehicle accidents are down in the sector, an increased presence by police will be made around back roads and that of nearby licensed premises over the festive months ahead. Random breath testing will be increased over the coming months, so please don't drink and drive and enjoy your holiday period.

A Lake Bathurst man was charged during November with driving an unregistered and uninsured motor vehicle as well as driving as an unaccompanied learner. The male has had his licence suspended and is due to appear in Goulburn Local Court on the 16th of December 2009 for the offences.

On this note, let me take this opportunity to remind all those who are supervising a learner driver that you still have to be under the alcohol limit yourself to supervise a learner driver.

Remember the new legislation below which commenced on the 1st of July 2009:

The new Act creates new offences under section 30 (1) and section 30 (2). Section 30 (1) provides an offence now for a person to smoke in a motor vehicle on a road or road related area if there is a person under the age of 16 present in the vehicle. Section 30 (2) provides the driver of a motor vehicle in which a person is smoking in contravention of section 30(1) is also guilty of an offence.

So in short, if someone in the vehicle is smoking and there is a person under the age of 16 also present in the vehicle, that person and the driver are both guilty of an offence.

Theft

During November I have already started taking reports of minor damage to "weekenders" in the area. I am hoping I can target as many weekenders in the area over the coming holidays.

If you own a property in the area and only use it as a "weekender", and you haven't completed and returned your property information form and you

are not intending to use your property over the holiday period, please complete it and return it to me ASAP, so I know where the un attended properties are and I will make static patrols around your location over the holiday period in an attempt to keep the property theft down during this time.

Please be careful with you properties over the coming months for theft and break and enters, as this time of the year can see an increase in these offences. Remember the simple things to prevent theft, stay alert of anything suspicious around your neighbourhood, watch out for your neighbours and remove items from view, especially in vehicles as most offenders are opportunist and will offend if the opportunity arises.

Licensed Premises

Licensed premises in the area are going to be a high focus over the coming holiday period. If you are one to drink and drive, expect to be stopped and breath tested. Alcohol related offences will be targeted with a zero tolerance approach. For licensed establishments in the area I will be also be targeting under age drinking so please be proactive with the checking of identities if you are suspicious of a customers age.

Community Notice:

If you require a Justice of the peace I can now assist you, as I have just been appointed as a JP. So, please feel free to stop in and seek my assistance if it's required.

Public Interest:

I thank all those who have taken the time to return their rural property / farm information sheets to the station. If you are yet to complete yours, it would be most appreciated if you could complete and return the form as there are still a lot to be received.

If you require a property inspection form, please contact the station for one to be sent out to you, or you can pick one up from the station during work hours.

Also, a state wide firearms audit has commenced. The audit is similar to that of a few years ago. So, please make sure your licence is current and has not expired and your storage cabinet complies with the standards, because when I get your file I will be contacting you to arrange a time and date to inspect your firearms and storage cabinet.

I would like to take this opportunity to thank all my local residents for their on going support throughout the year and wish you and your families a Merry Christmas and a safe and happy new year.

Regards
Brad Carey, Senior Constable,
Tarago Police Station, 48494411

***Need a Doctor
today?***

***Goldsmith Street
Surgery***

Call 48217445

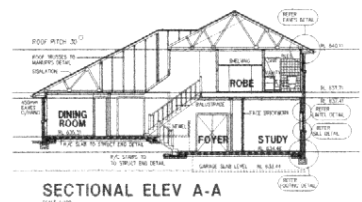
(on Fridays call before 10am)

***We are open until 7pm
Mon-Thurs***

ACOM DESIGN

PO Box 806,
Goulburn 2580

Yarralla,
Oallen Ford Rd
Bungonia 2580



Robert C Everingham

Building Designer & Draftsman

New Homes, Alterations & Additions
Duplex, Villa, Townhouse Developments
Rural, Commercial, Industrial Buildings
Free Quotes - Competitive Rates - Prompt Service
Energy Efficient (SEDA), Eng Dwgs: Mech, Struct, HVAC

TEL 4844 4321

MOBILE 0417 682 022

FAX 4844 4323

EMAIL acomdesign@bigpond.com.au



MEMBER
STANDARDS AUSTRALIA



MEMBER
BUILDING
DESIGNERS
ASSOCIATION
OF NEW SOUTH WALES INCORP

Monero I.T. Training

Stuart Mawbey, Tutor, Technician.

**Qualified and competent, affordable rates,
pensioner discounts.**

**University and High School English Tutor,
police clearance, excellent results.**

Software trainer and printer repairs

**Will travel to Windellama and Tarago for
Appointments**

**Welder- 10 Years cattle farming experience
e: monero@yahoo.com Mob:0488 074 869**

BOB RUDD FUNERALS



**73 Reynolds Street
Goulburn NSW 2580**

Phone 4822 4400

**Your Local Family Owned
Funeral Directors**



David Rudd & his sister Shane

**WE WORK HARD TO GAIN YOUR
CONFIDENCE & TRUST**

Introducing our New Chapel with on sight parking
Pre-paid funerals available as well as pre-arranged funerals.

Just ring and we will come to you

**Servicing Windellama, Goulburn, Mulwaree Shire, Marulan,
Gundaroo, Braidwood, Gunning, Dalton, Tallong, Bungonia,
Taralga, Yass, Braidwood**

Monumental work - Just ring us for a quote

We welcome your enquiries.

**** SUREPLAN as little as a \$1 a week Funeral Fund****

Agent - Trish Cunningham

Marulan, Tallong & Bungonia - Ph. 0432 253 057

Contact our office 4822 4400

Southern Districts Piano Service

**Pianos • Pianolas • Tuning • Repairs
Re-polishing • Removals**

Graham Price

02 4844 5329

Alpacas - Anecdotes & Advice

Joy E Allenby-Acuna

La Granja Holistic Alpacas

Firstly I must say how much I enjoyed the Field day, met some very pleasant and amazing people. I also would like to congratulate the organizers upon a very well run day. The hall and the toilets were impeccably clean.

To continue La Granja adventures, by the way so many people told me how much they enjoy my ramblings. Chuchi has still not had her baby, she is very irritable and it may be late or she may have a retained corpus luteum. We will wait well over the year and then after shearing, at the beginning of December will put her to the back with the others. She will have to have an injection to clear the problem. The slippery elm, electrolytes and pomegranate juice have cleared her runny tummy problem.

Mbale has stopped eating grass and therefore is not getting seeds in his throat. Toya, the old Rottweiler, 11 years is very stiff and because she has had two cruceate ligament operations her back legs are very weak, but we keep her on glucosomate and devils claw and give her anti inflammatory if she is in too much pain.

We ended up with fourteen chicks and two goslings, no ducklings so far, although mother duck has been sitting. We have one more chicken to hatch and they are all in the civilized garden in separate night cages and are let out during the day. We find the chickens, third generation here are getting back their cluckiness ,which is bred out of them commercially. The geese are in the garden too ,as you have to be careful because of the crows. Yesterday I saw an interesting event. The male goose was just outside the sun room, hissing and spreading his wings very wide. He

was with his two wives and the two goslings. On the ground beside him was a large brown snake, going flat and trying to go away rather than attacking back. Must have been because of the goslings because I have seen the geese right beside a snake, doing nothing.

Needless to say we are very aware where we walk and keep a strict eye on the three dogs. We saw four snakes on Sunday, one in the feed shed, one in the duck run and two in the garden. I suppose they are more in evidence as it has suddenly turned hot. The alpacas are getting a little hot but stay in the shade or go for a paddle in the creek and early December is early enough to shear, as we can have a cold snap yet. It is so green that they do not require so much mix.

By the way, touch wood, we have never had an Alpaca bitten by a snake, we do leave their lower leg fleece on though ,to help prevent this. I do believe that when people think they have lost one to a snake it is often another cause.

www.lagranjaholisticalpacas.com.au Till next time. Namaste Joy Allenby-Acuna.



POULTRY AUCTION

**SUNDAY 24TH
JANUARY 2010**

**Poultry Pavilion
Goulburn Showground
Braidwood Rd Goulburn**

**Please note time change:
PENNING 7 AM TO 9.00 AM**

Please note sick or injured birds (including those with scaly leg mite) will not be accepted. Geese will only be accepted if brought in their own saleable cage or boxes

AUCTION STARTS 9.30 AM.

FOR INFORMATION

Phone **BOB ANDREWS**

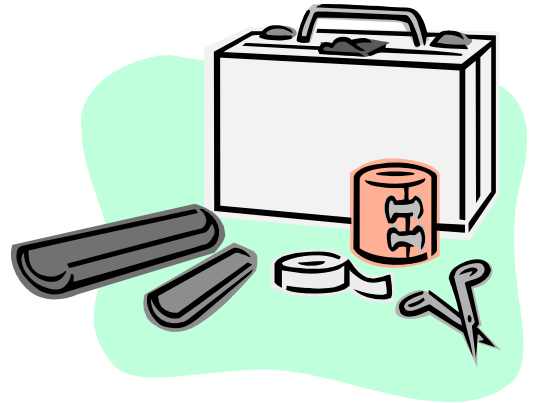


S.E.S.

WINDELLAMA C.F.R.

FIRST AID NEWS

The SES Windellama CFR (Community First Response) first aid unit is looking for new members to help the existing team members to cover our area; we cover some 850 square klm's. So if anyone has a senior First Aid Certificate and would like to join this elite team and go further in first aid you will get the required training to our level and it is **FREE**.



We train every Wednesday at SES Goulburn local headquarters 6pm to 9pm (approx). With our own shed and training room coming in 6 months with modern facilities.

Now is the time to join, we are on call 24hrs 365 days per year.

If you can give a few hours during the week or the month.

We also cover first aid at other sporting venues and functions i.e. Polocrosse, Trinity rugby, Pauline Fathers, Show societies and Goulburn Cycle Club to name just a few. It's a great way to help others in our community and you will enjoy being part of an elite team who care for the community when people need us in a time of need.

To Contact us Phone

Kevin 4844 7143

Graeme ... 4844 5506

Noel..... 4844 5407

Windellama Public School News

email: windellama-p.school@det.nsw.edu.au

Website: www.windellama-p.schools.nsw.edu.au

Phone: 4844 5130

Fax: 4844 5265



WINDELLAMA CUP DAY

The annual Windellama Cup day events were a highlight of the week. Students made toy cars, flipping frogs and paper planes and raced them on a fine but windy day.

Kynan from year 1 was the Windy Cup winner with his jet speed toy car!

BERRY CAMP

Students from the 3-6 class had a great week away at Berry Sport & Rec camp. They climbed and ran and paddled and danced and played the week away. They also joined up with kids from 10 other small schools and some friendships were forged.

NEW BUILDINGS

Everyone will notice in the coming weeks a hive of activity at the school. A new multi-purpose room will be constructed to the left of the main class room as a part of the Federal Govt's Building Education Revolution. The room will be used for assemblies, performing arts, group work, P&C meetings and community use. A new sports shed will be constructed soon thanks to the P&C and a Mulwarree Trust grant. The painters have just finished sprucing up our buildings with a much needed new coat of paint.

SPAC EXPO

On 18 November all students attended a combined public schools activity day called SPAC Expo which stands for **SP**ort **And** **C**ulture Expo. Lots of fun activities were enjoyed by all.

ALL WELCOME

Our **annual presentation night** will be held on **MONDAY 14 DECEMBER**. Dinner will begin at 6pm and the formal part of the evening commences at around 6.30pm. Community members are welcome to attend and witness our end-of-year finale. RSVP on 48445130 before 9 Dec with numbers wishing to attend. Meat, bread, supper provided, BYO salad.

UPCOMING EVENTS IN TERM 4

SPACE EXPO: Wed 18 Nov

Afternoon Show: Wed 25 Nov

Full Day Kinder Orientation: Fri 4 Dec

Christmas Carols for Retirement Villages: 9 Dec

Afternoon Show : Thurs 10 Dec

Presentation Night: Monday 14 Dec

Day at the Movies: Tuesday 15 Dec

Last Day for students: Wed 16 Dec

Last Day for staff: Thurs 17 Dec

First Day back for students in 2010: Thurs 28 Jan



WINDELLAMA ART, CRAFT AND FLOWER SHOW

6TH FEBRUARY 2010

Entry forms will be available at the Hall on Friday evening and Saturday morning.

Enquiries: Di Andrews - 4844 5127 or Pam Williams - 4844 5194.

The entry fee for each class is 40 cents. First prize = \$2.00 and Second prize = \$1.00 Special prizes have been donated and will be awarded in some sections. The Judge's decisions will be final.

Entries will be received between 5.00pm and 8.00pm on Friday and 8.00am and 9.30am on Saturday. Judging will commence at 10.00am sharp, the Hall will re-open at 12.00pm.

Exhibitors please note: as no protective wire will be used, exhibitors enter at their own risk. Every care will be taken but no responsibility will be accepted. All entries must be removed from the Hall between 3.00pm and 3.30pm on Saturday. Entry forms must be produced before items can be collected.

A Perpetual Trophy will be awarded to the overall winner of all events in the Craft and Flower Show. A point system will operate for this award, whereby the first and second place-getters in every section will accrue their points for the day. This trophy has been kindly donated by Mrs Iris Roberts.

FLOWER SHOW

Please note: Champion rose and most outstanding arrangement will both be awarded a ribbon. Maximum exhibit space allocation is 60cm (2ft). All arrangements must be self-supporting.

Enquiries: Di Andrews 4844 5127.

Open Section

1. Red & White arrangement - own foliage
2. Arrangement using weathered wood - free expression
3. Arrangement in a teapot accompanied by a lid
4. Arrangement using Australian Native flowers & foliage - free expression
5. Arrangement using glass - free expression
6. Arrangement using flowers & fruit - free expression
7. Float bowl (flowers must be floating)
8. Wine & Roses - free expression
9. Foliage arrangement
10. Miniature garden - free expression

Dried and Artificial

1. Dried arrangement
2. Arrangement using silk or artificial flowers - free expression

Cut Flowers

1. Branch of any flowering shrub in a vase or other container
2. One red rose - hybrid tea
3. One pink rose - hybrid tea
4. One yellow rose - any variety
5. One rose other than red, pink or yellow - hybrid tea
6. Any rose in full bloom
7. Any rose in three stages
8. One cut of any rose not hybrid tea
9. One cut of miniature rose
10. Any cut of flower not mentioned

Plants Growing in Containers

1. Foliage plant in container
2. Flowering plant in container
3. Fern plant in container
4. Succulents in containers

Children's Open Section

Infants

1. Arrangement in a jar
2. Vegetable and/or fruit figure

Primary

1. Arrangement in a jar
2. Vegetable and/or fruit figure

Fruit & Vegetable Section

1. 4 Eggs
2. 4 stalks of Rhubarb
3. 4 stalks of Silverbeet
4. 4 Potatoes
5. 4 Tomatoes
6. 4 Carrots
7. Collection of any 4 Stone Fruit
8. Collection of any 4 Fruit (not Stone)