

Horse-ing Around

By Sandy Wooderson



Part 6 - Pony Club

Pony Club? Do we join or is it a waste of time?

Well it all depends on how far your child wants to go with their riding.

Pony Club offers a wide range of disciplines and most of our country's best riders started in Pony Club. It is a great foundation for horsemanship, teamwork and personal presentation.

Pony Club has been active in Australia since 1952. Goulburn formed on the 20th June, 1957.

You need to have a suitable pony or horse and gear. This can be a lease or ownership.

Transport for your pony and an enthusiastic child who wants to meet other children with ponies and learn the fundamentals of horsemanship.

Pony Club starts back in Jan/Feb 07, our area is zone 27 and the clubs are Goulburn, Tarago, Marulan, Taralga, Crookwell, Breadalbane, Braidwood, and Gunning.

Each club offer the Pony Club rules and format, but have their own program each month. Each club have a uniform and look very smart at gymkhanas in their troop lines.

There is a yearly camp and a zone yearly camp - Gymkhanas, competitions in dressage, show jumping, eventing, sporting, show riding, and camp drafting.

Most clubs have trail rides throughout the year and many more fun activities for beginner and advanced riders.

It's a very family involved atmosphere at Pony Club and parents are encouraged to help with rally days.

I belong to Goulburn club, our rally days are once a month (second Sunday) and start with a gear check. This ensures your child is using safe and well fitting equipment. Visiting instructors give lessons in jumping and dressage throughout the year and selected riders are invited to ride at the royal shows in pairs and teams of four and state Pony Club competitions in all disciplines.

For further information and how to enrol ring Jacki Waugh on 0428298157

Excerpt taken from Goulburn Post (18-05-1928)

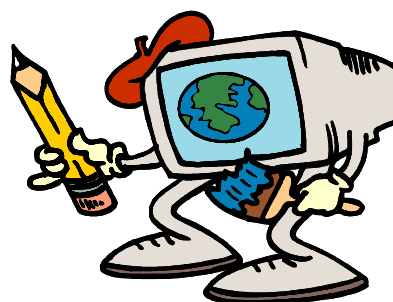
Cullula - We have experienced very rough weather for the last week, west to southerly winds have dried up the ground considerably, but so far frosts have done very little damage. Crops are very forward this season, although rain is now needed for their benefit. Stock owners are no longer troubled with the green fly, which caused them a considerable loss in lambs.

The Cullula Tennis Club has an exceptionally good membership this year, but owing to the expense of tournaments and matches, funds are running low.

Little Thora Steadfut is home again after a period of twelve months in the hospital in which time she underwent eight operations. Mrs. Steadfut is taking her down to the coast for a holiday.

Miss Isabella Roberts is home after a short illness in St. John's Hospital, and hopes to resume nursing in a few weeks.

From Marie Elliott



Windellama Community Website Stats

The figures must be right!

Our Windellama Website is busier than ever!

For December '06	-	11,332 hits
For January '07 (up to 27th)	-	12,467 hits

David informs us that our website is humming along nicely and will probably be busier once everyone returns from their holidays.

Just Trivia Night - 10th February



Nirvalley Homestead Nursery

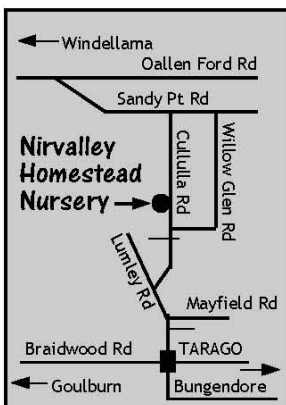
629 Cullulla Road, Tarago • 4849 4481

**Great Plants
Great Prices**

Peter & Caroline Campbell • Gift Vouchers available
Open Friday, Saturday, Sunday or phone any time

**We stock quality plants and trees,
acclimatised to local conditions.**

- Windbreak and hedging plants
- Native and exotic shrubs
- Advanced trees
- Tube stock ● Farm trees



**Call in when our sign is out
on Cullulla Road**

SHEPHERD'S HILL NURSERY

321 George St, Marulan

Ph 4841 1404 Fax: 4841 1454

Mobile: 0413 047 105

Look for the house on the hill

**For all your garden needs &
acclimatised plants**

Potted colour, Seedlings, Bulbs, Fruit trees, Ornamental trees, Windbreakers, Shrubs and more
Potting Mixes & quality soils & mulches.
Pots, Statues & Gifts

Gift vouchers & Eftpos available

We are members of NGINA
Nursery & Garden Industry NSW & ACT



Rusty Balls

Aussie natural soaps & oils

- Lemon scented tea tree
- Lemon Myrtle
- Tea Tree
- Broadleaf Peppermint Gum
- Strawberry Gum
- Eucalyptus Radiata

Natural Bush Soaps

Phone 4844 5087

sales@naturalsoaps.com.au

www.naturalsoaps.com.au

Agents for Tallawang Plantation



In Your Garden
From Irene Turner 

The welcome rain this month was most needed. In this hot weather mulch and deep water when you can.
Start planning your vegetables for the winter season. Planting of cabbages, cauliflowers, broccoli and brussel sprouts now will get them moving before the cold weather starts. Carrots, parsnips, celery, kohlrabi, lettuce, parsley, radish and turnips can also go in now.
Keep up the water to pumpkins, zucchini and squashes.

Flowers:

Plant now seedlings of pansies, violas, stocks, poppies and alyssums (sweet Alice).
Seedlings of calendula, carnations, polyanthus, larkspur, linaria, snapdragon, statice and verbena can also go in now. A light pruning of roses now will give a better Autumn display. They will also benefit from a feed of a rose fertilizer or old animal manure.
You can purchase your spring bulbs from this month, but if you plant when it is too hot, the bulbs can dry out. Wait until the weather is cooler before planting; and place Tulip bulbs in the crisper of the fridge for 1 month before planting.



Plant of the Month:

Abelia: Shrub genus from Mexico and China. Abelias are a fragrant shrub with bell shape flowers; white or pink, flowering in Summer. This plant grows fast to a height of 1 – 2 metres.
All species may be planted out in Autumn. It can be pruned to make a hedge; can be propagated from a summer cutting; prune in Winter; feed in Spring.
Abelia's belong to the Honeysuckle family; a good hardy shrub for our area.

Herb of the Month:

Alliums (*Liliaceae*)
This species is one of the most popular culinary plants in the onion family. Alliums also have marvelous health giving properties; the stronger the smell, the more effective their healing powers.



Garlic is a major flavouring in many cuisines.
Chives were recorded 4,000 years ago in China. Chinese chives have a garlic flavour. The Chinese use the flower bud as a garnish, and the stem for stir fries, soups, etc.
Growing chives around your roses help to keep the aphids away, also a deterrent for apple scab and mildew.

Another important allium is the Welsh onion. I grow the tree onion / Egyptian onion. It plants itself after flowering and you always have a plentiful supply to use in salads and stir fries.

Grow all alliums in a sunny rich well-drained soil. Propagate the offsets or divide the bulbs in Autumn or Spring.
Plant garlic cloves 4 cm deep or sow seed in Spring. Divide and replant clumps every 3-4 years. Use both leaves and bulbs in cooking and salads.
Chives – infuse as a spray for aphids, apple scab and mildew.
Garlic spray – use for potato blight.

All alliums contain some iron and vitamins and are a mild antibiotic.
Sprinkle chives on food to stimulate appetite and promote digestion.
Garlic – use as an antibiotic to cleanse blood, reduce blood pressure, take as protection against common colds, worms, dysentery and typhoid.



 **Willow Glen Road Gardeners**

Next get together is at the home of

Warren & Judy Yates
10am Tuesday 6th February
866 Willow Glen Road

Please bring some plants or cuttings to share, and spend a morning with other gardeners.

For more info make your enquiries with Warren Yates on 4844 5350.

D & K FABRICATIONS

General Fabrication
Wrought Iron
Toolboxes
Welding Repairs

Daniel McGaw
85 Knox Street, Goulburn

4844 5098

0428 254 052

mcgaw1@bigpond.com

GJ and AT CASSIDY

Farm Services

For all your small farm needs including:

- * New Fences
- * Weed Spraying
- * Repairs to existing fences
- * Mustering
- * Stockyard design and erection
- * Stock Work
- * Lamb Marking

**Call Butch on 0438 818815
for a quote**

LOCAL ELECTRICAL CONTRACTOR

Lic. No. 174303C

24 Hour prompt service - Free Quotes

RON WENBAN

Mob: 0428 445259

Ph: 4844 5259

Fax: 4844 5617

*Rural *Domestic *Industrial *Commercial

*Test & Tag tools & appliances

GOULBURN & DISTRICTS RURAL SERVICES

**Weed Spraying - Spot & boom
Four wheeler for small/steep areas**

Licensed & fully insured

Local family business

Reliable

Good rates

David Bradley

4844 4219 or 0428 417 902

Advancing Burrinjuck

Public education is one of the most important functions of any State Government. A good public education system is a strong investment in the future of our State. The unnecessary and unwarranted downgrading of Greenethorpe Public School near Young to a one teacher school however proves that the State Labor government is failing to properly support public education especially in rural NSW.

Across NSW schools face a \$114 million maintenance backlog and maintenance expenditure was cut by State Labor by more than \$20 million between 2004/05 and 2005/06. The primary student/teacher ratio of 16.7:1 is the worst in Australia and many government schoolteachers are not receiving adequate mentoring and support.

The Nationals Investing in Country Education policy will lower the cut-off point for single teacher schools to a minimum enrolment of 20 from State Labors inflexible 25. The Nationals understand the importance of small schools to rural communities and will introduce a flexible system that takes local conditions into account when allocating teachers to small schools.

The Nationals will also install flashing lights at all school crossing zones, invest \$362 million over four years to significantly boost affordability and access to NSW pre-schools for families, support the NSW Institute of Teachers, implement an assets register to fix the maintenance backlog and implement a Greener Playgrounds program to link community environmental mentors with schools interested in greening their playground environments.

CountryLink Pensioner Booking Fee

Labors unfair Countrylink pensioner booking fee was in the spotlight again recently. No doubt, thousands of pensioners in rural NSW felt the sting of the fee while travelling over the Christmas/New Year holiday period. Since its introduction in March 2006, the 15%

Freecall: 1800 00 2580

Katrina Hodgkinson MP

State Member for Burrinjuck

For enquiries about State matters or to arrange an interview with me, please phone the above number or 6226 3311, fax 6226 3345 or write to me at
PO Box 600 Yass NSW 2582
email the Burrinjuck Electorate Office at Burrinjuck@parliament.nsw.gov.au or visit www.burrinjuck.com.



booking fee has seen State Labor pocket \$2.6 million from pensioners, while 53,000 fewer senior citizens are using CountryLink as a result of what is simply another tax on pensioners.

This is simply unacceptable. In government The Nationals will scrap this booking fee tax and encourage pensioners to once again take up using CountryLink rail services in NSW.

Murrumbidgee Catchment Management Authority Incentive Funding

The Murrumbidgee Catchment Management Authority (MCMA) is currently providing incentive funding and general support to landholders to assist them to manage their land for sustainable production and environmental benefit. I have been informed that landholders already working with the MCMA are finding that these incentive packages are just as relevant in the current drought conditions as at any other time.

Funding is available through partnerships such as National Action Plan for Salinity and Water Quality, National Heritage Trust and National Landcare Programs. More information can be obtained from my office on 6226 3311, freecall 1800 002580, fax 6226 3345 or email burrinjuck@parliament.nsw.gov.au Or by calling the MCMA head Office on 6932 3232.

Council Supports Local Tourism Events



Goulburn will continue to provide premier tourism events in 2007 thanks to funding approval granted at the November Council meeting. Goulburn Mulwaree Council has approved funding for several local tourism events at recent meetings, furthering its commitment to an exciting events calendar. Council's Tourism Events Officer, Jenny Falconer, said the funding would encourage tourists to come back to Goulburn.

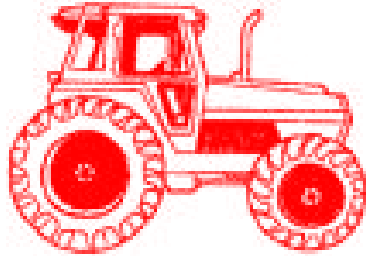
"Goulburn Mulwaree Council encourages the development and expansion of tourism events to create a vibrant events calendar for visitors and local residents," she said.

Council's Tourism Events Funding Policy provides for non-recurrent financial assistance for tourism events run by community groups and organisations.

For more information please contact Council's Tourism Events Officer, Jenny Falconer by phoning the Goulburn Visitor Information Centre on 4823 4492.

www.windellama.com.au

**A.F. & M.R. DAVEY
TRACTOR &
MACHINERY REPAIRS**



"IF IN DOUBT, GIVE ARTHUR A SHOUT"

ARTHUR DAVEY

**PH: 4822 8441
MOB: 0409 651 517**

"Maxwell Park"
379 Inverary Road, Bungonia

Australian Deer Association



A.C.T. & Southern Regions Branch

The laws regarding deer have changed in NSW!
Our Branch is seeking to contact local landholders with the view to establishing property-based game management plans.
Deer on your property is now a legal game resource. Contact us to find out the benefits and potential income that you can derive from such plans. Our members are licensed, trained, responsible hunters and covered by a \$10,000,000 public liability insurance.
Write to us to PO Box 299, Deakin West, A.C.T. 2600
or ring 0411140-337



BOBCAT HIRE

**863 BOBCAT
with attachments
Experienced Operator**

**David Lavender
Quialigo**

**Phone 4844 7078
Mobile 0418 767 067**



ArTheAD

Bob & Sonja Millis

- Fine Art Material
- Framing & Materials
- Digital Printing & Scanning
- Photo Restoration
- Art Classes & Workshops
- Gallery Sales
- Art Books, Cards, Laminating

**Internet Sales Australia wide
www.arthead.com.au**

**358 Auburn St
Ph 4822 6641 Fax 4822 6631
Mob 0417 266 904**

Goulburn Regional Art Gallery

Goulburn Civic Centre
Cnr. Bourke & Church Sts, Goulburn
Ph: 4823 4443

27 Jan.–17 Feb.

InTech 2007 — exhibition of major works by industrial technology HSC students, Admission free.

Goulburn & District Arts & Craft Centre

Corner Verner & Bourke Streets, Goulburn
Phone: (02) 4822 7889
Open 10am to 4pm DAILY

18 Jan.–21 Feb.

Artist of the Month — exhibition of silk items by
Enid Worthington & Maralyn Turner

22 Feb.–28 Mar.

Artist of the Month — exhibition of patchwork by
Carole Hancock

*Why is there a light on in the fridge
and not in the freezer?*

Arts and Crafts

Craft Afternoons at Windellama Hall



We meet every Tuesday from 1pm to 4pm, and all craft can be practiced.

Beginners and crafty people welcome.

For more information ring Irene on 4844 5214.

BUNGONIA QUILTERS

Meet every Monday morning
at 9am to 1pm
at Bungonia Fire Shed

If you want to learn how to patchwork come along, have a cuppa and find out what you need to bring to get you started on this addictive craft.

For enquiries phone:

Sharon Alessi 4844-5149
Cherie Jenkins 4822-4241
Sandra Williams 4844-4369

Generous Donation to Assist War Memorial

A generous donation by a visitor will help complete the World War One display at the Rocky Hill War Memorial Museum.

Roger McMahon of Tarago was 'more than pleased' to help the museum obtain a replica Australian WWI Private's Uniform with a 2nd Battalion colour patch to accompany the existing replica Turkish Private's Uniform that was donated by the Turkish Government.

After hearing the story of the Turkish uniform from volunteer Ray Waters, Mr. McMahon offered to 'go halves' with the War Memorial Museum in the purchase of the Australian uniform, and donated \$500 to the cause.

Bob Saunders, Curator of the War Memorial Museum, along with staff and volunteers, received the cheque from Mr. McMahon in December. "Mr. McMahon is to be thanked for his kind gesture," Mr. Saunders said.

The uniform is now on display at the Rocky Hill War Memorial Museum, which is open Saturdays and Sundays and both public and school holidays from 11am-3pm.

Photo Caption: From Left to Right: Museum Volunteer Ray Waters accepts a \$500 cheque and Private's Hat from Roger McMahon in front of the Australian Private's Uniform he helped purchase, Curator Bob Saunders observes the presentation.



SHOOF INTERNATIONAL
THE ANIMAL EQUIPMENT COMPANY

WE SPECIALISE IN EQUIPMENT FOR

Calving and Rearing	Dairy and Beef
Milking	Hoof Care Large Animals
Marking and Identification	Drenching and Injecting
Sheep, Alpacas, Goats and Deer	Pig Breeding
Grooming and Show	Companion Animals
Home and Farm Products	

Come and see us or Contact us for your Free Shoof Catalogue
Over 100 pages of equipment
Phone in your order, Save time & Money!

YOUR LOCAL SHOOF SHOP OUTLET

JS ENTERPRISES

9 CRAIG ST GOULBURN

PH:02 48 22 45 91 FAX:02 48 22 83 97

Mob:040 22 40 463 Email: jsent@bigpond.net.au

We also specialize in

Discount Pet and Vet Supplies
Fresh Meat Supplies, Parvo Vaccine,
Micro chipping & Hunting Equipment

APFE

Accredited Professional Feral Eradication

FREE TO THE LOCAL AREA

We can help you out with your feral animal problems,

Roos, Goats, Pigs, Foxes and Rabbits

Member of The NSW Game Council &

The Australian Pig Hunters & Doggers Association

Registered with the NSW Food Authority for Wild Game Harvesting

Public Liability Insurance

12yrs Experience

5yrs in Business

CONTACT JASON AT JS ENTERPRISES

Southern Tablelands Farm Forestry Network



SITE PREPARATION FOR FARM FORESTRY



Site preparation is very important for the survival and growth of trees, particularly in the Southern Tablelands area due to the harsher growing conditions. For the establishment of both exotic and native species plantations, or for the establishment of windbreaks that will be managed to produce a commercial tree crop, the recommended site preparation in ripping and mounding.

Ripping is carried out to create a friable, loose soil to allow easy penetration by the roots of the seedlings. When a seedling is first planted, it is rapid root development that needs to be encouraged to anchor the above ground part of the seedling, and so that the roots get down deeper to access moisture and nutrients.

Generally, ripping should be carried out to a depth of at least 600mm. To rip to this depth, a bulldozer of D6 size or bigger is required. It is also preferable that the ripper on the bulldozer have a winged tip, as this allows a wider shatter zone, and hence a greatly improved disturbed soil zone for root development of small seedlings. If the bulldozer does not have a winged tip, then a second rip line should be placed around 300mm from the first rip line to achieve the same result. Unfortunately, this adds to the cost.

Mounding is carried out after ripping, although if a powerful enough bulldozer is used, then mounding can be carried out at the same time to lower costs. Mounding creates a raised seedling bed, which improves the benefits of ripping as it increases the available topsoil for the seedlings to grow in, and has improved water retention characteristics. Control of weeds also appears to be better on the mounded rip, possibly because weed seeds are buried deeper beneath the mound.

The ripping and mounding should be carried out over summer, as the soil is drier and shatters more effectively. If the site preparation is carried out when the soil is too wet, the soil does not shatter, and the ripping effect is more like dragging a knife through butter. This also tends to leave undesirable air pockets, and the sides of the rip can be glazed and harden, making a poor zone for root development of the seedling.

Ripping and mounding should be done on the contour, or even preferably on what is known as the "keyline" method of site preparation, where the rips go down a slight gradient out of gullies to ridge lines. Keyline ripping allows better moisture distribution across the site, as it moves moisture from wetter gullies towards drier ridges. However, both keyline and contour ripping ensure maximum moisture retention for enhanced seedling growth, and also minimise the possibility of erosion.

Before commencing site preparation:

- * Check if approval is required under the Plantations and Re-forestation Act, 1999. If more than 30 hectares of either native or exotic plantations are to be established on one property, then approval is required from the Department of Natural Resources, NSW. Approval is also required if native trees or grasses are to be cleared.
- * Locate any underground services, such as telecommunications cables, water lines, power lines etc. Once damaged, these can be expensive to repair.
- * Graze the site as heavily as possible. This has the effect of making the ripping easier, and also reduces future weed competition.
- * Try and book the contractor to carry out the site preparation well in advance of the required time.

There are a number of contractors who carry out ripping and mounding. It is beneficial to talk with neighbours to see if they are planning to carry out site preparation, because if the one bulldozer can be used by several landholders, this will lower the cost of floating the bulldozer to the area.

Finally, the Southern Tablelands Farm Forestry Network is available to help with advice on all aspects of farm forestry. Have a look at our website, www.stffn.org.au, or become a member (membership is free).

Ian McArthur

Just Trivia Night - 10th February

CHURCH NEWS

Catholic Church Services

St Patrick's Church, Marulan

MASS is celebrated at 4pm. every Saturday except that preceding the 3rd. Sunday

Parish Priest: Fr. Tony Percy
Assistants: Fr. Damien Styles and Fr. Francis Kolencherry

Contact 4821 1022

St. Joseph's Church, Tarago

11th February 10.30am Mass
25th February 10.30am Holy Communion



St. Bartholomew's Anglican Church

Anglican Church Services

February

St. Mark's - Bronte
Sunday 11th 11.30am

St. Bartholomew's - Windellama
Sunday 25th 11.30am

Harvest festival celebration combined with the 76th anniversary of the Windellama Anglican Women. The service and auction of goods will be followed by a light luncheon to be held in the church grounds.

March

St. Mark's - Bronte
Sunday 11th 11.30am

St. Bartholomew's - Windellama
Sunday 25th 11.30am

Notices

AGM of the Windellama Anglican Women will be held at "Fassifern" Windellama Road Windellama Tuesday 6th February 12 pm.

Our Rector Robert Lindbeck may be contacted on 4821 3631

Although both our Churches are nominally Anglican, worshippers of all denominations are welcome at all services.

"The Lord is My Shepherd"

Goulburn Bible Baptist Church

Cnr. Mary & Hume Streets
Pastor Dennis Smith

Enquiries: 4821 9822

Sunday Worship Service: 10.30am

Sunday School: 10.30am

Prayer / Bible Meetings:
Wednesday Night 7.00pm
Sunday Afternoon 4.30pm

Youth Group:
Friday 5.30pm
Not on in school holidays

Radio Ministry:
2GCR 103.3 FM
Tuesday 6.00 – 9.00pm

Got something to tell us about ?

You can get your information into the Windellama News by either writing and depositing into the letter box at the Hall, or by emailing it to

windnews@goulburn.net.au

or by ringing Denise on 4844 5087 or Cathy on 4844 5554 and talking to them.

Community and general interest material is always appreciated.

Our Advertisers

Please consider our Advertisers when you require goods and/or services that they offer to you.

Our advertisers provide the means for the Windellama News to be published each month.

When you use them let them know you saw it in the Windellama News.

Community Contacts

Windellama Progress Association

Cathy Meehan (President) 4844 5554
 Frances Knights (Secretary) 4844 5157

Windellama Rural Fire Brigade

Lynton Roberts (Captain) 4844 5118
 Bev McGaw (Communications) 4844 5147
 Sue Roberts (Treasurer) 4844 5118

Windellama Field Day Committee

Judy Alcock (Exec Officer) 4844 5188

Windellama News

Denise Johnson (Editor) 4844 5087
 Cathy Meehan (Sec / Treas) 4844 5554

Windellama Garden Cub Inc.

Lynn Stockford (Sec / Treas) 4844 5029
 Colleen Ellis 4844 5207

Windellama Hall Country Markets

George & Annemarie Webb 4844 5038

Windellama Historical Society

Sandra Greville (Secretary) 4844 5047
 Joanna Croker 4844 5125

Windellama Landcare

Mick Ryan (President) 4844 5012
 Shirley Cornish (Secretary) 4844 5101

Windellama School P&C

Kelly Green (President) 4844 5563
 Heather Caulfield (Secretary) 4844 5120

Nerriga Landcare

Di Roberts (President) 4844 5344
 Helen Rolland (Secretary) 9555 8676

Nerriga Rural Fire Brigade

John Rolfe (Captain) 4845 9160
 Justin Parr (Snr. Deputy Captain) 4845 9129
 Marie Kennedy 4845 9126

Jacqua Creek Landcare

Sue Armstrong (Secretary) 4844 4364
 Ken Moran (Chair) 4844 4234

Wires (wildlife rescue)

Marian Hardy 4844 5273
 Southern Tablelands WIRES 4822 3888

Community Health Goulburn

4827 3913

Community Transport

4823 4499

Justice of the Peace

Linda Shannon 0414 275 873

**FOR ALL FIRE
OR EMERGENCIES
PHONE
000**




Important Phone Numbers

Rural Fire Brigade

Windellama	Lynton Roberts	4844 5118
Tarago	Des Kingston	4849 4503
Taylor's Ck.	D Elward	4849 4240
Mount Fairy	F. Gannel	4849 4558
Bungonia	Ian Tapper	4844 4460
Gundry	Dennis Borlan	4821 6821
Nerriga	John Rolfe	4845 9160

**PHONE 4844 5359 or
CHANNEL 21/209 Base**




Windellama SES First Aid

Graeme McFarlane	4844 5506
Kevin Muffet	4844 7143


Police

Tarago Snr. Const Glen Cassidy	4849 4411
--------------------------------	-----------

Goulburn Base Hospital 4827 3111

Ambulance  **000**

**For Mobile users
in case of emergencies dial
112
And it will be treated as a 000 call**



February 2007

MON	TUE	WED	THU	FRI	SAT	SUN
			1	2	3	4
5 Bungonia Quilters P&C Meeting	6 Willow Glen Gardeners Anglican Women AGM	7	8	9	10 Trivia Night	11 St. Marks - Bronte
12 Bungonia Quilters	13 Small Farms Field Day meeting	14 St Valentine's Day	15	16	17 Fire Brigade meeting & training	18 Hall Country Markets <i>Chinese New Year (Year of the Boar)</i> <i>Garage Sale</i>
19 Bungonia Quilters	20 Progress Meeting Pancake Day	21	22	23	24	25 St. Bart's - Windellama
26 Bungonia Quilters	27	28				