

THE WINDELLAMA NEWS



Windellama Progress Association Hall Inc.
Vol. 18 no. 6 – July 2014

Editorial & Layout: Denise Johnson & Gayle Stanton
Sec/Treas: Denise Johnson

www.windellama.com.au

Published Monthly

Hard Copy Distribution 400 - Website : 6,000 average/month
Windellama, Oallen, Nerriga, Bungonia, Mayfield, Qualigo, Lake Bathurst, Bungendore & Tarago

WINDELLAMA HALL COUNTRY MARKETS

SUNDAY 20th July
9AM TO 1PM

LOCAL PRODUCTS FRIENDLY ATMOSPHERE
FOOD & REFRESHMENTS PLENTY OF PARKING
MUSEUM OPEN

Enquiries to Bob Shaw on 4844 5001

Market Day kitchen helpers needed to serve food and drinks once or twice a year.

* BURNING OFF? - Notification now required *
Windellama Hall is your Neighbourhood Safer Place

Annual Subscriptions - please send your details and **\$25** (cheques payable to 'Windellama News') to cover the annual cost of postage.

All cheques please post to:

The Secretary, PO Box 705, Goulburn. 2580

* Unpaid subscriptions will be cancelled after one month

If you have any short articles, anecdotes, or something else interesting about yourself, your family, or the community; please write it down and drop it in our letterbox at the Hall. We will edit it and publish it in the Windellama News.

A LOCKED POSTAL BOX IS AT THE FRONT OF THE HALL, 3444 OALLEN FORD RD, IN THE STONE WALL FOR THE COLLECTION OF ITEMS FOR PUBLICATION

Items left in the box after the deadline will not be collected or included in the News

Articles, adverts, etc may also be sent by email to:

newswindellama@gmail.com

Adverts sent by email will not be inserted unless payment is received by the deadline.

Our Policy on Receipts

The Windellama News makes out a receipt for all advertising payments made to the paper. We don't post out receipts to save cost and we assume that the appearance of the advertisement in the paper could normally be taken as proof of payment.

If you require a posted receipt please include a stamped self-addressed envelope with your payment.

It would be greatly appreciated if anyone sending money to the Windellama News would include their name and address and a note saying what it was for and put it in a sealed envelope. This would avoid a lot of confusion and uncertainty .

Notice to advertisers, article submitters & readers

The Windellama News is published and authorised by the Windellama Progress Association Inc. Whilst every care has been taken in the production of the News & publishing to the web page on the community website, the editor takes no responsibility for any inaccuracies, errors or omissions. All such contributors by forwarding advertising, notices, & articles, agree to indemnify the publisher & warrant that the material is accurate & neither deceptive nor misleading, in breach of copyright, defamatory or in breach of any other laws & regulations.

The responsibility for advertisements complying with the Trade Practices Act lies with the person, company or agency submitting such for publication. Original material appearing in this newsletter is copyright. It may be reproduced in part or in whole for the benefit of the community, provided that the source of the material is fully acknowledged. If you have any queries about using material from the Windellama News, please contact the editor.

BUSINESS DIRECTORY

Driveway supplies	Tradesmen
Builder	Markets
Electrician	Winery
Entertainment	Engineering
Glass	Soap
Handyman Services	Septic Services
Health	Bitumen / Concrete
Home supplies	Shed Supplies
Home Services	Heating / BBQ's
Mechanic	Bikes & buggies
Nursery	Playgroup
Office supplies	Cattle / sheep
Piano	Excavation
Plumber	Contractors
Personal Trainer	Solar supplies
Rural equipment	Funeral services

Inside this Issue.....

*****	5
P & C; SES	7
Progress Assoc & Garden Club	9
Landcare	11
Nerriga News	13
Historical Soc	15-17
Windellama RFS	19
School News	21
Willowglen Gardner	23
Arts Society	25
Revegetation	27
Gardening Tips	29
Church Info	31
Classifieds	32-33
Community Information	34-36

DEADLINE FOR ALL ISSUES IS THE 20TH OF THE PRECEEDING MONTH

YOUR WINDELLAMA NEWS IS PRINTED BY BUSINESS REQUISITES, GOULBURN

Community Notice Board

WINDELLAMA PROGRESS ASSOCIATION ANNUAL GENERAL MEETING NOTICE OF MEETING

Notice is hereby given in accordance with Clause 25(1) of the constitution of the Association, that the AGM of the Windellama Progress Association Hall Inc. will be held at Windellama Hall on Saturday 12th July commencing at 2 p.m.

Nominations are hereby called for the positions of –

President

Vice-President

Secretary

Treasurer

Ordinary committee members (6)

Nomination forms can be obtained from the secretary (4844 5157) and must be delivered to the secretary seven (7) days before the date of the meeting.

Changing times at Windellama News

As some of you already know, Denise Johnson has stood down as editor and secretary/treasurer of the Windellama News. Her very busy full time job in Goulburn just does not leave enough time for all her very many activities.

Denise has been the driving force behind the Windellama News for the last 10 years. She took over the job of Editor from Carina Clark and along with Cathy Meehan oversaw the Windellama News move from a somewhat manual process into the digital age.

From all of us, a very big thank you for all your tireless effort and time. And I am sure that you will be hearing from us as we find our feet over the next couple of months.

Denise leaves very big shoes to fill; the new Windellama News team is Christine Woodcock - Secretary/Treasurer who will be looking after our finances, advertisers, subscribers and delivery team, Lyn Jones, Editor, and me, Editor.

Coming Events...

July

- 5 Nerriga Cake Stall
- 12 Windellama Progress AGM
- 20 Windellama Country Market

August

- 9 Canassist fundraiser
- 17 Windellama Country Market

September

- 21 Windellama Country Market

I would like to take this opportunity to invite anyone who would like to contribute their talents to the team to give us a call. If you would like to try your hand at editing, be a contributor, (or resume being a contributor), join the delivery team, we welcome you. The more people contributing to our local newsletter, the more diverse and interesting it becomes. With so many new people moving into the district, there must be lots of new talent and ideas out there!

Gayle Stanton

Countrywide Shower Screens



Shower Screens

• Frameless • Semi-framed • Framed

Mirrors

• Bevelled • Polished

Mick Greenwood

0448 494 220

Fax: (02) 4849 4220

E: countrywideshowerscreens@bigpond.com

Free Measure and Quote

Lowline Cattle

Quite, easy to handle stock - smaller size means easier handling, less stress on fencing & less soil compaction!



Great for first time cattle owners & for introducing children to cattle

Heard of Wiltipoll Sheep?

Wiltipoll sheep don't need shearing they shed their wool, are very hardy, don't crawl or wander, & produce fantastic fat lambs!



Windellama Downs

Producing quality, Australian breed cattle & sheep suitable for any size rural holding

Stock for sale

Commercial or registered stud stock
Mob: 0416 047 488 Ph: 4844 5175
Email: windellamadowns@iinet.net.au



GIO BUSINESS INSURANCE

GIO THE EXPERIENCED PROFESSIONALS

RETAIL BUSINESSES CARPENTER ELECTRICIAN MECHANIC PLASTERER HAIRDRESSER
BEAUTY SALON CHEMIST ACCOUNTANTS CAFES MOTELS RESTAURANTS TAKE A WAYS
SANDWICH SHOP SMALL SUPERMARKETS HEALTH FOOD DELICATESSEN CABINET MAKERS
KITCHEN MANUFACTURES AUTO ELECTRICIAN STRATA TITLE PROPERTIES ALL TRADES
RETAIL SHOPS SOLE TRADERS MOBILE MECHANICS WHOLESALERS TRAVEL AGENTS
NEWSAGENTS COMMERCIAL BUILDING PROPERTY OWNERS

- * Deal direct with the insurer
- * Get personal service and flexible solutions for your business
- * Fast and easy claims lodgement process
- * Pay by the month to assist with your cash flow

CONTACT :

Thomas @ GIO COMMERCIAL INSURANCE DISTRIBUTION

Mobile: 0408 641 879

Community Notice Board

2014 Annual Report from Windellama News team

Gayle Stanton & Denise Johnson have alternated each month as editors. This sharing has made it manageable for 2 busy people. Unfortunately after being editor for 10 years and secretary/treasurer for nearly 2 years, Denise Johnson has stepped down from these positions due to full time work. Denise will still remain a member of the delivery team and backup editor.

Welcome Lyn Jones & Christine Woodcock to positions on the team.

We are still managing to create a small surplus each month, and to date have a balance in our account of \$8,803-39 as at 31st May, 2014. We have during the last year supplied a kitchen pack for the SES shed.

We now find ourselves at the point of purchasing a new laptop & software as our old one is slowing down (like all of us) and needs replacing. This will use a good portion of our funds but thankfully to all the community we have these funds.

A big thank you to all the delivery team:-

Gayle Stanton & Ray Plant

Warren & Judy Yates

John Pearce

John Robinson

George Webb

Di Roberts

Chuck Mulkins

Denise & Gary Johnson

Irene Turner

Graham & Christine Woodcock

Trevor Cochrane

Di Andrews

Kevin Muffet

A great big vote of thanks to Dave Edworthy for allowing us to have our monthly edition on the web, which most of our readers now access in full colour.

Also a vote of thanks goes to all the regular contributors who make our newsletter interesting.

And lastly to our advertisers, a great big thank you for supporting your community, especially in these financial times, for without them we would not have this community newsletter.

The Windellama News still manages itself autonomously and still operates in the black without any subsidies. Although we don't physically produce the newsletter, the costs of production are certainly minimal in comparison, and are surely charged at a special rate from Roger McLaughlin at Business Requisites. Printing costs each month have finally gone up from \$320 to \$336.

Anglican Church News

Until further notification, both services will be at St. Bartholomew's Church, Windellama.

All services are held on the second and fourth Sundays in the month. Bishop Stewart Robinson will be attending our Service on Sunday 24th August to celebrate the church's 155th birthday.

L Stockford

There will be a cuppa and finger food after the service, if you could bring a platter, it would be most appreciated.



Donlin Dexter Stud

"Keeping the Irish Tradition"



Breeding the 'small acre mate'

- House Cows
- Stud cattle
- Lawnmowers

Enhancing their docile natures:

- Halter Trained
- Handled daily

Naturally small, beefy little buggars

Over half our herd produce pure A2 milk

DNA Tested for:

- Parent Verification
- A2 Milk Protein
- PHA & BD1
- Colour (Including Dun)



Contact: Lindsay and Donna

Bungendore, South East NSW. Ph: 0416 893 806

Email: donlin.dexters@yahoo.com.au

Website: www.donlindexters.com.au

Windellama SES First Aid & CFR

Our CFR Unit had an average amount of calls for the month up until now, that is. The variations in Request For Assistance, never ceases to amaze us. It is most gratifying to get feed back from those who we do treat, this makes the "job" worthwhile, thank you.

We have started training in the new unit, even though all is not complete in same. I must, at this point, sincerely thank the Windellama Progress People for their generosity, in letting us use the Hall for all the past years.

The technical boys will be fitting out the unit on Monday, to enable us to be very close to being fully functional.

Kevin Muffet

Windellama School P & C

Once again the P&C's auction and fireworks fundraiser was a huge success.

Our resident auctioneer, Graham Kinder, managed to strike the right note, convincing attendees to happily part with just enough money to make them feel they'd grabbed a bargain, while still maximising the fundraising for the P&C. For the first time we had a magician conduct two shows during the afternoon. This had the great advantage of keeping the children quiet and entertained, until the balloon animals started to pop! The fireworks as always were big, bright and loud. We are very fortunate to receive such a high level of service and sponsorship from the internationally renowned Foti International Fireworks.

Thanks to everyone who sponsored, donated, attended and volunteered this event. We can all relax now until the Field Day.

**Don't forget to
come along to
your
Windellama
Country Market
On Sunday
20 July**



Industrial • Commercial • Rural • Domestic
Ph 4844 7088 **INSTALLATIONS** 0418 234 289

ALLARD

ELECTRICAL CONTRACTING SERVICES
SOLAR UTILITIES & ENERGY SERVICES
GAS-OIL COMBUSTION SERVICES
stevenallard@bigpond.com

ELECTRICAL LICENCES:

NSW Lic.No 198855C
NSW Lic.No 498875S
ACT Lic.No 2009576
QLD Lic.No C13290

ACCREDITATIONS

AUS C.E.C. Design & Install Grid Connect
& Stand Alone Solar Systems #A3632173
ACT Type (B) Gas Appliance #200732
NSW O.H.&S. General Induction #03655
NSW Confined Space Trained #1140909

RON WENBAN

**** LOCAL ELECTRICIAN**

Rural * Domestic * Commercial

PH: 0428 445 259

Email: ronwenban@skymesh.com.au



Southern Districts Piano Service

Pianos • Pianolas • Tuning • Repairs
Re-polishing • Removals

Graham Price

02 4844 5329



CJ Solar

"Quality Systems that last"



**Home, Business or Community
Organisations**

**Custom Designed To
Meet Your Energy Needs**

- ◆ Stand Alone Systems
- ◆ OnGrid With Battery Backup
- ◆ Grid Connect
- ◆ Clean Energy Council Accredited

Ph: 4849 4225

www.cjsolar.com.au

PREVIOUSLY TRADING AS SUN POWER

LICENSED ELECTRICAL CONTRACTORS (241654C)

WINDELLAMA PROGRESS ASSOC. HALL Inc.

REPORT FROM THE PROGRESS ASSOCIATION

The Annual General Meeting of the Progress Association will be held at Windellama Hall on Saturday 12th July. All positions on the executive and committee will be declared vacant and an election held. We were short a couple of members on the committee over the last twelve months and we hope to be able to fill them this year with some new blood. The secretary has resigned and a replacement for this position is needed. Please consider joining the Association and assisting in running this important community asset. Windellama Hall is owned by the community, i.e. all of us, and without it the focal point of the area would be lost.

The annual Outreach meeting will be held at the hall on Tuesday 22nd July. This meeting gives our community the chance to meet councillors and council staff, to voice concerns and ask questions. Progress will be providing a light supper. Come along and show support for the good things Council has been doing, or make suggestions as to how things can be improved.

The annual Small Farms Field Day is approaching too quickly. The prospectus will be sent out to exhibitors within the next few days and we hope that this, our twenty-first, will be bigger and better than ever. We are planning great entertainment for the day and hope to welcome a bumper crowd of interesting displays and enthusiastic visitors.

We hope to see you at the AGM and any of the General Meetings which are held on the third Monday of each month at 2 pm.

Frances Knights - Secretary

Windellama Exercise Class

At Windellama Hall. Personal trainer attending. Mondays 9.30am-10.30am, all ages, men & women, preschoolers welcome to come along with parents. Conducted during school term.

For Info call Sally 4844 7154

Craft @ Windellama Hall

Craft at Windellama Hall is on Tuesday afternoons, except the first Tuesday in the month.

All crafts are welcomed. Come and meet the local ladies have a chat and a cuppa, all for the price of a 1.00.

For more information ring Irene 4844 5214

Windellama Garden Club Inc.

This month we are off to "Old Gundary" for a visit to see John Fife's museum.

We are also getting busy for our Cancer Fundraiser for "Can Assist" on 9th August. We will have a stall, chocolate wheel, raffle, sausage sizzle and of course our big cake auction, the highlight of the day.

The day begins at 10.00 am and the cake auction starts about lunchtime.

Come along and help a very worthy cause.

Our AGM is coming up in July

Pam Williams

D & J RIGOLI



**HANDYMAN SERVICES
&
PROPERTY MAINTENANCE**
ABN 43002820238

*** INTERIOR LINING * SMALL
RENOVATIONS
* SHED TO HOME CONVERSIONS
* PERGOLAS * VERANDAHS
* PAINTING * TILING * PAVING**

**And much more...
no job too big or small !**

Will beat any reasonable quote

Ph: 4844 5393

Mob: 0419 492 799

Fax: 4844 5163

**TRAIN YOUR
DOG**



SCOTT BORLAND
Pack Leader / Rehabilitator

Professional Dog Training
Dog Behaviour Consultation
Pet Product Sales / Advice

☎ 0420 425 901
✉ info@trainyourdog.com.au
🌐 www.trainyourdog.com.au



BRIAN'S AUTOSCREENS & GLASS

Mirrors · Showers
Mirror Wardrobes
Windscreens · Glass
Security Screens etc.

440 Auburn St Goulburn

Ph 4821 2633

Fax 4821 9133

AARON'S MINI EXCAVATIONS

ABN 84197940351

* BOBCAT * 5 TON EXCAVATOR
* TIPPER * SITE PREPS DRIVEWAYS
* SITE / PROPERTY CLEAN UPS
* POST / PIER HOLES
* TRENCHING & DRAINAGE
* RETAINING WALLS **FREE QUOTES**
4841 1862 - 0418 111 862

Need a Plumber Call. . .

GRAHAM MOON

Lic. No. 194029C



Plumber - Drainer - Gas Fitter

Roof Plumber - L.P. Gas

DOMESTIC & COMMERCIAL - 7 DAYS

Phone 0428 223 677



Goulburn & Southern Tablelands Newest Winery

Cellar Door Upcoming Open Days

Hours - 11am to 4:00 pm

**JULY: Saturday: 12th
 Sunday 13th**

~check website for any changes or
call prior for a drop in visit or purchase anytime ~
*25 kms down Windellama Road from Goulburn
turn left into Muffets Road*

email: admin@yarralawsprings.com.au

web: www.yarralawsprings.com.au

133 Muffets Road, Quialigo
Ph 4844 7188

On Sunday morning 22 June Ray Shiel in a sunny corner of Windellama talked to a group of Landcarers and local residents about tree planting and tree selection and many associated subjects including the soils in which we grow them. He demonstrated some of the current methods used in tree planting in the paddock and the garden. Ray stressed the importance of trees in our lives and in our paddocks.

Ray was recently honoured by being awarded the title "Goulburn Citizen of the Year." This was for his efforts in establishing the Goulburn Wetlands Project, being a member of The Sustainable Advisory Committee as well as voluntary involvement in other local environmental projects.

REVEGETATION FIELD DAY

Next month there will be another important information day, again about trees, when Richard Stone will be leading us on an adventure into **getting trees back on farms**. This is part of the Upper Shoalhaven Landcare Council's project *Corridor Links and Carbon Sinks*. This field day, which is open to all those interested, will be held at the **WINDELLAMA HALL ON SATURDAY 26 JULY 2014**. The day begins at 10 am and will finish about 2 pm. RSVP to Richard Stone 0427 456 718 before Wednesday 23 July.

Richard has requested that **RSVPs ARE ESSENTIAL** for catering.

For more information about the Field Day see the article **Getting trees back on farms for productivity and diversity** on page

NEW TO WINDELLAMA?

If you are new to the area and are interested in joining Landcare you may be interested in joining us at one of our busy bees to see the kind of work we do. Call John Pearce (02 4844 5244) or Sandra Greville (02 4844 5947) for more information. Annual membership of Windellama Landcare is \$5.00 per family. Children are always very welcome.

WILD WINDELLAMA COLLECTION

Copies of Carina Clarke's Wild Windellama are available for sale. Carina's articles, accompanied by her beautiful sketches, about local birds, animals, plants, insects, fish and

Windellama Landcare



reptiles of the local area were published in the Windellama news over a number of years and are now collected in a two volume set called Wild Windellama. The set of two volumes is \$10.00 and free for members.

Upper Shoalhaven Landcare Council

Corridor Links & Carbon Sinks

REVEGETATION FIELD DAY

Windellama Hall

Saturday, 26th July 2014

10:00 am - 2:00 pm

Did you know the USLC has a range of hand tools & tractor mounted implements available for revegetation projects?

Come along & see what's available

Practical tree planting demonstrations

Site preparation & planting tips

Tree guards & other products

Why revegetate? shelter belt design

When to let the livestock in?

RSVP's ARE ESSENTIAL for catering

Register your interest by Wednesday, 23rd July

Numbers Limited

CALL: Richard Stone - 0427 456 718

Email: richard_stone@clearmail.com.au

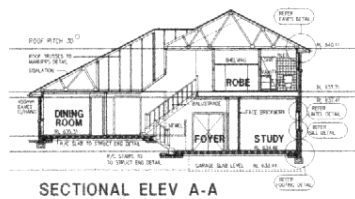


The 'Corridor links and Carbon Sinks: Biodiversity for Carbon and Corridors' project is supported through funding from the Australian Government's Clean Energy Future Biodiversity Fund.

ACOM DESIGN

PO Box 806,
Goulburn 2580

Yarralla,
Oallen Ford Rd
Bungonia 2580



SECTIONAL ELEV A-A

Robert C Everingham

Building Designer & Draftsman

New Homes, Alterations & Additions
Duplex, Villa, Townhouse Developments
Rural, Commercial, Industrial Buildings
Free Quotes - Competitive Rates - Prompt Service
Energy Efficient (SEDA), Eng Dwgs: Mech, Struct, HVAC

TEL 4844 4321

MOBILE 0417 682 022

FAX 4844 4323

EMAIL acomdesign@bigpond.com.au



MEMBER
STANDARDS AUSTRALIA



MEMBER
BUILDING
DESIGNERS
ASSOCIATION
OF NEW SOUTH WALES INCORP

Nirvalley Homestead NURSERY



629 Cullulla Rd, Tarago

PH 4849 4481



m: 0419 257 663

e: nirvalley@optusnet.com.au

★ ★ ★
**Quality Plants
Best Prices**

Sat & Sun: 8am-5pm,
Fri & Mon: 10am-3pm
Tues-Thurs: Call to
check opening times

**All our plants are ideal for local
conditions and fully acclimatized**

- Big range of natives and shrubs
- Conifers, Hedging, Windbreak
- Paddock & Feature trees

SPECIAL ORDERS WELCOME

Eftpos • Free local delivery

FRUIT TREES

**Over 80 varieties of fruit trees
including some heritage varieties.**

- | | |
|------------|---------------|
| Apples | Mulberries |
| Apricots | Persimmons |
| Pears | Pomegranate |
| Cherries | Boysenberry |
| Nectarines | Gooseberry |
| Peaches | Loganberry |
| Plums | Raspberry |
| Quinces | Black currant |
| Hazelnuts | Red currant |
| Almonds | Blueberry |
| Walnut | Pine Nut |
| Chestnuts | Carob |
| Loquats | Sugar Maple |
| Kiwi Fruit | Crab Apple |
| Figs | Olives |

Dallens Mobile Mechanic



Rob Hutchison

Ph: 02 4844 5727
Mob: 0401 078 483

- All mechanical repairs
- Breakdown service available
- Travel to you
- Motor re-builds
- New car services
- Stationary engine repairs
- Clutches, brakes
- Tractor repairs & re-builds

4844 5727

What's Happening in Nerriga

NERRIGA PROGRESS & SPORTING ASSOCIATION

ANNOUNCEMENT OF 2014

ANNUAL GENERAL MEETING

**to be held at 2PM
SATURDAY AUGUST 9, 2014
at
Nerriga Hall,
6088 Nerriga Road
Nerriga NSW 2622**

All are welcome

Enquiries: Helen Rolland, Pres.
Tel: 02 4845 9115

Nerriga Gardeners

Thank you to those who helped at a working bee at Sue & Bob Patrick's new home.

We helped to break the soil & form up the future garden beds around the house. After a lovely lunch we were taken on a short walk to have a look at the Corang River which was a rather special view.

On Wednesday July 16th at 10am we will be meeting at Kay & Chris Hamer's home on Nerriga Road for another working bee. We will be helping to put up netting.

As usual, all are welcome. Please bring a plate to share for lunch. For further info Kay Hamer 4845 9021 or Di Roberts 4844 5344



Get Bushfire Ready This Winter

**Call Divall's
today to
organise
your
regrowth/
tree
clearing
02 4829 8200**



**Wherever there
is available
bush fire fuel
(combustible
material),
around your
property, a
bush fire
hazard
exists.**

Clearing trees
within 40 metres
of a house is the
most effective
way to reduce
the probability of
it being de-
stroyed in a bush-
fire.(ANU)



The work an individual does to prepare their property also plays a critical role in bush fire management., if your property is not prepared then embers will find somewhere to land and cause spot fires (NSW RFS).



divalls.com.au



DISCOVERY OF WINDELLAMA

On March 3 1818, James Meehan, Charles Throsby, Joseph Wild, John Glynn, Hamilton Hume, George Grimes, Charles Gilliver and several servants set out from Liverpool to try to find an over-land route from Sydney to Jervis Bay.

Having reached the Shoalhaven River near the Bundanoon area, the party decided that they could not cross the river at that point so continued to the south. Again near Bungonia area they formed the opinion that they could not cross the river. The party decided to divide into two, one party consisting of Throsby, three servants, Grimes and two black trackers re traced their tracks and succeeded in finding a way to the coast via Kangaroo Valley.

The other party consisted of Meehan and Hume and several other men. They set in a southerly direction on 1 April from where the parties had separated. Later that day they crossed the Jacqua Creek and camped the night at about what is now Portion 6 of County Argyle.

Wednesday 1st April 1818

Returned by the West of North to the forest land about 4½ miles over very bad land and went nearly west 1¼ miles met my trace of Friday on the open plain-at about 1¼ more good then bad land-at 1 mile more met a chain of deep ponds-good land-at about 6 miles in all stopped for the night on the ponds which are very large. Run to Shoals Haven the low lands good. The ranges stony and barren. (Extract from Meehan's journal.)

Setting out the next day they proceeded in a south westerly direction and crossed Bogungra Creek in the area that is known today as Brooklyn. Travelling further on they crossed Windellama Creek where the Buburba Creek joins it. This is about Portion 134 Parish Cullulla that was later owned by Alured Tasker Faunce.

Thursday 2nd April 1818.

Bad lands for the first three miles then met a chain of ponds. Run to the Shoals Haven run nearly east some good land at 4½ miles then poor pasture -another chain of deep ponds-at 5 miles the W bears down to S E no good land on the left of my track which is nearly S W of S at 6 miles the country forest but not good-for 1½ miles then all poor barren land to the end better than ten miles. Stop for the night. (Extract from Meehan's journal.)

April 2 1818 could be considered the day that Windellama area was discovered when white man first set foot on the area. This was two years before white man crossed the site of Goulburn.

They camped for the night near the junction of the Windellama and Buburba creeks and set out the next day, April 3 1818 in a westerly direction passing quite close to where St Bartholomew's Church stands today. They crossed Cartroad Creek and Connors Creek and on 3 April discovered the Morass swamp land (known by the natives as Bundong) and Lake Bathurst.

(Continued on page 17)

F I F E ' S S T O C K F E E D S



Round Bales
Pasture Hay
Square 8x3x2
Lucerne Hay
Rye & Clover



Also suppliers of Bird Seed, Dog Food, Cat Food,
Wheaten Chaff, Oaten Chaff, Stud Mix

51-52 Knox St Goulburn

(0 2) 4 8 2 2 3 1 1 1

Booyong Alpacas

2217 Windellama Rd.

Qualigo. NSW. 2580.

Tel. 02 4844 7267.

Mob. 0417 658730.

Web. www.booyong.com.au

Like us on Facebook

www.facebook.com/booyongalpacashop

Email: booyongalpacas@optusnet.com.au



Breeding Coloured Huacaya Alpacas

since 1997 with a current herd of 175 Alpacas

Alpaca Sales & Stud Services

On Farm Alpaca Shop

selling 100% Booyong Alpaca Products
& Selected Imported Alpaca Garments.

Call us for advice or to visit the farm & view
our Alpacas & Shop.

Your Advertisement

can go here

for only

\$12.00

per month

Friday 3rd April 1818

Went about W of S about two miles over very bad land to the top of a rocky range bad land continues to 3½ miles then begins a very extensive forest landat 5½ miles on the E side of a very extensive plain without trees not generally good land-but in part. Went N W about 1½ miles then opens a large plain-bears on S side nearly N E 3 or 4 miles with two large bushy marshes running past at 7¼ miles on the top of a narrow ridge from whence the plain and marshes are open to the eastward and on the west is a large lake exceeding ten miles inthe water from the marshy lagoons empty themselves into the lake at which place the land is sandy and swampy-with somegum trees and honey suckles growing. The quantity of ducks and other wild water fowls on the lake and marshes are beyond description or comprehension.

(Extract from Meehan's journal.)

References.

RAHS Journal Vol7 Part 5 1921.

Journal of James Meehan 3 March 1818 to 14 April 1818.

Tom Bryant 18 June 2014



WINDELLAMA HISTORICAL SOCIETY Inc.



Hello Everyone,

Our next excursion will be John Fife Museum towards Goulburn. This will be another excursion not to be missed, the museum has a wonderful collection of farming equipment, original Shearing Quarters, plus lots more. Morning tea and lunch will be served on site for a cost of \$13 for members & \$15 for non members.

The date will be the 19th July, meeting at the Windellama Museum at 10am

Members and visitors who would like to attend please book in as numbers will be limited.

Our museum is open on Market Days – the third Sunday of each month 10am – 2pm

There is a selection of Windellama local history books by Tom Bryant and books by a local poet, Rex Hockey, for sale in the museum as well as *Motorcycle Grand Prix Posters for only \$20*, bookmarks and postcards with images of early Windellama.

We also have volumes 1&2 of Wild Windellama by Carina Clarke For Sale at the Museum \$15.00

New Members & Visitors are always Welcome

For any enquiries please contact:

Rex Hockey 48445147 President
Julian Woods 48445270 Secretary
Marcia Tatam 48216421 Treasurer



Come along to the

COMMUNITY OUTREACH MEETING

Hosted by Goulburn Mulwaree Council
in conjunction with Medicare Local
at

WINDELLAMA HALL

TUESDAY 22 JULY 2014

STARTS AT 6.30PM

The Community Outreach Meeting is an opportunity to meet Goulburn Mulwaree Councillors and senior staff, and discuss Council related matters with them along with meeting staff from the Medicare Local Goulburn Branch.

A light supper will be served after the meeting
Call 4823 4552 for further information

Windellama Hall is located at the corner of
Windellama and Oallen Ford Roads, Windellama.

IMPORTANT

To have a specific item included on the meeting agenda for discussion, please email amy.croker@goulburn.nsw.gov.au or contact Executive Assistant to Corporate Services - Amy Croker on 4823 4552. Agenda items must be received by Monday 7 July 2014.

WINDELLAMA VOLUNTEER RURAL FIRE BRIGADE



WINDELLAMA RURAL FIRE BRIGADE

Report all Fires 000 Brigade enquiries 4844 5359 Yass - 6226 3100
& Emergencies UHF 21

RFS website www.rfs.nsw.gov.au

or Brigade website www.windellamarfs.com.au

Captain – Rex Hockey 4844 5147

Snr Deputy – Lynton Roberts 4844 5118

Burning-off now permitted with regulations

While the fire season has finished and permits are not required for burning off from the 1st April 2014, there are still regulations that must be followed.

Fines can apply if regulations are not carried out.

- ✓ Yass **MUST** be notified 24 hours before you light the fire, during business hours 9am to 5pm and by 3.30pm on Friday afternoons, phone 6226 3100.
- ✓ Your immediate neighbours must also be notified.
- ✓ Notify the Brigade as a courtesy to save time, if smoke is spotted, phone 4844 5359.

For more information contact one of the Brigade phone numbers above.

Winter the most dangerous time for house fires

- Every Winter, RFS volunteers attend numerous house fires in our area and many of these could have been avoided by residents taking a few simple steps.
- Winter is the most dangerous period for house fires and it's important that every home is made as fire safe as possible, by checking items like heaters, electric blankets, clothes dryers and smoke alarms.
- Portable heaters should be kept well away from items like curtains, furniture and clothing at all times and residents with wood fired heaters should take special care by using a fireplace screen and properly disposing of hot ashes.
- Always use a fire screen in front of open fires and close combustion heater doors to prevent sparks or embers from coming into contact with carpet, furniture and other combustibles.
- Never leave children or pets unsupervised in a room where an open fire or combustion heater is in use.
- Electric blankets should be checked for damage or frayed cords before they're put on the bed and once they're on the bed, turn them off when not in use.
- Clothes dryers need to be checked regularly and the lint filter cleaned every time they're used to prevent a fire starting.
- And every home should have at least one working smoke alarm, which could give you valuable warning in the event of a fire and valuable seconds to get out.
- Every second counts in a house fire and having a working smoke alarm and a well rehearsed escape plan could mean the difference between surviving a fire or not.

Training:

If you wish to take part in the Windellama Brigade training or be contacted by email regarding the monthly training details visit the Brigades website and send an online contact form or email windellamarfsttraining@gmail.com. For information on training dates, times and scenarios check the Brigade website or contact the Captain Rex Hockey 4844 5147.

www.windellamarfs.com.au

General Meeting 26th July 2014, 6pm **Training** 26th July 2014, Pile Burns

General Meeting 23rd August 2014, 6pm **Training** 23rd August 2014, TBA

Please take care on our roads and see you at the next training and meeting. **All welcome.**



MICK'S MULTI TRADES

ABN: 90 178 544 738

Multi Skilled Tradesman

Windellama NSW

Lic # MVTC 126573

Mob: 0413 059 587

Email: micksmultitrades@gmail.com

PROUDLY SUPPORTING THE COMMUNITY OF WINDELLAMA IS MICK,
A MULTI SKILLED TRADESMAN, A DIESEL MECHANIC BY TRADE,
ALSO
AN EXPERIENCED HANDYMAN, GENERAL LABOURER,
PLANT OPERATOR AND TRUCK DRIVER.

I HAVE ALWAYS LOOKED AFTER THE LOCALS, AND CAN TURN A
HAND TO ANY JOB SO SHOOT ME AN EMAIL OR PHONE ANYTIME,
YOU'LL BE PLEASANTLY SURPRISED AT MY DOWN TO EARTH RATES.

Andrew Pearson

4844 5838 or

0400 285 765

REASONABLE RATES

FOR HIRE

With Operator

Backhoe - Slasher - Loader

Grader Blade w/rippers

BOBCAT HIRE

MOBILE MECHANICAL REPAIRS

Diesel / Petrol

Auto Electrical

For your truck, tractor, car



Athletics Coach

Personal Trainer

Marina Wenban

Ph: 0439 029 313

Accredited Athletics Australia,

AT&FCA, Fitness Australia

**Advertise here
for only \$6.50**

Windellama Public School News

Email: windellama-p.school@det.nsw.edu.au

Phone: 4844 5130

Website: www.windellama-p.schools.nsw.edu.au

Fax: 4844 5265

GRIP LEADERSHIP

Last week we went to the Grip Leadership Conference in Canberra. We learnt about how to be a good leader. It was fun! I saw my cousin Ethan and other friends from Tarago. We played some games. We went on a double decker bus. *By Brooke*



Windellama Public School Leaders, Brooke and Cameron.

ASSEMBLY

Assembly award recipients:

Wonderful Worker: Brooke

Super Star Award: Jordyn

Super Star Award: Alexia

Super Duper: Victoria

Eureka Award: Lachlan

Eureka Award: Montana



Congratulations to the above students!

P&C FIREWORKS AND AUCTION NIGHT

This year the P&C fundraiser was another resounding success. It looks like we have broken last year's record on the amount of money raised. Thank you to our school community, wider community and a special thanks going to our wonderful auctioneer Graham Kinder who did an exceptional job!



P&C Annual Fireworks & Auction Night.

EXCURSION TO GOULBURN REGIONAL CONSERVATORIUM AND THE RAIL HERITAGE CENTRE

The K-6 students went on an excursion to the Goulburn Regional Conservatorium to watch a big band play and we also took the opportunity to go into the recording studio where they had a lot of fun. After having lunch in the park they made their way to the Rail Heritage Centre and had a guided tour of the facility.

Watch out!
Students in action.



UPCOMING EVENTS

- Opera House Performance – Wednesday 25 June

~~The Loaded Dog Hotel~~



Tarago EST 1848

Hoteliers: Nicole & Mark Ryan www.loadeddoghotel.com 02 4849 4499
1 Wallace Street TARAGO NSW 2580 | 02 4849 4499 | loadeddoghoteltarago@gmail.com

LIVE MUSIC @ THE DOG

July 19th

Stephanie Jansen

August 16th

Col Finley

*New Sunday
Night Menu*



Join us for
the State of
Origin Final
Wed 9 July - Lucky door
prize drawn
Free half time pies



The Dog Bistro

Nicole's Fish'n'chips Thursdays 6 - 8pm \$7:50
Home made Pizza all day every day, eat in or take away



Bistro Hours:

Friday & Saturday 6pm - 8:30 pm | Sunday 6pm - 8:00pm
Lunches 7 days 12 - 2pm

Willowglen Gardeners

<http://www.whispersfromwillowglen.blogspot.com>

June meeting was on a beautiful crisp winter morning at John and Marian's.

Their garden was still looking beautiful and colourful although it was June.

They have traditional borders, a wonderful native wildlife garden and a prolific vegie patch. John is still growing tomatoes in his mini greenhouses and has the largest worm farm I have ever seen (with the largest worms!)

July meeting will be at the Goulburn Wetlands where we will be given a guided tour, meeting in the car park at the end of May Street, Eastgrove, at 10 am, Tuesday 1st July.

Please bring something for morning tea and drinks

Happy Gardening Everyone!



Rusty Balls

- Natural bush soaps
- Pet shampoo
- Anti-bug balls - natural insect repellent
- Blind Baking Balls
- Hand made ceramics

Gary & Denise Johnson

4844 5087

sales@rustyballs.com

www.rustyballs.com

SHEPHERD'S HILL NURSERY

321 George St, Marulan

Ph 4841 1404

Fax: 4841 1454 Mobile: 0413 047 105

Look for the house on the hill

For all your garden needs &
acclimatised plants

Potted colour, Seedlings, Bulbs, Fruit trees,
Ornamental trees, Windbreakers,
Shrubs and more
Potting Mixes & quality soils & mulches.
Pots, Statues & Gifts

Gift vouchers & Eftpos available

We are members of NGI NA
Nursery & Garden Industry NSW & ACT





SEPTIC TANK & GREASE TRAP CLEANING SERVICES



0408 483 943

Bob Baird Goulburn
PH: 4822 3290
7 DAYS—SERVICING ALL AREAS

BUSINESS REQUISITES Sales & Service

- Photo Copiers
- Fax Machine
- Cash Registers
- Computers
- Stationery
- Consumables

Ph: 4821 5109

E: bus_req@ozemail.com.au

10 Russell Lane, Goulburn

Printer of your Windellama News



GOULBURN & DISTRICT ART SOCIETY INC.

PO Box 71, GOULBURN NSW 2580

Web: www.artsociety.goulburn.net.au • Email: mail@artsociety.goulburn.net.au

President: Helen De Jonge 4829 2300 • Vice President: Marion Schumacher 4884 4171

Secretary: Lesley Whitten 0417 240 595 • Treasurer: Alan Whitten 4823 6635

Workshops

**Pastels for Beginners - Animals -with
Gillian Baldock, GDAS member**

**July: Sunday 27th, 10am-4pm
at Gallery on Track.**

Cost: Members free. Non-members \$30.

**Equipment: phone Helen for information and to
reserve your place.**

Contact Helen 48292300.

**Watercolours for Beginners with
Aina Atkins, GDAS member**

August: at Gallery on Track.

More details next month or contact Helen.

Workshops to be Planned

Matt-board cutting with Helen De Jonge.

OUR WEB SITE:

www.artsociety.goulburn.net.au

Members can be featured on our website. Contact Katya Mortensen if you would like to have some pictures of your works on it.

Members and guests: please use our website to keep up to date. Newsletters and various forms are posted on it. For those who are not on the net, please try to use it when visiting friends and relatives. You can also access the website at the town library. If unsure how to do that, the friendly librarians will assist you.

COME PAINT WITH US AT THE ART SHED

Members new and old are invited to come to our Art Shed at the Mens Shed on Thursdays. There are usually one or members at the Art Shed from about 11am to 4pm when you might like to join them to draw and paint. It is quite informal. Bring your painting or drawing equipment and your lunch. We have 4 easels and work tables for your use. Alex and Aina are fairly regular there.

BLACKSPOT ROAD FUNDING MORE ACCESSIBLE FOR HUME

Federal Member for Hume Angus Taylor has encouraged local councils and communities to nominate for road funding announced in the Federal Budget.

Mr Taylor said eligibility criteria under the national *Black Spot Programme* had been changed to make the funding more accessible for regional communities:

At least 50 per cent of the funding for 15/16 and 16/17 is dedicated to regional roads;

The minimum required cost ratio benefit for funded projects has been reduced from 2:1 to 1:1; and

The crash history requirement has been reduced from three to two casualty crashes in five years.

"This new broader criteria will significantly help smaller councils like those in Hume to successfully nominate projects that were previously ineligible."

Mr Taylor also announced approved funding of just under \$1 million to fix six dangerous black spots in Hume. "The following projects were recommended by a panel of independent road safety experts and will be delivered over the 2014-15 financial year:

Muttama Road in Cootamundra Shire	\$27,950
Braidwood Road in Goulburn Mulwaree Shire	\$290,000
Taralga Road at Wombeyan Caves Rd in Upper Lachlan Shire	\$119,460
Taralga Road at Curraweela Causeway in Upper Lachlan Shire	\$92,560
Rugby Road in Upper Lachlan Shire	\$48,726
Burraborang Road (Mary Street) in the Wollondilly Shire	\$350,000

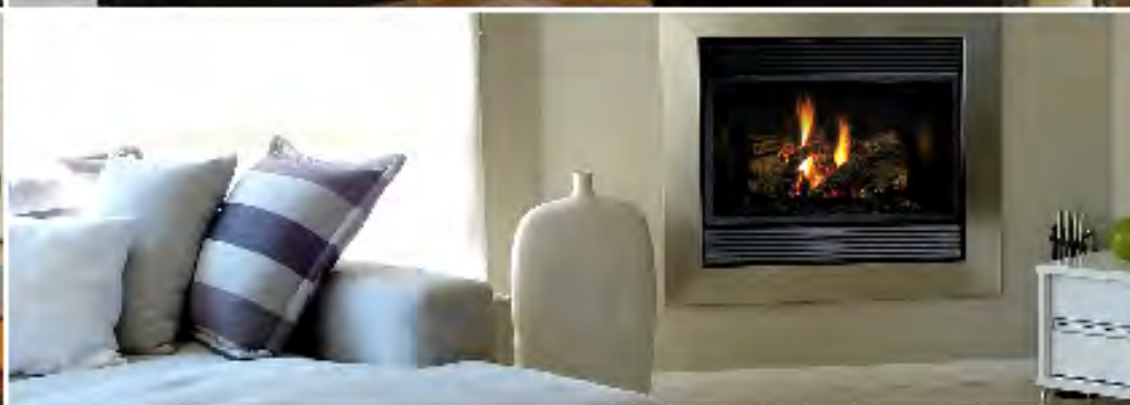
"I particularly encourage local councils to complete the online nomination form <http://investment.infrastructure.gov.au/funding/blackspots/> to apply for appropriate funding and get

Better Heating

A lot of places are selling heating products, like wood & gas heaters.
The difference is WE can show you how to use them!

We have the largest range of wood and gas heaters in Goulburn.

LARGE RANGE GREAT PRICES
FRIENDLY STAFF GREAT SERVICE



4821 1252 or 4821 4885

388 Auburn Street, Goulburn www.barbequesgalore.com.au

**BARBEQUES
GALORE**

BBQ Better.

Getting Trees Back on Farms for Productivity & Biodiversity

In the 25 years since the start of Landcare, numerous forward thinking landholders have benefited the community and their own farms and landscapes by integrating original vegetation and revegetated areas as part of their farming systems. Single paddock trees have been able to reproduce rather than be the last of their kind, sandy and salty areas have been stabilised, and the yellow rumped thornbills, scarlet robins, the diamond firetails and the fat black rock skinks and numerous amongst others are comfortably coming back.

Biodiversity Program Manager, Felicity Sturgiss said that “the founders of Landcare in this region showed us how it was done with the ‘trees on rocky knobs’ project. Scientists now advocate planting patches of trees and shrubs, rather than rows. Planting trees in patches is the most effective way of achieving the dual function of a wind-break for livestock and a habitat for birds, lizards and other small mammals. Livestock can move around a circular patch, as opposed to a long narrow windbreak, and find shelter from any prevailing wind. A patch also has more internal space for habitat for less fencing cost. Importantly, patches have been shown to act as stepping stones for birds, across the open paddocks to larger patches of bush where breeding is possible.

The Upper Shoalhaven Landcare Council (USLC) will be running a revegetation field day as part of its ongoing “Biodiversity for Carbon and Corridors” project. Richard Stone will present on the day – sharing his wide knowledge of the tools and techniques, and successes and failures of the revegetation game. Richard worked in a variety of natural resource management positions since the early nineties and has accumulated a vast amount of experience in the field of revegetation. Most recently he spent eight years working on numerous rehabilitation sites across the district as a Land Rehabilitation Catchment Officer with the Southern Rivers CMA. Richard now works as an environmental consultant and revegetation specialist in his business ‘Wilkstone Enterprises’.

Vegetation holds carbon, particularly in the wood of trees. In 2012 the Federal Government created the Biodiversity Fund as part of the Clean Energy Package. Groups across Australia proposed projects that showed they could use the money to increase Biodiversity and awareness of the values of biodiversity and store carbon at the same time. The USLC was successful in obtaining a four year grant.



“While decisions on individual properties make good sense for that property, they can add up to having a significant effect at a larger, whole of landscape scale. By taking the whole of catchment approach, and looking at individual farms at a landscape scale, we can better appreciate the risks and benefits of the ways we and our neighbours manage the land.”

The revegetation field day is aimed at introducing landholders to the range of products and equipment available to ensure a successful planting. Topics for discussion on the day will include site preparation, planting design and species selection, planting tips and long term maintenance of the revegetation area including when to let the stock back in. Practical demonstrations will also be included which will show off the range of both hand, motorised and tractor mounted implements that the USLC has for a nominal hire fee to assist landholders in getting the job done in the easiest possible way.

The field day is to be held on Saturday, 26th July at the Windellama Hall field day will run from 10:00 am until 2:00 pm. Local revegetation specialist Richard Stone will be facilitating the day on behalf of the Upper Shoalhaven Landcare Council. RSVP's are essential for a light lunch will be provided.

To register your interest contact Richard Stone by COB Wednesday, 23rd July 2014, numbers are limited. Call 0427 456 718 or email: richard_stone@clearmail.com.au

Goulburn Off Road Carts

www.offroadcarts.com.au

OPEN 6 DAYS



PORTABLE PETROL GENERATORS
From \$770



LARGE DIESEL GENERATORS
\$5,900



CARTS & BUGGIES
From \$3,300



FARM BIKES
\$2,600

**QUAD
BIKES**
From
\$5,000



4WD TIPPERS \$9,300



FULLY EQUIPPED FIRE TRAILERS
\$4,200

ENQUIRIES & SALES - PHIL BONSER

565 Mt. Baw Baw Rd, Goulburn NSW 2580

Mobile: 0419 694 148 Ph: (02) 4821 0397



Roses and fruit trees can be planted, also deciduous flowering trees such as flowering cherries, crab apple, flowering peach, lilac, laburnum vossi (golden chain tree), hawthorn. Liquidambar, box elder, golden elm, claret and golden ash and silver birch. Japanese maples and the weeping varieties of cherries, crab apples etc.,

Rose and fruit tree pruning can start this month. I prune my roses first week in August, except the small trim I do when weeding around them and de-heading the old buds. Don't forget to pick up all old disease leaves and burn them to stop the spread of fungus, you should spray the roses with Lime Sulphur.

After you prune the fruit trees spray them with Lime Sulphur or Bordeaux, to stop leaf curl, before the pinking of the buds.

VEGETABLES;



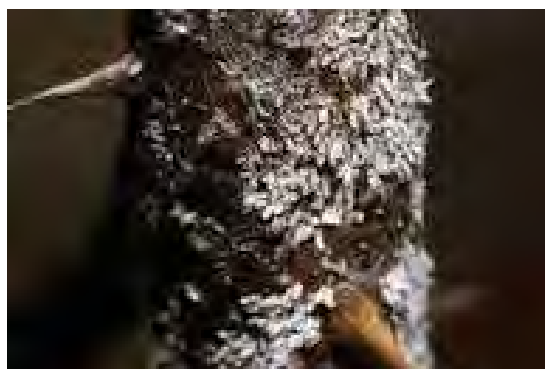
Sow broad beans, peas and all varieties of onions.

Strawberries can be planted now also prune the runner and replant removing the old disease ones. Strawberry should be moved into fresh beds every 3 years, to help fight fungus, or re-pot in fresh potting mix and give them some worm tea or Sea sole or weak chicken manure soaked in water to help them get established.

Rhubarb and asparagus crown can also go in now.

FLOWERS

Seedling for sowing; Stock, viola, primula, wallflower, russel lupins, delphiniums, foxglove, poppies, sweet William and calendula, alysumm, snapdragons, verbena, dianthus. Sow seeds direct into the soil for Virginian stock.



Watch for White scale insects on rose stems. Use an old toothbrush dipped in soapy water to gently scrub them off.



Brown patches on camellia leaves. This may indicate camellia tea mite. Spray the underside of leaves with horticultural soap spray.

Yellow pustules(blister) on leaf undersides. This is a sign of myrtle rust. Spray thoroughly with Eco-Fungicide at the first sign of damage.

This is a good time to repot up your old indoor plants with fresh potting mix, also give them a feed of sea sole and place them in a sunny place away from window in the frosty weather.

With all the weed about you can make a weed tea by soaking the weeds in a bucket for a week or two, then place some of the liquid and dilute to a weak tea colour and water on your plants.

WINDELLAMA PLAYGROUP

at

Windellama Public School

Each Thursday

9.30am – 11.30am



BYO snacks - tea & coffee supplied

Qualified art teacher visiting each fortnight

Bring your bubs & toddlers for a fun morning

Music, stories, sand-play, free-play, art, craft.

FREE!

**For more info ring Tony at the school on - 4844 5130
(NO PLAYGROUP IN SCHOOL HOLIDAYS)**



JCF Contractors are the specialist team to ensure your project has the manpower to complete all your key projects on time, to budget and at the highest level of quality.

No matter what your project, JCF can assist you in:

- Earthmoving
- Road Works
- Driveways
- Site Works
- Arenas
- Demolition
- Footings & Piers
- House Excavation
- Shed Sites
- Rubbish Removal
- Septics
- Landscaping
- Trenching

**Call Jon today for your FREE quote
0428 624 966**

Goulburn and surrounding areas



CHURCH INFO

Catholic Church Services

Parish Priest: Fr. Dermot McDermott
Assistant: Fr. Sijo Jose

Presbytery & Parish Office
Phone 4821 1022

Sunday Mass will be at 8am on the 2nd & 4th
Sunday at St. Patrick's **Marulan**.

Mass Times in **Goulburn** are:

Saturday Vigil Mass:

5pm (DST) at St. Peter & St. Paul's

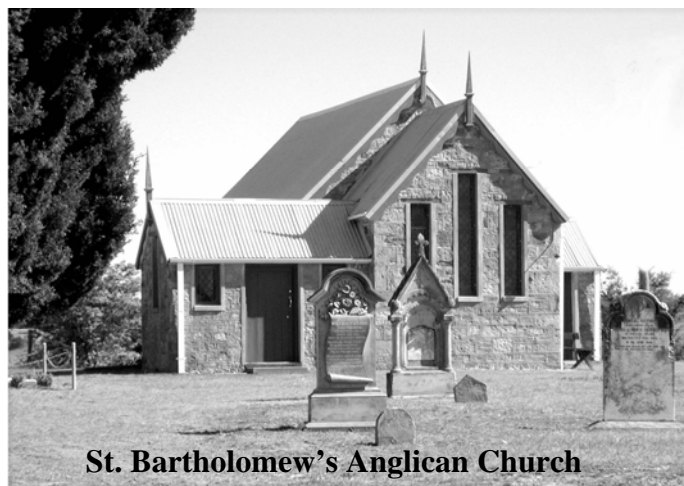
Sunday: 7am. at Our Lady of Fatima,
Nth. Goulburn

Sunday: 10am. at St. Peter & St. Paul's

St. Joseph's Church, Tarago

3rd Sunday of the Month

Enquiries: 4821 1022



St. Bartholomew's Anglican Church

CHURCH SERVICES

July

St. Bartholomew's - Windellama

Sunday 13th - 11:30am

St. Bartholomew's - Windellama

Sunday 27th - 11:30am

August

St. Bartholomew's - Windellama

Sunday 10th - 11:30am

St. Bartholomew's - Windellama

Sunday 24th - 11:30am

We have all our services at St. Bart's after May due to the church at Bronte can't be heated.

On August 24th it is our 155th Anniversary of St. Bart's and our Bishop will be attending that day. A light finger food luncheon will be served after the service at 11.30. Anyone attending could bring a plate please.

The Reverend Vanessa Bennett can be contacted on 4821 3631 or mobile 0417 699 700

St. Andrews (Anglican) - Tarago

2nd Sunday 9am

St. John's - Lake Bathurst

4th Sunday 9am

NERRIGA

ANGLICAN CHURCH SERVICES

Held at Nerriga Church

2nd Sunday each month at 2pm

(Except Easter & Christmas)

All Welcome

Rainfall Stats

16th May to 15th June



Rosewood, Windellama Road, Windellama

60 ml / 5 days

Gar-Den, Oallen Ford Rd, Oallen

65 ml / 11 days

Johnno's Store, Oallen Ford Rd, Bungonia

50.5 ml / 5 days

Tarkierelea, Fernleigh Close, Windellama

ml / days

Bee Ranch, Oallen Ford Rd, Windellama

44.5 ml / 7 days

Corang Cottage, Braidwood Road Nerriga

67.75 ml / 10 days

Tarago Village

59 ml / 9 days

Nerrimunga Creek Rd, Windellama 53.2ml / days

Willy Weather ml / days 1st-**th June

Classified Advertisements

All personal classifieds are FREE & also included in the Tarago Times
We run your advert until you let us know when you have sold it or gained it

GENERAL FOR SALE

Camp Bed, folding, single with mattress. Good condition. Ph 4844 5001

Pine TV & display unit with 23" analogue TV & digital box. \$250 for the lot. Ph 4849 4371

Outdoor camp shower, canvas bucket, 20 Ltr capacity \$10 Phone Bob 4844 5001.

Teak entertainment unit, with two glass door display. 6x4 foot. \$75.00 ONO.

Double bunks, Metal, with ladder, new innerspring mattresses. \$125 ONO

Two wooden bed side tables with cane draws.\$50 for two. Ph. 4849 4480

Assorted Household furniture, fridge, table, chairs, china cabinet, T/Tennis table. Braidwood Road TARAGO. Ph 0417 484 944

Roller door - colorbond brown - incl brackets and tracks. \$100 Ph 0422 971 217

Mirrors - Full length 1800 x 450 mm dressing room mirror with painted timber frame. \$50.00 Vanity mirror 900 x 750 mm unframed \$30.00 Phone Bob 4844 5001 after 7.00 pm.

3 seater **lounge** + 2 matching **armchairs** \$150.00 Bunk beds will convert to two single beds plus a trundle bed \$250.00 4844 5369

JET Wood Lathe Model 1236, 300mm bed with face plate & tool rest, 3 years old, good condition \$800 o.n.o. Phone Greg 4844 5157.

Ride on Mower, Masport Mercury. 2007 Model 20 H.P.42 inch cut. Regular service – needs new Spindle Housing. \$1,000. Ph 0419 004 919

1 x **King Single bed** \$200; 1 x **Single bed** \$150; 1 x **Single bed** \$100; **Dressing table/ chest of drawers** (8) \$150; 1 x **Glass TV table** \$150; 1 x **Glass coffee table** \$50
Ph 0411 421 416

GENERAL FOR SALE

Lounges - 1x3, 1x2 + ottoman - yellow fabric, Matching chair in navy blue. All GC. Offers over \$500 considered. 4849 4222

Desk - large timber , 2xdraws/storage under. Leather inlay + matching 2drawers file cab. Ergo office chair. All VGC. \$400 ONO 4849 4222

Washing machine NEC top loading 6.5kg.NW.652. Second hand. Good condition. Works well. \$100 phone Mark 0415 603 282

On-site caravan at Pine Park Caravan Park, Greenwell Point. Fully equipped, including annex with ensuite. Storage shed and room for a boat. \$12,000. Phone Ken - 4844 5157

Firewood. \$150 per load. Ph 4849 4520 for delivery.

Firewood. Seasoned hardwood. 2 tonne truck load \$430, ½ truck load \$250. Ph 0401 241 646

Firewood - Split, seasoned. Ute load - approx. one tonne. Local delivery - \$150 per load. Ring Greg - 4844 5157.

Firewood - \$150 per load, includes delivery. Ph 4849 4520

ANIMAL RELATED FOR SALE

Parrot Cage on stand, good cond. \$150 ONO. Ph 0429 006 745

Cocky's Cage 190cm high, 150cm wide, 65cm depth \$100.00 Ph 4844 5287

Reptile cage - 2' x 2' x 2' Glass enclose with heat pad & light & mat . \$250. Ph 4844 7168 or 0423 524 296

Saddles, good condition, \$350 & \$200. ONO. Riding helmets \$30 and \$20. Also other gear: bridles, leather straps, etc. Ph 0434 286311.

Classified Advertisements

All personal classifieds are FREE & also included in the Tarago Times
We run your advert until you let us know when you have sold it or gained it

ANIMALS FOR SALE

Puppy, bully stag, male, white, vac., microchipped. \$400 ONO Ph 0429 006 745

Piglets - different ages so different prices. Ph Bob McDonald 0429 494 331

Young **ducklings** - Buff Orpington/Peking cross - \$12 each **Quarrions** - greys, and Pearls - \$15 each. Ph 4845 9147 after 6PM.

Working Bull Murray Grey, \$950.00 ONO. Ph. 0414 616 960

Alpacas - lots of different colours & ages. From \$250 each Phone Jacki 0428 298 157 Boxers Creek

Angora Goats - various ages & sizes. \$20-\$35 each. Ph 0428 238 204

Dorper Rams, black headed, 1 x 4 yrs, 1 x 1 yr. Ph 4844 5570

Sheep First Cross BL/Merino, 6 ewes, \$65 ea or \$360 the lot. 11 wethers, \$70 ea or \$700 the lot. Call Keith 4849 4256

Quarrions (cockatiels) - \$12 each Ph 4845 9147 after 6pm

Horse part Arabian, 3 yrs old, regd, 14.2 hh, chestnut mare. \$3,000 Ph 0429 461 490

FOR RENT

2-3 bedroom partly furnished house for rent near Oallen Ford \$150.00 per week. Ph 4844 5344

CARS, BIKES, TRAILERS, etc. FOR SALE

Toyota truck, 1988, good working order, with 13ft steel tray & stock crate. Ph 4829 5123

Transalloy Ute Tray 1.8 x 1.8, suit most 4x4's, complete with dropsides and LED lights VGC -\$1100 o.n.o. Ph 0412 421 464

Polished Alloy Rear Ute Sports Bar \$100 Ph 0412 421 464

Aluminium Savage 4.3m Boat (1995) with 30hp Yamaha outboard on brooker trailer. Front steering & canopy, electric start, radio, compass, plus all extras. Always garaged & flushed, runs well. \$5,900 ONO Call Scott 0418 563 888

1997 Mazda Ute. 8 ft alum tray with racks, new clutch, rear wheel bearings & rear shackle bushes. Service record for past 6 years avail. Rego to Apr 2015 QWW 505 \$4,000 Ph 4844 5344

Motorhome Hino Rainbow bus, professionally converted for two. Fully equipped and registered. Inspection welcome. Phone Bruce 0428480650.

RURAL RELATED FOR SALE

Duncan Direct Drill, 20 tyne. Good order. \$3,500. Ph 4844 6250

Stockcrate 1.8 x1.8 x1.2 galvanised 40 x 40mm, Good for sheep or calves, sliding rear roller door VGC -\$500 o.n.o. Ph 0412 421 464

Sisal Baling String 4 x 2 packs \$180.00 ph 4844 5344

Mag MATE PRO 200 migwelder with cyclinder \$700 ph 4844 5344

WANTED

Knitting wool for volunteer knitters for charity. Any leftover wool, any ply, gratefully accepted. Ph Denise 4844 5087

Our Advertising Charges

Classifieds - Personal (maximum 2 lines)	FREE	
	Month	Year (11 issues)
Small advertisement (business card size)	\$ 6.50	\$ 65.00
Quarter page advertisement	\$12.00	\$120.00
Half page advertisement	\$25.00	\$250.00
Full page advertisement	\$50.00	\$500.00
Double page discount	\$90.00	
Inserts - \$40.00 for 400 inserts into hard copies		
Typesetting of adverts: \$50		

PAYMENT:

Cheques: payable to *Windellama News*
PO Box 705, Goulburn. 2580

Direct Deposit or EFT: IMB Ltd; BSB 641.800;
A/c 200045794 with Name & advert as detail

*** Unpaid adverts will be cancelled
after one month**

*** All advertising copy must be
accompanied with payment**

All advertising enquiries to Denise Johnson

Fees for Hire of Hall or Supper Room at Windellama Hall

*HALL	ALL DAY	\$200
	DAY 4hrs or less	\$100
	EVENING/NIGHT**	\$200

*Includes Supper Room & Kitchen

** \$2 per hour for heating

SUPPER ROOM (Includes Kitchen)

ALL DAY	\$80
DAY 4hrs or less	\$40
EVENING/ NIGHT	\$100

Use of the premises prior to your booked
function will incur a surcharge of
Supper Room Fee

**To Book please ring W. P. A. Secretary,
Frances Knights on 4844 5157**

TARAGO TRANSFER UPDATE & DRUM MUSTER STATION

**Open Friday to Monday
8.00am—4.45pm.**

**Card required for household waste,
or fees apply.**

Free recycling of the following:
Plastics, tins, oil, batteries, glass,
paper and cardboard.

**Free recycling also of Drum Muster
Chemical Drums providing they are
empty, triple washed and have the lids
removed**

Tipping Fees for Tarago

Sorted Waste - Domestic Residents only

Car, station wagon, small ute or small trailer	\$ 16.00
Medium trailer, large ute or 1-tonne truck load	\$ 21.00
Large trailer load	\$ 33.00

Unsorted Waste and Non-Residents Waste

Garbage & trade waste (uncompacted, per cubic metre)	\$ 78.00
Garbage and trade waste (compacted, per cubic metre)	\$ 133.00
Other unsorted waste— 2 x sorted rate per category	

Hard fill demolition waste not accepted at Tarago

Animals — Note: *Animal carcasses cannot be
dumped at Tarago as there are no facilities for burial
please refer to Goulburn Mulwaree Council for details
on availability in this area.*

Car Bodies	\$ 56.00
Tyres — Car Tyres (each) - per tyre	\$ 11.00
Motorcycle tyres (each)	\$ 9.00
Truck tyres (each) - per tyre	\$ 26.00
Tractor tyres (each) - per tyre	\$ 95.00

COMMUNITY INFORMATION

Windellama Progress Association

Lloyd Turner (President) 4844 5214
Frances Knights (Secretary) 4844 5157

Windellama Rural Fire Brigade

Rex Hockey (Captain) 4844 5147
Graham Kinder (President) 4844 5330
Ellen Sylvester (Secretary) 4844 5407

Windellama Field Day Committee

Heather Caulfield (Secretary) 4844 5120
Frances Knights (Treasurer) 4844 5157

Windellama News

Christine Woodcock 4844 5843
Lyn Jones (Editor) 4844 5843
Gayle Stanton (Editor) 4844 5156

Windellama Garden Cub Inc.

Pam Williams (Secretary/Treasurer) 4844 5194

Windellama Hall Country Markets

Bob Shaw 4844 5001

Windellama Historical Society

Rex Hockey (President) 4844 5147
Julian Woods (Secretary) 4844 5270

Windellama Landcare

Warren Yates (President) 4844 5350
Sandra Greville (Secretary) 4844 5047

Windellama CFR

Kevin Muffet 4844 7143

Windellama School P&C

Shelly Andrews (President) 4844 5630
Heather Caulfield (Secretary) 4844 5120

Willow Glen Gardeners

Warren Yates 4844 5350

Wires (wildlife rescue)

Marian Pearce 4844 5244
Southern Tablelands WIRES 4822 3888

Justice of the Peace

Linda Shannon 0429 980 141
Geoff Burns 4849 4330

Nerriga PSA

Helen Rolland (President) 4845 9115

FOR ALL EMERGENCIES

eg. FIRES / ACCIDENTS

PHONE 000

For Mobile users & Landlines



Important Phone Numbers

Rural Fire Brigades



Windellama	Rex Hockey	4844 5147
Tarago	Ken Vassel	4849 4652
Taylor's Creek	Dave Elward	4849 4240
Mt Fairy/Boro	Mike Welford	4849 4623
Bungonia	Craig White	0407 718607
Nerriga	John Rolfe	4845 9160
Bushfire Information		1800 059 333

www.windellamarfs.com.au or www.rfs.nsw.gov.au

WINDELLAMA PH: 4844 5359 or

CHANNEL 21/209 Base

AMBULANCE

Ambulance Booking
Goulburn Ambo Station



000

13 12 33
4827 0444

Windellama SES

Kevin Muffet
Poison Info. Service
Goulburn Base Hospital

132 500

4844 7143
13 11 26
4827 3111

Police

Tarago Station -
Snr. Constable Brad Carey
Goulburn



4849 4411
4824 0799

Other

Goulburn Railway Station	4828 5816
Train info & bookings	13 22 32
www.countrylink.info	
Country Energy - interruptions	13 20 80
Lifeline	13 11 14
Kids Helpline	1800 551 800

July 2014

MON	TUE	WED	THU	FRI	SAT	SUN
	1 Willowglen Gardeners	2	3 School Playgroup	4	5 Nerriga Cake Stall	6
7 Exercise @ Hall	8	9	10 School Playgroup	11	12 Progress AGM	13 St. Bart's
14 Exercise @ Hall	15 Craft Arvo	16	17 School Playgroup	18	19	20 Windellama Hall Country Markets
21 Progress Meeting Exercise @ Hall	22 Craft Arvo	23 Nerriga Gardeners	24 School Playgroup	25	26	27 St. Bart's
28 Exercise @ Hall	29 Craft Arvo	30	31 School Playgroup			

**For details of times and places - see articles inside this issue
Emergency phone numbers are on the back of this page.**