

## Goulburn Regional Art Gallery

13 October-10 November *Echoes of Home: Memory and mobility in recent Austral-Asian art* Curated by Christine Clark for the Museum of Brisbane, this travelling exhibition presents recent works by 14 Asian artists who have made their home in Australia. Drawing on the artists' own stories and experiences, the exhibition represents a diverse range of art media including textiles, ceramics, fashion, jewellery, paper, sculpture and painting. The artists include Keiko Amenomori-Schmeisser, Dadang Christanto, Jaishiree Srinivasan and Savanhdy Vongpoothorn. The exhibition is supported by the Commonwealth Government through the Australia Council and Visions of Australia.

15-24 November *Goulburn Region HSC Body of Work* Working with regional secondary school art teachers, the Gallery presents a selection of bodies of artworks made by regional students for the 2007 HSC. The exhibition addresses the meaning of a body of work and what is required of it.

29 November-13 December *Owning our School* Mulwaree High School's *Owning our School* sculpture project has students making sculptures to enrich their school environment. This exhibition showcases their work and, through a silent auction, raises funds to continue the project.

**ART EXHIBITION  
& SALE**

*"Our Feathered Friends"*

works by **Ekaterina Mortensen**  
of Quialigo  
in her 3rd Solo Exhibition  
at the **Goulburn Club**  
19 Market St, Goulburn

**OPENING**  
Friday 16<sup>th</sup> November  
from 5pm

**ALL WELCOME**  
Exhibition is on 16/11/07 - 22/12/07

*Paintings make great Christmas gifts!*

## **Goulburn & District Arts & Crafts Inc.**

Cnr Bourke & Verner Streets  
**GOULBURN**



### **Life Drawing**

Model's fee divided amongst participants

### **Saturday 24 November**

Phone: Elaine Cornwell 4821 2440

Daphne Gooley 4821 1708

### **Saturday 17 November 10am**

**Pointed Pen Uncial** Play with this lovely version of Uncial, using colour, circles and spirals to create things with a Christmassy theme.

Phone: Alison Lawrence 4822 0024

Or email [alisoncallig@bigpond.com](mailto:alisoncallig@bigpond.com)

### *Artists of the Month*

We spotlight an individual artist's talents in our gallery each month.

### **Goulburn High School**

18 October – 14 November Textiles

### **Members' Christmas Tree Decorations**

15 November – 27 December

### *Studio 1*

25 October – 8 November

Life Drawing Exhibition

Recently, Daphne Gooley, Printmaker and Carol Divall, Textile Artist, had successful exhibitions at the Goulburn Regional Art Gallery.

Come and learn some of their secrets at the following courses:

**Printmaking** **\$20**

**Tuesday evenings -13 & 20 November**  
**6.30pm - 9pm**

Make a greetings card using relief print techniques. Materials provided, except paper.

Phone: Daphne Gooley 4821 1708

**Felting** **\$50**

**Sunday 18 November 10am – 3pm**

Let your imagination run riot and create a hat or bag which will be sure to be noticed.

Materials supplied.

Phone: Carol Divall 4821 2572

One of the paintings by Ekaterine Mortensen on exhibition at the Goulburn Club

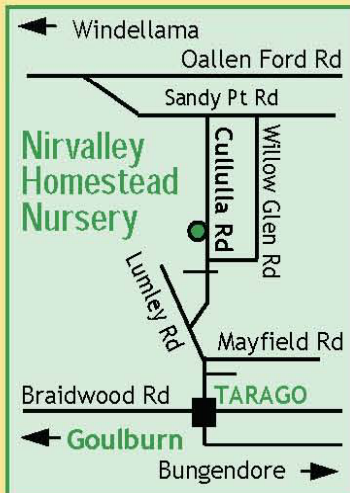




# Nirvalley Homestead Nursery

629 Cullulla Road, Tarago • 4849 4481

**We are a cool climate specialist nursery,  
locally owned and run. All stock is grown locally  
and acclimatised to local conditions**



- Native and exotic shrubs
- Windbreak and hedging plants
- Unusual trees and plants
- Advanced trees
- Farm trees
- Tube stock
- Special orders

**Peter & Caroline Campbell**  
• Gift Vouchers available



Open Friday 10am-3pm, Saturday, Sunday or call in when the sign is out. Mob: 0422 112 779

## Highland Stockfeeds

**223 Brisbane Grove Road**

- Variety of small bales of hay
- Stockfeeds
- Mineral Blocks
- Dog & Cat Food

**0428 223 677**



## SHEPHERD'S HILL NURSERY

**321 George St, Marulan**

**Ph 4841 1404**

Fax: 4841 1454 Mobile: 0413 047 105

*Look for the house on the hill*

For all your garden needs &  
acclimatised plants

Potted colour, Seedlings, Bulbs, Fruit trees,  
Ornamental trees, Windbreakers,  
Shrubs and more  
Potting Mixes & quality soils & mulches.  
Pots, Statues & Gifts

**Gift vouchers & Eftpos available**

We are members of NGINA

Nursery & Garden Industry NSW & ACT



## *In Your Garden*

From Irene Turner



### **Vegetables** to plant now

Seeds of beans-climbing and dwarf, carrots, beetroot, radishes, parsnips.

Seedlings or seeds – cabbages, silver beet, herbs, cucumber, squash, zucchini, pumpkin, capsicum, sweet corn, celery, lettuce.

Tomatoes – but cover if we get a frost.

### **Flowers**

Seed or seedlings – ageratum, asters, carnations, cosmos, dahlia dwarf, linaria, lobelia, marigold, nasturtium, petunias, phlox, portulaca, snapdragons, and verbenas. Amaranthus, celosia, cockscomb, coleus, gazanias and zinnia.

Roses – check for aphids and black spot. You can spray with rose spray or just squash the aphids with your fingers, or hose off.

Cherry Trees – fruiting and ornamental, can be attacked by cherry slug. If small in numbers don't worry. You can spray with lime made into a liquid form, about 1 cup of lime to a bucket of water. Also if branches are low, cover with baby powder or dust with lime.



### **Plant of the Month**

#### **Kalmia (Calico Bush)**

Native to the American mountains, the Kalmias are a small genus of evergreen shrubs that enjoy exactly the same conditions as their Rhododendron relatives; part shade, humidity, an acid soil rich in leaf mould and plenty of water. The laurel-like leaves are dark and glossy. The flowers are white, red or apple-blossom pink. They have a curious sticky feel and are borne profusely at the ends of last season's growth during spring.

Kalmias are hardy and will survive temperatures well below -18°C. They need frosty winters to do well. They develop into a broad, densely foliated shrub, 2-3 metres and about as wide, slow growing.

Plant out in late spring or early autumn and don't prune except to remove faded flowers. They are best propagated by layering new wood in late summer, but may also be struck from cuttings, though this is far less reliable.



### **Glycerine & Rosewater Cleansing Cream**

(for dry & normal skins)

Waxes are melted in one container while oils are warmed in another. All ingredients should be about the same temperature when you mix them together or the mixture may curdle. You can substitute any suitable herbal infusion for the rosewater.

4 tblsp (60ml) lanolin

3 tblsp (45ml) rosewater

50ml almond oil

1 tsp (5ml) zinc oxide ointment

1 tblsp (15ml) glycerine

6 drops essential oil of rose

1/8 tsp (0.65ml) borax

1. Melt the lanolin and gently heat the almond oil and glycerine together.
2. Slowly pour the oil and glycerine mixture into the lanolin, beating constantly.
3. Dissolve the borax in the warmed rosewater and add gradually to the lanolin and oil mixture, beating all the time.
4. Leave to cool.
5. When cool and creamy, beat in the zinc oxide and rose oil.
6. Spoon into prepared jars and label.

# JKM Excavations

- House sites • Tank sites • Dam desilting
- Road works • Bulk Earthworks • Trenching

**Competitive Rates**

0429 636 743 or A/H (02) 6238 0113

# C OVAN REEK ONSTRUCTIONS

## J & J ARBALIS

LICENCE No. 64844C

ABN 43419374203

**CONCRETE STENCILLING**

**BUILDING CONSTRUCTION**

**CONCRETE & MINI-MIX SUPPLIER**

**20,000 Gall. CONCRETE WATER TANKS**

PHONE / FAX **4849 4448**

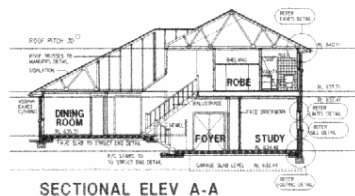
or Mobile **0409 330 914**

or **0428 164 572**

## ACOM DESIGN

PO Box 806,  
Goulburn 2580

Yarralla,  
Oallen Ford Rd  
Bungonia 2580



**Robert C Everingham**

*Building Designer & Draftsman*

**New Homes, Alterations & Additions**

**Duplex, Villa, Townhouse Developments**

**Rural, Commercial, Industrial Buildings**

Free Quotes - Competitive Rates - Prompt Service

Energy Efficient (SEDA), Eng Dwgs: Mech, Struct, HVAC

**TEL 4844 4321**

**MOBILE 0417 682 022**

**FAX 4844 4323**

**EMAIL [acomdesign@bigpond.com.au](mailto:acomdesign@bigpond.com.au)**



MEMBER  
STANDARDS AUSTRALIA



MEMBER  
BUILDING  
DESIGNERS  
ASSOCIATION  
OF NEW SOUTH WALES INCORP

## D & J RIGOLI



**HANDYMAN SERVICES**

**&**

**PROPERTY MAINTENANCE**

ABN 43002820238

**INTERIOR LINING**

**SMALL RENOVATIONS**

**SHED TO HOME CONVERSIONS**

**PERGOLAS**

**VERANDAHS**

**PAINTING**

**TILING**

**PAVING**

**And much more...**

**no job too big or small !**

**Will beat any reasonable quote**

**Mobile: 0419 492 799**

**Ph: 48 445393 Fax: 48 445163**

**[www.djrigolihandymanagementservices.com.au](http://www.djrigolihandymanagementservices.com.au)**



### WEED CONTROL AND FERTILISING FOR FARM FORESTRY

Weed control is probably the most important technique to get right when establishing either pines or natives. The importance of weed control cannot be emphasised enough. This is because weeds compete with the young trees for both moisture and nutrient, and as weeds are often more shallow rooted than trees, they get moisture and nutrient before the trees. Most commonly, weed control is done through the application of herbicides, as this is the quickest and most efficient method. However, weed control can be carried out by mechanical methods, and the use of mulches.

Weed control can be carried out either pre or post planting, or a combination of both. Pre plant weed control is best with a broad spectrum knockdown herbicide, such as Glyphosate (Roundup), which may be combined with a residual herbicide for a longer lasting suppression of weeds. The best residual for native species is Simazine, while the best residual for pines is Hexazinone (Velpar). Pre plant weed control is best carried out with a spray unit spraying over the entire rip/mound line. The best time for a pre plant herbicide application is early to mid autumn, when there is still some soil warmth and weeds are still actively growing.

Post plant weed control is more difficult, but if there are weeds competing with the young trees, it is still essential. A herbicide that does not harm the young trees is required, such as Simazine for natives, and Hexazinone for pines. Glyphosate can still be used, but care must be taken to shield young trees from any of the herbicide getting on the foliage by shielding the tree. Post plant herbicide application can be carried out as a spot application around each tree, which lowers the herbicide cost.

There are also some granular herbicides on the market which are easy to apply with an applicator, such as a "Weed-a-metre". These granular herbicides include products such as Forestmix for pine, and Eucmix for most native species. All post herbicide application must be carried out four weeks after planting, but before the soil temperature gets too high, as damage can result otherwise. This is not a problem with pines, as they are planted over winter, but can be a problem with natives which are usually planted later. It is for this reason that a pre plant herbicide application is preferable with natives.

Whenever applying herbicide for weed control, it is critical that the directions on the label be followed

to ensure a good result. Other methods of weed control can include mechanical removal of weeds (back breaking and soul destroying), and the use of mulches around young trees to prevent emergence of weeds. Neither of these methods is time or cost effective with a larger plantation.

And remember, the first three steps to successful tree establishment are weed control weed control and weed control!!!!

Once the weeds are under control, then newly planted trees should receive an adequate dose of fertiliser. The young seedling needs to be actively growing to best utilise the fertiliser, and the best time to apply fertiliser is early spring. If applied to early, much of the fertiliser will be lost through leaching past the roots before they can take it up.

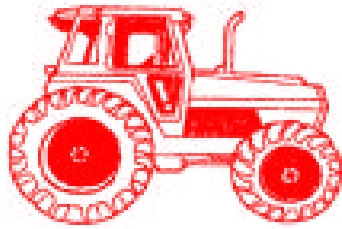
Both native and pine trees commonly require nitrogen and phosphorus for root and shoot development. However, some natives, such as Acacias and Casuarinas are leguminous. That is, they are nitrogen fixers (able to utilise atmospheric nitrogen), hence they will only require an application of phosphorus. Most rural supply stores will be able to provide a proprietary mix containing nitrogen and phosphorus, and products such as Starter DAP and Starter FOS are good for use on young trees. For the nitrogen fixing natives, an application of superphosphate is all that is required.

Care must be taken in the application of fertiliser, as it can burn young trees. A dose of 150 grams per tree, placed in two semi circles either side of the tree at a distance of 15 to 20 cms from the stem gives the best result. If the trees are on a slope, then the fertiliser should not be above and below the tree, but level with the tree on either side. This is to prevent the fertiliser being either washed into the tree stem, or away from the stem.

The best way to apply the fertiliser is with a cup and bucket. Weigh the cup, then add 75 grams of fertiliser (one semi circle, or half the 150 grams per tree), and mark on the cup where the 75 gram mark is. Then it is a matter of placing two 75 gram semi circles around each tree from a bucket full of fertiliser. It is also best to wear gloves, as fertilisers can string cuts and abrasions on hands.

There are also some trace element fertilisers for young trees. In the Southern Tablelands, the most essential trace element is Boron, which should be applied in the second year after planting. About 40 grams per tree is required, and there are suitable commercial products such as Agribor available on the market. Again, timing is critical, because if Boron is applied when there is green grass close to

**A.F. & M.R. DAVEY  
TRACTOR &  
MACHINERY REPAIRS**



*"IF IN DOUBT, GIVE ARTHUR A SHOUT"*

**ARTHUR DAVEY**

**PH: 4822 8441**

**MOB: 0409 651 517**

274 Mountain Ash Road, Goulburn

**AARON'S MINI EXCAVATIONS**

ABN 84197940351



**4 in 1 Bucket  
Postholes  
Trenches  
Levelling**

**Fits through 1 metre opening!!**



**Phone: 02 48411 862**

**Fax: 02 48411 395**

**Mobile: 0418 111 862**

**GJ & AT CASSIDY  
Farm Services**

For all your small farm needs including:

- \* New Fences
- \* Weed Spraying
- \* Repairs to existing fences
- \* Mustering
- \* Stockyard design and erection
  - \* Stock Work
  - \* Lamb Marking

**Call Butch on  
0438 818815  
for a quote**

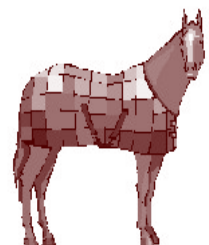
*Smart  
Stitch*

*Enquiries Welcome*

*Christine Sykes*

*Ph: 4844 5594*

*Windellama*



*Horse Rug  
Repairs*

Rugs MUST be free of mud & poo  
or a surcharge will apply

**For only \$6.50 casual**

**Or**

**\$32.50 for 6 months**

**Or**

**\$65.00 annually**

**You can advertise here!**

# CHURCH NEWS

## Catholic Church Services

Parish Priest: Fr. Tony Percy  
 Assistants: Fr. Damien Styles &  
 Fr. Francis Kolencherry

Contact 4821 1022

\*\*\*\*\*

There are no regular Masses in **Marulan**

\*\*\*\*\*

Mass times in **Goulburn** are:

Saturday vigil Mass 5pm. at  
 St. Peter & Paul's Old Cathedral  
 Note the earlier time during winter

Sunday 8am. at Fatima, North Goulburn

Sunday 10 am. at Sts. Peter & Paul's.

### **St. Joseph's Church, Tarago**

11th November 10.30am Mass

25th November 10.30am Holy Communion

Enq: 4842 2444



GOD'S REMNANT ASSEMBLY AUSTRALIA (GRA Australia)

Would you like to know more about Jesus?

Do you want to know the LIFE He has for you -

your destiny, your gifts, your purpose?

We are a husband and wife team with GRA, a trans-denominational missionary movement. GRA works around the world, including Iraq, Iran, Afghanistan, Nigeria, Sudan and is new to Australia. We believe Australia needs the Word, fresh and new, as it is being shared around the world and setting lives alight with the beauty and Truth of Jesus.

We have started a home Church in our community and introduce ourselves – Bunja and Judith Smith. If these words have stirred or touched you please contact us to hear more about this Ministry that is new to Australia:

by phone - **0401 912 193** or by post -

**Pastors Bunja and Judith Smith**

**Gods Remnant Assembly Australia**

**GPO Box 1695**

**Canberra City ACT 2601**

**Be part of this exciting work in our community:**

**Sunday morning** - we sing and study His profound truths

**Tuesday evening** - we plan the ministry, outreach and study His Word

**Thursday evening** - we praise and enjoy a power prayer hour.

**Jesus' love never fails. John 15 : 12**

## Anglican Church Services

### **November**

*St. Mark's - Bronte*

Sunday 11th 11.30am

*St. Bartholomew's - Windellama*

Sunday 25th 11.30am

### **December**

*St. Mark's - Bronte*

Sunday 9th 11.30am

*St. Bartholomew's - Windellama*

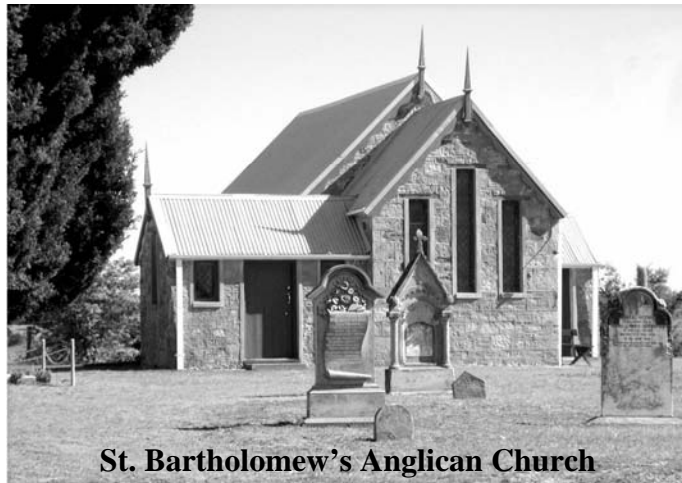
Monday 24th **8pm Xmas Carols**

### **Notices**

Our Xmas luncheon will be held on the  
 11<sup>th</sup> December at "Fassifern" Windellama  
 Road Windellama at 12pm

Our Rector Robert Lindbeck may be  
 contacted on 4821 3631

Although both our Churches are nominally  
 Anglican, worshippers of all denominations  
 are welcome at all services.



**St. Bartholomew's Anglican Church**

### **STFFN - Continued from previous page**

the plant, then the grass will take up the Boron. Late summer is the best application time for Boron.

So if the site preparation is good, the planting has been properly carried out, and then if the weed control and fertilising is done properly, sit back and watch your trees grow.

Finally, the Southern Tablelands Farm Forestry Network is available to help with advice on all aspects of farm forestry. Have a look at our website, [www.stffn.org.au](http://www.stffn.org.au), or become a member (membership is free).

# Just LAW

## Tarago Office

4 Wallace Street, Tarago NSW 2580  
Ph: 0409391211 Fax: +61(2)83234231

Office hours 9am - 3pm Tuesdays & Fridays  
*Please phone for an out of hours appointment*  
Suzanne McDonald, Solicitor

BUNGENDORE OFFICE ERINDALE OFFICE  
36A Ellendon St NSW 2621 Erindale Chambers ACT 2903  
Ph: (02)62380192 Ph: (02) 62314700



# JOHNSON & SENDALL

INCORPORATING MULLENS

SOLICITORS ~ CONVEYANCERS

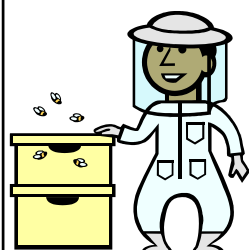
13 MONTAGUE ST GOULBURN 2580

PH (02) 4821 1588

FAX (02) 4821 9850

## CYPRESS HILLS APIARY PRODUCTS

Bee Swarms Collected  
Honey & Beeswax Products for sale



### BOB SHAW

3225 Oallen Ford Road,  
Windellama

Phone: 4844 5001



## Southern Districts Piano Service

Pianos • Pianolas • Tuning • Repairs  
Re-polishing • Removals

*Graham Price*

**02 4844 5329**

## COUNSELLING

(Especially Post Natal Depression & Trauma)

Reiki

Australian Bush Flower Essences

Products available:

Combination Essences

Herbion

Phone Anna 4849 4304

*Need a Plumber Call. . .*

## GRAHAM MOON

Lic. No. 194029C



Plumber - Drainer - Gas Fitter

Roof Plumber - L.P. Gas

DOMESTIC & COMMERCIAL - 7 DAYS

Phone **0428 223 677**

## LOCAL ELECTRICAL CONTRACTOR

Lic. No. 174303C

24 Hour prompt service - Free Quotes

### RON WENBAN

Mob: 0428 445259

Ph: 4844 5259

Fax: 4844 5617

\*Rural \*Domestic \*Industrial \*Commercial

\*Test & Tag tools & appliances



## BRIAN'S AUTOSCREENS & GLASS

Mirrors • Showers  
Mirror Wardrobes

Windscreens • Glass

Security Screens etc.

440 Auburn St Goulburn

Ph 4821 2633

Fax 4821 9133

# Community Contacts

## Windellama Progress Association

Cathy Meehan (President) 4844 5554

Frances Knights (Secretary) 4844 5157

## Windellama Rural Fire Brigade

Lynton Roberts (Captain) 4844 5118

Bev McGaw (Communications) 4844 5147

Sue Roberts (Treasurer) 4844 5118

## Windellama Field Day Committee

Judy Alcock (Exec Officer) 4844 5188

## Windellama News

Denise Johnson (Editor) 4844 5087

Cathy Meehan (Sec / Treas) 4844 5554

## Windellama Garden Cub Inc.

Lynn Stockford (Sec / Treas) 4844 5029

Colleen Ellis 4844 5207

## Windellama Hall Country Markets

George & Annemarie Webb 4844 5038

## Windellama Historical Society

Sandra Greville (Secretary) 4844 5047

Joanna Croker 4844 5125

## Windellama Landcare

Mick Ryan (President) 4844 5012

Shirley Cornish (Secretary) 4844 5101

## Windellama School P&C

Kelly George (President) 4844 5563

Heather Caulfield (Secretary) 4844 5120

## Nerriga Landcare

Di Roberts (President) 4844 5344

Helen Rolland (Secretary) 9555 8676

## Nerriga Rural Fire Brigade

John Rolfe (Captain) 4845 9160

Justin Parr (Snr. Deputy Captain) 4845 9129

Marie Kennedy 4845 9126

## Jacqua Creek Landcare

Sue Armstrong (Secretary) 4844 4364

Ken Moran (Chair) 4844 4234

## Wires (wildlife rescue)

Marian Pearce 4844 5244

Southern Tablelands WIRES 4822 3888

## Community Health Goulburn

4827 3913

## Community Transport

4823 4499

## Justice of the Peace

Linda Shannon 0429 980 141  
"Stirlingbrae" 3186 Windellama Road, Windellama.

**FOR ALL FIRE  
OR EMERGENCIES  
PHONE 000**



## Important Phone Numbers

### **Rural Fire Brigades**

Windellama	Lynton Roberts	4844 5118
Tarago	Des Kingston	4849 4503
Taylors Creek	D Elward	4849 4240
Mt Fairy	Greg Brooke	0429 425 840
Bungonia	Ian Tapper	4844 4460
Gundary	Dennis Borlan	4821 6821
Nerriga	John Rolfe	4845 9160

**PHONE 4844 5359 or  
CHANNEL 21/209 Base**



### **Windellama SES First Aid**

Graeme McFarlane	4844 5506
Kevin Muffet	4844 7143

### **Police**

Tarago Station - Constable Gerard Hespe	4849 4411
--	-----------

### **Goulburn Base Hospital** 4827 3111

### **Ambulance** 000





**For Mobile users  
in case of emergencies dial  
112**

**And it will be treated as a 000 call**



# November 2007

MON	TUE	WED	THU	FRI	SAT	SUN
			1	2	3 <b>Small Farms Field Day</b>	4
5 Bungonia Quilters  School P&C meeting	6 <i>Melbourne Cup</i> Willowglen Gardeners  Windellama Cup	7 	8	9 Kindergarten orientation	10	11 St. Mark's - Bronte
12 Bungonia Quilters	13 Hall craft arvo	14 School Afternoon Show  Windellama Garden Club Meeting	15	16	17 <b>Country Fair</b>	18
19 Bungonia Quilters	20 Hall craft arvo  Progress Meeting	21	22	23 Kindergarten orientation	24 Basic Firefighting Course	25 St. Bart's - Windellama  Basic Firefighting Course
26 Bungonia Quilters	27 Hall craft arvo  <i>4 weeks to xmas</i>	28 School Afternoon Show	29	30		

**For details of times and places - see articles inside this issue**