

THE WINDELLAMA NEWS

Windellama

Progress Association Hall Inc.

Vol. 22 no. 9– October 2018

Editorial & Layout: Gayle Stanton & Ros Woods

Sec/Treas: Ray Plant

www.windellama.com.au



Salter's House 1870

Published Monthly

Hard Copy Distribution 400 - Website : 6,000 average/month

Windellama, Oallen, Nerriga, Bungonia, Mayfield, Quialigo, Lake Bathurst, Bungendore & Tarago

WINDELLAMA SMALL FARMS FIELD DAY

25 YEARS AND STILL GOING STRONG!

SATURDAY 3RD NOVEMBER 2018 | 9am - 4 pm

WINDELLAMA HALL, CNR. OALLEN FORD & WINDELLAMA ROADS, WINDELLAMA



DON'T MISS THIS EVENT!

- COMMERCIAL EXHIBITS
- INFORMATIVE DEMONSTRATIONS
- FRIENDLY EXPERTS READY TO ANSWER YOUR QUESTIONS
- HANDMADE CRAFTS
- LOCAL PRODUCE
- CHRISTMAS GIFTS
- MARKET BARGAINS
- ANIMAL NURSERY
- CHILDREN'S ACTIVITIES
- PONY POO COMPETITION
- LIVE MUSIC
- EDUCATIONAL WILDLIFE SHOW
- ROCK CLIMBING WALL

www.windellama.com.au



Vcolia Mulwaree Trust



Coming Events...

Annual Subscriptions - please send your details and **\$30** (cheques payable to 'Windellama News') to cover the annual cost of postage.

All cheques please post to:

The Secretary, PO Box 705, Goulburn. 2580

* Unpaid subscriptions will be cancelled after one month

If you have any short articles, anecdotes, or something else interesting about yourself, your family, or the community; please write it down and drop it in our letterbox at the Hall. We will edit it and publish it in the Windellama News.

A LOCKED POSTAL BOX IS AT THE FRONT OF THE HALL, 3444 OALLEN FORD RD, IN THE STONE WALL FOR THE COLLECTION OF ITEMS FOR PUBLICATION

Items left in the box after the deadline will not be collected or included in the News

Articles, adverts, etc may also be sent by email to:

newswindellama@gmail.com

Adverts sent by email will not be inserted unless payment is received by the deadline.

October

4 Progress meeting at the hall at 4.00 pm

9 Community Outreach meeting 6.30 pm

12 STAC Meeting at Hall 6.00pm

20 P & C Trivia Night at the Hall

November

3 Small Farms Field Day

24 Windellama Movie Night @ Windellama Hall

Our Policy on Receipts

The Windellama News makes out a receipt for all advertising payments made to the paper. We don't post out receipts to save cost and we assume that the appearance of the advertisement in the paper could normally be taken as proof of payment. If you require a posted receipt please include a stamped self-addressed envelope with your payment.

It would be greatly appreciated if anyone sending money to the Windellama News would include their name and address and a note saying what it was for and put it in a sealed envelope. This would avoid a lot of confusion and uncertainty.

Notice to advertisers, article submitters & readers

The Windellama News is published and authorised by the Windellama Progress Association Inc. Whilst every care has been taken in the production of the News & publishing to the web page on the community website, the editor takes no responsibility for any inaccuracies, errors or omissions. All such contributors by forwarding advertising, notices, & articles, agree to indemnify the publisher & warrant that the material is accurate & neither deceptive nor misleading, in breach of copyright, defamatory or in breach of any other laws & regulations.

The responsibility for advertisements complying with the Trade Practices Act lies with the person, company or agency submitting such for publication. Original material appearing in this newsletter is copyright. It may be reproduced in part or in whole for the benefit of the community, provided that the source of the material is fully acknowledged. If you have any queries about using material from the Windellama News, please contact the editor.

Inside this Issue.....

Community Noticeboard	3
Land Care	5
SES	7
Nerriga	9
Windellama Movie Night	11
In Your Garden	13
Tom Bryant Historical	15
Windellama Garden Club	17
Windellama Fire Brigade	19
WIRES	21
Willow Glen Gardeners	23
Southern Tablelands Athletics Club	25
Men's Shed	27
Historical Society	29
Classified Ads	31/32
Church Information	33
Community Information	35
Calendar	36

DEADLINE FOR ALL ISSUES IS THE 20TH OF THE PRECEEDING MONTH

YOUR WINDELLAMA NEWS IS PRINTED BY BUSINESS REQUISITES, GOULBURN

Community Notice Board



Registrations are now open for the 2018/19 Little Athletics Season. Visit our new website to register

www.southerntablelandsathleticsclub.org or contact our registrar Gill Shepherd on 0419639254 or via our facebook page for more information.

Community Outreach Meeting at the Windellama Hall on Tuesday 9th October.
Meet members of the Goulburn Mulwarre Council and have a chance to be heard.
Meeting starts at 6.30 pm and a light supper will be served.

Windellama Progress Association

The next Windellama Progress Association meeting will be held at the Windellama Hall on Thursday 4 October at 4.00 pm. All Welcome

WINDELLAMA SMALL FARMS FIELD DAY

CO-ORDINATING TEAM 2019

At the conclusion of the 2018 Small Farms Field Day the present co-ordinating team (of 2) will finish up.

Here is the chance for someone or a team of people who wish to see this great Community Event continue.

If interested, come and observe the running of the 2018 Small Farms field Day on 3rd November in order to facilitate your knowledge or the day and planning for 2019.

If interested ring Gary on 48445545

Congratulations to Bob Kirk on being re elected Mayor and Councillor Peter Walker becoming Deputy Mayor. We are looking forward to working with you!

Quiz Night at Windellama Hall

- ★ Windellama P&C is fundraising for the school. We are holding a Fun filled trivia night.
- ★ There will be prizes, silent auctions and raffles. Tables are limited to 10 people max and a minimum of 6 with a cost of \$15 per person.
- ★ There will be a food platter provided for each table, with BYO drinks. If you can't make up 6 people for a team, don't worry, register and we can team you up with others to make a table.
- ★ There will be a movie screening for primary aged children, BYO seat or bean bag. Popcorn and a drink will be available for purchase for \$5.
- ★ Bring along extra cash to be able to buy clues, correct answers, raffle tickets and participate in the auctions.
- ★ Auction Items and prizes will be listed closer to the event.
- ★ TO BOOK A TABLE ASAP Contact Shelly on 48445630 or 0408860107 or email jandsandrews@skymesh.com.au

◇ **BURNING OFF? - Permits now required. Bushfire Danger Period**
◇ **1 September 2018 to March 31 2019**
◇ **See page 19 for more details**

Dates for Community Outreach Meetings

The Community Outreach Meetings are a great opportunity to meet Goulburn Mulwaree Councillors and senior staff, and discuss Council related matters with them.

A light supper will be served after each meeting.

2018 Community Outreach Meeting Dates

- | | | |
|------------------------|------------------------------|--------|
| • Thursday 4 October | Middle Arm (RFS Shed) | 6.30pm |
| • Tuesday 9 October | Windellama (Windellama Hall) | 6.30pm |
| • Tuesday 16 October | Goulburn (Council Chambers) | 5.30pm |
| • Thursday 25 October | Marulan (Marulan Hall) | 6.30pm |
| • Tuesday 30 October | Parkesbourne (Church Hall) | 6.30pm |
| • Tuesday 13 November | Tarago (Community Hall) | 6.30pm |
| • Thursday 29 November | Towrang (Community Hall) | 6.30pm |
| • Thursday 6 December | Tallong (Memorial Hall) | 6.30pm |
| • Tuesday 11 December | Bungonia (Community Hall) | 6.30pm |

If you have any questions you would like raised at the meetings please contact Executive Officer to Mayor & General Manager on 4823 4486 or by emailing council@goulburn.nsw.gov.au.

NERRIGA HOTEL



Pub opens at 10am, 7 days.

Meals – Kitchen open for lunch (12-3pm), 7 days
& dinner (6-8pm) Fri, Sat and Sun

Coffee shop – Open Friday & Monday (6-11am)
Saturday & Sunday (7-11am)

Accommodation – self-contained cabins available

Live music – on the last Sunday of every month in the afternoon and every now and then on a Friday night. Check out our facebook page for details of upcoming gigs.

Functions – We can cater for special events, give us a call to discuss.

Beer garden **Open fires** in winter **Take away** alcohol available

6124 Nerriga Road, Nerriga NSW 2622 nerrigahotel@hotmail.com
Ph 02 4845 9120 www.nerrigahotel.com

Like us on
Facebook



The BUS TRIP on Saturday 17 September went ahead with a bus load of locals sharing the sights and stories of erosion control with David Hilhorst in Windellama, truffle growing in Tarago with Anne & Denzil Sturgiss and the operation and benefits of worm farming from Cid Riley. The day started off with the sun shining and a slight breeze as we enjoyed a morning tea under the gum trees at The Paddock before exploring the “nick” – home to many wombats – but still holding up: that is, the erosion

has been contained and vegetation, such as it is, is present. Everything is rather dry. Then on to the truffle farm, and Denzil and his dog, Dusty, led the tour among the oaks and hazels, giving us the history of the truffière, with its trials and benefits and beautiful big black prizes. Lloyd cooked up a great barbeque which we shared in the sun at the truffle farm. Next, on to see Cid Riley’s worm farm, which was a very informative experience, showing us another way to wage the war on waste, with his worms gobbling up discarded school-ground sandwiches. It was becoming colder and voluminous grey tinged clouds began rolling overhead – which meant onto the bus and back to Windellama Hall.

Thanks to Bec from Upper Shoalhaven Landcare Council and David from the Braidwood Local Land Services Office as our guides and information dispensers – and also many thanks to Marlene, a wonderful driver – who patiently waited for the stragglers.

As most in Windellama would know, soil and water are two major issues in undertaking land related activities in the Windellama area - be it gardening, growing trees or pastures. Windellama Landcare is in the process of reconditioning a machine that measures and maps shallow groundwater down to 6 metres in areas from small to large. Once the reconditioning and field testing is complete we propose to make this equipment and an operator available to interested landholders/managers.

Later in the year we will have some working bees on local properties or on public areas, you might wish to come to one of our busy bees too.

JOINING LANDCARE If you would like to participate in future Landcare activities - busy bees, talks, inspections, farm/tree walks and if you are interested in joining the local Windellama Landcare Group please call

Tony or Sandra Greville on 0418 412 460 or

Irene Turner on 02 4844 5214 or

John Pearce on 0435 586 281

Annual membership of Windellama Landcare is \$10.00 per family. Busy bees begin at 9:30 am with a cuppa. Morning tea and lunch are provided. Children are very welcome too at our working bees AND BUS TRIPS! You will learn about tackling some of the land management issues of our sensitive soils. It is also a great social activity – meeting local people while learning about our unique local area.

Countrywide Shower Screens



Shower Screens

• Frameless • Semi-framed • Framed

Mirrors

• Bevelled • Polished

Mick Greenwood
0448 494 220

Fax: (02) 4849 4220

E: countrywideshowerscreens@bigpond.com

Free Measure and Quote

Lowline Cattle

A small beefy, Angus derived breed – quite & easy to handle.

Why Lowlines?

MORE BEEF TO THE HECTARE

- ✓ smaller size means easier handling ✓ higher stocking rates
- ✓ low birth-weights ✓ early maturity ✓ compact bodies
- ✓ excellent feed efficiency ✓ less stress on fencing ✓ less soil compaction



Great for first time cattle owners of any age and gender

Windellama Downs

*Producing quality, Australian breed cattle & sheep
suitable for any size rural holding*

Stock for sale

Commercial or registered stud stock

Mob: 0416 047 488 Ph: 4844 5175

Email: windellamadowns@iinet.net.au

RURAL DOMESTIC COMMERCIAL
NSW LIC 174303C ABN 32740115200



RON WENBAN ENTERPRISES

ELECTRICAL SERVICES

0428 445 259

Industrial • Commercial • Rural • Domestic
Ph 4844 7088 INSTALLATIONS 0418 234 289

ALLARD

ELECTRICAL CONTRACTING SERVICES

SOLAR UTILITIES & ENERGY SERVICES

GAS-OIL COMBUSTION SERVICES

stevenallard@bigpond.com

ELECTRICAL LICENCES:

NSW Lic.No 198855C

NSW Lic.No 498875S

ACT Lic.No 2009576

QLD Lic.No C13290

ACCREDITATIONS

ACT Type (B) Gas Appliance #200732

NSW O.H.&S. General Induction #03655



Southern Districts Piano Service

Pianos • Pianolas • Tuning • Repairs
Re-polishing • Removals

Graham Price

FREE CALL 0427445329

Windellama SES First Aid & CFR

Forgive me, but I intend to stray a little from the norm.

We are fortunate in Windellama, in as much, that we have such an active group of people in many organisations.

Those are of course the SES, CFR , RFS, Landcare, Little Athletics, Windellama School, Peanuts Funny Farm, the Historical Society, Cancer Council CAN ASSIST, Markets and the Progress Association, Windellama Garden Club Inc. and Willow Glen Garden Group.

Then there is the Men's Shed at Tarago, this would encompass a wide gathering from all surrounding areas.

Six of our SES members were part of a group who travelled courtesy of the Local Landcare.

We visited a local property where we were shown the very interesting pattern of water retention methods.

The second visit was to the Tarago Truffle Farm, very interesting indeed.

Then we visited the Tarago Worm Farm and may I say, this was a real eye opener.

We are very fortunate to have such happenings in our area.

Please consider joining one of these organisations, we all need help, it is after all, in your interest.

The SES unit played host to fellow members from the Crookwell SES who went through a revision of a safe driving course. This gives a guidance when driving vehicles to different activities, urgent and not so urgent. PARTICULARLY FLOODED STREAMS.

You can see by this that the SES does branch into a broad range of topics. You too could participate if you came and joined our Team. Just come and have a look.

We have unfortunately had some long driving distance callouts lately,CFR.

Please may I remind you once again to help the SES and RFS in the time of storms(Ha! Ha!) and Fires by ensuring that you clean your roof, valleys and guttering of all litter, may save your house, so play it safe.

Kevin Muffet

Deputy Unit Controller Windellama SES/CFR

Rainfall Stats



16 August to 15 September

Rosewood, Windellama Road Windellama 19.5ml / 5 days

Gar-Den, Oallen Ford Rd, Oallen 29.5ml / 8 days

Corang Cottage, Braidwood Road
Nerriga 27.15ml / 7 days

Craft @ Windellama Hall

We meet from the second Tuesday of the month 1—4 pm.

For more information please call Irene Turner on 48445 214.

Rusty Balls

- . Natural bush soaps
- . Pet shampoo
- . Anti-bug balls - natural insect repellent
- . Blind Baking Balls
- . Hand made ceramics

Gary & Denise Johnson

4844 5087

sales@rustyballs.com

www.rustyballs.com

Heard of Wiltipoll Sheep?

The Wiltipoll is a hardy, prime lamb, wool shedding breed developed in Australia



- ✓ Full wool shedding – no costs of shearing
- ✓ Fly lice & grass seed resistant
- ✓ No jetting dipping or mulesing
- ✓ Stays in allocated paddock
- ✓ Superior quality meat sheep
- ✓ Ideal for organic lamb production - consistent multiple births

Windellama Downs



Stock for Sale

Commercial or Registered Stud Stock

Mob: 0416 047 488 Ph: 4844 5175

Email: windellamadowns@inet.net.au

A1

SEPTIC TANK & GREASE TRAP CLEANING SERVICES



0408 483 943

Bob Baird Goulburn

PH: 4822 3290

7 DAYS—SERVICING ALL AREAS

BUSINESS REQUISITES

Sales & Service

- Photo Copiers
- Fax Machine
- Cash Registers
- Computers
- Stationery
- Consumables

Ph: **4821 5109**

E: bus_req@ozemail.com.au

10 Russell Lane, Goulburn

Nerriga Progress & Sporting Association



Thanks to a generous grant from the Veolia Mulwaree Trust, Nerriga Progress & Sporting Association has been able to install footpaths around the Nerriga Hall. This creates an easy access through the front door to the Hall, and around the side to the toilets at the back of the Hall, particularly for anyone who is physically challenged. When the weather has improved, we will complete the grounds around the paths but some rain will help!

This is our second grant from Veolia, so we are well served by their generosity.

These paths were nicely "christened" when we held our Cake Stall and Sausage Sizzle on the Saturday of the long weekend.



NERRIGA HALL fees for Hire of Hall and Supper Room

Hall -

Full Day \$200

Half Day \$100

Supper Room - \$60

Supper Room &
Kitchen \$100

* GST to be added to all fees

Security/Cleaning Fee \$100

Refundable on inspection

To book please contact

Helen Rolland 02 4845 9115

helenrolland@bigpond.com



Nirvalley Homestead NURSERY



629 Cullulla Rd, Tarago

PH **4849 4481**



E. nirvalley@optusnet.com.au

M 0419 257 663



All suitable for local conditions

- Big range of natives and shrubs
- Conifers, Hedging, Windbreak
 - Paddock & Feature trees
- Advanced Trees • Tube stock
 - Fruit Trees, Nuts & Berries

See our FACEBOOK page for
lots of pics and specials

**MAGNOLIAS - LILACS
RHODODENDRONS
CRAB APPLES
FLOWERING CHERRIES**

All about to bloom

FRUIT TREES and
ORNAMENTALS still avail.

Windbreak & Shelter Trees
Leylandiis, Photinias & more

Talk to us about **LANDSCAPING**
Garden Design & Maintenance
and **IRRIGATION SYSTEMS**



TARAGO PRE-SCHOOL

Ph. 4849 4427

tarago.preschool@gmail.com



Open 5 days a week

Monday - Friday

Children 18 months - 6 years

Standard Rate - \$25/day

Casual and Half days available

Subsidised rates on application



Along with an Early Childhood Teacher our
staff are Diploma & Cert III qualified



Windellama Movie Night on the oval at Windellama Hall

Saturday 24th November

The Croods

**Movie starts around 8.00pm or
when it gets dark**



**Free Pop
Corn, Fairy
Floss and
Mocktails**

**BYO blankets,
chairs, cushions.**

**In the event of
rain, the movie
will be held in
the hall**



Rotary Swap Meet – Show and Shine at Crookwell Showground, Sunday 21 October 2018



A large variety of new & old goods on offer including collectables, clothing, footwear & normal swap meet items. This year it is anticipated that there will be a large number of participants featuring in

the show and shine early feedback & enquiries have been strong. The swap meet is again the destination for the 2018 Canberra-Crookwell Charity Cruised organized by the Canberra GT Falcon Club at info@falcongclubact.com.au)

Outdoor & indoor sites are available starting from \$15 per site & a \$50 lucky stall draw will again be available to participants. Set up from 12noon Saturday, gates open 6.30am Sunday. Free camping on the ground Saturday night with coin operated hot showers available.



Entrance fee for lookers and buyers is \$5 for adults and U12s free. Have an enjoyable day out at very little cost & be eligible for some of the \$400 in prizes offered to patrons for attendance.

Bookings & information:

Tele: Sean 02 4832 1566 or sandbproudman@bigpond.com

Email: secretary@crookwellrotary.com.au

ALL PROFITS TO LOCAL COMMUNITY PROJECT & ROTARY CHARITIES



Thinking of selling your property?

Contact Graeme Welsh Real Estate to find out what your property is worth in
todays market



4822 5737



www.welshre.com.au



welshre@bigpond.com

Supporting the Windellama Community since 1997



This is a beautiful time in the garden, with all the blossoms on flowering trees and shrubs.

VEGETABLES;

Sow seeds of carrots, parsnips, beetroot, peas, cabbage, silver beet, radish.

Also cucumber, marrow zucchini, rockmelons, watermelons, pumpkins, squash, capsicums, sweet corn, herbs such as parsley. Tomatoes, make sure you cover them with shade cloth if frost is still about. Beans and celery.

FLOWERS;

Seedlings that are available for summer and autumn display are;-

Ageratum, alyssum(sweet Alice) asters, balsam, carnation, cosmos, dianthus, gypsophila, larkspur, linaria, lobelia, Livingstone daisy, marigolds, nasturtium, pansy, petunias, phlox, portulaca, snapdragon, verbenas.

Dahlias seedlings can be planted now, these are a dwarf form with colours of yellow, reds, and pinks. They are ideal for cut flowers they grow to a height of 60cm. The seedlings will form a tuber which can be replanted next year.

The taller dahlia such as Decorative, Cactus, Water Lily can be purchased as tubers these grow from 1.5-2 metres which will require staking. They come in a good



colour range. All dahlias thrive in moist soils providing a lot of compost is dug into it. As the plants start to grow, a side dressing of complete fertilizer, also a water soluble fertilizer used over the foliage every month will ensure plenty of blooms.

Bulbs; When spring flowering bulbs such as hyacinths, daffodils, jonquils, ranunculus and anemones finish flowering feed them with a complete fertilizer, this assists the bulbs for next year's flowers.

Remove frost-damaged plant sections as soon as you're sure frosts are finished.

Finish pruning all your winter-flowering shrubs. Divide and plant out perennials.

Feed all those shrubs that are getting ready to flower through the summer months.

Fertilize lawns as they pump out new growth, water in well.

Top up the potting mix in established containers.

Set up sticky yellow traps to catch the tiny sap-sucking thrips that can spoil light-coloured blossoms.

Lightly prune diosmas and Geraldton wax when they have finished flowering.



THINKING FIREWOOD? THINK GOULBURN **Sand & Soil** WE'VE GOT WOOD TO BURN

DECORATIVE GRAVEL · GARDEN SOIL · PAVERS &
BLOCKS · SAND · GARDEN MULCHES · COMPOST
ROAD BASE · GRANITES · RETAINING WALLS
CONCRETE PRODUCTS · PIPES · GREEN WASTE
AGGREGATES · HI-TECH CONCRETE PRODUCTS



(02) 4821 8244



282 Carrick Road,
Goulburn NSW 2580



info@divalls.com
www.divalls.com.au



LORRY OVERTURNS

Occupants' Lucky Escape

One man was injured and two others had remarkable escapes when a motor lorry capsized on the Windellama Road, 19 miles from Goulburn, yesterday afternoon.

Stephen Snow (71), a prospector, residing at Verner Street, Goulburn, who was pinned beneath the lorry, sustained a severe laceration to the head, injuries to the back and right arm and severe shock. He was later admitted to the Goulburn District Hospital for treatment. He is the father of Mr. Lock Snow, well-known tailor, of this city.

Peter McCabe, prospector, residing at Rhoda Street, West Goulburn, was also pinned down by the overturned lorry, but escaped with shock. The driver, Mr. Goodchild, of 25 Opal St. Goulburn was thrown clear and was not injured.

OVER EMBANKMENT

It appears that the lorry, which is engaged on the Goulburn-Windellama-Oallen Ford mail service, was travelling into Goulburn when something went amiss, which caused the vehicle to run backwards on an incline. Out of control, the lorry plunged over an embankment and overturned.

A Mr. Nash, who passed by in his car shortly afterwards brought the three men into Goulburn.

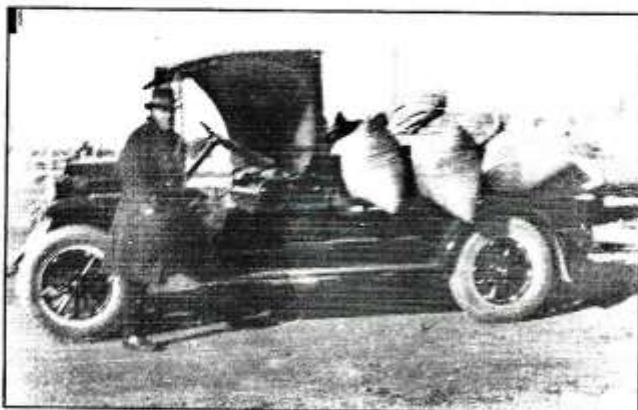
Snow's condition to-day was favourable.

Goulburn Evening Penny Post (NSW Monday 23 December 1929, page 2)



Lyle Goodchild and his T Ford truck

This would be the truck mentioned in the article above. Soon after this incident Mr Goodchild purchased the Chevrolet truck pictured below.



Lyle with his later mail truck, a Chevrolet



MICK'S MULTI TRADES

ABN: 90 178 544 738

Multi Skilled Tradesman

Windellama NSW

Lic # MVTC 126573

Mob: 0413 059 587

Email: micksmultitrades@gmail.com

Proudly supporting the Windellama community is Mick

A multi skilled tradesman and handy man.

So if you've got a problem, we can help you sort it out.

We can help you with building a shed too renovating your home,

Fitting a water tank or swinging a farm gate.

We looked after our locals, and turn a hand to any job.

So shoot me an email or phone anytime, you'll be pleasantly surprised at our down to earth rates.



CJ Solar

"Quality Systems that last"



Home, Business or Community Organisations

Custom Designed To Meet Your Energy Needs

- ◆ Stand Alone Systems
- ◆ OnGrid With Battery Backup
- ◆ Grid Connect
- ◆ Clean Energy Council Accredited

Ph: 4849 4225

www.cjsolar.com.au

PREVIOUSLY TRADING AS SUN POWER

LICENSED ELECTRICAL CONTRACTORS (241654C)

Cake Auction Saturday 11th August

After all the finances gained at this great event were added up, our club will be able to donate to the Goulburn Can-Assist a cheque for \$3,898.25 cents.

September Rainfall History

The last 5 years at our place in September have seen rain falls of 34.5mm in 2014, 18.25mm in 2015, 97.25mm in 2016, 19.5 in 2017 and this year so far Tuesday 18th - 12.5mm. This history indicates that we are possibly not in for much rain this month. Lets all hope that we receive a similar drop to the 97.25mm in 2016.

Water Storage

With the big dry we are suffering from and the outlook for rain not promising, plus hot weather we are already receiving, water storage as always, will be vitally important. The water storage for house hold usage might have been sufficient in by gone years but the future will be a different proposition. If previously, you have had to buy water, or you by luck have just managed, I think in the future purchasing water will be the norm.

The solution to your future water supply is either new tank/s or sinking a bore. If purchasing a new tank/s make sure all house, shed outbuildings have clean guttering and downpipes and are connected to the new tank. Might also be an idea to check the existing guttering for holes, cracked joints and overall condition. Whilst checking condition of guttering a good clean will probably be required. No use having a new tank or existing tank if the guttering, down pipes and drainage are faulty.

My old Grandfather used to say that a big frost or dew gave a days water, but then, I think they had only one bath a week for the whole family – cleanest first, dirtiest last and a basin wash other days.

Those lucky enough to have a flushing toilet the well versed saying was “If it's yellow – let it mellow, and if it's brown, flush it down”. I know at our place when we were young the Lemon tree and Passion Fruit vine was well watered at night by my brothers and I.

Also, if you haven't used your pumps since winter, try them out before it gets hotter, as water will be required in case of fire, so be prepared.

Fruit Trees

At our place I have given all the fruit trees and vines a good drink and have nearly finished mulching all the trees and vines with wood chip obtained out the front of our place.

There is a lot of positives in using woodchip, especially when free, and of course negatives such as it harbours the lava of Fruit Fly, Codlin Moth and Cherry Slug to name a few. My aim this year is to keep the trees alive with minimal watering. For the pests I will spray and bait.

Already the traps have caught Fruit Fly, Codlin Moth and other insects. So it looks like its going to be another challenging year to obtain some fruit without added protein in the form of maggots.

When we water the fruit trees at our place each tree or vine has a dropper that supplies water under the mulch by a short length of pipe and not on top of the ground or mulch where in hot weather it evaporates so quickly.

Garden Vegetables

All we will be growing this year are some salad vegetables and the rest of the garden will be covered with mulch and rested. Suprisingly, the onions are doing well, eventhough they have only received water from the heavens.

Our next club meeting will be on Thursday the 20th September. Details on 48447061.

Harry Simm

Secretary Windellama Garden Club Inc.

KARL KRISTIANSEN
0414 33 99 24

FIREWOOD • HANDYMAN
LAWN MOWING • CLEANING

ABN. 32 727 293 628

Booyong Alpacas

2217 Windellama Rd.

Quialigo. NSW. 2580.

Tel. 02 4844 7267.

Mob. 0417 658730.

Web. www.booyong.com.au

Like us on Facebook

www.facebook.com/booyongalpacashop

Email: booyongalpacas@optusnet.com.au



Breeding Coloured Huacaya Alpacas

since 1997 with a current herd of 175 Alpacas

Alpaca Sales & Stud Services

On Farm Alpaca Shop

selling 100% Booyong Alpaca Products
& Selected Imported Alpaca Garments.

Call us for advice or to visit the farm & view
our Alpacas & Shop.

Buying or selling house or land?

JOHNSON & SENDALL

Incorporating Mullens & Stephen J Lamond

SOLICITORS – CONVEYANCERS

For advice on all your legal requirements

Morris Owen ~ Alison Howarth ~ Tim McGrath ~ Carl Henwood

p: 02 4821 1588 f: 02 4821 9850 e: info@johnsonandsendall.com.au

www.johnsonandsendall.com.au

13 Montague Street Goulburn 2580



PERMITS REQUIRED

BUSH FIRE DANGER PERIOD
1 SEPTEMBER - 31 MARCH

Windellama Volunteer Rural Fire Brigade

Brigade Enquiries 4844 5359 ;Yass 6226 3100

RFS Website www.rfs.nsw.gov.au or
Windellama Brigade
www.windellamarfs.com.au

Captain – Paul Alessi 4844 5149
Snr. Deputy – Brett Vilnis 0416 222 747



PERMITS REQUIRED

BUSH FIRE DANGER PERIOD
1 SEPTEMBER - 31 MARCH

Get Ready Day

The Windellama Rural Fire Brigade will be hosting their annual Get Ready Day at the Windellama Small Farms Field Day on November 3rd at the Windellama Hall.

The brigade will be present with a plethora of information about preparing your bushfire survival plan and home for the current fire season. We will also have a variety of our appliances present and open for you to see our equipment.

Total Fire Ban Days

A total fire ban means **no fires out in the open**. A total fire ban helps limit the potential of fires developing.

During a Total Fire Ban you **cannot** light, maintain or use a fire in the open, or to carry out any activity in the open that causes, or is likely to cause, a fire.

Bush fires are more likely to spread and cause damage on days when the weather is very hot, dry and windy. These are usually on very high to extreme fire days.

To reduce the risk of fires damaging or destroying life, property and the environment the NSW RFS Commissioner may declare a Total Fire Ban.

Permits are suspended on days of total fire ban

Permits may resume after the total fire ban is lifted, as long as the permit hasn't expired.

If you would like to take part in the Windellama Brigade Training or be contacted by e-mail regarding the monthly training details, visit the Brigade's website and send an on-line contact form. For information on training dates, times and scenarios, check the Brigade website or contact Training Officers Officers Brendan Shannon 0401 712 015 (Brendan.shannon.deputy@windellamarfs.com.au) or Graham Kinder 0429 892 154, or follow the brigade on Facebook at Windellama Rural Fire Brigade. See you at the next Training and General Meeting. All welcome.

IMPORTANT NOTICES

Next Training; Sat 27 October at 13.00 (1.00 p.m.)

Next General Meeting; Sat 27 October at 16.00 (4.00 p.m.) **Please Note the Meeting Time**



GET THE JOB DONE RIGHT!

JCF Contractors have the manpower, equipment and experience to complete your custom project to budget, to spec and on time.

JCF CAN ASSIST WITH: Road Works • Shed Sites • Driveways • Site Works • Septics
• Arenas • Trenching • Demolition • Landscaping • Rural Fencing • Earthmoving
• House Excavation • Temporary Fencing • Rubbish Removal • Footing & Piers

JCF EQUIPMENT: Trucks • Dozers • Rollers • Graders • Bobcats • Tipper
• Watercarts • Excavators • Gravel Supply

0428 624 966

Call Jon for a free assessment of your property
Servicing Goulburn & surrounding areas.



MANPOWER, EQUIPMENT & EXPERIENCE



NSW Wildlife Information,
Rescue & Education Service Inc.

SOUTHERN TABLELANDS BRANCH

SACRED KINGFISHER'S LITTLE ADVENTURE

By Kay Muddiman – Media Officer

One morning some time back, a male Sacred Kingfisher flew into our glass sliding doors just as it was getting light. It knocked itself out for a couple of minutes, but then to our relief revived a bit, but was obviously very groggy. Nothing appeared broken so we put it in a covered carry cage in a quiet spot with fingers crossed it would recover OK.

Thankfully it did, and an hour later we were able to release it. Once the lid was opened it flew out far too quickly for me to get a pic, but fortunately



landed on our TV Antenna for a couple of minutes so I was able to get a couple of quick shots. He shook himself a couple of times, no doubt to settle himself down, then flew away strongly into the trees in our front garden. Such beautiful birds - so glad it survived.

The Sacred Kingfisher 'getting his bearings' on our TV antenna before flying away

After that we had a pair of Sacred Kingfishers around for some time. They used to swoop over and dive into our dam for yabbies – what a wonderful sight, not often seen! We like to think that 'our' bird was one of them!

Birds flying into windows is unfortunately quite a common occurrence, and sadly this can result in instant death. However, often they are just stunned and may recover in a short time and be able to fly away.

If you get a 'bird strike' that results in a stunned or semi-conscious bird, pick the bird up and place it in a covered box (preferably not too much larger than the bird) and put the box in a quiet room away from any other animals, children and noise. Then leave it alone for a couple of hours, by which time it will hopefully have recovered and be able to be released. During this time do *not* keep checking the bird as this will only add to its stress – just leave it completely alone to settle and recover.

(Continued on page 23)

JONATHAN'S APPLE

APPLE CONSULTANT

iPhone repairs



23 Beppo st.
Goulburn NSW 2580
0417220881
hijack@me.com



Goulburn & Southern Tablelands Newest Winery

Cellar Door Upcoming Open Days

Hours – 11am to 4:00 pm

Sunday 7th October

Sunday 14th October

Sunday 21st October

~check website for any changes or

call prior for a drop in visit or purchase anytime ~

25 kms down Windellama Road from Goulburn
turn left into Muffets Road

email: admin@yarralawsprings.com.au

web: www.yarralawsprings.com.au



WINDELLAMA PLAYGROUP

at

Windellama Public School

Each Thursday

9.30am – 11.30am



BYO snacks - tea & coffee supplied

Qualified art teacher visiting each fortnight

Bring your bubs & toddlers for a fun morning

Music, stories, sand-play, free-play, art, craft.

FREE!

We met at Lloyd and Irene Turner's place and weather was overcast and cool. We all welcomed the showers and were hoping for more.

Irene showed us around the garden while the weather was clear, but it wasn't for long and some of us stayed in the showers looking at the helabors she had. Very nice pinks and darker rose colours; a very nice show. Irene and Lloyd had been busy with their gardens and had plants in pots; a good display. Their vegetable garden in raised beds have some nice broad beans, brocoli, lettuce and peas growing.

It was Irene's birthday and she had made a lovely cake; gluten and lactose free, so she could eat it too. She blew out the candle and we all sang happy birthday.

We discussed our gardens and there was a theme of – 'needing more rain and weeds running rampant'. We are all waiting for the end of frosts to plant more seedlings.

We had a lovely morning tea and discussed visiting the Tulip Farm on Tuesday 25th September as a group.

Our next meeting on Tuesday 2nd October will be at Peter and Marie Styles' place in Lake Bathurst.

(Continued from page 21)

If after two or three hours there is no change in the bird's condition, then it's likely it has concussion and/or internal injuries and will need to be vet checked and brought into care. In this instance it's of great help to our volunteers if you could take the bird directly to a vet. Once the bird has been assessed by the vet, if appropriate he/she will contact us and we will take it into care.

Should you need advice or help with injured or distressed wildlife, please ring the WIRES Rescue Number 1300 094737. Your call will be logged and directed to the appropriate branch electronically when, as always, our volunteers will be only too happy to assist.

Until next time - take care all,

Kay

PERIPHERY

A weekend of workshops, discussions and networking, culminating in performances, Periphery will examine theatre as a tool for social change through the shared experiences of a broad range of community organisations, theatre practitioners and interested individuals.

19-21 October 2018

The Lieder Theatre

52 Goldsmith Street, Goulburn NSW 2580

We are welcoming all those who may wish to create, collaborate, discuss, engage, network or share.



Tickets

\$80 for the Weekend | \$60 Concession | \$50 Single Day
Includes master classes, panel discussions, workshops,
performances and some light refreshments.

www.liedertheatre.com



Registrations for the 2018/19 season are open and you can either register online at www.actlaa.org.au or at any of our Friday afternoon events. Our first event will be held on Friday 12th October 2018 at 6.00pm at the Windellama Hall grounds, cnr of Windellama and Oallen Ford Roads. Registration Fees for the 2018/19 season for our club have been set as \$105 for each child. We are still waiting for our application to Service NSW to be a service provider for the Active Kids voucher to be approved for use for the registration fees and will report our progress on this via our facebook page, Southern Tablelands Athletics Club.

Senior Athletes are welcome at our Club too. To register go to Athletes ACT website www.athleticsact.org.au/Participation/Membership and nominate Southern Tablelands Athletics Club as your local club. Events are held on Friday afternoon between 6.00pm – 7.00pm at either the Windellama Hall grounds on Oallen Ford Road, Windellama or the Tarago Recreation Area, Braidwood Road, Tarago with canteen facilities available at both venues.

Thanks to the Tarago Sporting Association for allowing us to have the Friday Night raffle at the Loaded Dog hotel at which we raised \$319 for our club. We have purchased our first set of equipment with the funds that we received from the Infigen Energy Capital Community Committee Fund Grant and will be applying for more grants for the remaining equipment that we need for the season ahead. Great news also that the grant application that Goulburn Mulwaree Council made on behalf of the villages has been successful and this means that the Windellama Progress Association's application for a new shed to house our equipment has been approved. Many thanks to all involved and we look forward to our new shed appearing in the near future.

If you would like to be a part of the Club or have any questions please contact our registrar (me) on 0419639254 or email gillshepherd315@gmail.com for more information. Come and join us for lots of fun and fitness.

Gill Shepherd

Registrar STAC

~~The Loaded Dog Hotel~~



Tarago EST 1848

Hoteliers: Nicole & Mark Ryan www.loadeddoghotel.com 02 4849 4499

1 Wallace Street TARAGO NSW 2580 | 02 4849 4499 | loadeddoghoteltarago@gmail.com

LIVE MUSIC @ THE DOG

October 21st

Neilly
Rich
@ 9pm

November 17th

Christie
Lamb
@ 9pm

Bingo @ The Dog
11am on 1st Wednesday
of each month.

Supporting
the Tarago
Mens Shed



Buy a Bale Big Breakfast
Sunday October 14th

8 - 10am

\$30pp

All money raised
donated to
Buy a Bale.



The Dog Bistro is open 7 days for lunch and dinner

Sunday to Wednesday 6pm - 8pm

Thursdays (Nicole's Fish'n'chips) 6pm - 8pm

Friday and Saturday 6pm - 8:30pm

Lunches 7 days 12noon - 2pm

Tarago & District Mens Shed News

Greetings to our members and the community



'Bushies go North': Our keen Bushies Group have headed off to Far North Queensland for five weeks. Robert Howarth, Ken Vassel, Lou Alaimo and Lou's brother have forsaken the cold down south and headed for the top of the Gulf. When they get back **we will** have to get them to go somewhere local so the other keen bushies amongst us can join them. Another bushie, our President Keith Hunter, has really gone bush - he's currently in the games reserves in Africa.

Spring Get Together and Veolia Site Tour & Lunch at the Shed (Spouses Invited). Now planning to have this event in late October - waiting for everyone to return home now its warming up. The trip we had to Heron Resources earlier this year was a similar event and everyone enjoyed themselves and learnt more about the industry endeavours in our region. Will keep you advised.

New Shed Progress. We are currently progressing a construction certificate application through the Goulburn Council. The anticipation is that the certificate will be granted before the end of September. Once granted we can start construction.

New Shed Opening. The current plan is to have the official opening in FEB19. The Patron of the Men's Shed Association, the Governor General Sir Peter Cosgrove has accepted our invitation to open the Shed. The Australian Men's Rugby Choir will also join us. Should be a special day.

Grant Applications & New Recreation Room. We have submitted grant applications to the Department of Veteran's Affairs and the NSW Government. The grants are requesting funds water tanks and recreation room fittings for the new Shed, including a wood fire heater. We should hear the result by Dec.

Shed Projects. There are two major works in progress: (1) work benches for our new Shed - Keith Hunter and Robert Shaw are building several impressive new benches, (2) Ken Vassel and his apprentice Terry are erecting a band stage to be used at during the Tarago Show - the stumps and deck frame are in place.

Next Committee Meeting. Scheduled for 7.00pm at the Loaded Dog on Monday 1st October 2019. All members invited to join the Committee.

Lou Alaimo

Secretary for the Committee

0428 328 686

taragodistrictmensshed@gmail.com

WINDELLAMA HALL COUNTRY MARKETS

Sunday 21st October

9am to 1pm



Homemade Jams & Preserves

Pre loved toys, books & tools

Locally produced honey

Lots for the sewing enthusiast

Hand made baby treasures

Locally grown plants

Rawleigh Healthcare

Scented candles

Hand made knitted goods

Alpaca clothing

Food and refreshments

Enquiries

Lloyd Turner 4844 5214

Plenty of parking

Museum open





Hello Everyone,

We finally have wheel chair access right into the museum, very special thanks to Gary Stafford from Hi-Quality Group for making this possible, we appreciate your help very much Thank you

Our Windellama Museum volunteers will again be cooking up a tasty sausage at Bunnings 21st October so call in, we appreciate your support.



We have some old favorite publications reprinted as well as the Birthday publication available at the museum so lots to choose from.

Call in to the Museum on the next market day to purchase your copy as well as having a look around our wonderful Museum.

Windellama History is preserved in our wonderful museum, with lots to look at and lots to talk about, so come and visit at the next Market Day.

We have a selection of history books by local Authors Tom Bryant & Rex Hockey, for sale as well as the ever popular "Wild Windellama" by Carina Clarke.

The museum is open on Market Days - every third Sunday of each month, from 9am till 1pm also by arrangement.

Next Meeting 6th Oct 2018 10am at the Museum

NEW MEMBERS and GUESTS ARE ALWAYS WELCOME

For any enquiries please contact:

Rex Hockey: 48 445147

Marcia Tatam: 0423283514

Julian Woods: 48 44 5270

WINDELLAMA SMALL FARMS FIELD DAY

25 YEARS AND STILL GOING STRONG!

SATURDAY 3RD NOVEMBER 2018 | 9am - 4 pm

WINDELLAMA HALL, CNR. OALLEN FORD & WINDELLAMA ROADS, WINDELLAMA



DON'T MISS THIS EVENT!

COMMERCIAL EXHIBITS
INFORMATIVE DEMONSTRATIONS
FRIENDLY EXPERTS READY TO ANSWER YOUR QUESTIONS
HANDMADE CRAFTS
LOCAL PRODUCE
CHRISTMAS GIFTS

MARKET BARGAINS
ANIMAL NURSERY
CHILDREN'S ACTIVITIES
PONY POO COMPETITION
LIVE MUSIC
EDUCATIONAL WILDLIFE SHOW
ROCK CLIMBING WALL

www.windellama.com.au



Vcolia Mulwaree Trust



Classified Advertisements

All personal classifieds are FREE & also included in the Tarago Times
We run your advert until you let us know when you have sold it or gained it

GENERAL FOR SALE

Gas stove with oven, 6 burner, commercial type, about 800mm wide. 1 burner disabled, suit weekender. \$50 Andrew 0419588148

Vinidex 13 x 50mm x 4.0 m orange electrical conduit \$12.00 per length or \$145.00 the lot. Ph Bob 48445001 after 6.00pm .

Simpson Top Load washing machine 5.5 kg \$200 0427 244 550

Folding single bed with mattress . Offers above \$10.00 48445001

Wooden T.V. Console in VGC. Size W=186cm, H=147cm, D=59cm. Contains a glass cabinet each side, 2 drawers, DVD & T.V. Area. \$250.00 or O.N.A. Details 48447061.

High grade quality woollen yarn rugs cream and deep red both matching in great condition small 150 x 239 large rug 250 x 350. \$400 ono. Call Elisha 0403542471

Teak entertainment unit, with two glass door display. 6x4 foot. \$75.00 ONO.

Double bunks, Metal, with ladder, new innerspring mattresses. \$125 ONO

Two wooden bed side tables with cane draws.\$50 for two. Ph. 4849 4480

1 x **King Single bed** \$200; 1 x **Single bed** \$150; 1 x **Single bed** \$100; **Dressing table/ chest of drawers** (8) \$150; 1 x **Glass TV table** \$150; 1 x **Glass coffee table** \$50 Ph 0411 421 416

Lounges - 1x3, 1x2 + ottoman - yellow fabric, Matching chair in navy blue. All GC. Offers over \$500 considered. 4849 4222

Desk - large timber , 2xdraws/storage under. Leather inlay + matching 2drawers file cab. Ergo office chair. All VGC. \$400 ONO 4849 4222

Firewood. \$150 per load. Ph 4849 4520 for delivery

Firewood. 2 tonne truck load \$430, ½ truck load \$250. Ph 0401 241 646

ANIMAL RELATED FOR SALE

Orders taken now for supply of **nucleus bee hives** for spring /summer 2018 4844 5001

2 horse straight load float in good

condition. An oldie but a goodie. Strong rubber lined and able to carry 2 large horses. New tyres and wheel bearing all round and brakes etc checked and working. Rego until 24th Nov 2018. Kept undercover. \$4,000 Kay Hamer kahamer@activ8.net.au or 0248459021 but it goes almost straight through to the answer phone to allow me to filter out the scam calls so leave a message or if by it I will pick up.

Collapsible wire crates 2 medium \$50ea 1large\$70. 2 wooden export crates fox terrier size \$40ea. 2 vinyl crates— as new \$100ea (cost \$250). Medium size whelping box (electric)\$150. Clean double blankets \$40ea. Call 4844 7143 ask for Margaret

Budgie breeding cages \$50 ono. 48459147

Parrot Cage on stand, good cond. \$150 ONO. Ph 0429 006 745

Saddles, good condition, \$350 & \$200. ONO. Riding helmets \$30 and \$20. Also other gear: bridles, leather straps, etc. Ph 0434 286311.

Miniature Shetland Gig well balanced, hardly used, some harness, pneumatic tyres, lightweight \$730 ono Ph 62301774 or 0417749064

ANIMALS FOR SALE

Adult ducks for sale. Peking x breed. In laying season at present. \$10 each. Ph 48459147 after 7pm or 0405499186

2 black plump good looking Australorp Roosters to give away.48447061

Boar Goats for sale Male and females \$120 each Contact Frank on 0418282931

Muscovy Ducklings & 4 Mothers 4844 5108

Murray Greys 2 Bulls—make an offer. 0414616960

Lowline Bull approx 18 months old \$2000 o.n.o 02 48459147

Part Arabian horse 4 years old , 13hh chestnut gelding. \$1,500 ph 0421996795

Alpacas - lots of different colours & ages. From \$250 each Phone Jacki 0428 298 157

Horse part Arabian, 3 yrs old, regd, 14.2 hh, chestnut mare. \$3,000 Ph 0429 461 490

Classified Advertisements cont

Alpaca Wethers Variety of Colours, ages 12 months – 3 years. Halter Trained Wethered, Needled & Shorn. \$400.00 each. Phone 4844 7267. Faye & Keith. Quialigo.

AGISTMENT

Horse Agistment available at 41 Burrabinga Road Tarago. Please phone 0429 461 490 for enquires

CARS, BIKES, TRAILERS, etc. FOR SALE

Nissan Pathfinder, very good condition, new tyres - excellent vehicle to drive and well maintained - V6, 250,000 Ks, Recent full airconditioner service - Compliance plate late 1999, \$6,000. Phone 48459147.

20 inch 7 spoke mag wheels in great condition near new tyres 95% tread on them. Ideal for Commodores. \$800 ONO call Richard on 0403542471

Camper Trailer Queen sized bed with large room. Plenty storage room. Comes with zipon canopy/shelter. Easy to erect/store/transport. \$3500 ono Ph 62301774 or 0417749064

RURAL RELATED FOR SALE

Seed Spreader. As new \$1000 o.n.o. Post hole Driller. As new \$600 o.n.o Quad Bike for Sale - recent fully Serviced - \$2000 o.n.o. Tri Motor Bike with attached Trailer. great for using around stables . Not registered for road use. \$2000 o.n.o. Water pump for sale. Never been used. \$1000 ono. 48459147 after 7pm or 0405499186

Gallagher Lightning Diverter for electric fence energiser protection. New & unused - \$30

Free standing drill press single phase power and adjustable speed. Comes with vice \$300 ono call Richard 0403542471

Lucerne Hay Prime soft green small bales \$15 8 x 3 x 3 bakes of lucerne or beardless wheaten available phone 0428493194

Stanbury Electrical 75 amp battery charger - new condition, used twice only for Solar batteries - \$1200. Pho 48459147 after 6P.M.

Gallagher Lightning Diverter for electric fence energiser protection. New & unused - \$30 Ph: 4844 5843

Sherwood hydraulic log splitter 3 point linkage, horizontal and vertical operation. \$3,500 ONO Ring Grahame 0403499068

WANTED

Small Quad Bike for kids phone Garry 48445980

Australian Silky Terrier Female Pup (will pick up) phone Sharon 48445980 0438879355

Info on star picket straightening service. Call Margaret 0459142230 / 48445566

Knitting wool for volunteer knitters for charity. Any leftover wool, any ply, gratefully accepted. Ph Denise 4844 5087

Horse agistment for mini mare from November to May to avoid coastal itch. Please call Tanya 4456 5589

SERVICES

Belinda's pet minding

Why stress your pets out by putting them in Kennels or boarding and saving on having to get them vaccinated to put them in boarding.

I will come to you . Leaving your animals in their own homes. I have Vet Nurse experience of 10yrs .

I have a miniature pony stud and also breed and show guinea pigs. I will feed Horses , Dogs, Cats, Goats, Sheep, Chickens Ducks,. Medicate animals daily if needed .

Servicing Windellama , Bungonia, Quialigo and Goulburn.

Contact Belinda on 48447168 or 0490814131

CLEANING

Needing a house cleaner? I clean homes weekly, fortnightly or monthly. Will service Windellama, Quialago, Bungonia area. I am currently the school cleaner for Windellama Public School, which I have been cleaning for the past 6 years. Contact Belinda 4844 7168, or mobile 0490814131

LAND FOR SALE

35.5 acres bush block, 3 bedroom house, out buildings, Creek and dam, Oallen Ford Rd Windellama. Please call 0427 5560 69

CHURCH INFO

Catholic Church Services

Parish Priest: Fr. Dermot McDermott

Assistant: Fr. Assin

Deacon: Chris Van Gessel

Presbytery & Parish Office
Phone 4821 1022

Sunday Mass will be at 8am on the 2nd & 4th
Sunday at St. Patrick's **Marulan**.

Mass Times in **Goulburn** are:

Saturday Vigil Mass:

5pm at St. Peter & St. Paul's

Sunday: 7am. at Our Lady of Fatima,
Nth. Goulburn

Sunday: 10am. at St. Peter & St. Paul's

St. Joseph's Church, Tarago

Enquiries: 4821 1022

Fees for Hire of Hall or Supper Room at Windellama Hall

*HALL ALL DAY	\$200
DAY 4hrs or less	\$100
EVENING/NIGHT**	\$200

*Includes Supper Room & Kitchen

** \$2 per hour for heating

SUPPER ROOM (Includes Kitchen)

ALL DAY	\$80
DAY 4hrs or less	\$40
EVENING/ NIGHT	\$100

Use of the premises prior to your booked
function will incur a surcharge of
Supper Room Fee

**To Book please ring W. P. A. Secretary,
Leanne Lourigan on 4844 5545**



CHURCH SERVICES

St Bartholomew's Windellama

Services for October

10.30 am 14th October

10.30 am 28th October

Reverend Canon Peter Bertram

St. Andrews (Anglican) - Tarago

2nd Sunday 9am

St. John's - Lake Bathurst

4th Sunday 9am

NERRIGA

ANGLICAN CHURCH SERVICES

Held at Nerriga Church

2nd Sunday each month at 2pm

(Except Easter & Christmas)

All Welcome

FEES & CHARGES

Tipping Charges Residents Only.
Small trailer is 1800mm x 1200mm x up to 350mm height.
All Fees x 2.5 for Non-Residents.

	Fee Basis	Fee
Household Recycling (up to a small trailer)	Per Entry	\$4.00
General Waste: Small quantity (small car boot)	Per Entry	\$10.00
General Waste: Twin cab ute / small trailer (max height 350mm)	Per Entry	\$20.00
General Waste: Twin cab ute / small trailer (max height 450mm)	Per Entry	\$27.00
General Waste: 1 tonne flat top ute (max height 450mm)	Per Entry	\$35.00
General Waste	Per Cubic Metre	\$110.00
Garden Organics: Car/station wagon/dual cab ute/small trailer (max height of 450mm)	Per Entry	\$10.00
Car Bodies	Per Item	\$85.00
Fridge, Freezers, Air Conditioners	Per Item	\$20.00

Changes to Waste Management Centre Opening Hours

Changes to Waste Management Centre opening hours. From Monday 2 May 2016 Goulburn Mulwaree Council's Waste Centres will operate different hours.

Goulburn Waste Management Centre open 7 days per week from 8am to 4pm.

Marulan Waste Management Centre to be open from 8am to 4pm on Saturday and Sunday, plus 8am to 12noon on Friday and Monday.

Tarago Waste Management Centre to be open from 8am to 4pm on Saturday, Sunday and Monday.

All Waste Management Centres will be closed on public holidays and from 12 noon on Christmas Eve.

Marulan and Tarago Waste Management Centres will also be closed from 12noon to 12.30pm on opening days to enable the operator a dedicated lunch break.

COMMUNITY INFORMATION

Windellama Progress Association

Michael Still (President) 0413 059 587
Leanne Lourigan (Secretary) 4844 5545

Windellama Rural Fire Brigade

Paul Alessi (Captain) 4844 5149
Graham Kinder (President) 0429 892 154
Peter Pokorny (Secretary) 4844 5759

Windellama Field Day Committee

Co-ordinator Gary Lourigan 4844 5545
Secretary Leanne Lourigan 4844 5545

Windellama News

Ray Plant (Secretary/Treasurer) 4844 5156
Gayle Stanton (Editor) 4844 5156

Windellama Garden Cub Inc.

Harry Simm (President/Secretary) 4844 7061
Sharon King (Treasurer) 4844 5980

Windellama Hall Country Markets

Lloyd Turner 4844 5214

Windellama Historical Society

Rex Hockey (President) 4844 5147
Julian Woods (Secretary) 4844 5270

Windellama Landcare

Tony Greville (President) 0418412460
Sandra Greville (Secretary) 0418412460

Windellama CFR

Kevin Muffet 4844 7143

Windellama School P&C

Shelly Andrews (President) 4844 5630

Willow Glen Gardeners

Warren Yates 4844 5350

Wires (wildlife rescue)

Southern Tablelands WIRES 1300 094737

Justice of the Peace

Linda Shannon 0490041167
Geoff Burns 4849 4330
Leanne Lourigan 0427201469
Suzanne Robens 0490774981

Southern Tablelands Athletics Club (STAC)

Gill Shepherd 0419639254

Nerriga PSA

Helen Rolland (President) 4845 9115

FOR ALL EMERGENCIES eg. FIRES / ACCIDENTS PHONE 000

For Mobile users & Landlines



Important Phone Numbers

Rural Fire Brigades



Windellama	Paul Alessi	4844 5149
Tarago	Warren Seymour	0419 665 393
Taylors Creek	Dave Elward	4849 4240
Mt Fairy/Boro	Tony Hill	0412 128 755
Bungonia	Terry Lewis	0408 223 380
Gundary	Tony Kent	0437298200
Nerriga	John Rolfe	4845 9160

Bushfire Information 1800 NSW RFS
or 1800 679 737

www.windellamarfs.com.au or www.rfs.nsw.gov.au

WINDELLAMA PH: 4844 5359 or CHANNEL 21



AMBULANCE

000

Ambulance Booking 13 12 33
Goulburn Ambo Station 4827 0444

Windellama SES

132 500

Kevin Muffet 4844 7143
Poison Info. Service 13 11 26
Goulburn Base Hospital 4827 3111

Police

Tarago Station -
Snr. Constable Gary Handseker 4849 4411
Goulburn 4824 0799

Other

Goulburn Railway Station 4828 5816
Train info & bookings 13 22 32
www.countrylink.info
Country Energy - interruptions 13 20 80
Lifeline 13 11 14
Kids Helpline 1800 551 800

October 2018

Mon

Tue

Wed

Thu

Fri

Sat

Sun

1	2	3 Tarago & District Men's Shed 10 am-3 pm	4 Progress Meeting at Hall 4.00	5	6 Tarago & District Men's Shed 10 am-3 pm	7
8 SES Meeting @1830	9 Craft Afternoon at Windellama Hall Community Outreach Meeting Windellama Hall 6.30pm	10 Tarago & District Men's Shed 10 am-3 pm	11	12 Little Athletics Meeting	13 Tarago & District Men's Shed 10 am-3 pm	14 St Bart's Service 10.30 am
15 SES Meeting @1830	16 Craft Afternoon at Windellama Hall	17 Tarago & District Men's Shed 10 am-3 pm	18	19	20 Tarago & District Men's Shed 10 am-3 pm P & C Trivia Night	21 Windellama Markets 9.00am- 1.00pm
22	23 Craft Afternoon at Windellama Hall	24 Tarago & District Men's Shed 10 am-3 pm	25	26	27 Tarago & District Men's Shed 10 am-3 pm Fire Brigade Training & Meeting CFR Training 0830	28 St Bart's Service 10.30 am
29	30 Craft Afternoon at Windellama Hall	31 Tarago & District Men's Shed 10 am-3 pm				