



## WINDELLAMA PROGRESS ASSOCIATION HALL Inc.



### Report from the meeting conducted on Monday 21st August

Several committee members were unable to attend last Monday's meeting, however, Kellie Green and Terry Hannan from the P. & C. joined us. Several important matters were considered, the most important being the lack of interest in a function to celebrate the 80<sup>th</sup> anniversary of the opening of the community hall. A vote to cancel the October 7<sup>th</sup> date was carried.

The P. & C. is interested in holding a dance on Saturday 28<sup>th</sup> October with a Halloween theme, to involve the whole community. After discussion, a suggestion to use the occasion to celebrate the hall anniversary, the tenth anniversary of the Windellama News and All Hallows was moved and carried. The children will decorate the hall, the Progress Association will provide supper and the community is invited to join in the celebrations. Finer points will be in the next issue.

Following a suggestion from a member of the community, the committee voted to investigate the installation of a baby change table in the disabled toilet at the hall.

If there are any other suggestions out there, please contact a member of the committee. We don't bite and are quite amenable to new ideas.

The building inspector has passed the frame for the kitchen extension. The wall cladding has commenced and the electrical work is in hand.

A shade sail will be erected out from the back wall of the hall in time for the Field Day.

Frances Knights, Secretary.





# Raine & Horne Goulburn



**Active in Your Community**

**We are always looking for properties**

**FOR SALES AND BUYERS**

***No obligation appraisals***

**Ring Alan Gale (B.H.) 4821 9088**

**(A.H.) 4821 7512 or 0408 628 331**



## **Elvis Hejda**



**Cabinet Maker, Wood Turner**

Now trading as

**GOULBURN WOODWORKS**

**Specialising in Custom Built:**

**Kitchens & Laundry units**

**Built-in Wardrobes**

**Solid Timber furniture**

**Entertainment units, Vanities,**

**And all repairs & restorations**

**Also specialising in**

**Treated pine lattice - made to measure**

**Phone 4823 6044 Fax 4823 6055**

**113-115 Chantry Street, Goulburn**



### **SOUTHERN TABLELANDS BRANCH**

## **Meet Christopher**

He has been in care for 13 months, orphaned after his mother was caught in a fence.

Christopher was only 950 grams when rescued. He now weighs 10kg, and will be ready for release in about 6 months time. We like the joeys to be around 15kg before they go to live in the bushland.

If you hit a kangaroo or wombat in your vehicle, please stop.

If it is dead, it will need to be moved off the road to avoid further accidents. You can check if it is dead by nudging its back with your foot. If it *is* dead, drag it from the road by its tail or back leg. Also, please check if the animal has a pouch, and if so, if there is a joey in it.

If you are unable or not willing to check the animal, one of our WIRES members will be more than happy to do so. Just call us and tell us its location. WIRES members are available 24 hours a day, 7 days a week.

If you find a joey in a pouch, depending on its size, it may still be attached to the teat. To remove it, VERY gently press the joey's mouth to release it. If it will not release, you will need to cut the teat off as close as possible to the mother's body. If the teat is cut too short, the joey may suck it in and choke on it. Remember, the mother is dead and won't feel it.

Never remove the joey by the legs or tail, as this often results in dislocations and breaks.

The joey will need to be wrapped up and kept warm. Keep its head covered to reduce stress. If the joey is very cold, some form of warming may be needed until a WIRES member can come and pick it up. This can be done with a wheat pack or hot water bottle. But if you use a hot water bottle, just fill it with hot tap water, not boiling water. Joeys need very gentle heat.

If you check the pouch and it is empty, but stretched, the joey may be old enough to get out. Have a quiet look for it in the near vicinity. You may hear it calling out to its mother, or see it in the area. If the joey was still in the pouch before the mother was hit, that does not mean it will survive once it has gotten out.

Please don't feed the joey. Its main requirements are safety, warmth and quiet. Once you call WIRES, they will instruct you on care until they arrive.

If the animal you have hit is not dead, please call WIRES, and one of our members will gladly come out and attend to it.

Marian Hardy

**[www.windellama.com.au](http://www.windellama.com.au)**



## **POULTRY AUCTION**

### **SUNDAY 17TH SEPT**

### **Poultry Pavilion Goulburn Showground**

**Braidwood Rd Goulburn**

**PENNING CEASES 9.30 AM SHARP**

### **AUCTION STARTS 10 AM.**

**FOR INFORMATION**

**Phone BOB ANDREWS  
4844 7133**



# WHAT'S HOT FOR Winter

✓ NO DEPOSIT  
✓ NO INTEREST  
✓ NO REPAYMENTS  
for 13 months\*

'From stylish wood heaters....

## Norseman

### NORSEMAN RANGE FEATURES:

- Clean Burn system
- Quality steel firebox
- Designed & made in Australia
- In-built models available



## Clean Air

### CLEAN AIR RANGE FEATURES:

- Patented quad burn firebox air redirection system
- Exceptional clean burn technology
- Patented heat exchange tubes



## AustWood

### AUSTWOOD RANGE FEATURES:

- 3-speed fan standard on all models
- 6mm steel firebox
- Large glass viewing window
- In-built models available



## LOPI

### LOPI RANGE FEATURES:

- Manufactured in the USA
- Durable construction
- Practical cooktop surface
- Clean burning convection heaters



## NECTRE

### NECTRE RANGE FEATURES:

- Simple but elegant styling
- Manufacturers of the 'Bakers Oven'
- Models to heat from 15 to 40 squares
- Radiant & convected warmth



## EUREKA

### EUREKA RANGE FEATURES:

- Fire brick lined fire box
- Powerful 3 speed fan
- Large view glass window
- Large Range of freestanding & inbuilt models



to convenient gas fire options...

## EUREKA

### EUREKA TOPAZ GAS LOG FIRE FEATURES:

- Woodheater appeal with the convenience of gas
- Freestanding or fireplace insert model available
- Heats up to 120 square metres



## LOPI

### LOPI DIRECT VENT FIREPLACE FEATURES:

- Realistic flame at low cost
- Easy Zero Clearance Installation
- Choice of facias
- Natural Gas or LPG



## HEATMASTER

### HEATMASTER OPEN GAS LOG FIRE FEATURES:

- Decorative gas fire
- Install into existing fireplace
- Fully insulated models available for timber wall installation
- Natural Gas or LPG



Wood buckets, log holders, fire screens... we've got a huge range of fireside accessories!

we know heating inside out'

Now's the time to get set for winter...we've got Goulburn's largest range of wood and flued gas heaters along with all the replacement parts to keep you warm this winter!

# BARBEQUES GALORE

**NOW OPEN 6 DAYS**  
388 AUBURN STREET GOULBURN PH. 4821 4885

e: bbqsgoul@tpg.com.au

\* Conditions of 13 Month Interest Free Payment Deferred: Available to approved applicants or existing CreditLine or Buyer's Edge (excludes new applicants residing in ACT) cardholders on transactions over \$500 until Sunday 13th August 2006. Offer available on advertised or ticketed price. This notice is given under both the CreditLine and Buyer's Edge Conditions of Use (as applicable) which specify all other conditions of this offer. Interest and payments are payable after the interest free period. Establishment fee, account service fee (currently \$2.95 per month) and other fees and charges are payable. Credit provided by GE Finance Australasia Pty Ltd (ABN 88 000 015 485) trading as GE Money for CreditLine and GE Capital Finance Australia (ABN 42 008 583 588) for Buyer's Edge. Products may vary from those shown. Accessories and flue kits where pictured are not included unless stated otherwise. Offer only applicable to Barbeques Galore Goulburn store.

A Bungonia and District Historical Society Inc. History Week Event

**Saturday September 16, 2006**

**Bungonia**

**Bridge to Bridge -Village Heritage Tours**

Bungonia was settled from early in the 1820s, the transportation route and a supply line for early Sydney. Original site for Goulburn.

- **9AM** onwards register in the Hall.
- **Self tour Registration \$10.00 includes** maps & information.
- Country hospitality - Morning tea or afternoon tea included with entry.
- Historic Bungonia Village and Cemetery, both Churches and other significant buildings open.
- Historical materials displayed in the Hall; sales.
- Volunteer Rural Fire Brigade **BBQ lunch: purchase separately.**
- **1PM.Talk** – Bungonia Hotels in the Hall. Bad blood/turf wars; Publicans feuding.
- Archaeological site visit
- Local produce; Wine and olive tasting. Items for sale.
- Horse drawn carriage rides- TBA; if available -self purchase.
- Restored creek environment; War Memorial.
- Close **3PM**

**Venue:** Bungonia Village. 2 hours South from Sydney;  
After Marulan service centre  
Left off freeway at the Bungonia and South Marulan Turnoff.

**Disabled accessible:- Hall and Bungonia State Conservation Area.**

*Please contact Anne Williams 48444228 or Moira McGinity 4844 4266  
[annekw@ozemail.com.au](mailto:annekw@ozemail.com.au) for more information.*



**ATTENTION ARTISTS ALL MEDIA  
Enjoy BRIDGE TO BRIDGE BUNGONIA NOW  
AND**

**Prepare works for exhibition/performance next year**

Bungonia Hall has been the heart of our district for 99 years so far---  
Tentative Centenary Celebrations' date is History Week September 2007

Artists who would like to enjoy this opportunity might be interested to prepare some work ready for the Centenary of Bungonia Hall exhibition and Celebrations.



GOULBURN RURAL LANDS PROTECTION BOARD

**Saturday 23<sup>rd</sup> September 2006**

# ***“Enhancing your Rural Asset”***

To be held at and in association with:  
***Marulan Rural Supplies,***  
**Lot 4 Portland Avenue, Marulan,**  
**and supported by:**



**9.00 am Registration**

## **Session 1**

**9.30 am to 11.00 am** Evaluating your small farm: goal setting, planning, land capability, management of trees, pastures, soil and water.

## **Session 2**

**11:30 am to 1.00 pm** Your responsibilities as a landholder: protecting your own property, rural theft, building a good neighbour philosophy, control of weeds and pest animals, protection against bushfires and basic requirements for livestock.

## **Session 3**

**2.00 pm** Exploring some options: lavender, berries and tree products.

**3.30 pm Finish:**



Refreshments available all day.



*“Please take the opportunity during the day to explore the Mini Field Day; view a range of commercial displays & speak with exhibitors”*

For more information please contact:  
Goulburn Rural Lands Protection Board ~ ph 48 212522  
Marulan Farm Supplies ~ ph 48 411 340



WORKING FOR RURAL NSW  
**WORKING FOR RURAL NSW**



## At Your Library



**NRMA RoadZone** is one of Questacon's major Outreach Programmes. Questacon is the National Science & Technology Centre in Canberra.

Set around a fictional town called 'Hazard Point', this exhibition uses 20 engaging exhibits to highlight road hazards and risks for pedestrians, cyclists and passengers.

Learn more about the influence of peers in decision making and the effect alcohol has on your ability to drive. Gauge your level of road sense and knowledge of road rules. NRMA RoadZone has been specially designed for 9 - 14 year olds.

Where: **Goulburn Library**

When: From **1st to 20th September, 2006.**

Bookings: Bookings are essential for school groups. Book in the library or call 4823 4435.

**Cost: Free**

### 5th Australian Poetry Festival/National Poetry Week 1-10 September

As part of the festival an annual Poets on Wheels tour is organised to encourage the dissemination and appreciation of poetry throughout Australia. This year Goulburn Library will be taking part in the festival by hosting a public reading and workshops from the Poet's on Wheels tour.

Poets throughout the Southern Tablelands are invited to come along and listen to the Poets On Wheels readings and also read out their own poetry during the open mike section. Poetry can be written on any theme of interest to the writer. If you are looking for inspiration why not try the Australian Poetry Festival theme of Between! or you can select from the themes for National Poetry Week which are Wild Parties, House Arrest, Fruit, Freedom, Loud, Friendship, Open Books, so get writing.

### Poets on Wheels Readings

Readings by Poets on Wheels touring poets Sarah Attfield, Harry Laing, Bee Perusco. Includes open mike section with best local reader \$40 cash prize, winner certificates and highly commended for best local poem at the reading. With thanks to STARTS regional development office.

Poets on Wheels is funded by Arts NSW.

Contact: Elizabeth Brown 4823 4407

When: Wednesday **September 6 at 7.30 pm**

Where: **Goulburn Library**

Bookings: No booking required.

**Cost: Gold coin donation.**

### Poets on Wheels Workshop

Adult workshop with Miles Franklin Writers Group and STARTS Regional Development Office, by Poets on Wheels touring poets: Sarah Attfield, Harry Laing, Bee Perusco.

When: Thursday **September 7 from 12.30-3.30pm**

Where: **Goulburn Library**

Bookings: Are essential phone Rachel Moore on 4823 4436

**Cost: \$4.00**

### Lunch in the Library

#### life long learning @your Library

Do you have time on your hands? Want to meet new people or learn new skills? Do you enjoy sharing your knowledge and skill with other like-minded people? Perhaps we can help you!



Learning

The University of the Third Age -U3A- is an international movement that encourages retired people to take part in lifelong learning activities for pleasure. U3As allow people to study in a relaxed environment at a low cost. There are no prior qualifications needed, no exams and no degrees awarded.

They are learning co-operatives of older people, and by offering many education, creative and leisure activities to their members encourage positive aging.

Jan Wilson is the coordinator of the Yass U3A group and has 13 years of experience in organising and leading classes in her U3A group. Jan Wilson will explain how you

can benefit from setting up a U3A group here in Goulburn.

Tea, Coffee and biscuits will be provided and you are welcome to bring along your lunch.

Where: **Goulburn Library**

When: Friday 8th September 2006 from 12 noon to 1pm.

Bookings: No booking required.

**Cost: Free**

### Lunch in the Library

#### History Week 16-24 September 2006

To celebrate the NSW History Council's History week Senator Ursula Stephens will present a talk about Daniel Deniehy, prominent republican, writer, lawyer and politician in Australia in the 1800's and one time resident of Mandelston's of Goulburn.

Tea, Coffee and biscuits will be provided and you are welcome to bring along your lunch.

Where: **Goulburn Library**

When: Monday 18th September 2006 at 12 noon.

Bookings: No bookings required.

**Cost: Free**

**Bookmania** is a new initiative aimed at students in years 3 to 6. It is an after school book group that will meet on the 4th Tuesday of the month. Each month participants will get to choose new books to take home, pick up the star reads of the month and finish with a theme based activity.

It is free to join and after school snacks will be provided.

Where: **Goulburn Library**

When: Tuesday **26th September 2006** from 4pm

Bookings: No booking required.

**Cost: Free**





## 127 AUBURN STREET, GOULBURN (Next door to Video Ezy)

Local call dialup access Australia wide  
aDSL Broadband      Office Services  
High Speed internet access & Wifi Hotspot

Friendly, expert advice and support

Call 0500 522 400

<http://www.goulburn.net.au>      [info@goulburn.net.au](mailto:info@goulburn.net.au)



20 YRS EST.

NERRIGA TRADING POST

OPEN 8.30AM ~ 5.30PM THURS ~ MON

PHONE # 02 48459166

FAX # 02 48459001

TAKEAWAY OR DINE IN

BYO ALCOHOL

ICE , DIESEL & ULP AVAILABLE



# Windellama Public School News

**email:** [windellama-p.school@det.nsw.edu.au](mailto:windellama-p.school@det.nsw.edu.au)

**Website:** [www.windellama-p.schools.nsw.edu.au](http://www.windellama-p.schools.nsw.edu.au)

**Phone:** 4844 5130

**Fax:** 4844 5265



## HAPPENINGS AT SCHOOL SO FAR THIS TERM

The students at Windellama Public School have had some great things happening at school this term.



### CLIMBING WALL

There was a mobile climbing wall that came to our school. Everyone was amazed at how high the wall looked. The students were very nervous but also excited. Everyone tried their best with quite a few children being able to make it to the top of the wall.



### WIND & WEATHER

The school also had a visit by Patrick and Gerard from Questacon for a workshop. This is part of a Federal Government funded project that the school is a part of with five other small schools. The students are learning about alternate power sources and recycling. The school has a small wind turbine that the children were experimenting with to see if they could pump water. They were very successful as we had winds blowing up to 20km per hour!

### KITE MAGIC

This week the students have had a great day learning about and making kites. There are so many different kinds of kites. The children made a kite each and flew some of the kites that Michael from Kite Magic brought with him. This was exhausting as everyone had to run to make the kites fly – there was no wind this time!



### JEANS FOR GENES

The Student Parliament organised a "dress-up" for Jeans for Genes Day. It was fun not wearing school uniform.

### DELICIOUS RECESS

Healthy eating is a priority at Windellama. The students have a special recess once a week. This week the children had magnificent muffins made by a parent and milk with very tasty flavoured straws. The students will be having the milk each week from now on.

*Everyone hopes the rest of the term will be as interesting and as much fun as the first few weeks.*

### KINDERGARTEN 2007 ORIENTATION

Orientation will begin next term for children who will turn 5 before 31<sup>st</sup> July 2007.

The dates for Term 3 will be Friday 1<sup>st</sup> September and 15<sup>th</sup> September.

Please contact the school if you would like your child to participate in the Orientation Program.

### UPCOMING EVENTS

- Taralga Sports Day  
8<sup>th</sup> September
- The Afternoon Show  
13<sup>th</sup> September

# PLUMBING

LICENCE No 13038

## WAYNE OLIVE

TARAGO



PHONE  
**4849 4667**

ALL TYPES OF PLUMBING  
NO JOB TOO SMALL  
24 HOURS - 7 DAYS

Now supplying Water Tanks and  
Pumps  
Pensioner Discount

## Highland Stockfeeds

Now located at  
**223 Brisbane Grove Road**

- Variety of small bales of hay
- Stockfeeds
- Mineral Blocks
- Dog & Cat Food

**0428 223 677**



## Countrywide Shower Screens

Mick Greenwood  
**0427 494 220**

Fax: 02 4849 4220

Email: [mickgreenwood@iprimus.com.au](mailto:mickgreenwood@iprimus.com.au)  
ABN 11 822 772 856

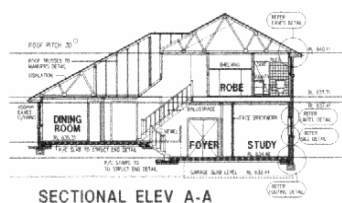
Shower Screens (framed & frameless)  
Mirror Robes ~ Mirrors  
Toughened Glass Specialist

**Free Measure and Quote**

## ACOM DESIGN

PO Box 806,  
Goulburn 2580

Yarralla,  
Oallen Ford Rd  
Bungonia 2580



**Robert C Everingham**

*Building Designer & Draftsman*

New Homes, Alterations & Additions  
Duplex, Villa, Townhouse Developments  
Rural, Commercial, Industrial Buildings  
Free Quotes - Competitive Rates - Prompt Service  
Energy Efficient (SEDA), Eng Dwgs: Mech, Struct, HVAC

**TEL 4844 4321**

**MOBILE 0417 682 022**

**FAX 4844 4323**

**EMAIL [acomdesign@bigpond.com.au](mailto:acomdesign@bigpond.com.au)**



MEMBER  
STANDARDS AUSTRALIA



MEMBER  
BUILDING  
DESIGNERS  
ASSOCIATION  
OF NEW SOUTH WALES INCORP